

SENSEX	NIFTY	INDIAVIX	BANKNIFTY	10YR G-SEC	USDINR
35634.95	10451.45	30.8	26462.6	6.05	74.11
-5.17%	-4.90%	20.11%	-4.82%	-2.22%	-0.43%

Nifty Short Term View

Nifty Close	R1	R2	S1	S2
10451.45	10675	10791	10276	9970

Indian shares ended deep in the red on Monday amid a global market rout as investors fretted about a rapidly-spreading coronavirus and a free fall in oil prices sparked by top exporter Saudi Arabia slashing price. Nifty index dropped 538 points, to 10,451.45.

Another day where nifty opened gap down and formed long body red candle on a daily chart which indicates negative sentiments is continuing in the market which may result in further weakness if nifty unable to sustain above 10276 level.



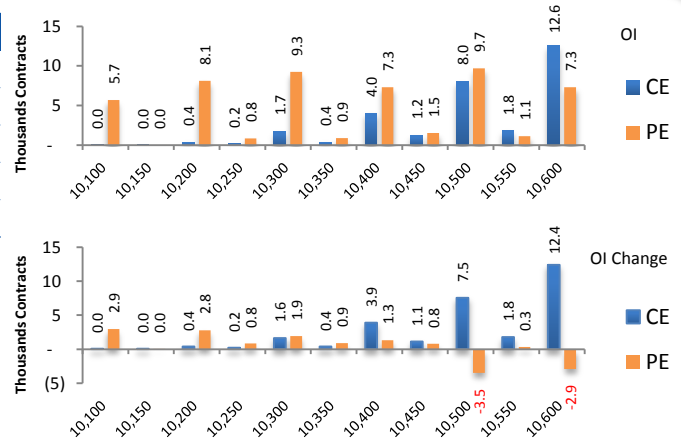
News Buzz

- Wall Street rose 1% on Tuesday as investors pinned their hopes on policy easing by major central banks and Trump's administration discussing a 90-day payroll tax suspension after global markets plummeted in the previous session on fears of a coronavirus-driven recession.
- Energy titan Saudi Aramco said March 10 it will boost its supply of crude oil to 12.3 million barrels per day in April, flooding markets as it escalates a price war with Russia. The world's biggest crude exporter has been pumping some 9.8 million bpd which means it will be adding at least 2.5 million bpd from April.
- With Karnataka and Kerala today reporting fresh positive cases of coronavirus, the total number of cases increased today to 53, from 44 on Monday. Kerala today confirmed six more cases of coronavirus, taking the total number of infected in the state to 12. The coronavirus outbreak could cost the global economy up to \$2 trillion this year, the UN's trade and development agency said, warning that shock from the epidemic will cause a recession in some countries and depress global annual growth to below 2.5 per cent. **Negative for Market**
- Driven by respiratory drugs, the India Pharmaceutical Market (IPM) posted a double-digit growth of 12.1 percent for the month of February after underwhelming in December and January (8.8 percent and 7.7 percent), according to data by market research firm AIOCD-AWACS. **Positive for Pharma stock**
- In a positive for Biocon, US drug regulator USFDA has accepted a biologics licence application by biopharmaceutical major and partner Mylan for a proposed biosimilar to treat advanced colon or rectal cancer. **Positive for Biocon**
- Shriram Transport Finance Company (STFC) on March 10 said a penalty of Rs 5 crore has been imposed on the company through an Enforcement Directorate order in relation to an old case of issuing warrants. **Negative for STFC**
- Asian Paints Promoter released pledge on 1.5 percent equity from March 3-9. **Positive for Asian Paints**
- NCLAT upholds CCI order on Adani Gas for abuse of dominant position, reduced quantum of penalty for company - PTI. **Positive for Adani Gas**

Derivative Activity

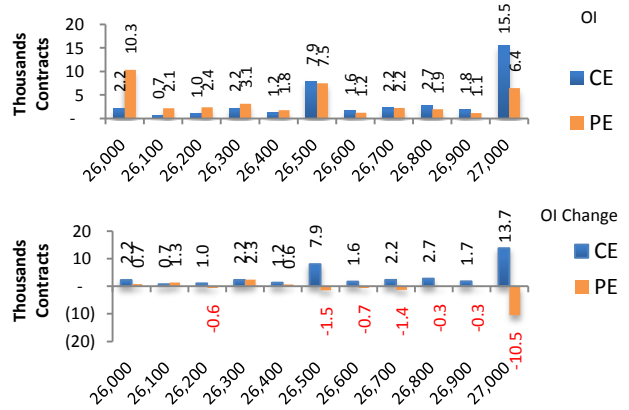
Index	NIFTY	Change
Fut Closing	10462.35	-4.4%
Prem /Disc	10.90	60.45
OI Qty	1.98 Cr.	13.9%
Nifty PCR	0.86	
Highest OI	11000 CE	11000 PE

- NIFTY future was Down 4.37% with increase in OI by 13.86%.
- Nifty Put OI addition was seen at 10100 followed by 10200 which can act as short term support
- Nifty Call OI addition was seen at 10600 followed by 10500. which can act as short term resistance



Index	BANKNIFTY	Change
Fut Closing	26525.75	-4.5%
Prem/Disc	63.15	81.65
OI Qty	0.15 Cr.	6.4%
Highest OI	28000 CE	25000 PE

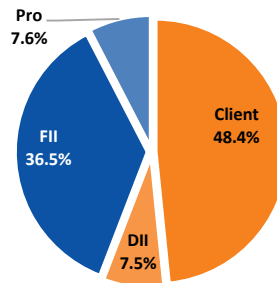
- Nifty Bank future was Down 4.53% with increase in OI by 6.41%.
- Nifty Bank Put OI Reduction was seen at 27000 followed by 26500.
- Nifty Bank Call OI addition was seen at 27000 followed by 26500 which can act as short term resistance.



Participant wise OI Activity (Fig in '000 Contracts)

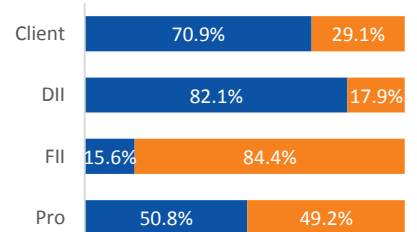
Participant Type	Index Fut Activity	Call Activity	Put Activity
Retail	-7.4	67.0	-6.9
DII	3.5	0.00	-2.8
FII	3.4	16.79	12.5
Pro	0.5	-83.82	-2.9

Index Fut OI %



Index Future OI %

■ Future Index Long % ■ Future Index Short %



- FII added long Index future by 3.4k contracts and Client added short Index future by 7.4k contracts
- FII added Long Calls by 16.8k contracts and added long Puts by 12.5 k contracts
- Client added Long Calls by 67k contracts and unwounded the longs Puts by 6.9 k contracts

Open Interest Gainers

Symbol	Trend	Future Price	Price Chng %	Fut OI Chng %
IDEA	Bearish	4.05	20.9%	21.3%
PETRONET	Bearish	223	-5.5%	21.2%
MFSL	Bearish	500	-4.2%	20.3%
PIDILITIND	Bullish	1641.6	-0.7%	17.8%
RBLBANK	Bearish	207.55	-18.5%	15.7%

Volume Gainers

Symbol	Trend	Future Price	Price Chng %	3 Day Vol Chng %
BPCL	Bearish	419.6	5.1%	102.2%
HINDPETRO	Bearish	211.05	5.6%	99.8%
IOC	Bearish	98	-0.6%	79.5%
IDEA	Bearish	4.05	20.9%	67.2%
RELIANCE	Bearish	1117.3	-11.9%	67.2%

Stocks Near Highest Call Open Interest

Symbol	Trend	Future Price	Highest Call OI	No of Contracts
IDEA	Bearish	4.05	4	386

Open interest Losers

Symbol	Trend	Future Price	Price Chng %	Fut OI Chng %
YESBANK	Bearish	18.95	96.4%	-20.1%
HINDPETRO	Bearish	211.05	5.6%	-15.9%
POWERGRID	Bullish	175.8	-3.2%	-14.4%
COALINDIA	Bearish	158.4	-5.0%	-14.1%
INDIGO	Bearish	1208	2.7%	-12.5%

Highest Position Carry forward %

Symbol	Trend	Future Price	Price Chng %	O I Chng / Volume
PETRONET	Bearish	223	-5.5%	50.8%
ICICIPRULI	Bearish	393.65	-5.3%	25.1%
IDEA	Bearish	4.05	20.9%	21.5%
TCS	Bearish	1956.3	-5.8%	20.3%
MARICO	Bearish	265.9	-6.1%	20.2%

Stocks Near Highest Put Open Interest

Symbol	Trend	Future Price	Highest Put OI	No of Contracts
TORNTPHARM	Bullish	2091.85	2100	6

Nifty 50 Daily Levels

Symbol	Prev Close	Trend	5 Day SMA	10 Day SMA	20 Day SMA	R3	R2	R1	S1	S2	S3
NIFTY50	10,451.45	Bearish	11189.1	11408.6	11752.9	10587.0	10519.1	10473.4	10429.5	10383.8	10315.9
NIFTYBANK	26,462.60	Bearish	28663.2	29384.5	30199.4	26805.9	26634.0	26518.1	26407.1	26291.2	26119.3
NIFTYIT	14,854.90	Bearish	15710.0	15924.3	16263.5	15047.6	14951.1	14886.0	14823.8	14758.7	14662.2
ADANIPOINTS	321.90	Neutral	344.9	349.9	359.7	349.1	345.3	342.7	340.1	337.5	333.7
ASIANPAINT	1,867.15	Neutral	1837.4	1830.1	1851.2	1916.5	1896.9	1883.8	1871.1	1858.0	1838.4
AXISBANK	623.55	Bearish	677.8	700.6	722.1	673.0	665.3	660.1	655.2	650.0	642.3
BAJAJ-AUTO	2,577.50	Neutral	2726.9	2833.6	2973.1	2804.3	2769.6	2746.2	2723.9	2700.5	2665.8
BAJFINANCE	4,026.80	Bearish	4331.6	4532.3	4654.4	4354.0	4289.8	4246.6	4205.1	4161.9	4097.7
BAJAJFINSV	8,207.10	Bearish	8832.2	9099.9	9384.3	8843.3	8723.1	8642.0	8564.4	8483.3	8363.1
BPCL	423.80	Neutral	415.5	431.8	453.8	415.9	409.5	405.2	401.0	396.7	390.3
BHARTIARTL	496.25	Bearish	520.4	525.8	535.9	531.5	525.3	521.1	517.2	513.0	506.8
INFRADEL	211.00	Bearish	215.1	216.4	226.0	213.4	208.6	205.3	202.1	198.8	194.0
BRITANNIA	2,996.50	Neutral	3049.4	3035.5	3077.9	3141.9	3111.6	3091.2	3071.6	3051.2	3020.9
CIPLA	426.15	Bullish	430.0	425.1	433.9	446.2	440.3	436.3	432.5	428.5	422.6
COALINDIA	157.95	Neutral	174.3	173.8	175.5	174.6	171.7	169.7	167.8	165.8	162.9
DRREDDY	3,061.25	Neutral	3095.2	3080.9	3161.0	3258.2	3214.5	3185.0	3156.9	3127.4	3083.7
EICHERMOT	17,885.80	Neutral	17535.0	17397.0	18206.5	18295.1	18018.9	17832.6	17654.5	17468.2	17192.0
GAIL	100.35	Neutral	104.7	107.4	115.4	111.9	109.9	108.5	107.1	105.7	103.7
GRASIM	634.60	Neutral	680.7	695.2	723.8	683.9	674.4	668.1	662.0	655.7	646.2
HCLTECH	540.45	Neutral	564.1	568.9	589.7	581.5	573.8	568.7	563.7	558.6	550.9
HDFCBANK	1,107.30	Bearish	1159.3	1178.3	1204.5	1152.3	1143.6	1137.7	1132.1	1126.2	1117.5
HEROMOTOCO	1,957.25	Neutral	2035.8	2085.2	2214.7	2091.4	2064.8	2046.9	2029.7	2011.8	1985.2
HINDALCO	143.45	Neutral	155.1	162.3	177.0	155.9	153.0	151.0	149.2	147.2	144.3
HINDUNILVR	2,121.50	Neutral	2181.8	2202.4	2216.1	2241.3	2215.0	2197.4	2180.4	2162.8	2136.5
HDFC	2,027.90	Bearish	2176.3	2220.6	2306.0	2166.8	2138.1	2118.7	2100.2	2080.8	2052.1
ICICIBANK	457.75	Bearish	504.0	511.7	526.9	499.2	492.8	488.4	484.3	479.9	473.5
ITC	177.20	Neutral	189.3	194.5	201.8	186.7	184.2	182.5	181.0	179.3	176.8
IOC	99.40	Bearish	104.6	106.4	110.4	103.3	102.0	101.2	100.4	99.6	98.3
INDUSINDBK	903.10	Neutral	1068.6	1102.2	1160.5	1056.8	1035.7	1021.6	1008.0	993.9	972.8
INFY	704.45	Neutral	748.1	762.7	774.8	755.9	747.4	741.7	736.2	730.5	722.0
JSWSTEEL	229.05	Bearish	242.6	248.3	267.0	248.0	243.4	240.3	237.3	234.2	229.6
KOTAKBANK	1,579.40	Neutral	1623.1	1643.9	1664.7	1665.8	1648.4	1636.7	1625.4	1613.7	1596.3
LT	1,101.95	Neutral	1172.0	1197.1	1242.8	1184.6	1171.7	1163.1	1154.7	1146.1	1133.2
M&M	463.20	Neutral	469.9	482.5	506.6	485.6	478.3	473.4	468.6	463.7	456.4
MARUTI	6,201.10	Neutral	6373.5	6356.0	6631.1	6582.1	6513.9	6467.9	6424.0	6378.0	6309.8
NTPC	102.90	Neutral	106.8	107.8	110.6	107.7	106.4	105.6	104.7	103.9	102.6
NESTLEIND	16,031.35	Bullish	16403.3	16301.7	16344.9	16785.6	16607.2	16486.9	16371.7	16251.4	16073.0
ONGC	74.55	Neutral	91.3	93.3	98.7	92.8	90.6	89.2	87.8	86.4	84.2
POWERGRID	180.95	Neutral	191.8	188.5	188.0	196.2	193.4	191.5	189.7	187.8	185.0
RELIANCE	1,114.15	Bearish	1316.2	1354.9	1411.9	1317.9	1294.4	1278.6	1263.4	1247.6	1224.1
SBIN	253.45	Bearish	284.3	302.4	311.7	280.3	275.4	272.1	268.9	265.6	260.7
SUNPHARMA	393.35	Neutral	394.9	389.7	402.2	412.0	406.4	402.7	399.1	395.4	389.8
TCS	1,972.35	Neutral	2072.4	2086.3	2131.7	2176.6	2146.5	2126.2	2106.7	2086.4	2056.3
TATAMOTORS	105.70	Neutral	124.4	134.1	150.5	120.6	117.4	115.2	113.2	111.0	107.8
TATASTEEL	322.30	Bearish	371.2	390.4	416.6	367.7	359.6	354.1	348.9	343.4	335.3
TECHM	703.75	Neutral	752.9	777.2	802.8	760.5	750.4	743.6	737.2	730.4	720.3
TITAN	1,203.45	Neutral	1248.8	1257.1	1275.7	1273.3	1257.9	1247.6	1237.6	1227.3	1211.9
UPL	513.00	Neutral	515.4	535.0	556.9	528.0	520.8	515.9	511.3	506.4	499.2
ULTRACEMCO	4,097.35	Neutral	4197.6	4261.0	4356.3	4250.1	4208.9	4181.1	4154.6	4126.8	4085.6
VEDL	94.90	Neutral	115.6	121.9	131.9	117.3	114.2	112.1	110.0	107.9	104.8
WIPRO	214.40	Bearish	225.3	230.8	237.3	228.3	225.9	224.3	222.8	221.2	218.8
YESBANK	21.25	Bearish	29.0	32.3	34.5	19.7	17.9	16.7	15.6	14.4	12.6
ZEEL	194.45	Bearish	239.2	243.2	242.3	233.5	227.3	223.1	219.2	215.0	208.8

Research Team Tel: 022 – 71148579

E-mail: research@inventuregrowth.comWebsite: [Inventuregrowth.com](http://www.inventuregrowth.com)

This Report is published by Inventure Growth & Securities Limited (hereinafter referred to as “IGSL”) for private circulation. IGSL is a registered Research Analyst under SEBI (Research Analyst) Regulations, 2014 having Registration no. INH000006129. IGSL is also a registered Stock Broker with National Stock Exchange of India Limited, BSE Limited and Metropolitan Stock Exchange of India Limited (MSE) in cash, F&O & currency derivatives segments. It is also registered as a Depository Participant with CDSL and is also registered with AMFI as a Mutual Fund Distributor

IGSL have not been debarred / suspended by SEBI for Retail & Institutional business or any other regulatory authority for accessing / dealing in securities Market other than PRO business. IGSL, its associates or analyst or his relatives may or may not hold any financial interest in the subject company. IGSL or its associates or Analyst do not have any conflict or material conflict of interest at the time of publication of the research report with the subject company. IGSL or its Affiliates may or may not have been beneficial ownership of one percent or more of the securities mentioned in this report. However, one or more of IGSL or its Affiliates may, from time to time, have a long or short position in any of the securities mentioned herein and may buy or sell those securities or options thereon, either on their own account.

IGSL or its associates / analyst has not received any compensation / managed or co-managed public offering of securities of the company covered by Analyst during the past twelve months. IGSL or its associates have not received any compensation or other benefits from the company covered by Analyst or third party in connection with the research report. Analyst has not served as an officer, director or employee of Subject Company and IGSL / analyst has not been engaged in market making activity of the subject company.

Analyst Certification: I/We, **Virat Jagad** the research analyst is the author of this report, hereby certify that the views expressed in this research report accurately reflects my/our personal views about the subject securities, issuers, products, sectors or industries. It is also certified that no part of the compensation of the analyst(s) was, is, or will be directly or indirectly related to the inclusion of specific recommendations or views in this research. The analyst(s) principally responsible for the preparation of this research report and has taken reasonable care to achieve and maintain independence and objectivity in making any recommendations.

Research Team	Profile	Email ID
Mr. Prashant Barwaliya	Head- Research	Prashant.b@inventuregrowth.com
Mr. Virat Jagad	Technical Analyst	virat.jagad@inventuregrowth.com
Ms. Jeni Rita	Fundamental Analyst	Jeni.rita@inventuregrowth.com
Ms. Darshita Shah	Fundamental Analyst	Darshita.shah@inventuregrowth.com

Created by:**IGSL - Research**

Inventure Growth & Securities Ltd, 201, Viraj Tower, Near Landmark Building,

Western Express Highway, Andheri (East), Mumbai -400 093

Tele: 91-22-71148500 , Fax: 91-22-40751511.

E-mail: Research@inventuregrowth.com , website : <http://www.inventuregrowth.com>**DISCLAIMER**

Inventure Growth and Securities Limited (hereinafter referred to as “IGSL”) is a registered Member of National Stock Exchange of India Limited, Bombay Stock Exchange Limited and Metropolitan Stock Exchange Limited. It is also registered as a Depository Participant with CDSL. It also has registration with AMFI as a Mutual Fund Distributor. Inventure Growth and Securities Limited is a registered entity with SEBI for Research Analyst in terms of SEBI (Research Analyst) Regulations, 2014 vide registration number INH000006129. IGSL has not been debarred/ suspended by SEBI or any other regulatory authority for accessing /dealing in securities Market. IGSL or its associates/ analyst has not received any compensation / managed or co-managed public offering of securities of the company covered by Analyst during the past twelve months.

This document is solely for the personal information of the recipient, and must not be singularly used as the basis of any investment decision. Nothing in this document should be construed as investment or financial advice. Each recipient of this document should make such investigations as they deem necessary to arrive at an independent evaluation of an investment in the securities of the companies referred to in this document (including the merits and risks involved), and should consult their own advisors to determine the merits and risks of such an investment. Reports based on technical and derivative analysis center on studying charts of a stock's price movement, outstanding positions and trading volume, as opposed to focusing on a company's fundamentals and, as such, may not match with a report on a company's fundamentals. Investors are advised to refer the Fundamental and Technical Research Reports available on our website to evaluate the contrary view, if any.

The information in this document has been printed on the basis of publicly available information, internal data and other reliable sources believed to be true, but we do not represent that it is accurate or complete and it should not be relied on as such, as this document is for general guidance only. Inventure Growth and Securities Limited or any of its affiliates/ group companies shall not be in any way responsible for any loss or damage that may arise to any person from any inadvertent error in the information contained in this report. Inventure Growth and Securities Limited has not independently verified all the information contained within this document. Accordingly, we cannot testify, nor make any representation or warranty, express or implied, to the accuracy, contents or data contained within this document. While Inventure Growth and Securities Limited endeavors to update on a reasonable basis the information discussed in this material, there may be regulatory, compliance, or other reasons that prevent us from doing so. This document is being supplied to you solely for your information, and its contents, information or data may not be reproduced, redistributed or passed on, directly or indirectly.

Neither Inventure Growth and Securities Limited , nor its directors, employees or affiliates shall be liable for any loss or damage that may arise from or in connection with the use of this information.