

SENSEX	NIFTY	INDIAVIX	BANKNIFTY	10YR G-SEC	USDINR
40363.23	11829.4	17	30455.1	6.32	71.96
-1.96%	-2.08%	24.07%	-1.58%	-1.56%	-0.43%

Nifty Short Term View

Nifty Close	R1	R2	S1	S2
11829.4	12054	12129	11721	11673

Indian shares tumbled on Monday, mirroring weak cues from other global markets as investors fretted about the spread of the deadly coronavirus outside China. The rapid spread of the deadly virus in several countries outside China left investors concerned about a hit to demand. Nifty index ended the session down 242.25 points, at 11,838.60.

Nifty formed bearish marubozu on a daily chart where nifty breach all its support line as well as on RSI it took a breakdown of 45 level which worked as a strong support. We can see further downside in the index if nifty drop below 11721 level.

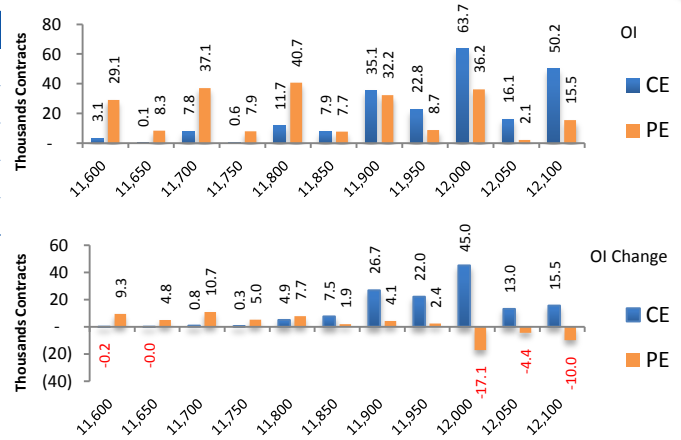


News Buzz

- The Dow Jones Industrials shed ~900 points on Monday as investors scurried to safer assets after a sharp rise in coronavirus cases outside China fueled fears of a bigger impact to global growth. Gold rose to a seven-year high and the inversion between the 3-month and 10-year US Treasury yields deepened as a rise in cases in Iran, Italy and South Korea over the weekend fanned fears of a pandemic. **Negative for markets**
- India's top packaged consumer goods company, Hindustan Unilever Ltd (HUL), on Monday announced plans to set up a new subsidiary in India that will be engaged in manufacturing activities and leverage growth opportunities in the country. The new manufacturing entity will help the company avail benefits of a recent tax provision that puts a lowered tax burden of 15% on entities engaged in manufacturing. **Positive for Hindustan Unilever**
- TVS Motor has said that the outbreak of pandemic Coronavirus (COVID-19) in China will lead to 10 per cent drop in the planned production in February. **Negative for TVS Motor**
- Aditya Birla Capital on Monday said it has received a foreign investment of Rs. 1,000 crore from Jomei Investments Ltd in lieu of preferential allotment of shares. **Positive for Aditya Birla Capital**
- Tata group firm Indian Hotels Company Ltd (IHCL), which operates Taj luxury hotels, will focus on scaling up its food and beverage brands with plans to take few of its existing ones into the overseas while bringing in new brands into the country, a top company official said. **Positive for Indian Hotels Company Ltd**
- Rating agency CRISIL downgraded ratings for PNB Housing Finance Ltd's (PNB Housing) fixed deposits from "AAA" to "AA+" over weakening of asset quality after many big-ticket developers defaulted on payments. **Negative for PNB Housing Finance**
- GAIL India Ltd, the country's largest gas utility, will invest Rs 1.05 trillion over the next five years to expand pipelines, lay city gas distribution network and raise petrochemical production capacity, its new chairman and managing director Manoj Jain said. **Positive for GAIL**

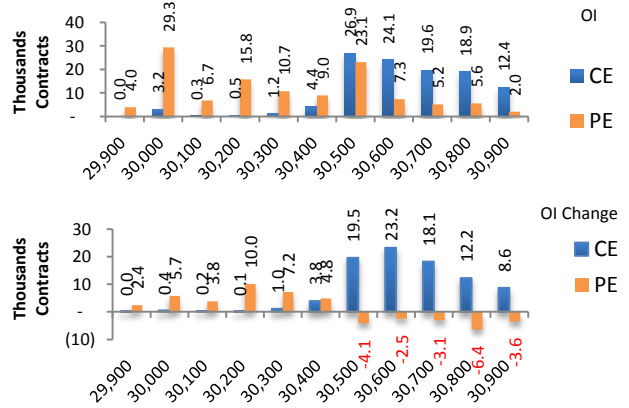
Index	NIFTY	Change
Fut Closing	11827.55	-2.1%
Prem /Disc	-1.85	0.00
OI Qty	1.66 Cr.	16.4%
Nifty PCR	0.91	
Highest OI	12000 CE	11800 PE

- NIFTY future was Down 2.08% with increase in OI by 16.41%
- Nifty Put OI addition was seen at 11700 followed by 11600 which can act as short term support
- Nifty Call OI addition was seen at 12000 followed by 11900. which can act as short term resistance



Index	BANKNIFTY	Change
Fut Closing	30423	-1.7%
Prem/Disc	-32.10	-27.95
OI Qty	0.14 Cr.	15.9%
Highest OI	31000 CE	30000 PE

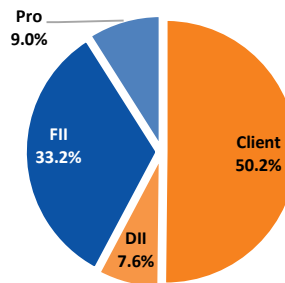
- Nifty Bank future was up 0.9% with decrease in OI by 0.87%.
- Nifty Bank Put OI addition was seen at 30700 followed by 30500 which can act as short term support.
- Nifty Bank Call OI addition was seen at 31200 followed by 31000 which can act as short term resistance.



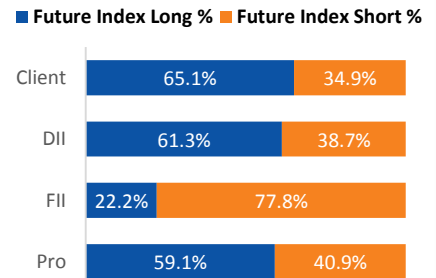
Participant wise OI Activity (Fig in '000 Contracts)

Participant Type	Index Fut Activity	Call Activity	Put Activity
Retail	-4.3	107.8	-38.6
DII	5.6	0.0	1.2
FII	-11.9	-3.4	19.6
Pro	10.6	-104.4	17.8

Index Fut OI %



Index Future OI %



- FII added short Index future by 11.9k contracts and Client added short Index future by 4.3k contracts
- FII added Short calls by 3.4k contracts and added long puts by 19.6 k contracts
- Client added Long calls by 107.8k contracts and added short puts by 38.6 k contracts

Open Interest Gainers

Symbol	Trend	Future Price	Price Chng %	Fut OI Chng %
GMRINFRA	Bullish	25.6	8.0%	31.3%
CHOLAFIN	Bearish	323.35	-2.9%	24.6%
ADANIENT	Bullish	246.75	-4.7%	22.0%
JUBLFOOD	Bullish	1866.15	-1.0%	18.7%
IDEA	Bearish	3.9	-12.4%	17.9%

Volume Gainers

Symbol	Trend	Future Price	Price Chng %	3 Day Vol Chng %
GMRINFRA	Bullish	25.6	8.0%	149.6%
AMBUJACEM	Bearish	209.6	1.8%	135.7%
SUNPHARMA	Bearish	397.95	-1.9%	123.6%
MFSL	Bullish	590.45	4.3%	121.7%
GRASIM	Bearish	726	-3.6%	117.3%

Stocks Near Highest Call Open Interest

Symbol	Trend	Future Price	Highest Call OI	No of Contracts
ASHOKLEY	Bullish	84.7	85	782
INFY	Bullish	797.5	800	654
APOLLOHOSP	Bullish	1790.85	1800	234

Open interest Losers

Symbol	Trend	Future Price	Price Chng %	Fut OI Chng %
AMBUJACEM	Bearish	209.6	1.8%	-30.1%
INFRATEL	Bearish	216.15	-4.8%	-9.3%
INDUSINDBK	Bearish	1168.45	-1.2%	-6.4%
BAJFINANCE	Bullish	4809.4	-1.6%	-6.1%
MFSL	Bullish	590.45	4.3%	-5.5%

Highest Position Carry forward %

Symbol	Trend	Future Price	Price Chng %	O I Chng / Volume
HDFCBANK	Bearish	1207.65	-0.7%	27.5%
CHOLAFIN	Bearish	323.35	-2.9%	27.3%
HINDPETRO	Bearish	216.5	-3.0%	24.3%
CONCOR	Bearish	548.35	-0.6%	21.8%
ADANIENT	Bullish	246.75	-4.7%	21.5%

Stocks Near Highest Put Open Interest

Symbol	Trend	Future Price	Highest Put OI	No of Contracts
AMARAJABAT	Bearish	740.2	740	30
SHREECEM		23848.55	24000	18

Nifty 50 Daily Levels

Symbol	Prev Close	Trend	5 Day SMA	10 Day SMA	20 Day SMA	R3	R2	R1	S1	S2	S3
NIFTY50	11,829.40	Bearish	12071.7	12097.2	12042.5	11940.1	11884.6	11847.3	11811.5	11774.2	11718.7
NIFTYBANK	30,455.10	Bearish	30771.8	31014.3	30846.8	30740.0	30597.3	30501.1	30409.1	30312.9	30170.2
NIFTYIT	16,461.80	Neutral	16692.2	16602.7	16465.7	16615.8	16538.7	16486.7	16436.9	16384.9	16307.8
ADANIPOINTS	362.25	Neutral	367.7	369.4	370.9	377.1	374.0	371.9	369.8	367.7	364.6
ASIANPAINT	1,818.95	Bearish	1869.9	1872.3	1846.6	1879.1	1860.6	1848.2	1836.3	1823.9	1805.4
AXISBANK	725.45	Bullish	738.8	743.6	735.0	756.4	750.3	746.3	742.3	738.3	732.2
BAJAJ-AUTO	2,980.50	Bearish	3092.2	3112.7	3129.5	3121.5	3093.4	3074.5	3056.5	3037.6	3009.5
BAJFINANCE	4,803.95	Bullish	4815.0	4776.4	4582.0	4976.6	4928.4	4896.0	4864.9	4832.5	4784.3
BAJAJFINSV	9,466.60	Bullish	9643.4	9668.8	9581.6	9935.8	9822.6	9746.2	9673.2	9596.8	9483.6
BPCL	464.65	Neutral	471.2	475.8	474.6	484.5	478.1	473.8	469.7	465.4	459.0
BHARTIARTL	529.90	Neutral	553.4	545.9	527.4	560.1	552.8	547.9	543.3	538.4	531.1
INFRADEL	215.95	Bearish	226.4	235.6	239.1	238.5	232.3	228.2	224.2	220.1	213.9
BRITANNIA	3,036.20	Bearish	3077.8	3120.3	3162.6	3111.7	3085.5	3067.8	3051.0	3033.3	3007.1
CIPLA	430.15	Bearish	439.7	442.7	447.0	442.8	439.3	436.9	434.6	432.2	428.7
COALINDIA	174.85	Neutral	174.3	177.3	180.5	184.6	182.0	180.2	178.5	176.7	174.1
DRREDDY	3,176.30	Neutral	3276.9	3241.2	3200.4	3328.6	3291.9	3267.1	3243.5	3218.7	3182.0
EICHERMOT	17,955.90	Neutral	18744.7	19016.0	19624.9	19352.9	19100.3	18930.1	18767.2	18597.0	18344.4
GAIL	116.80	Bearish	119.8	123.4	122.6	122.9	121.1	119.9	118.7	117.5	115.7
GRASIM	724.90	Neutral	742.6	752.5	772.7	769.2	760.2	754.2	748.4	742.4	733.4
HCLTECH	595.15	Neutral	611.2	610.6	603.6	617.3	612.7	609.5	606.6	603.4	598.8
HDFCBANK	1,209.95	Bearish	1218.8	1230.8	1226.9	1234.3	1225.7	1219.9	1214.3	1208.5	1199.9
HEROMOTOCO	2,184.20	Bearish	2276.9	2344.2	2395.3	2291.0	2265.6	2248.4	2232.1	2214.9	2189.5
HINDALCO	179.05	Neutral	189.3	191.7	191.9	195.2	192.6	190.8	189.1	187.3	184.7
HINDUNILVR	2,215.15	Bullish	2256.5	2229.8	2165.6	2293.5	2270.8	2255.6	2240.9	2225.7	2203.0
HDFC	2,292.30	Neutral	2363.5	2391.4	2383.8	2426.2	2397.8	2378.7	2360.3	2341.2	2312.8
ICICIBANK	529.85	Bullish	544.1	542.1	535.1	557.5	552.2	548.7	545.3	541.8	536.5
ITC	203.00	Neutral	206.1	209.2	216.8	212.8	210.1	208.3	206.6	204.8	202.1
IOC	110.55	Neutral	113.2	114.5	114.6	115.3	113.8	112.8	111.8	110.8	109.3
INDUSINDBK	1,170.25	Neutral	1162.8	1218.9	1240.9	1219.1	1200.6	1188.2	1176.2	1163.8	1145.3
INFY	795.85	Bullish	794.2	786.8	783.1	807.1	802.1	798.6	795.4	791.9	786.9
JSWSTEEL	258.95	Neutral	285.0	285.8	272.3	290.9	286.4	283.3	280.3	277.2	272.7
KOTAKBANK	1,678.25	Neutral	1690.0	1685.5	1672.3	1722.2	1704.0	1691.8	1680.1	1667.9	1649.7
LT	1,259.70	Bearish	1284.7	1288.4	1308.9	1305.2	1292.9	1284.6	1276.6	1268.3	1256.0
M&M	513.20	Neutral	524.0	530.6	550.8	538.8	531.8	527.1	522.6	517.9	510.9
MARUTI	6,470.40	Neutral	6823.2	6906.3	6961.9	6888.5	6823.0	6778.8	6736.4	6692.2	6626.7
NTPC	109.75	Neutral	111.2	113.4	112.7	113.8	112.6	111.8	110.9	110.1	108.9
NESTLEIND	16,337.25	Bullish	16534.7	16388.0	16133.1	16881.1	16710.0	16594.7	16484.3	16369.0	16197.9
ONGC	98.05	Neutral	101.4	104.1	107.3	105.7	104.2	103.3	102.3	101.4	99.9
POWERGRID	186.10	Neutral	185.9	187.6	189.0	194.0	191.6	190.0	188.5	186.9	184.5
RELIANCE	1,444.95	Bullish	1484.6	1468.9	1455.2	1516.2	1501.1	1490.8	1481.1	1470.8	1455.7
SBIN	322.95	Bullish	319.8	321.0	316.4	335.6	331.6	328.9	326.4	323.7	319.7
SUNPHARMA	398.05	Bearish	408.8	414.7	424.9	411.0	408.0	405.9	404.0	401.9	398.9
TCS	2,115.35	Neutral	2191.3	2177.1	2157.3	2197.1	2176.9	2163.3	2150.3	2136.7	2116.5
TATAMOTORS	150.65	Bearish	163.3	166.9	171.8	165.2	161.9	159.6	157.4	155.1	151.8
TATASTEEL	415.45	Neutral	435.9	442.8	447.0	458.2	450.9	445.9	441.2	436.2	428.9
TECHM	820.10	Neutral	835.3	828.4	815.3	840.9	835.2	831.4	827.8	824.0	818.3
TITAN	1,279.90	Bullish	1314.6	1294.3	1254.0	1354.2	1338.5	1327.9	1317.8	1307.2	1291.5
UPL	573.25	Neutral	588.3	578.8	554.4	599.3	591.8	586.8	581.9	576.9	569.4
ULTRACEMCO	4,395.00	Bearish	4452.2	4451.7	4466.0	4500.2	4464.1	4439.8	4416.4	4392.1	4356.0
VEDL	133.20	Neutral	141.8	141.8	141.3	146.2	144.3	143.0	141.7	140.4	138.5
WIPRO	244.20	Bullish	244.8	243.8	242.6	249.2	247.5	246.3	245.1	243.9	242.2
YESBANK	34.95	Neutral	36.4	36.7	37.8	37.0	36.2	35.7	35.2	34.7	33.9
ZEEL	249.10	Bullish	246.5	241.3	249.6	269.1	263.0	258.8	254.8	250.6	244.5

Research Team Tel: 022 – 71148579

E-mail: research@inventuregrowth.comWebsite: [Inventuregrowth.com](http://www.inventuregrowth.com)

This Report is published by Inventure Growth & Securities Limited (hereinafter referred to as “IGSL”) for private circulation. IGSL is a registered Research Analyst under SEBI (Research Analyst) Regulations, 2014 having Registration no. INH000006129. IGSL is also a registered Stock Broker with National Stock Exchange of India Limited, BSE Limited and Metropolitan Stock Exchange of India Limited (MSE) in cash, F&O & currency derivatives segments. It is also registered as a Depository Participant with CDSL and is also registered with AMFI as a Mutual Fund Distributor

IGSL have not been debarred / suspended by SEBI for Retail & Institutional business or any other regulatory authority for accessing / dealing in securities Market other than PRO business. IGSL, its associates or analyst or his relatives may or may not hold any financial interest in the subject company. IGSL or its associates or Analyst do not have any conflict or material conflict of interest at the time of publication of the research report with the subject company. IGSL or its Affiliates may or may not have been beneficial ownership of one percent or more of the securities mentioned in this report. However, one or more of IGSL or its Affiliates may, from time to time, have a long or short position in any of the securities mentioned herein and may buy or sell those securities or options thereon, either on their own account.

IGSL or its associates / analyst has not received any compensation / managed or co-managed public offering of securities of the company covered by Analyst during the past twelve months. IGSL or its associates have not received any compensation or other benefits from the company covered by Analyst or third party in connection with the research report. Analyst has not served as an officer, director or employee of Subject Company and IGSL / analyst has not been engaged in market making activity of the subject company.

Analyst Certification: I/We, **Virat Jagad** the research analyst is the author of this report, hereby certify that the views expressed in this research report accurately reflects my/our personal views about the subject securities, issuers, products, sectors or industries. It is also certified that no part of the compensation of the analyst(s) was, is, or will be directly or indirectly related to the inclusion of specific recommendations or views in this research. The analyst(s) principally responsible for the preparation of this research report and has taken reasonable care to achieve and maintain independence and objectivity in making any recommendations.

Research Team	Profile	Email ID
Mr. Prashant Barwaliya	Head- Research	Prashant.b@inventuregrowth.com
Mr. Virat Jagad	Technical Analyst	virat.jagad@inventuregrowth.com
Ms. Jeni Rita	Fundamental Analyst	Jeni.rita@inventuregrowth.com
Ms. Darshita Shah	Fundamental Analyst	Darshita.shah@inventuregrowth.com

Created by:**IGSL - Research**

Inventure Growth & Securities Ltd, 201, Viraj Tower, Near Landmark Building,

Western Express Highway, Andheri (East), Mumbai -400 093

Tele: 91-22-71148500 , Fax: 91-22-40751511.

E-mail: Research@inventuregrowth.com , website : <http://www.inventuregrowth.com>**DISCLAIMER**

Inventure Growth and Securities Limited (hereinafter referred to as “IGSL”) is a registered Member of National Stock Exchange of India Limited, Bombay Stock Exchange Limited and Metropolitan Stock Exchange Limited. It is also registered as a Depository Participant with CDSL. It also has registration with AMFI as a Mutual Fund Distributor. Inventure Growth and Securities Limited is a registered entity with SEBI for Research Analyst in terms of SEBI (Research Analyst) Regulations, 2014 vide registration number INH000006129. IGSL has not been debarred/ suspended by SEBI or any other regulatory authority for accessing /dealing in securities Market. IGSL or its associates/ analyst has not received any compensation / managed or co-managed public offering of securities of the company covered by Analyst during the past twelve months.

This document is solely for the personal information of the recipient, and must not be singularly used as the basis of any investment decision. Nothing in this document should be construed as investment or financial advice. Each recipient of this document should make such investigations as they deem necessary to arrive at an independent evaluation of an investment in the securities of the companies referred to in this document (including the merits and risks involved), and should consult their own advisors to determine the merits and risks of such an investment. Reports based on technical and derivative analysis center on studying charts of a stock's price movement, outstanding positions and trading volume, as opposed to focusing on a company's fundamentals and, as such, may not match with a report on a company's fundamentals. Investors are advised to refer the Fundamental and Technical Research Reports available on our website to evaluate the contrary view, if any.

The information in this document has been printed on the basis of publicly available information, internal data and other reliable sources believed to be true, but we do not represent that it is accurate or complete and it should not be relied on as such, as this document is for general guidance only. Inventure Growth and Securities Limited or any of its affiliates/ group companies shall not be in any way responsible for any loss or damage that may arise to any person from any inadvertent error in the information contained in this report. Inventure Growth and Securities Limited has not independently verified all the information contained within this document. Accordingly, we cannot testify, nor make any representation or warranty, express or implied, to the accuracy, contents or data contained within this document. While Inventure Growth and Securities Limited endeavors to update on a reasonable basis the information discussed in this material, there may be regulatory, compliance, or other reasons that prevent us from doing so. This document is being supplied to you solely for your information, and its contents, information or data may not be reproduced, redistributed or passed on, directly or indirectly.

Neither Inventure Growth and Securities Limited , nor its directors, employees or affiliates shall be liable for any loss or damage that may arise from or in connection with the use of this information.