

SENSEX	NIFTY	INDIAVIX	BANKNIFTY	10YR G-SEC	USDINR
41257.74	12113.45	13.62	30834.8	6.38	71.38
-0.49%	-0.50%	1.83%	-1.27%	-0.65%	-0.07%

Nifty Short Term View

Nifty Close	R1	R2	S1	S2
12113.45	12194	12257	12076	12030

Indian shares gave up early gains to end notably lower on Friday after the Supreme Court rejected the modification pleas filed by the telecom companies seeking new schedule of AGR payment and ordered them to clear their dues that they owe to the government by March 17. Nifty index ended down 61.20 points, at 12,113.45.

Nifty formed long body red candle on a daily chart where its RSI feel resistance near 55 level. We can see range bound market in near future weakness can be seen only if nifty sustain below 12076 level.



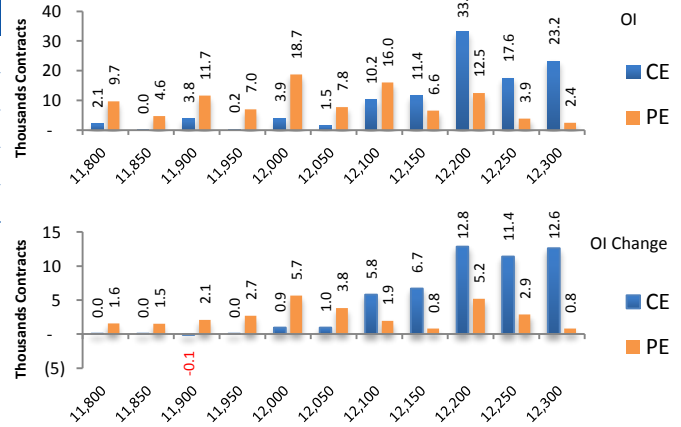
News Buzz

- The sluggish Indian economy and industries that are heavily dependent on crude oil such as aviation, shipping, road and rail transportation are likely to gain from a sudden drop in crude oil prices due to the coronavirus epidemic in China, the world's biggest oil importer.
- Telecom operators Bharti Airtel, Vodafone Idea and Tata Teleservices are likely to make payment for adjusted gross revenue (AGR) dues on Monday to avoid stringent punitive action from the Telecom Department, according to an official source.
- Cadila Healthcare (Zyus Cadila) has announced an accelerated research programme for developing a vaccine for the novel coronavirus, (COVID-19) with multiple teams in India and Europe. **Positive for Cadila Healthcare**
- The country's largest two-wheeler maker Hero MotoCorp on Friday said Coronavirus (Covid-19) outbreak in China has affected the supply of some components which could hit the production by around 10 per cent in February. The company, however, said wholesale dispatches of vehicles to its dealers during the month remain unaffected. **Negative for Hero MotoCorp**
- Glenmark Pharmaceuticals on Friday reported a 64.02 per cent jump in its consolidated net profit to Rs 190.83 crore for Q3FY2020, mainly on account of robust sales in the Indian market. Its board also approved raising of funds up to USD 400 million (over Rs 2,855 crore) through issuance of securities. Consolidated revenue of the company stood at Rs 2,735.56 crore for the quarter up 7% on YoY basis. **Positive for Glenmark Pharmaceuticals**
- The Calcutta High Court has asked the Reserve Bank of India (RBI) to consider "appropriate steps" against Bank of Baroda, including cancelling its banking license, for delaying to honour a bank guarantee to IOCL. **Negative for Bank of Baroda**
- Tata Steel Ltd is expecting its capex during the current fiscal to touch the Rs 9,000-crore mark, company sources said. The steel major, however, will take a cautious approach at the capital allocation for the next financial year, they said. **Positive for Tata Steel Ltd**
- The country's largest steelmaker Steel Authority of India on Friday reported Rs 343.57 crore consolidated net loss for the third quarter ended December 31, mainly on account of increased expenses. During October-December 2019, the company's total income was Rs 16,714.87 crore as against Rs 15,906.68 crore in the year-ago quarter. **Negative for SAIL**

Derivative Activity

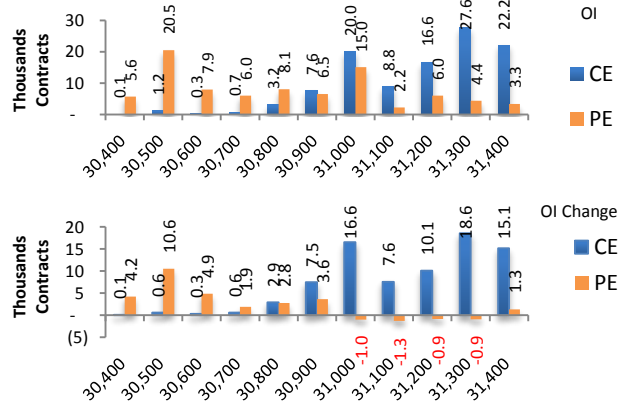
Index	NIFTY	Change
Fut Closing	12129.65	-0.4%
Prem /Disc	16.20	16.25
OI Qty	1.42 Cr.	-2.1%
Nifty PCR	1.06	
Highest OI	12500 CE	12000 PE

- NIFTY future was Down 0.37% with decrease in O I by 2.05%
- Nifty Put O I addition was seen at 12000 followed by 12200 which can act as short term support
- Nifty Call O I addition was seen at 12200 followed by 12300. which can act as short term resistance



Index	BANKNIFTY	Change
Fut Closing	30902.1	-1.1%
Prem/Disc	67.30	66.20
OI Qty	0.13 Cr.	4.9%
Highest OI	31500 CE	30500 PE

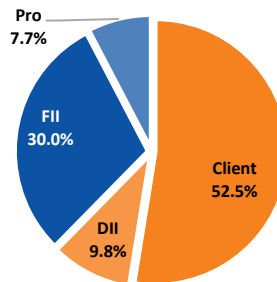
- Nifty Bank future was Down 1.05% with increase in O I by 4.87%.
- Nifty Bank Put O I addition was seen at 30500 followed by 30600 which can act as short term support.
- Nifty Bank Call O I addition was seen at 31300 followed by 31000 which can act as short term resistance.



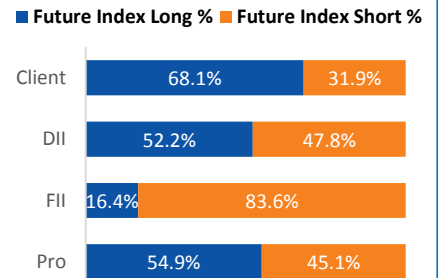
Participant wise OI Activity (Fig in '000 Contracts)

Participant Type	Index Fut Activity	Call Activity	Put Activity
Retail	-3.6	58.4	-29.6
DII	1.9	0.0	0.0
FII	2.0	-8.1	17.0
Pro	-0.3	-50.3	12.6

Index Fut OI %



Index Future OI %



- FII covered the short Index future by 2k contracts and Client added short Index future by 3.6k contracts
- FII added Short calls by 8.1k contracts and added long puts by 17 k contracts
- Client added Long calls by 58.4k contracts and added short puts by 29.6 k contracts

Open Interest Gainers

Symbol	Trend	Future Price	Price Chng %	Fut OI Chng %
INFRATEL	Bullish	232	-5.0%	31.2%
TORNTPOWER	Bearish	311.1	-1.4%	30.5%
IGL	Bullish	489.6	-1.6%	13.5%
BATAINDIA	Bullish	1790.45	-1.7%	11.8%
APOLLOTYRE	Bearish	159.55	-1.4%	9.9%

Volume Gainers

Symbol	Trend	Future Price	Price Chng %	3 Day Vol Chng %
IDEA	Bearish	3.45	-24.2%	147.4%
PAGEIND		22371.7	-4.4%	141.9%
BHARTIARTL	Bullish	566.65	4.8%	131.6%
INFRATEL	Bullish	232	-5.0%	127.0%
IDFCFIRSTB	Bearish	39.55	-3.4%	106.9%

Stocks Near Highest Call Open Interest

Symbol	Trend	Future Price	Highest Call OI	No of Contracts
RELIANCE	Bearish	1491.7	1500	4097
TITAN	Bullish	1295.25	1300	940
BAJFINANCE	Bullish	4791.4	4800	766

Open interest Losers

Symbol	Trend	Future Price	Price Chng %	Fut OI Chng %
MGL	Bullish	1164.75	-1.9%	-10.4%
POWERGRID	Bullish	183.8	-2.8%	-10.1%
ESCORTS	Bullish	885.65	-0.2%	-8.0%
PFC	Bullish	126.7	0.2%	-7.2%
COALINDIA	Bearish	175.05	-1.7%	-7.0%

Highest Position Carry forward %

Symbol	Trend	Future Price	Price Chng %	O I Chng / Volume
TORNTPOWER	Bearish	311.1	-1.4%	30.4%
COLPAL	Bearish	1341.45	-0.7%	26.4%
BATAINDIA	Bullish	1790.45	-1.7%	23.7%
TATAPOWER	Bearish	54	-2.5%	21.5%
ADANIPOINTS	Bearish	367.45	-0.9%	20.8%

Stocks Near Highest Put Open Interest

Symbol	Trend	Future Price	Highest Put OI	No of Contracts

Nifty 50 Daily Levels

Symbol	Prev Close	Trend	5 Day SMA	10 Day SMA	20 Day SMA	R3	R2	R1	S1	S2	S3
NIFTY50	12,113.45	Neutral	12122.7	12019.0	12071.1	12252.2	12198.0	12161.5	12126.6	12090.1	12035.9
NIFTYBANK	30,834.80	Sell	31256.8	30912.1	30902.7	31308.9	31170.5	31077.2	30987.9	30894.6	30756.2
NIFTYIT	16,642.75	Neutral	16513.1	16407.9	16375.9	16806.2	16731.9	16681.9	16633.9	16583.9	16509.6
ADANIPO RTS	366.85	Bearish	371.0	369.4	374.7	375.0	372.0	370.0	368.2	366.2	363.2
ASIANPAINT	1,877.05	Neutral	1874.8	1861.9	1829.3	1910.7	1892.4	1880.0	1868.1	1855.7	1837.4
AXISBANK	736.50	Neutral	748.5	733.3	731.2	760.0	753.9	749.8	745.8	741.7	735.6
BAJAJ-AUTO	3,146.40	Bullish	3133.3	3156.8	3127.3	3187.4	3161.9	3144.6	3128.2	3110.9	3085.4
BAJFINANCE	4,781.75	Bullish	4737.9	4603.9	4415.9	4884.2	4839.7	4809.7	4781.0	4751.0	4706.5
BAJAJFINSV	9,690.50	Bullish	9694.2	9525.1	9561.9	9935.0	9825.9	9752.4	9682.0	9608.5	9499.4
BPCL	476.40	Neutral	480.3	478.1	472.3	481.0	475.0	470.9	467.1	463.0	457.0
BHARTIARTL	565.00	Bullish	538.4	529.8	518.2	553.3	546.6	542.1	537.8	533.3	526.6
INFRA TEL	235.45	Neutral	244.9	243.2	242.0	256.0	250.4	246.7	243.0	239.3	233.7
BRITANNIA	3,096.65	Bearish	3162.7	3188.2	3174.8	3191.9	3163.5	3144.4	3126.0	3106.9	3078.5
CIPLA	447.10	Bearish	445.8	445.3	454.5	449.0	446.2	444.3	442.5	440.6	437.8
COALINDIA	174.75	Neutral	180.3	179.5	185.9	182.9	180.4	178.6	177.0	175.2	172.7
DRREDDY	3,304.30	Bullish	3205.5	3182.9	3143.8	3394.3	3359.4	3335.9	3313.3	3289.8	3254.9
EICHERMOT	18,703.55	Neutral	19287.2	19577.0	20207.1	19878.3	19616.4	19439.8	19270.8	19094.2	18832.3
GAIL	122.55	Bullish	126.9	123.0	124.6	134.2	132.2	130.9	129.7	128.4	126.4
GRASIM	743.05	Bearish	762.4	774.7	785.5	766.9	759.6	754.6	749.9	744.9	737.6
HCLTECH	621.65	Bullish	610.0	600.2	599.3	621.2	616.8	613.9	611.0	608.1	603.7
HDFCBANK	1,219.25	Neutral	1242.7	1231.9	1233.7	1259.2	1250.3	1244.3	1238.5	1232.5	1223.6
HEROMOTOCO	2,356.50	Bearish	2411.5	2412.7	2431.7	2461.3	2435.1	2417.4	2400.5	2382.8	2356.6
HINDALCO	194.00	Neutral	194.2	191.7	195.9	199.7	197.5	196.0	194.5	193.0	190.8
HINDUNILVR	2,255.05	Bullish	2203.1	2174.2	2116.5	2325.1	2304.2	2290.1	2276.7	2262.6	2241.7
HDFC	2,401.75	Neutral	2419.3	2379.8	2403.7	2456.7	2430.1	2412.2	2395.1	2377.2	2350.6
ICICIBANK	545.85	Bullish	540.1	533.2	531.6	551.7	546.3	542.7	539.3	535.7	530.3
ITC	207.70	Bearish	212.3	213.4	225.0	217.4	214.6	212.8	211.0	209.2	206.4
IOC	115.10	Neutral	115.8	114.2	115.5	117.8	116.3	115.2	114.3	113.2	111.7
INDUSINDBK	1,176.35	Neutral	1274.9	1272.8	1282.3	1271.2	1250.9	1237.3	1224.2	1210.6	1190.3
INFY	786.45	Neutral	779.5	778.8	777.9	805.9	799.1	794.5	790.0	785.4	778.6
JSWSTEEL	289.00	Bullish	286.6	273.3	268.2	301.8	297.5	294.7	292.0	289.2	284.9
KOTAKBANK	1,680.95	Bullish	1680.9	1679.1	1653.6	1726.5	1708.1	1695.7	1683.9	1671.5	1653.1
LT	1,295.15	Neutral	1292.2	1295.4	1317.6	1318.3	1305.2	1296.5	1288.0	1279.3	1266.2
M&M	523.00	Bearish	537.2	553.1	560.1	548.4	541.0	536.0	531.2	526.2	518.8
MARUTI	6,913.80	Neutral	6989.4	7003.3	7064.3	7133.9	7069.3	7025.9	6984.2	6940.8	6876.2
NTPC	112.70	Neutral	115.6	113.3	113.7	117.6	116.4	115.6	114.7	113.9	112.7
NESTLEIND	16,356.45	Bullish	16241.4	16215.8	15877.0	16728.5	16570.1	16463.3	16361.1	16254.3	16095.9
ONGC	103.30	Neutral	106.9	106.2	111.8	108.0	106.7	105.8	104.9	104.0	102.7
POWERGRID	184.10	Neutral	189.3	189.3	192.7	195.3	192.9	191.3	189.8	188.2	185.8
RELIANCE	1,486.65	Bullish	1453.3	1436.8	1466.5	1502.4	1488.2	1478.7	1469.6	1460.1	1445.9
SBIN	319.40	Bullish	322.2	315.1	315.9	335.4	331.4	328.7	326.2	323.5	319.5
SUNPHARMA	418.55	Bearish	420.6	422.6	434.7	424.9	421.9	419.9	418.0	416.0	413.0
TCS	2,183.80	Bullish	2162.9	2146.5	2155.6	2233.5	2212.7	2198.7	2185.2	2171.2	2150.4
TATAMOTORS	169.10	Bearish	170.5	171.0	178.3	176.7	173.1	170.7	168.3	165.9	162.3
TATASTEEL	434.55	Bearish	449.6	451.3	458.3	454.5	447.9	443.4	439.1	434.6	428.0
TECHM	834.15	Bullish	821.5	815.1	801.1	839.2	833.6	829.8	826.2	822.4	816.8
TITAN	1,292.25	Bullish	1274.0	1254.5	1224.0	1327.1	1312.6	1302.8	1293.4	1283.6	1269.1
UPL	591.65	Bullish	569.3	546.0	547.9	593.5	586.1	581.1	576.4	571.4	564.0
ULTRACEMCO	4,434.35	Neutral	4451.3	4430.3	4482.8	4526.9	4488.6	4462.8	4438.2	4412.4	4374.1
VEDL	141.10	Neutral	141.9	140.4	144.5	146.0	144.2	143.1	141.9	140.8	139.0
WIPRO	243.00	Bullish	242.9	241.5	243.3	247.2	245.5	244.3	243.2	242.0	240.3
YESBANK	38.90	Neutral	37.1	37.1	38.7	39.1	38.1	37.5	36.9	36.3	35.3
ZEEL	238.75	Neutral	236.1	239.7	258.8	248.5	242.8	239.0	235.3	231.5	225.8

Research Team Tel: 022 – 71148579

E-mail: research@inventuregrowth.comWebsite: [Inventuregrowth.com](http://www.inventuregrowth.com)

This Report is published by Inventure Growth & Securities Limited (hereinafter referred to as “IGSL”) for private circulation. IGSL is a registered Research Analyst under SEBI (Research Analyst) Regulations, 2014 having Registration no. INH000006129. IGSL is also a registered Stock Broker with National Stock Exchange of India Limited, BSE Limited and Metropolitan Stock Exchange of India Limited (MSE) in cash, F&O & currency derivatives segments. It is also registered as a Depository Participant with CDSL and is also registered with AMFI as a Mutual Fund Distributor

IGSL have not been debarred / suspended by SEBI for Retail & Institutional business or any other regulatory authority for accessing / dealing in securities Market other than PRO business. IGSL, its associates or analyst or his relatives may or may not hold any financial interest in the subject company. IGSL or its associates or Analyst do not have any conflict or material conflict of interest at the time of publication of the research report with the subject company. IGSL or its Affiliates may or may not have been beneficial ownership of one percent or more of the securities mentioned in this report. However, one or more of IGSL or its Affiliates may, from time to time, have a long or short position in any of the securities mentioned herein and may buy or sell those securities or options thereon, either on their own account.

IGSL or its associates / analyst has not received any compensation / managed or co-managed public offering of securities of the company covered by Analyst during the past twelve months. IGSL or its associates have not received any compensation or other benefits from the company covered by Analyst or third party in connection with the research report. Analyst has not served as an officer, director or employee of Subject Company and IGSL / analyst has not been engaged in market making activity of the subject company.

Analyst Certification: I/We, **Virat Jagad** the research analyst is the author of this report, hereby certify that the views expressed in this research report accurately reflects my/our personal views about the subject securities, issuers, products, sectors or industries. It is also certified that no part of the compensation of the analyst(s) was, is, or will be directly or indirectly related to the inclusion of specific recommendations or views in this research. The analyst(s) principally responsible for the preparation of this research report and has taken reasonable care to achieve and maintain independence and objectivity in making any recommendations.

Research Team	Profile	Email ID
Mr. Prashant Barwaliya	Head- Research	Prashant.b@inventuregrowth.com
Mr. Virat Jagad	Technical Analyst	virat.jagad@inventuregrowth.com
Ms. Jeni Rita	Fundamental Analyst	Jeni.rita@inventuregrowth.com
Ms. Darshita Shah	Fundamental Analyst	Darshita.shah@inventuregrowth.com

Created by:**IGSL - Research**

Inventure Growth & Securities Ltd, 201, Viraj Tower, Near Landmark Building,

Western Express Highway, Andheri (East), Mumbai -400 093

Tele: 91-22-71148500 , Fax: 91-22-40751511.

E-mail: Research@inventuregrowth.com , website : <http://www.inventuregrowth.com>**DISCLAIMER**

Inventure Growth and Securities Limited (hereinafter referred to as “IGSL”) is a registered Member of National Stock Exchange of India Limited, Bombay Stock Exchange Limited and Metropolitan Stock Exchange Limited. It is also registered as a Depository Participant with CDSL. It also has registration with AMFI as a Mutual Fund Distributor. Inventure Growth and Securities Limited is a registered entity with SEBI for Research Analyst in terms of SEBI (Research Analyst) Regulations, 2014 vide registration number INH000006129. IGSL has not been debarred/ suspended by SEBI or any other regulatory authority for accessing /dealing in securities Market. IGSL or its associates/ analyst has not received any compensation / managed or co-managed public offering of securities of the company covered by Analyst during the past twelve months.

This document is solely for the personal information of the recipient, and must not be singularly used as the basis of any investment decision. Nothing in this document should be construed as investment or financial advice. Each recipient of this document should make such investigations as they deem necessary to arrive at an independent evaluation of an investment in the securities of the companies referred to in this document (including the merits and risks involved), and should consult their own advisors to determine the merits and risks of such an investment. Reports based on technical and derivative analysis center on studying charts of a stock's price movement, outstanding positions and trading volume, as opposed to focusing on a company's fundamentals and, as such, may not match with a report on a company's fundamentals. Investors are advised to refer the Fundamental and Technical Research Reports available on our website to evaluate the contrary view, if any.

The information in this document has been printed on the basis of publicly available information, internal data and other reliable sources believed to be true, but we do not represent that it is accurate or complete and it should not be relied on as such, as this document is for general guidance only. Inventure Growth and Securities Limited or any of its affiliates/ group companies shall not be in any way responsible for any loss or damage that may arise to any person from any inadvertent error in the information contained in this report. Inventure Growth and Securities Limited has not independently verified all the information contained within this document. Accordingly, we cannot testify, nor make any representation or warranty, express or implied, to the accuracy, contents or data contained within this document. While Inventure Growth and Securities Limited endeavors to update on a reasonable basis the information discussed in this material, there may be regulatory, compliance, or other reasons that prevent us from doing so. This document is being supplied to you solely for your information, and its contents, information or data may not be reproduced, redistributed or passed on, directly or indirectly.

Neither Inventure Growth and Securities Limited , nor its directors, employees or affiliates shall be liable for any loss or damage that may arise from or in connection with the use of this information.