

| SENSEX | NIFTY | INDIAVIX | BANKNIFTY | 10YR G-SEC | USDINR |
|----------|---------|----------|-----------|------------|--------|
| 39872.31 | 11707.9 | 15.78 | 30023.25 | 6.5 | 71.41 |
| 0.34% | 0.39% | -6.25% | 0.68% | -1.50% | -0.07% |

Nifty Short Term View

| Nifty Close | R1 | R2 | S1 | S2 |
|-------------|-------|-------|-------|-------|
| 11707.9 | 11835 | 11950 | 11600 | 11471 |

Indian markets rebound on Monday after three days of losses. Sentiment was underpinned after a private survey showed that activity in India's beleaguered manufacturing sector hit a near eight-year high in January. Nifty index ended up 62.20 points, at 11,724.05.

After a volatile session, bulls manage to close on a positive side where nifty formed green candle on daily chart. Niftys RSI took support near 30 level which indicates that further positivity can be seen up to 11835 level.



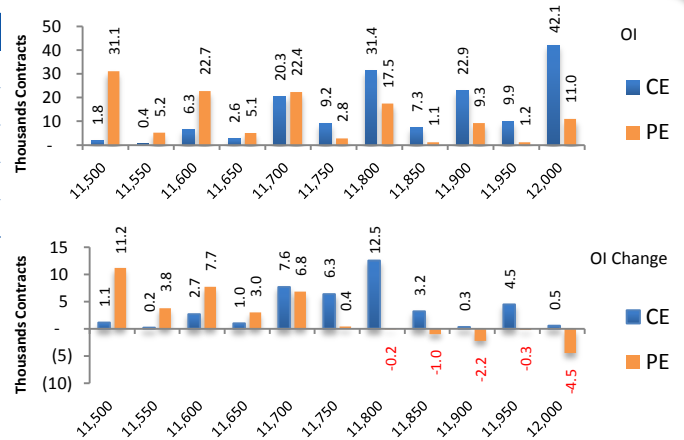
News Buzz

- Kerala government on Monday declared novel coronavirus epidemic as "state calamity" after three people tested positive in the southern India state.
- Fitch Ratings on Monday said India is expected to clock a GDP growth of 5.6 per cent in the next financial year, lower than the projection made by the government's Economic Survey of 6-6.5%, as Budget 2020 has not "materially altered" its view on the country's growth outlook. **Negative for markets**
- D1/D3 gas field, India's first deep water gas field, ceased to produce on Monday after a USD 1 billion investment and mammoth technological intervention by Reliance Industries and its partner BP Plc of UK extended the life of dwindling fields by four years, sources said. **Negative for Reliance Industries**
- India's sugar production declined 24 per cent to 14.1 million tonne during October-January period of the current marketing year because of fall in output in major producing state Maharashtra, according to industry body ISMA. **Negative for sugar stocks**
- Buyers of loss-making airline Air India and oil firm Bharat Petroleum Corporation Ltd (BPCL) will not get a free hand to shed excess workforce as the government will build in certain protection to employees in the share sale agreement, DIPAM Secretary Tuhin Kanta Pandey said. **Negative for BPCL**
- Deepak Nitrite posted a 44% jump in the revenue to Rs. 1,119 crore on YoY basis in the third quarter of FY2020 and a 292% jump in the net profit to Rs. 157 crore. **Positive for Deepak Nitrite**
- Affle India posted a 27% increase in the revenue to Rs. 94.5 crore, on YoY basis in the third quarter of FY2020 and posted a 31.3% increase in the net profit to Rs. 21.4 crore. **Positive for Affle India**
- JK Cement has successfully commissioned grey cement grinding capacity in the states of Rajasthan and UP. **Positive for JK Cement**
- GMR Hyderabad International Airport signs agreement to operate Bidar Airport in the state Karnataka. **Positive for GMR Infrastructure**
- **Results on February 3:** Adani Green, Apollo Pipes, Avanti Feeds, Bharti Airtel, Gati, Grindwell Norton, Liberty Shoes, Piramal Enterprises, PNB, REC Ltd., Shipping Corporation of India, Tata Global Beverages, Thermax, Titan, TVS Motors

Derivative Activity

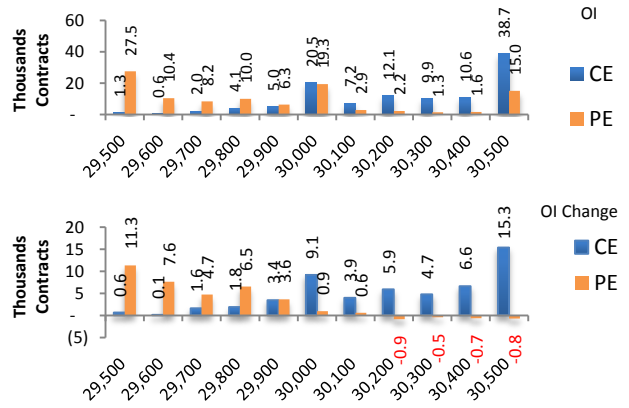
| Index | NIFTY | Change |
|-------------|----------|----------|
| Fut Closing | 11703.15 | 0.4% |
| Prem /Disc | -4.75 | 2.20 |
| OI Qty | 1.47 Cr. | 21.6% |
| Nifty PCR | 0.77 | |
| Highest OI | 12000 CE | 12000 PE |

- NIFTY future was up 0.41% with increase in OI by 21.58%.
- Nifty Put OI addition was seen at 11500 followed by 11600 which can act as short term support
- Nifty Call OI addition was seen at 11800 followed by 11700. which can act as short term resistance



| Index | BANKNIFTY | Change |
|-------------|-----------|----------|
| Fut Closing | 30032.15 | 0.5% |
| Prem/Disc | 8.90 | -43.60 |
| OI Qty | 0.14 Cr. | 28.7% |
| Highest OI | 30500 CE | 29000 PE |

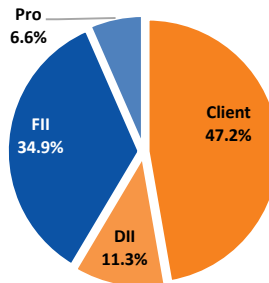
- Nifty Bank future was up 0.53% with increase in OI by 28.71%.
- Nifty Bank Put OI addition was seen at 29500 followed by 29600 which can act as short term support.
- Nifty Bank Call OI addition was seen at 30500 followed by 30000 which can act as short term resistance.



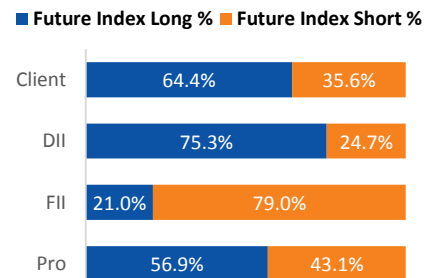
Participant wise OI Activity (Fig in '000 Contracts)

| Participant Type | Index Fut Activity | Call Activity | Put Activity |
|------------------|--------------------|---------------|--------------|
| Retail | 3.8 | -30.2 | 24.4 |
| DII | -3.6 | 0.0 | 0.0 |
| FII | 6.4 | 18.9 | 18.5 |
| Pro | -6.6 | 11.3 | -42.9 |

Index Fut OI %



Index Future OI %



- FII added long Index future by 6.4k contracts and Client added long Index future by 3.8k contracts
- FII added Long calls by 18.9k contracts and added long puts by 18.5 k contracts
- Client unwound the long calls by 30.2k contracts and added long puts by 24.4 k contracts

Open Interest Gainers

| Symbol | Trend | Future Price | Price Chng % | Fut OI Chng % |
|------------|---------|--------------|--------------|---------------|
| COALINDIA | Bearish | 171.8 | 2.4% | 27.3% |
| ONGC | Bearish | 99.15 | -0.8% | 22.0% |
| POWERGRID | Bearish | 176.3 | 2.1% | 18.4% |
| NTPC | Bearish | 106.8 | 1.7% | 17.4% |
| IBULHSGFIN | Bearish | 244.8 | -7.7% | 16.8% |

Volume Gainers

| Symbol | Trend | Future Price | Price Chng % | 3 Day Vol Chng % |
|------------|---------|--------------|--------------|------------------|
| ICICIPRULI | Bearish | 447.8 | -1.1% | 117.2% |
| TATACHEM | Bullish | 743.5 | 0.2% | 114.7% |
| MFSL | Bearish | 475.75 | 8.8% | 77.7% |
| ITC | Bearish | 208.3 | -5.3% | 67.7% |
| DLF | Bearish | 228.85 | 0.3% | 65.9% |

Stocks Near Highest Call Open Interest

| Symbol | Trend | Future Price | Highest Call OI | No of Contracts |
|------------|---------|--------------|-----------------|-----------------|
| BAJAJ-AUTO | Bullish | 3285.7 | 3300 | 352 |
| DABUR | Bullish | 499.2 | 500 | 168 |
| BIOCON | Bullish | 298.65 | 300 | 121 |

Open interest Losers

| Symbol | Trend | Future Price | Price Chng % | Fut OI Chng % |
|------------|---------|--------------|--------------|---------------|
| MFSL | Bearish | 475.75 | 8.8% | -29.0% |
| INDUSINDBK | Bearish | 1262.65 | 4.2% | -10.6% |
| JUBLFOOD | Bullish | 1960.1 | 3.9% | -9.9% |
| TECHM | Bullish | 794.3 | -1.6% | -7.5% |
| EQUITAS | Bearish | 104.65 | 1.8% | -7.1% |

Highest Position Carry forward %

| Symbol | Trend | Future Price | Price Chng % | O I Chng / Volume |
|-----------|---------|--------------|--------------|-------------------|
| NTPC | Bearish | 106.8 | 1.7% | 67.1% |
| ONGC | Bearish | 99.15 | -0.8% | 55.6% |
| COALINDIA | Bearish | 171.8 | 2.4% | 51.7% |
| POWERGRID | Bearish | 176.3 | 2.1% | 48.2% |
| TATAPOWER | Bearish | 55.1 | -0.4% | 37.1% |

Stocks Near Highest Put Open Interest

| Symbol | Trend | Future Price | Highest Put OI | No of Contracts |
|----------|-------|--------------|----------------|-----------------|
| SHREECEM | | 23322.9 | 23375 | 4 |
| MRF | | 69761.6 | 70000 | 3 |

Nifty 50 Daily Levels

| Symbol | Cash Close | Trend | 5 Day SMA | 10 Day SMA | 20 Day SMA | R3 | R2 | R1 | Mid Point | S1 | S2 | S3 |
|-------------|------------|---------|-----------|------------|------------|---------|---------|---------|----------------|-------|-------|-------|
| NIFTY50 | 11,707.90 | DOWN | 11969.0 | 12066.9 | 12159.4 | 11789.4 | 11737.1 | 11701.8 | 11684.9 | 11668 | 11633 | 11580 |
| NIFTYBANK | 30,023.25 | DOWN | 30588.1 | 30767.3 | 31261.7 | 30189.8 | 30055.7 | 29965.3 | 29922.1 | 29879 | 29788 | 29654 |
| NIFTYIT | 16,059.90 | DOWN | 16332.8 | 16351.4 | 16256.4 | 16316.0 | 16243.5 | 16194.7 | 16171.3 | 16148 | 16099 | 16027 |
| ADANIPO RTS | 367.35 | DOWN | 373.2 | 378.1 | 383.2 | 371.9 | 368.3 | 366.0 | 364.8 | 364 | 361 | 358 |
| ASIANPAINT | 1,867.65 | UP | 1786.4 | 1787.3 | 1793.6 | 1841.4 | 1826.4 | 1816.3 | 1811.5 | 1807 | 1797 | 1782 |
| AXISBANK | 708.95 | DOWN | 727.6 | 726.9 | 731.9 | 720.5 | 713.8 | 709.3 | 707.2 | 705 | 701 | 694 |
| BAJAJ-AUTO | 3,284.50 | UP | 3124.3 | 3101.7 | 3097.7 | 3256.5 | 3235.2 | 3220.8 | 3213.9 | 3207 | 3193 | 3171 |
| BAJFINANCE | 4,362.05 | UP | 4327.7 | 4240.4 | 4195.0 | 4396.6 | 4357.8 | 4331.6 | 4319.1 | 4307 | 4280 | 4241 |
| BAJAJFINSV | 9,105.00 | DOWN | 9510.8 | 9536.1 | 9494.0 | 9186.4 | 9106.2 | 9052.1 | 9026.2 | 9000 | 8946 | 8866 |
| BPCL | 460.75 | DOWN | 466.0 | 465.2 | 464.9 | 464.4 | 458.2 | 454.1 | 452.1 | 450 | 446 | 440 |
| BHARTIARTL | 510.05 | UP | 493.0 | 505.4 | 488.2 | 519.4 | 511.5 | 506.2 | 503.6 | 501 | 496 | 488 |
| INFRA TEL | 229.30 | DOWN | 244.9 | 243.4 | 241.7 | 250.3 | 244.3 | 240.2 | 238.2 | 236 | 232 | 226 |
| BRITANNIA | 3,230.05 | UP | 3180.9 | 3160.2 | 3115.1 | 3219.7 | 3191.7 | 3172.9 | 3163.8 | 3155 | 3136 | 3108 |
| CIPLA | 444.40 | DOWN | 453.7 | 460.2 | 468.3 | 452.5 | 448.4 | 445.6 | 444.3 | 443 | 440 | 436 |
| COALINDIA | 178.65 | DOWN | 184.7 | 189.5 | 198.0 | 180.6 | 178.3 | 176.8 | 176.1 | 175 | 174 | 172 |
| DRREDDY | 3,144.15 | NEUTRAL | 3146.0 | 3111.1 | 3029.9 | 3182.2 | 3157.9 | 3141.5 | 3133.6 | 3126 | 3109 | 3085 |
| EICHERMOT | 19,883.45 | DOWN | 20393.6 | 20706.6 | 20705.6 | 20448.7 | 20209.6 | 20048.5 | 19971.4 | 19894 | 19733 | 19494 |
| GAIL | 114.50 | DOWN | 122.8 | 125.2 | 126.2 | 119.0 | 117.5 | 116.6 | 116.1 | 116 | 115 | 113 |
| GRASIM | 780.40 | NEUTRAL | 788.2 | 794.9 | 776.5 | 789.2 | 779.5 | 773.0 | 769.9 | 767 | 760 | 751 |
| HCLTECH | 579.10 | DOWN | 600.1 | 598.6 | 593.7 | 593.7 | 589.3 | 586.4 | 585.0 | 584 | 581 | 576 |
| HDFCBANK | 1,192.80 | DOWN | 1222.0 | 1229.8 | 1252.5 | 1211.6 | 1203.7 | 1198.3 | 1195.8 | 1193 | 1188 | 1180 |
| HEROMOTOCO | 2,376.15 | DOWN | 2477.3 | 2453.8 | 2424.0 | 2450.9 | 2431.2 | 2417.9 | 2411.5 | 2405 | 2392 | 2372 |
| HINDALCO | 181.80 | DOWN | 192.2 | 197.8 | 204.0 | 187.1 | 185.1 | 183.8 | 183.1 | 182 | 181 | 179 |
| HINDUNILVR | 2,178.95 | UP | 2060.4 | 2060.1 | 2026.9 | 2156.2 | 2141.5 | 2131.6 | 2126.9 | 2122 | 2112 | 2098 |
| HDFC | 2,260.80 | DOWN | 2386.6 | 2409.0 | 2433.0 | 2303.0 | 2283.7 | 2270.7 | 2264.5 | 2258 | 2245 | 2226 |
| ICICIBANK | 515.55 | DOWN | 523.5 | 527.0 | 531.1 | 520.5 | 515.3 | 511.8 | 510.1 | 508 | 505 | 500 |
| ITC | 207.60 | DOWN | 231.1 | 234.3 | 236.7 | 217.3 | 215.3 | 213.9 | 213.3 | 213 | 211 | 209 |
| IOC | 108.05 | DOWN | 115.1 | 116.0 | 120.0 | 110.6 | 109.6 | 108.8 | 108.5 | 108 | 107 | 106 |
| INDUSINDBK | 1,263.10 | NEUTRAL | 1242.9 | 1279.7 | 1360.4 | 1277.4 | 1257.2 | 1243.6 | 1237.1 | 1231 | 1217 | 1197 |
| INFY | 767.40 | NEUTRAL | 780.8 | 778.2 | 765.7 | 796.6 | 785.0 | 777.2 | 773.5 | 770 | 762 | 750 |
| JSWSTEEL | 251.85 | DOWN | 253.8 | 260.3 | 267.6 | 255.0 | 251.6 | 249.4 | 248.3 | 247 | 245 | 242 |
| KOTAKBANK | 1,676.25 | UP | 1646.9 | 1631.2 | 1652.4 | 1690.0 | 1676.0 | 1666.6 | 1662.1 | 1658 | 1648 | 1634 |
| LT | 1,286.65 | DOWN | 1347.9 | 1337.6 | 1327.3 | 1308.5 | 1297.7 | 1290.5 | 1287.0 | 1284 | 1276 | 1266 |
| M&M | 558.70 | DOWN | 566.1 | 564.9 | 559.0 | 563.5 | 557.7 | 553.8 | 552.0 | 550 | 546 | 540 |
| MARUTI | 7,011.30 | NEUTRAL | 6950.8 | 7061.7 | 7196.9 | 7038.4 | 6975.1 | 6932.4 | 6912.0 | 6892 | 6849 | 6786 |
| NTPC | 110.25 | DOWN | 112.2 | 113.2 | 117.1 | 111.4 | 110.6 | 110.0 | 109.8 | 110 | 109 | 108 |
| NESTLEIND | 16,301.00 | UP | 15537.7 | 15548.8 | 15204.9 | 16188.6 | 16050.5 | 15957.4 | 15912.9 | 15868 | 15775 | 15637 |
| ONGC | 103.45 | DOWN | 112.6 | 115.6 | 120.0 | 106.2 | 105.0 | 104.3 | 103.9 | 104 | 103 | 102 |
| POWERGRID | 187.35 | DOWN | 189.3 | 193.9 | 194.5 | 187.9 | 186.4 | 185.4 | 184.9 | 184 | 183 | 182 |
| RELIANCE | 1,385.50 | DOWN | 1438.1 | 1481.3 | 1509.7 | 1409.2 | 1396.8 | 1388.4 | 1384.4 | 1380 | 1372 | 1360 |
| SBIN | 298.10 | DOWN | 312.7 | 315.7 | 319.8 | 309.1 | 304.7 | 301.8 | 300.4 | 299 | 296 | 292 |
| SUNPHARMA | 417.55 | DOWN | 440.4 | 444.2 | 445.2 | 428.1 | 424.1 | 421.5 | 420.2 | 419 | 416 | 412 |
| TCS | 2,102.50 | DOWN | 2144.0 | 2164.2 | 2189.2 | 2175.5 | 2154.6 | 2140.4 | 2133.7 | 2127 | 2113 | 2092 |
| TATAMOTORS | 163.85 | DOWN | 178.5 | 182.7 | 188.2 | 172.3 | 168.5 | 166.0 | 164.7 | 163 | 161 | 157 |
| TATASTEEL | 436.05 | DOWN | 441.9 | 458.7 | 474.2 | 442.2 | 436.1 | 431.9 | 429.9 | 428 | 424 | 418 |
| TECHM | 793.15 | NEUTRAL | 798.8 | 789.9 | 785.6 | 811.8 | 806.1 | 802.2 | 800.4 | 798 | 795 | 789 |
| TITAN | 1,186.40 | NEUTRAL | 1184.3 | 1192.1 | 1181.1 | 1204.6 | 1192.2 | 1183.8 | 1179.8 | 1176 | 1167 | 1155 |
| UPL | 513.30 | DOWN | 530.7 | 541.7 | 567.0 | 518.8 | 513.6 | 510.1 | 508.5 | 507 | 503 | 498 |
| ULTRACEMCO | 4,370.65 | DOWN | 4468.9 | 4515.1 | 4471.5 | 4405.9 | 4361.9 | 4332.2 | 4318.0 | 4304 | 4274 | 4230 |
| VEDL | 134.15 | DOWN | 139.6 | 146.4 | 153.2 | 138.5 | 136.5 | 135.2 | 134.5 | 134 | 133 | 131 |
| WIPRO | 237.40 | DOWN | 241.0 | 244.0 | 248.2 | 240.4 | 238.7 | 237.6 | 237.1 | 237 | 235 | 234 |
| YESBANK | 36.00 | DOWN | 39.8 | 40.2 | 41.2 | 40.1 | 38.5 | 37.5 | 37.0 | 36 | 35 | 34 |
| ZEEL | 256.60 | DOWN | 267.3 | 276.0 | 273.4 | 268.8 | 261.8 | 257.0 | 254.8 | 253 | 248 | 241 |

Research Team Tel: 022 – 71148579

E-mail: research@inventuregrowth.comWebsite: [Inventuregrowth.com](http://www.inventuregrowth.com)

This Report is published by Inventure Growth & Securities Limited (hereinafter referred to as “IGSL”) for private circulation. IGSL is a registered Research Analyst under SEBI (Research Analyst) Regulations, 2014 having Registration no. INH000006129. IGSL is also a registered Stock Broker with National Stock Exchange of India Limited, BSE Limited and Metropolitan Stock Exchange of India Limited (MSE) in cash, F&O & currency derivatives segments. It is also registered as a Depository Participant with CDSL and is also registered with AMFI as a Mutual Fund Distributor

IGSL have not been debarred / suspended by SEBI for Retail & Institutional business or any other regulatory authority for accessing / dealing in securities Market other than PRO business. IGSL, its associates or analyst or his relatives may or may not hold any financial interest in the subject company. IGSL or its associates or Analyst do not have any conflict or material conflict of interest at the time of publication of the research report with the subject company. IGSL or its Affiliates may or may not have been beneficial ownership of one percent or more of the securities mentioned in this report. However, one or more of IGSL or its Affiliates may, from time to time, have a long or short position in any of the securities mentioned herein and may buy or sell those securities or options thereon, either on their own account.

IGSL or its associates / analyst has not received any compensation / managed or co-managed public offering of securities of the company covered by Analyst during the past twelve months. IGSL or its associates have not received any compensation or other benefits from the company covered by Analyst or third party in connection with the research report. Analyst has not served as an officer, director or employee of Subject Company and IGSL / analyst has not been engaged in market making activity of the subject company.

Analyst Certification: I/We, **Virat Jagad** the research analyst is the author of this report, hereby certify that the views expressed in this research report accurately reflects my/our personal views about the subject securities, issuers, products, sectors or industries. It is also certified that no part of the compensation of the analyst(s) was, is, or will be directly or indirectly related to the inclusion of specific recommendations or views in this research. The analyst(s) principally responsible for the preparation of this research report and has taken reasonable care to achieve and maintain independence and objectivity in making any recommendations.

| Research Team | Profile | Email ID |
|------------------------|---------------------|-----------------------------------|
| Mr. Prashant Barwaliya | Head- Research | Prashant.b@inventuregrowth.com |
| Mr. Virat Jagad | Technical Analyst | virat.jagad@inventuregrowth.com |
| Ms. Jeni Rita | Fundamental Analyst | Jeni.rita@inventuregrowth.com |
| Ms. Darshita Shah | Fundamental Analyst | Darshita.shah@inventuregrowth.com |

Created by:**IGSL - Research**

Inventure Growth & Securities Ltd, 201, Viraj Tower, Near Landmark Building,

Western Express Highway, Andheri (East), Mumbai -400 093

Tele: 91-22-71148500 , Fax: 91-22-40751511.

E-mail: Research@inventuregrowth.com , website : <http://www.inventuregrowth.com>**DISCLAIMER**

Inventure Growth and Securities Limited (hereinafter referred to as “IGSL”) is a registered Member of National Stock Exchange of India Limited, Bombay Stock Exchange Limited and Metropolitan Stock Exchange Limited. It is also registered as a Depository Participant with CDSL. It also has registration with AMFI as a Mutual Fund Distributor. Inventure Growth and Securities Limited is a registered entity with SEBI for Research Analyst in terms of SEBI (Research Analyst) Regulations, 2014 vide registration number INH000006129. IGSL has not been debarred/ suspended by SEBI or any other regulatory authority for accessing /dealing in securities Market. IGSL or its associates/ analyst has not received any compensation / managed or co-managed public offering of securities of the company covered by Analyst during the past twelve months.

This document is solely for the personal information of the recipient, and must not be singularly used as the basis of any investment decision. Nothing in this document should be construed as investment or financial advice. Each recipient of this document should make such investigations as they deem necessary to arrive at an independent evaluation of an investment in the securities of the companies referred to in this document (including the merits and risks involved), and should consult their own advisors to determine the merits and risks of such an investment. Reports based on technical and derivative analysis center on studying charts of a stock's price movement, outstanding positions and trading volume, as opposed to focusing on a company's fundamentals and, as such, may not match with a report on a company's fundamentals. Investors are advised to refer the Fundamental and Technical Research Reports available on our website to evaluate the contrary view, if any.

The information in this document has been printed on the basis of publicly available information, internal data and other reliable sources believed to be true, but we do not represent that it is accurate or complete and it should not be relied on as such, as this document is for general guidance only. Inventure Growth and Securities Limited or any of its affiliates/ group companies shall not be in any way responsible for any loss or damage that may arise to any person from any inadvertent error in the information contained in this report. Inventure Growth and Securities Limited has not independently verified all the information contained within this document. Accordingly, we cannot testify, nor make any representation or warranty, express or implied, to the accuracy, contents or data contained within this document. While Inventure Growth and Securities Limited endeavors to update on a reasonable basis the information discussed in this material, there may be regulatory, compliance, or other reasons that prevent us from doing so. This document is being supplied to you solely for your information, and its contents, information or data may not be reproduced, redistributed or passed on, directly or indirectly.

Neither Inventure Growth and Securities Limited , nor its directors, employees or affiliates shall be liable for any loss or damage that may arise from or in connection with the use of this information.