

SENSEX	NIFTY	INDIAVIX	BANKNIFTY	10YR G-SEC	USDINR
39735.53	11661.85	16.84	29820.9	6.6	71.35
-2.43%	-2.51%	-3.07%	-3.28%	0.66%	0.19%

Nifty Short Term View

Nifty Close	R1	R2	S1	S2
11661.85	11883	11950	11600	11471

Indian shares ended a volatile session lower on Saturday to extend losses for the third day running. Finance Minister Nirmala Sitharaman's second Budget failed to lift market sentiment. Nifty index dropped 300.25 points, to 11661.85.

Nifty managed to hold Nifty above 200 DMA which was support. It seems bears hold a strong stance in the market which may result in further downside in the near future. However, Index has corrected more than 750 points from top in just two weeks. So, small pullback can not e rules out.

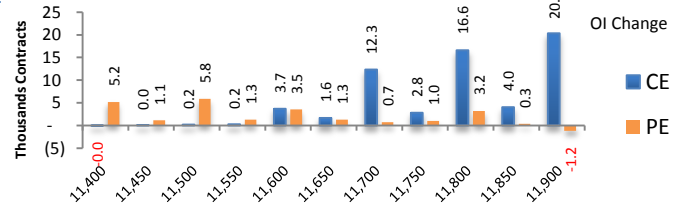
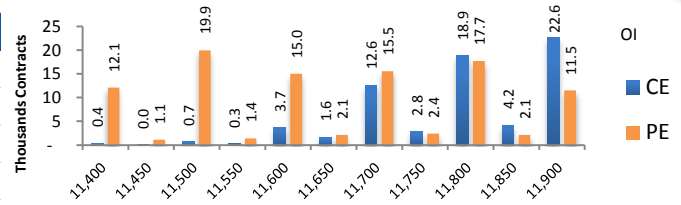


News Buzz

- HCL Technologies is looking to increase the workforce at its Lucknow facility by 50 per cent by the end of next financial year 2020-21. From the current headcount of 4,000, the company plans to add 2,000 employees to cater its business expansion roadmap. **Positive for HCL Technologies**
- Hero MotoCorp on Saturday said its total sales in January declined by 13.9 per cent to 5,01,622 units. Domestic sales fell by 14.35% on YoY basis to 4,88,069 units as compared with 5,69,866 units of two wheelers sold in the same month last year. The exports grew by 5.93% to 13,533 units sold in the month. **Negative for Hero MotoCorp**
- Mahindra and Mahindra (M&M) on Saturday reported a 4 per cent increase in tractor sales at 23,116 units in January. Domestic sales increased 7 per cent to 22,329 units in January as compared with 20,948 units of tractor sold in the same month of 2019, the company said in a statement. However, exports declined 38 per cent to 787 units in the previous month as compared with 1,264 units in January 2019, it said. **Positive for Mahindra and Mahindra**
- Maruti Suzuki India on Saturday reported a 1.6% increase in sales at 1,54,123 units in January. Domestic sales increased by 1.7% at 1,44,499 units last month, as against 1,42,150 units in January 2018, it added. **Positive for Maruti Suzuki**
- Eicher Motors reported a 13% fall in total sales at 63,520 units against 72,701 units on month on month basis. Total exports went up 22% at 2,228 units against 1,829 units on month on month basis. **Negative for Eicher Motors**
- Tata Motors on Saturday reported a 17.74% decline in total sales at 47,862 units in January. Total domestic sales were down 18% at 45,242 units as compared to 54,915 units in January last year, it added. **Negative for Tata Motors**
- State-owned Coal India Ltd (CIL) on Saturday said it produced 451.52 million tonnes of coal in April-January period of the ongoing fiscal, a decline of 3.8 per cent. The company had produced 469.65 million tonnes (MT) of coal in the year-ago period, CIL said in a filing to the BSE. However, the PSU's coal output in January rose 10.3 per cent to 63.11 MT as compared with 57.21 MT in the corresponding month of previous fiscal. **Positive for Coal India**
- Centrum Housing Finance Ltd, a unit of the Centrum Group, on Sunday, said that a fund managed by Morgan Stanley Private Equity Asia has agreed to invest Rs. 190 crore equity capital to acquire a significant minority stake in the affordable housing finance company. **Positive for Centrum Housing**
- Results on February 3:** Affle, AstraZeneca, Deepak Nitrite, Galaxy Surfactants, GSK Pharmaceuticals, Hawkins Cooker, Dr. Lal Path Labs, Shriram Transport Finance Ltd., Ujjivan Financial Services Ltd.

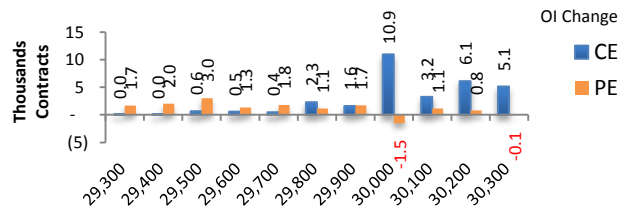
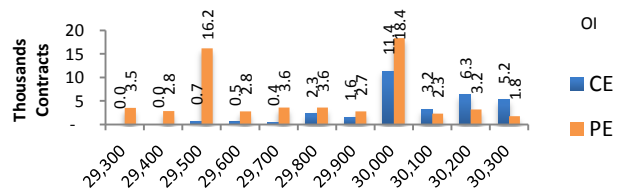
Index	NIFTY	Change
Fut Closing	11654.9	-2.8%
Prem /Disc	-6.95	-39.15
OI Qty	1.47 Cr.	36.8%
Nifty PCR	0.66	
Highest OI	12200 CE 12000 PE	

- NIFTY future was Down 2.83% with increase in OI by 36.85%.
- Nifty Put OI addition was seen at 11500 followed by 11400 which can act as short term support
- Nifty Call OI addition was seen at 11900 followed by 11800. which can act as short term resistance



Index	BANKNIFTY	Change
Fut Closing	29873.4	-3.4%
Prem/Disc	52.50	-51.20
OI Qty	0.14 Cr.	17.3%
Highest OI	32000 CE 29000 PE	

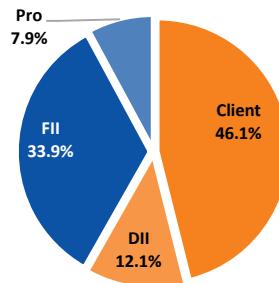
- Nifty Bank future was Down 3.44% with increase in OI by 17.31%.
- Nifty Bank Put OI addition was seen at 29500 followed by 29400 which can act as short term support.
- Nifty Bank Call OI addition was seen at 30000 followed by 30200 which can act as short term resistance.



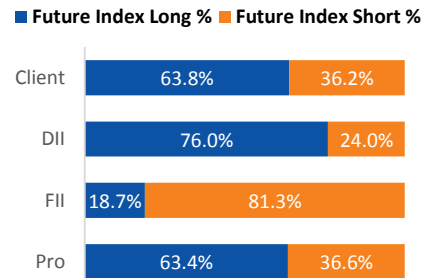
Participant wise OI Activity (Fig in '000 Contracts)

Participant Type	Index Fut Activity	Call Activity	Put Activity
Retail	3.3	157.2	-25.7
DII	6.9	0.0	0.0
FII	-12.5	-30.6	11.6
Pro	2.3	-126.6	14.1

Index Fut OI %



Index Future OI %



- FII added short Index future by 12.5k contracts and Client added long Index future by 3.3k contracts
- FII added Short calls by 30.6k contracts and added long puts by 11.6 k contracts
- Client added Long calls by 157.2k contracts and added short puts by 25.7 k contracts

Open Interest Gainers

Symbol	Trend	Future Price	Price Chng %	Fut OI Chng %
COALINDIA	Bearish	167.7	-6.4%	98.6%
BEL	Bearish	82.45	-6.8%	95.2%
NTPC	Bearish	105.05	-4.6%	81.3%
POWERGRID	Bearish	172.65	-4.3%	64.0%
ONGC	Bearish	100	-5.7%	60.7%

Volume Gainers

Symbol	Trend	Future Price	Price Chng %	3 Day Vol Chng %
ICICIPRULI	Bearish	452.85	-11.8%	68.8%
DLF	Bearish	228.15	-12.3%	59.1%
LICHSGFIN	Bearish	403.8	-7.9%	41.0%
COALINDIA	Bearish	167.7	-6.4%	30.7%
MFSL	Bearish	437.45	-13.7%	28.7%

Stocks Near Highest Call Open Interest

Symbol	Trend	Future Price	Highest Call OI	No of Contracts
BHARTIARTL	Bullish	498.2	500	543

Open interest Losers

Symbol	Trend	Future Price	Price Chng %	Fut OI Chng %
ESCORTS	Bullish	775.9	-3.6%	-23.6%
MFSL	Bearish	437.45	-13.7%	-19.1%
EQUITAS	Bearish	102.75	-5.9%	-16.6%
MOTHERSUMI	Bearish	128.35	-4.1%	-6.8%
SRF	Bullish	3697.2	-1.9%	-6.5%

Highest Position Carry forward %

Symbol	Trend	Future Price	Price Chng %	O I Chng / Volume
BEL	Bearish	82.45	-6.8%	90.7%
ONGC	Bearish	100	-5.7%	77.9%
POWERGRID	Bearish	172.65	-4.3%	68.1%
COALINDIA	Bearish	167.7	-6.4%	67.4%
NMDC	Bearish	100.7	-12.1%	57.3%

Stocks Near Highest Put Open Interest

Symbol	Trend	Future Price	Highest Put OI	No of Contracts
ADANIPOWER	Bearish	59.7	60	78
BATAINDIA	Bullish	1804.15	1800	59
APOLLOTYRE	Bearish	165.85	165	38

Nifty 50 Daily Levels

Symbol	Cash Close	Trend	5 Day SMA	10 Day SMA	20 Day SMA	R3	R2	R1	Mid Point	S1	S2	S3
NIFTY50	11,661.85	DOWN	12060.4	12123.2	12176.0	11919.5	11865.7	11829.3	11812.0	11795	11758	11704
NIFTYBANK	29,820.90	DOWN	30791.4	30893.2	31332.6	30603.3	30465.1	30371.8	30327.3	30283	30189	30051
NIFTYIT	16,282.65	NEUTRAL	16354.9	16343.9	16236.3	16361.0	16287.1	16237.2	16213.4	16190	16140	16066
ADANIPO RTS	362.30	DOWN	377.0	379.9	384.1	372.9	369.4	367.0	365.9	365	362	359
ASIANPAINT	1,755.35	DOWN	1793.0	1796.7	1791.2	1801.0	1788.2	1779.6	1775.5	1771	1763	1750
AXISBANK	705.45	DOWN	734.6	729.1	732.8	730.9	724.1	719.6	717.4	715	711	704
BAJAJ-AUTO	3,143.30	UP	3112.2	3097.7	3092.4	3199.5	3180.6	3167.8	3161.7	3156	3143	3124
BAJFINANCE	4,276.05	NEUTRAL	4305.3	4228.0	4181.0	4398.0	4359.4	4333.4	4321.0	4309	4283	4244
BAJAJFINSV	8,947.40	DOWN	9632.8	9598.7	9498.7	9356.4	9275.3	9220.6	9194.4	9168	9114	9032
BPCL	443.50	DOWN	470.9	466.6	466.2	462.2	456.2	452.2	450.2	448	444	438
BHARTIARTL	497.35	NEUTRAL	496.4	506.5	485.8	512.5	504.7	499.4	496.9	494	489	481
INFRA TEL	247.15	UP	243.8	240.9	241.5	260.1	253.9	249.7	247.7	246	242	235
BRITANNIA	3,097.60	DOWN	3196.2	3161.5	3111.3	3202.3	3175.7	3157.7	3149.2	3141	3123	3096
CIPLA	444.20	DOWN	457.7	463.8	469.4	454.0	449.8	446.9	445.6	444	441	437
COALINDIA	173.50	DOWN	188.6	192.3	199.7	182.1	179.9	178.3	177.6	177	175	173
DRREDDY	3,123.05	NEUTRAL	3159.1	3104.7	3017.7	3167.2	3142.9	3126.6	3118.8	3111	3095	3070
EICHANMOT	20,059.25	DOWN	20600.7	20837.2	20745.7	20672.5	20423.0	20254.8	20174.3	20094	19926	19676
GAIL	117.70	DOWN	124.6	126.3	126.5	122.0	120.5	119.5	119.1	119	118	116
GRASIM	759.40	DOWN	798.9	796.3	775.4	788.6	778.9	772.3	769.2	766	759	750
HCLTECH	590.90	DOWN	602.8	598.5	593.3	599.8	595.5	592.5	591.2	590	587	583
HDFCBANK	1,199.00	DOWN	1224.9	1235.4	1254.6	1228.8	1220.7	1215.3	1212.7	1210	1205	1196
HEROMOTOCO	2,446.90	NEUTRAL	2479.0	2450.7	2420.1	2514.2	2494.2	2480.8	2474.4	2468	2455	2435
HINDALCO	184.40	DOWN	195.0	200.1	205.3	191.1	189.0	187.6	186.9	186	185	183
HINDUNILVR	2,073.60	UP	2057.7	2058.9	2018.9	2078.8	2066.3	2057.9	2053.9	2050	2042	2029
HDFC	2,268.25	DOWN	2412.1	2427.6	2438.8	2382.0	2361.5	2347.7	2341.1	2335	2321	2300
ICICIBANK	504.60	DOWN	530.0	530.0	532.1	525.7	520.4	516.8	515.1	513	510	505
ITC	219.00	DOWN	234.2	236.6	237.5	231.2	229.1	227.7	227.1	226	225	223
IOC	108.90	DOWN	116.9	116.8	120.8	113.4	112.3	111.5	111.2	111	110	109
INDUSINDBK	1,210.90	DOWN	1254.9	1291.8	1373.4	1274.4	1254.6	1241.3	1234.9	1228	1215	1195
INFY	779.50	NEUTRAL	780.5	777.1	763.6	800.9	789.3	781.5	777.7	774	766	755
JSWSTEEL	244.75	DOWN	257.4	263.0	268.5	254.3	251.0	248.8	247.7	247	244	241
KOTAKBANK	1,647.95	NEUTRAL	1641.0	1628.2	1652.7	1697.7	1683.8	1674.4	1669.9	1665	1656	1642
LT	1,287.25	DOWN	1360.1	1339.8	1328.8	1350.7	1339.5	1331.9	1328.3	1325	1317	1306
M&M	545.20	DOWN	572.7	567.1	558.0	568.1	562.1	558.1	556.2	554	550	544
MARUTI	6,812.65	DOWN	7018.0	7125.4	7208.4	6995.7	6929.3	6884.5	6863.1	6842	6797	6730
NTPC	109.30	DOWN	113.0	114.1	117.6	112.8	111.9	111.3	111.1	111	110	109
NESTLEIND	15,524.75	NEUTRAL	15565.9	15538.1	15149.5	15691.4	15566.5	15482.4	15442.1	15402	15318	15193
ONGC	104.35	DOWN	115.2	117.4	121.1	109.0	107.8	107.0	106.7	106	105	104
POWERGRID	182.40	DOWN	191.4	196.1	195.0	187.7	186.2	185.1	184.6	184	183	182
RELIANCE	1,383.35	DOWN	1462.7	1496.2	1515.6	1422.5	1410.0	1401.5	1397.5	1393	1385	1373
SBIN	302.60	DOWN	315.4	316.8	320.6	320.1	315.3	312.1	310.5	309	306	301
SUNPHARMA	422.80	DOWN	445.6	446.9	446.1	436.6	432.6	429.9	428.6	427	425	420
TCS	2,164.85	NEUTRAL	2144.9	2164.7	2190.9	2163.1	2142.5	2128.6	2122.0	2115	2101	2081
TATAMOTORS	165.60	DOWN	181.8	185.6	189.2	179.1	175.1	172.4	171.1	170	167	163
TATASTEEL	423.80	DOWN	449.6	465.4	476.7	443.6	437.4	433.2	431.3	429	425	419
TECHM	807.55	UP	795.6	787.0	783.8	813.4	807.7	803.9	802.1	800	796	791
TITAN	1,173.25	DOWN	1192.4	1193.6	1180.4	1205.4	1192.9	1184.5	1180.5	1176	1168	1156
UPL	503.65	DOWN	537.4	549.8	571.1	525.5	520.3	516.8	515.1	513	510	505
ULTRACEMCO	4,265.25	DOWN	4551.3	4535.4	4466.1	4428.1	4384.3	4354.8	4340.7	4327	4297	4253
VEDL	134.90	DOWN	142.4	148.6	154.0	140.4	138.4	137.1	136.4	136	134	132
WIPRO	236.80	DOWN	242.7	245.1	249.0	240.1	238.4	237.3	236.8	236	235	234
YESBANK	37.90	DOWN	40.7	40.3	41.5	41.9	40.2	39.1	38.6	38	37	35
ZEEL	252.95	DOWN	272.5	277.8	273.8	275.5	268.2	263.4	261.1	259	254	247

Research Team Tel: 022 – 71148579

E-mail: research@inventuregrowth.comWebsite: [Inventuregrowth.com](http://www.inventuregrowth.com)

This Report is published by Inventure Growth & Securities Limited (hereinafter referred to as "IGSL") for private circulation. IGSL is a registered Research Analyst under SEBI (Research Analyst) Regulations, 2014 having Registration no. INH000006129. IGSL is also a registered Stock Broker with National Stock Exchange of India Limited, BSE Limited and Metropolitan Stock Exchange of India Limited (MSE) in cash, F&O & currency derivatives segments. It is also registered as a Depository Participant with CDSL and is also registered with AMFI as a Mutual Fund Distributor

IGSL have not been debarred / suspended by SEBI for Retail & Institutional business or any other regulatory authority for accessing / dealing in securities Market other than PRO business. IGSL, its associates or analyst or his relatives may or may not hold any financial interest in the subject company. IGSL or its associates or Analyst do not have any conflict or material conflict of interest at the time of publication of the research report with the subject company. IGSL or its Affiliates may or may not have been beneficial ownership of one percent or more of the securities mentioned in this report. However, one or more of IGSL or its Affiliates may, from time to time, have a long or short position in any of the securities mentioned herein and may buy or sell those securities or options thereon, either on their own account.

IGSL or its associates / analyst has not received any compensation / managed or co-managed public offering of securities of the company covered by Analyst during the past twelve months. IGSL or its associates have not received any compensation or other benefits from the company covered by Analyst or third party in connection with the research report. Analyst has not served as an officer, director or employee of Subject Company and IGSL / analyst has not been engaged in market making activity of the subject company.

Analyst Certification: I/We, **Virat Jagad** the research analyst is the author of this report, hereby certify that the views expressed in this research report accurately reflects my/our personal views about the subject securities, issuers, products, sectors or industries. It is also certified that no part of the compensation of the analyst(s) was, is, or will be directly or indirectly related to the inclusion of specific recommendations or views in this research. The analyst(s) principally responsible for the preparation of this research report and has taken reasonable care to achieve and maintain independence and objectivity in making any recommendations.

Research Team	Profile	Email ID
Mr. Prashant Barwaliya	Head- Research	Prashant.b@inventuregrowth.com
Mr. Virat Jagad	Technical Analyst	virat.jagad@inventuregrowth.com
Ms. Jeni Rita	Fundamental Analyst	Jeni.rita@inventuregrowth.com
Ms. Darshita Shah	Fundamental Analyst	Darshita.shah@inventuregrowth.com

Created by:**IGSL - Research**

Inventure Growth & Securities Ltd, 201, Viraj Tower, Near Landmark Building,
Western Express Highway, Andheri (East), Mumbai - 400 093
Tele: 91-22-71148500 , Fax: 91-22-40751511.

E-mail: Research@inventuregrowth.com , website : <http://www.inventuregrowth.com>

DISCLAIMER

Inventure Growth and Securities Limited (hereinafter referred to as "IGSL") is a registered Member of National Stock Exchange of India Limited, Bombay Stock Exchange Limited and Metropolitan Stock Exchange Limited. It is also registered as a Depository Participant with CDSL. It also has registration with AMFI as a Mutual Fund Distributor. Inventure Growth and Securities Limited is a registered entity with SEBI for Research Analyst in terms of SEBI (Research Analyst) Regulations, 2014 vide registration number INH000006129. IGSL has not been debarred/ suspended by SEBI or any other regulatory authority for accessing /dealing in securities Market. IGSL or its associates/ analyst has not received any compensation / managed or co-managed public offering of securities of the company covered by Analyst during the past twelve months.

This document is solely for the personal information of the recipient, and must not be singularly used as the basis of any investment decision. Nothing in this document should be construed as investment or financial advice. Each recipient of this document should make such investigations as they deem necessary to arrive at an independent evaluation of an investment in the securities of the companies referred to in this document (including the merits and risks involved), and should consult their own advisors to determine the merits and risks of such an investment. Reports based on technical and derivative analysis center on studying charts of a stock's price movement, outstanding positions and trading volume, as opposed to focusing on a company's fundamentals and, as such, may not match with a report on a company's fundamentals. Investors are advised to refer the Fundamental and Technical Research Reports available on our website to evaluate the contrary view, if any.

The information in this document has been printed on the basis of publicly available information, internal data and other reliable sources believed to be true, but we do not represent that it is accurate or complete and it should not be relied on as such, as this document is for general guidance only. Inventure Growth and Securities Limited or any of its affiliates/ group companies shall not be in any way responsible for any loss or damage that may arise to any person from any inadvertent error in the information contained in this report. Inventure Growth and Securities Limited has not independently verified all the information contained within this document. Accordingly, we cannot testify, nor make any representation or warranty, express or implied, to the accuracy, contents or data contained within this document. While Inventure Growth and Securities Limited endeavors to update on a reasonable basis the information discussed in this material, there may be regulatory, compliance, or other reasons that prevent us from doing so. This document is being supplied to you solely for your information, and its contents, information or data may not be reproduced, redistributed or passed on, directly or indirectly.

Neither Inventure Growth and Securities Limited , nor its directors, employees or affiliates shall be liable for any loss or damage that may arise from or in connection with the use of this information.