

SENSEX	NIFTY	INDIAVIX	BANKNIFTY	10YR G-SEC	USDINR
40966.86	12055.8	17.3	30761.4	6.58	71.34
-0.46%	-0.52%	0.71%	-0.25%	0.37%	0.14%

Nifty Short Term View

Nifty Close	R1	R2	S1	S2
12055.8	12215	12275	12002	11929

Indian shares failed to hold early gains on Tuesday as corona virus-related worries persisted and caution set in ahead of the Union Budget due later this week, with investors expecting strong measures to revive sagging growth. Nifty index ended the session down 58.75 points, at 12,060.25.

Nifty formed a long body red candle on the daily chart where nifty took breakdown of up trending channel as well as on RSI it breach its support level of 46 which may result in further downside in index.



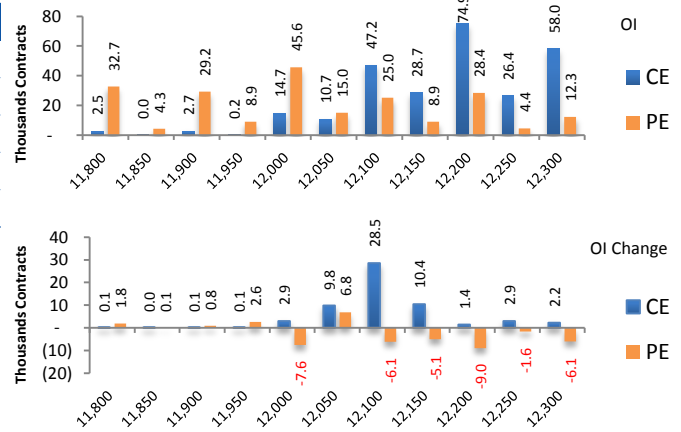
News Buzz

- The growth trajectory for the Indian pharmaceutical industry is likely to remain at 10-13 percent in 2020-21 despite challenges, according to rating agency ICRA. The expected growth in the next financial year is on the back of healthy demand from the domestic market given increasing spend on healthcare along with improving access. **Positive for Pharma Companies**
- The Directorate General of Foreign Trade (DGFT), on January 28, has put Bharti Airtel on its 'Denied Entities List', reported CNBC-TV18. **Negative for Bharti Airtel**
- Realty major DLF Ltd on January 28 said the company has revamped its shopping mall at Saket in the national capital with an investment of over Rs 100 crore and the retail complex will be fully functional by March. The company has done the soft launch of this shopping complex 'DLF Avenue' on Monday, which has a leasable area of 5.2 lakh sq ft. **Positive for DLF**
- Consolidating its position as the single-largest shareholder in the express logistics company Gati Ltd, Mumbai-based Allcargo Logistics has increased its stake in the former to 20.8 per cent by acquiring an additional 7.5 per cent stake today. **Positive for All cargo**
- Gold loan-focused non-banker Manappuram Finance on Tuesday reported a 63 per cent rise in consolidated net profit to Rs 397.84 crore for the December 2019 quarter. On a standalone basis, its net income stood at Rs 332.42 crore, up 57.7 per cent from the year-ago period. **Positive for Manappuram Finance**
- Real estate firm Prestige Group is in talks with 2-3 large investors to raise \$300-400 million, by monetising some of its retail mall and office assets, before it goes a real estate investment trust (REIT) listing in a year or so. **Positive for Prestige Estates Project Ltd**
- Coal stocks at power plants peaked to 34.25 million tonne (mt) on Sunday, after Coal India Limited stepped up production and supplies. **Positive for Coal India**
- **Results on 29th January** - Bajaj Finserv, Bajaj Finance, Birla Corporation, Cholamandalam Financial Holdings, Crompton Greaves Consumer Electricals, Escorts, Godrej Consumer Products, IDFC First Bank, Jubilant FoodWorks, Tata Power, NIIT Technologies, The Ramco Cement

Derivative Activity

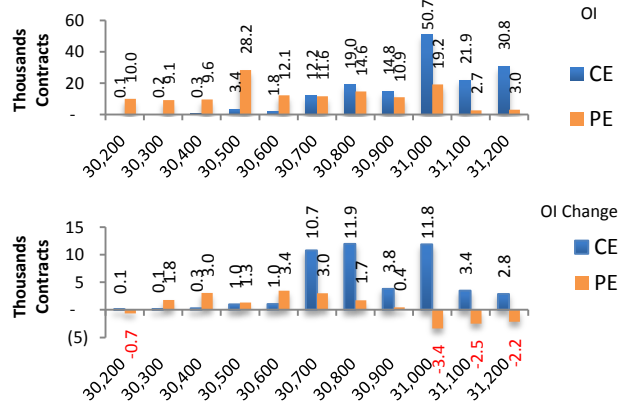
Index	NIFTY	Change
Fut Closing	12068	-0.5%
Prem /Disc	12.20	5.50
OI Qty	1.54 Cr.	3.6%
Nifty PCR	0.81	
Highest OI	12200 CE	12000 PE

- NIFTY future was Down 0.48% with increase in OI by 3.6%.
- Nifty Put OI Reduction was seen at 12200 followed by 12000
- Nifty Call OI addition was seen at 12100 followed by 12150. which can act as short term resistance



Index	BANKNIFTY	Change
Fut Closing	30771.6	-0.3%
Prem/Disc	10.20	-31.45
OI Qty	0.18 Cr.	13.8%
Highest OI	31500 CE	30500 PE

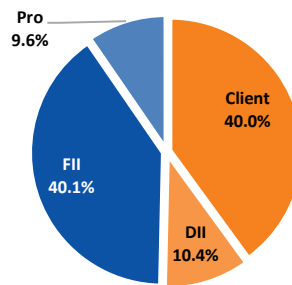
- Nifty Bank future was Down 0.35% with increase in OI by 13.84%.
- Nifty Bank Put OI addition was seen at 30600 followed by 30400 which can act as short term support.
- Nifty Bank Call OI addition was seen at 30800 followed by 31000 which can act as short term resistance.



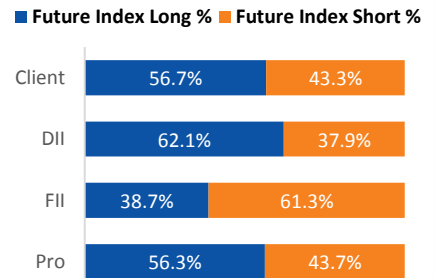
Participant wise OI Activity (Fig in '000 Contracts)

Participant Type	Index Fut Activity	Call Activity	Put Activity
Retail	5.0	54.1	-8.9
DII	-0.4	0.0	-0.2
FII	-7.8	-18.3	11.0
Pro	3.3	-35.9	-1.9

Index Fut OI %



Index Future OI %



- FII added short Index future by 7.8k contracts and Client added long Index future by 5k contracts
- FII added Short calls by 18.3k contracts and added long puts by 11 k contracts
- Client added Long calls by 54.1k contracts and unwounded the long puts by 8.9 k contracts

Open Interest Gainers

Symbol	Trend	Future Price	Price Chng %	Fut OI Chng %
ESCORTS	Bullish	728.75	-0.1%	29.7%
JUBLFOOD	Bullish	1755.4	-3.4%	19.2%
JUSTDIAL	Bearish	591.75	-1.2%	13.0%
NTPC	Bearish	111.8	-0.8%	12.4%
SRTRANSFIN	Bearish	1080.1	0.3%	12.0%

Volume Gainers

Symbol	Trend	Future Price	Price Chng %	3 Day Vol Chng %
MCDOWELL-N	Bullish	658.75	14.1%	155.6%
SUNPHARMA	Bearish	453.6	1.0%	129.7%
WIPRO	Bearish	244.25	-0.5%	128.3%
TCS	Bullish	2185.45	0.5%	124.4%
MARUTI	Bearish	7002.1	-2.0%	124.1%

Stocks Near Highest Call Open Interest

Symbol	Trend	Future Price	Highest Call OI	No of Contracts
JUBLFOOD	Bullish	1755.4	1760	362
CENTURYTEX	Bullish	617.25	620	216
SRF	Bullish	3757.7	3750	168

Open interest Losers

Symbol	Trend	Future Price	Price Chng %	Fut OI Chng %
PFC	Bearish	116.25	0.2%	-12.3%
IDFCFIRSTB	Bearish	43.45	-0.8%	-11.9%
IOC	Bearish	118.05	0.5%	-11.5%
YESBANK	Bearish	37.6	-4.4%	-10.8%
BIOCON	Bullish	288.05	-1.0%	-10.1%

Highest Position Carry forward %

Symbol	Trend	Future Price	Price Chng %	O I Chng / Volume
GMRINFRA	Bullish	23.7	-1.0%	22.2%
ONGC	Bearish	116.25	-0.3%	15.4%
FEDERALBNK	Bullish	95.5	-0.1%	14.6%
ESCORTS	Bullish	728.75	-0.1%	13.5%
NTPC	Bearish	111.8	-0.8%	12.7%

Stocks Near Highest Put Open Interest

Symbol	Trend	Future Price	Highest Put OI	No of Contracts
COLPAL	Bullish	1479.5	1480	52

Nifty 50 Daily Levels

Symbol	Cash Close	Trend	5 Day SMA	10 Day SMA	20 Day SMA	R3	R2	R1	Mid Point	S1	S2	S3
NIFTY50	12,055.80	DOWN	12164.9	12246.2	12209.8	12226.4	12156.8	12109.9	12087.4	12065	12018	11948
NIFTYBANK	30,761.40	DOWN	30946.4	31315.4	31615.5	31153.7	30976.2	30856.6	30799.4	30742	30623	30445
NIFTYIT	16,429.75	UP	16370.1	16350.5	16118.3	16600.4	16505.9	16442.1	16411.7	16381	16317	16223
ADANIPOINTS	372.95	DOWN	383.1	385.4	384.4	385.5	381.3	378.5	377.1	376	373	369
ASIANPAINT	1,779.10	DOWN	1788.3	1811.7	1788.4	1819.2	1801.4	1789.5	1783.7	1778	1766	1748
AXISBANK	737.15	UP	726.2	732.9	736.3	755.2	746.9	741.4	738.7	736	730	722
BAJAJ-AUTO	3,060.90	DOWN	3079.1	3095.4	3094.9	3118.0	3094.8	3079.2	3071.8	3064	3049	3025
BAJFINANCE	4,213.00	UP	4153.1	4177.0	4158.2	4287.7	4238.1	4204.7	4188.7	4173	4139	4090
BAJAJFINSV	9,631.30	UP	9561.5	9586.1	9449.6	9786.0	9690.1	9625.4	9594.5	9564	9499	9403
BPCL	480.95	UP	464.4	463.6	469.6	489.0	481.7	476.7	474.4	472	467	460
BHARTIARTL	491.25	NEUTRAL	517.7	500.8	478.4	519.0	510.9	505.4	502.8	500	495	487
INFRADEL	237.60	DOWN	242.0	238.8	243.0	251.7	245.7	241.7	239.7	238	234	228
BRITANNIA	3,181.25	UP	3139.5	3130.2	3079.0	3246.8	3212.2	3188.9	3177.7	3167	3143	3109
CIPLA	464.70	DOWN	466.7	474.2	473.1	473.6	469.1	466.0	464.6	463	460	456
COALINDIA	189.15	DOWN	194.4	201.7	204.5	196.0	193.6	192.0	191.3	190	189	186
DRREDDY	3,189.15	UP	3076.2	3027.9	2962.5	3241.4	3215.1	3197.4	3189.0	3180	3163	3136
EICHARMOT	21,086.65	UP	21019.7	21040.6	21019.3	21751.2	21420.5	21197.6	21090.9	20984	20761	20431
GAIL	126.15	DOWN	127.7	128.3	126.3	129.6	128.0	127.0	126.5	126	125	123
GRASIM	808.90	UP	801.7	783.2	766.8	832.6	821.8	814.5	811.0	808	800	789
HCLTECH	601.45	UP	597.1	595.7	587.7	611.6	607.2	604.3	602.9	602	599	594
HDFCBANK	1,223.20	DOWN	1237.6	1258.2	1264.4	1240.5	1229.3	1221.8	1218.2	1215	1207	1196
HEROMOTOCO	2,468.85	UP	2430.4	2434.4	2410.0	2519.5	2490.9	2471.5	2462.3	2453	2434	2405
HINDALCO	196.00	DOWN	203.4	207.0	209.8	201.5	199.3	197.8	197.1	196	195	193
HINDUNILVR	2,060.60	UP	2059.8	2050.2	1993.8	2095.5	2078.2	2066.5	2061.0	2055	2044	2026
HDFC	2,431.60	NEUTRAL	2431.4	2452.8	2443.9	2455.9	2434.8	2420.5	2413.7	2407	2393	2372
ICICIBANK	528.20	DOWN	530.5	533.0	534.2	545.6	539.1	534.8	532.7	531	526	520
ITC	230.75	DOWN	237.4	239.5	238.4	236.8	234.7	233.3	232.7	232	231	229
IOC	117.90	NEUTRAL	116.8	120.1	122.7	120.4	119.0	118.1	117.7	117	116	115
INDUSINDBK	1,254.75	DOWN	1316.6	1353.6	1425.8	1308.1	1285.5	1270.3	1263.0	1256	1240	1218
INFY	778.00	UP	775.6	772.4	754.9	802.2	790.1	782.0	778.1	774	766	754
JSWSTEEL	255.25	DOWN	266.9	272.0	271.7	266.5	262.8	260.2	259.0	258	255	252
KOTAKBANK	1,626.05	NEUTRAL	1615.6	1644.8	1657.7	1653.5	1637.8	1627.3	1622.2	1617	1607	1591
LT	1,346.65	UP	1327.3	1321.9	1320.6	1376.9	1362.2	1352.4	1347.6	1343	1333	1318
M&M	572.50	UP	563.8	565.5	550.7	589.3	582.3	577.6	575.4	573	568	562
MARUTI	6,997.05	DOWN	7172.5	7316.5	7274.6	7244.1	7158.4	7100.6	7072.9	7045	6987	6902
NTPC	112.05	DOWN	114.1	117.9	119.1	114.3	113.5	112.9	112.6	112	112	111
NESTLEIND	15,416.65	NEUTRAL	15560.0	15374.0	14985.7	15816.8	15678.8	15585.8	15541.4	15497	15404	15266
ONGC	116.60	DOWN	118.5	121.5	123.8	119.6	118.2	117.4	116.9	116	116	114
POWERGRID	190.45	DOWN	198.5	198.1	195.5	195.0	193.3	192.2	191.7	191	190	188
RELIANCE	1,471.75	DOWN	1524.4	1532.7	1530.1	1518.3	1503.7	1493.9	1489.2	1484	1475	1460
SBIN	315.10	DOWN	318.7	320.1	324.6	326.1	320.9	317.3	315.7	314	310	305
SUNPHARMA	452.90	UP	448.0	448.8	444.4	458.9	454.8	452.0	450.7	449	447	442
TCS	2,183.75	DOWN	2184.3	2198.4	2197.6	2217.5	2197.0	2183.1	2176.5	2170	2156	2136
TATAMOTORS	176.10	DOWN	186.8	192.0	190.6	187.4	183.3	180.5	179.2	178	175	171
TATASTEEL	446.25	DOWN	475.5	485.8	482.8	468.0	461.2	456.6	454.4	452	448	441
TECHM	794.25	UP	781.1	783.6	777.7	804.8	798.8	794.8	792.9	791	787	781
TITAN	1,195.00	NEUTRAL	1199.9	1192.1	1174.9	1234.4	1219.4	1209.3	1204.4	1200	1189	1174
UPL	536.95	DOWN	552.7	569.5	581.6	547.5	542.3	538.8	537.1	535	532	527
ULTRACEMCO	4,609.05	UP	4561.3	4522.3	4390.9	4753.3	4698.1	4660.8	4643.0	4625	4588	4533
VEDL	142.20	DOWN	153.2	157.4	157.1	150.1	147.8	146.3	145.5	145	143	141
WIPRO	244.05	DOWN	246.9	249.0	250.2	248.1	246.4	245.3	244.7	244	243	241
YESBANK	41.65	NEUTRAL	40.6	39.9	42.9	45.8	43.9	42.6	42.0	41	40	38
ZEEL	272.50	DOWN	284.7	279.8	276.8	291.6	283.6	278.3	275.7	273	268	260

Research Team Tel: 022 – 71148579

E-mail: research@inventuregrowth.comWebsite: [Inventuregrowth.com](http://www.inventuregrowth.com)

This Report is published by Inventure Growth & Securities Limited (hereinafter referred to as “IGSL”) for private circulation. IGSL is a registered Research Analyst under SEBI (Research Analyst) Regulations, 2014 having Registration no. INH000006129. IGSL is also a registered Stock Broker with National Stock Exchange of India Limited, BSE Limited and Metropolitan Stock Exchange of India Limited (MSE) in cash, F&O & currency derivatives segments. It is also registered as a Depository Participant with CDSL and is also registered with AMFI as a Mutual Fund Distributor

IGSL have not been debarred / suspended by SEBI for Retail & Institutional business or any other regulatory authority for accessing / dealing in securities Market other than PRO business. IGSL, its associates or analyst or his relatives may or may not hold any financial interest in the subject company. IGSL or its associates or Analyst do not have any conflict or material conflict of interest at the time of publication of the research report with the subject company. IGSL or its Affiliates may or may not have been beneficial ownership of one percent or more of the securities mentioned in this report. However, one or more of IGSL or its Affiliates may, from time to time, have a long or short position in any of the securities mentioned herein and may buy or sell those securities or options thereon, either on their own account.

IGSL or its associates / analyst has not received any compensation / managed or co-managed public offering of securities of the company covered by Analyst during the past twelve months. IGSL or its associates have not received any compensation or other benefits from the company covered by Analyst or third party in connection with the research report. Analyst has not served as an officer, director or employee of Subject Company and IGSL / analyst has not been engaged in market making activity of the subject company.

Analyst Certification: I/We, **Virat Jagad** the research analyst is the author of this report, hereby certify that the views expressed in this research report accurately reflects my/our personal views about the subject securities, issuers, products, sectors or industries. It is also certified that no part of the compensation of the analyst(s) was, is, or will be directly or indirectly related to the inclusion of specific recommendations or views in this research. The analyst(s) principally responsible for the preparation of this research report and has taken reasonable care to achieve and maintain independence and objectivity in making any recommendations.

Research Team	Profile	Email ID
Mr. Prashant Barwaliya	Head- Research	Prashant.b@inventuregrowth.com
Mr. Virat Jagad	Technical Analyst	virat.jagad@inventuregrowth.com
Ms. Jeni Rita	Fundamental Analyst	Jeni.rita@inventuregrowth.com
Ms. Darshita Shah	Fundamental Analyst	Darshita.shah@inventuregrowth.com

Created by:**IGSL - Research**

Inventure Growth & Securities Ltd, 201, Viraj Tower, Near Landmark Building,

Western Express Highway, Andheri (East), Mumbai -400 093

Tele: 91-22-71148500 , Fax: 91-22-40751511.

E-mail: Research@inventuregrowth.com , website : <http://www.inventuregrowth.com>**DISCLAIMER**

Inventure Growth and Securities Limited (hereinafter referred to as “IGSL”) is a registered Member of National Stock Exchange of India Limited, Bombay Stock Exchange Limited and Metropolitan Stock Exchange Limited. It is also registered as a Depository Participant with CDSL. It also has registration with AMFI as a Mutual Fund Distributor. Inventure Growth and Securities Limited is a registered entity with SEBI for Research Analyst in terms of SEBI (Research Analyst) Regulations, 2014 vide registration number INH000006129. IGSL has not been debarred/ suspended by SEBI or any other regulatory authority for accessing /dealing in securities Market. IGSL or its associates/ analyst has not received any compensation / managed or co-managed public offering of securities of the company covered by Analyst during the past twelve months.

This document is solely for the personal information of the recipient, and must not be singularly used as the basis of any investment decision. Nothing in this document should be construed as investment or financial advice. Each recipient of this document should make such investigations as they deem necessary to arrive at an independent evaluation of an investment in the securities of the companies referred to in this document (including the merits and risks involved), and should consult their own advisors to determine the merits and risks of such an investment. Reports based on technical and derivative analysis center on studying charts of a stock's price movement, outstanding positions and trading volume, as opposed to focusing on a company's fundamentals and, as such, may not match with a report on a company's fundamentals. Investors are advised to refer the Fundamental and Technical Research Reports available on our website to evaluate the contrary view, if any.

The information in this document has been printed on the basis of publicly available information, internal data and other reliable sources believed to be true, but we do not represent that it is accurate or complete and it should not be relied on as such, as this document is for general guidance only. Inventure Growth and Securities Limited or any of its affiliates/ group companies shall not be in any way responsible for any loss or damage that may arise to any person from any inadvertent error in the information contained in this report. Inventure Growth and Securities Limited has not independently verified all the information contained within this document. Accordingly, we cannot testify, nor make any representation or warranty, express or implied, to the accuracy, contents or data contained within this document. While Inventure Growth and Securities Limited endeavors to update on a reasonable basis the information discussed in this material, there may be regulatory, compliance, or other reasons that prevent us from doing so. This document is being supplied to you solely for your information, and its contents, information or data may not be reproduced, redistributed or passed on, directly or indirectly.

Neither Inventure Growth and Securities Limited , nor its directors, employees or affiliates shall be liable for any loss or damage that may arise from or in connection with the use of this information.