

SENSEX	NIFTY	INDIAVIX	BANKNIFTY	10YR G-SEC	USDINR
41945.37	12352.35	14.13	31590.65	6.62	71.08
0.03%	-0.03%	-0.39%	-0.83%	0.30%	-0.20%

Nifty Short Term View

Nifty Close	R1	R2	S1	S2
12352.35	12432	12478	12289	12194

Indian shares ended a lackluster session on a mixed note Friday as investors awaited cues from the earnings season and the upcoming Union Budget. Nifty index dropped 3.15 points, to 12,352.35.

Nifty formed Inverted hammer pattern on a daily chart where nifty unable to cross 12400 level which result in another confusing day in Indian market. Positive movement can be seen only if nifty sustain above 12432 level.



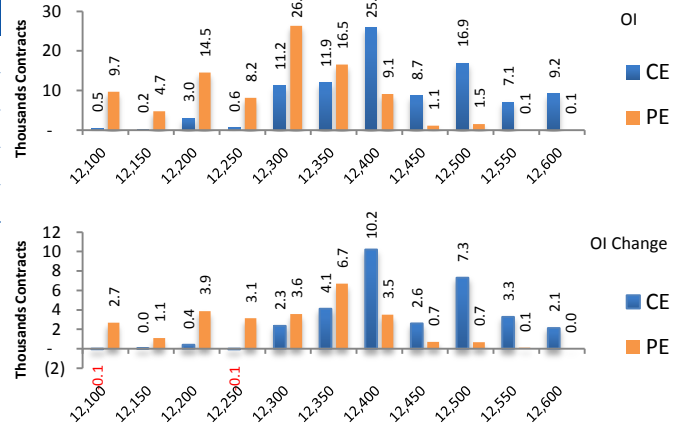
News Buzz

- Reliance Industries posted a revenue of Rs. 156,802 crore for Q3FY2020, which declined by 2.5% and highest ever quarterly net profit of Rs. 11,640 crore, which rose by 13.5%, both on YoY basis. The Gross Refining Margins declined from \$9.4, per barrel last quarter, to \$9.2 per barrel in Q3FY2020. The net profit and revenue of Jio Infocom grew by 62% and 28%, respectively with the ARPU growing by 7% to Rs. 128.4 per month for the quarter. **Positive for Reliance**
- HDFC Bank Ltd. Reported a 32% increase in net profit to Rs. 7,416.8 crore for Q3FY2020 on account of higher net income and other income. The net interest income grew by 12.6% to Rs. 14,172.9 crore and other income including core fee income grew by 35% to Rs. 6,669.2 crore. The asset quality of the bank deteriorated slightly as Gross NPA were at 1.42% and Net NPAs at 0.48%. **Positive for HDFC Bank Ltd**
- HCL Technologies Ltd. posted revenue growth of 2.1% q-o-q and 16.4% y-o-y in constant currency terms for Q3FY2020, and delivered a strong 20.2% earnings before interest and taxes. The company beat analyst estimates by posting a 14% sequential and 16% annual growth in net profit to Rs. 3,037 crore. **Positive for HCL Technologies**
- Tata Consultancy Services (TCS) posted revenue growth of 6.7% YoY increase to Rs. 39,854 crore for Q3FY2020 and a 6.8% growth in revenue in constant currency terms with operating margins at 25.6% and net margins at 20% for the quarter. The net profit grew by 0.2% on YoY basis to Rs. 8,118 crore and was in line with analyst estimates. **Neutral for TCS**
- Drug firm Lupin on Saturday said it has received five observations from the US health regulator after inspection of its Vizag facility in Andhra Pradesh. **Negative for Lupin**
- Piramal Enterprises Ltd will use the proceeds from the sale of its healthcare insights and analytics business to expand its financial services vertical, seeking to take advantage of opportunities created by the liquidity crisis in the non-banking financial company (NBFC) space, said Piramal Enterprises chairman Ajay Piramal. **Positive for Piramal Enterprises**
- **Results on 20th January** - Federal Bank, Kotak Mahindra Bank, Hindustan Zinc, Can Fin Homes, Just Dial, KEI Industries, ICI Securities, Bank of Maharashtra.

Derivative Activity

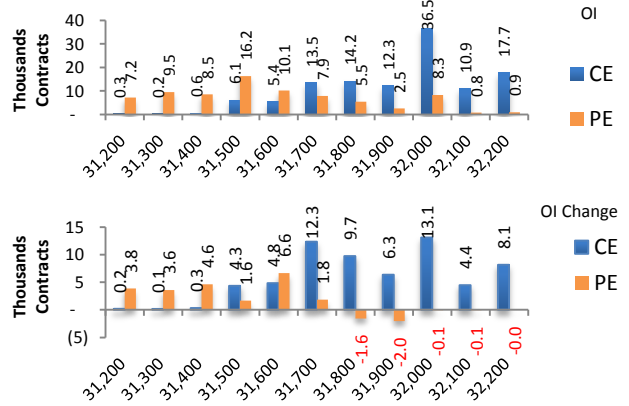
Index	NIFTY	Change
Fut Closing	12384.65	0.1%
Prem /Disc	32.30	13.45
OI Qty	1.51 Cr.	4.0%
Nifty PCR	1.23	
Highest OI	12500 CE	12000 PE

- NIFTY future was up 0.08% with increase in OI by 3.98%.
- Nifty Put OI addition was seen at 12350 followed by 12200 which can act as short term support
- Nifty Call OI addition was seen at 12400 followed by 12500. which can act as short term resistance



Index	BANKNIFTY	Change
Fut Closing	31723.75	-0.7%
Prem/Disc	133.10	51.30
OI Qty	0.13 Cr.	-1.9%
Highest OI	32000 CE	31000 PE

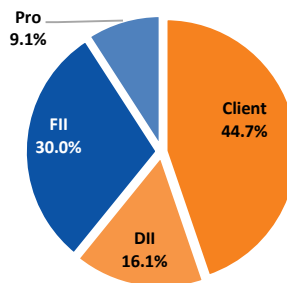
- Nifty Bank future was Down 0.66% with decrease in OI by 1.95%.
- Nifty Bank Put OI addition was seen at 31600 followed by 31400 which can act as short term support.
- Nifty Bank Call OI addition was seen at 32000 followed by 31700 which can act as short term resistance.



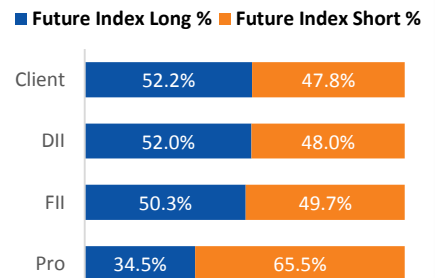
Participant wise OI Activity (Fig in '000 Contracts)

Participant Type	Index Fut Activity	Call Activity	Put Activity
Retail	-2.2	27.0	-24.3
DII	-0.1	0.0	0.0
FII	2.9	-5.4	14.2
Pro	-0.7	-21.6	10.0

Index Fut OI %



Index Future OI %



- FII covered the short Index future by 2.9k contracts and Client added short Index future by 2.2k contracts
- FII added Short calls by 5.4k contracts and added long puts by 14.2 k contracts
- Client added Long calls by 27k contracts and added short puts by 24.3 k contracts

Open Interest Gainers

Symbol	Trend	Future Price	Price Chng %	Fut OI Chng %
IOC	Bearish	122.45	-1.3%	17.2%
MFSL	Bullish	525.45	-1.1%	16.7%
BALKRISIND	Bullish	1105.1	0.5%	15.4%
CADILAHC	Bearish	269.75	-0.7%	14.6%
IDEA	Bearish	4.55	-24.8%	12.6%

Volume Gainers

Symbol	Trend	Future Price	Price Chng %	3 Day Vol Chng %
IDEA	Bearish	4.55	-24.8%	158.9%
INFRATEL	Bearish	219	-9.4%	154.7%
BHARTIARTL	Bullish	498.6	5.4%	123.5%
DRREDDY	Bullish	3045.85	3.2%	105.5%
ADANIENT	Bullish	229	3.7%	105.1%

Stocks Near Highest Call Open Interest

Symbol	Trend	Future Price	Highest Call OI	No of Contracts
KOTAKBANK	Bullish	1705.9	1700	1771
TATASTEEL	Bullish	496.95	500	1253
HCLTECH	Bullish	600.6	600	890

Open interest Losers

Symbol	Trend	Future Price	Price Chng %	Fut OI Chng %
BEL	Bullish	108.8	2.6%	-8.9%
TATACHEM	Bullish	748.5	1.2%	-8.7%
NMDC	Bullish	130.05	-0.4%	-7.3%
EICHERMOT	Bearish	21334.45	-1.1%	-7.1%
JUBLFOOD	Bullish	1752.05	0.2%	-6.5%

Highest Position Carry forward %

Symbol	Trend	Future Price	Price Chng %	O I Chng / Volume
IOC	Bearish	122.45	-1.3%	48.4%
LT	Bearish	1309.2	-1.2%	27.0%
COALINDIA	Bullish	208.3	-0.9%	26.5%
ITC	Bearish	240.4	-0.4%	23.5%
GMRINFRA	Bullish	23.6	-1.7%	21.2%

Stocks Near Highest Put Open Interest

Symbol	Trend	Future Price	Highest Put OI	No of Contracts
BOSCHLTD		15463.15	15500	5

Nifty 50 Daily Levels

Symbol	Cash Close	Trend	5 Day SMA	10 Day SMA	20 Day SMA	R3	R2	R1	Mid Point	S1	S2	S3
NIFTY50	12,352.35	UP	12329.5	12216.1	12221.6	12496.7	12425.2	12377.0	12353.9	12330.9	12282.7	12211.2
NIFTYBANK	31,590.65	DOWN	32005.1	31819.7	32045.9	32088.8	31905.3	31781.5	31722.3	31663.1	31539.3	31355.7
NIFTYIT	16,356.60	UP	16255.3	16086.7	15925.7	16558.3	16463.5	16399.7	16369.1	16338.6	16274.7	16180.0
ADANIPOINTS	387.60	NEUTRAL	390.7	387.8	378.8	397.8	393.5	390.7	389.3	387.9	385.0	380.7
ASIANPAINT	1,830.05	UP	1818.8	1777.8	1789.2	1868.9	1850.7	1838.5	1832.6	1826.7	1814.5	1796.3
AXISBANK	739.90	NEUTRAL	741.8	736.8	742.2	755.8	747.2	741.4	738.6	735.8	730.0	721.4
BAJAJ-AUTO	3,118.10	NEUTRAL	3106.5	3082.5	3143.7	3166.7	3140.9	3123.4	3115.1	3106.8	3089.3	3063.5
BAJFINANCE	4,231.75	UP	4186.0	4130.2	4161.2	4326.1	4276.0	4242.2	4226.0	4209.8	4176.0	4125.9
BAJAJFINSV	9,715.00	UP	9518.7	9361.9	9363.9	9865.2	9766.7	9700.3	9668.6	9636.8	9570.4	9472.0
BPCL	453.90	DOWN	468.8	468.8	478.4	473.2	465.5	460.3	457.9	455.4	450.2	442.5
BHARTIARTL	500.05	UP	467.4	460.6	457.4	502.4	494.7	489.5	487.0	484.5	479.3	471.5
INFRADEL	218.25	DOWN	246.8	245.0	249.6	241.9	236.3	232.5	230.7	228.8	225.0	219.4
BRITANNIA	3,124.45	UP	3080.9	3052.7	3060.9	3206.5	3171.8	3148.5	3137.4	3126.2	3102.9	3068.2
CIPLA	480.30	UP	479.9	474.0	474.1	489.6	484.9	481.8	480.3	478.8	475.6	470.9
COALINDIA	207.90	NEUTRAL	210.5	207.4	205.4	214.0	211.5	209.9	209.1	208.3	206.6	204.1
DRREDDY	3,034.35	UP	2938.3	2915.6	2898.2	3031.1	3008.5	2993.2	2985.9	2978.6	2963.3	2940.7
EICHERMOT	21,292.20	NEUTRAL	20672.7	20643.8	21418.8	22107.2	21760.1	21526.2	21414.2	21302.3	21068.3	20721.3
GAIL	126.35	NEUTRAL	128.9	126.7	123.3	130.8	129.2	128.1	127.6	127.0	125.9	124.3
GRASIM	768.25	UP	759.6	753.4	748.5	782.2	772.2	765.4	762.2	758.9	752.1	742.1
HCLTECH	598.80	UP	590.0	586.8	577.5	604.7	600.4	597.4	596.0	594.6	591.7	587.3
HDFCBANK	1,278.15	NEUTRAL	1286.0	1272.9	1278.5	1306.0	1294.4	1286.6	1282.9	1279.2	1271.4	1259.8
HEROMOTOCO	2,454.00	UP	2410.5	2387.3	2407.4	2505.1	2474.6	2454.1	2444.3	2434.4	2413.9	2383.4
HINDALCO	210.05	DOWN	211.6	211.1	213.6	214.5	212.2	210.6	209.9	209.1	207.5	205.2
HINDUNILVR	2,060.30	UP	2005.7	1965.7	1953.9	2089.4	2072.0	2060.4	2054.8	2049.2	2037.5	2020.2
HDFC	2,453.95	NEUTRAL	2476.6	2450.0	2438.1	2511.1	2489.5	2475.0	2468.0	2461.1	2446.5	2425.0
ICICIBANK	532.05	DOWN	537.8	534.9	538.3	547.7	541.1	536.7	534.6	532.5	528.1	521.5
ITC	239.95	NEUTRAL	240.7	238.3	238.7	244.6	242.4	241.0	240.4	239.7	238.3	236.1
IOC	122.65	DOWN	125.8	125.2	125.9	126.2	124.8	123.8	123.4	123.0	122.0	120.6
INDUSINDBK	1,352.25	DOWN	1459.9	1472.6	1490.8	1418.4	1393.8	1377.3	1369.4	1361.4	1344.9	1320.3
INFY	767.85	UP	764.4	748.0	740.7	791.3	779.3	771.3	767.4	763.6	755.5	743.6
JSWSTEEL	273.35	NEUTRAL	279.5	274.0	271.2	283.5	279.4	276.7	275.4	274.1	271.4	267.3
KOTAKBANK	1,698.10	UP	1686.0	1673.0	1683.5	1730.5	1715.1	1704.8	1699.8	1694.9	1684.5	1669.2
LT	1,304.20	DOWN	1325.7	1320.8	1313.9	1340.1	1325.9	1316.3	1311.8	1307.2	1297.6	1283.4
M&M	569.30	UP	560.3	545.1	538.7	582.2	575.3	570.6	568.4	566.1	561.5	554.5
MARUTI	7,520.15	UP	7403.1	7264.9	7292.6	7682.6	7586.9	7522.3	7491.4	7460.5	7395.9	7300.2
NTPC	121.20	NEUTRAL	122.2	120.9	119.0	123.0	122.2	121.6	121.3	121.0	120.5	119.6
NESTLEIND	15,439.45	UP	14885.6	14676.4	14671.7	15670.1	15533.4	15441.3	15397.2	15353.1	15260.9	15124.2
ONGC	125.40	NEUTRAL	124.8	125.1	126.1	127.7	126.3	125.4	125.0	124.5	123.6	122.2
POWERGRID	197.40	UP	194.6	193.4	191.2	200.0	198.4	197.4	196.9	196.4	195.4	193.9
RELIANCE	1,581.00	UP	1536.5	1530.7	1539.7	1589.3	1574.3	1564.3	1559.5	1554.6	1544.6	1529.6
SBIN	318.00	DOWN	327.7	326.0	329.9	331.5	326.1	322.4	320.7	318.9	315.2	309.8
SUNPHARMA	454.60	UP	446.5	444.3	437.3	460.3	456.0	453.2	451.8	450.5	447.6	443.4
TCS	2,219.10	UP	2215.3	2215.3	2206.1	2270.5	2249.7	2235.7	2229.0	2222.2	2208.2	2187.4
TATAMOTORS	197.30	UP	197.3	192.2	186.3	206.9	202.2	199.0	197.4	195.9	192.7	188.0
TATASTEEL	495.25	NEUTRAL	495.4	486.9	476.9	509.7	502.3	497.2	494.8	492.4	487.4	479.9
TECHM	778.45	NEUTRAL	787.3	780.2	777.0	792.5	786.6	782.6	780.7	778.7	774.7	768.8
TITAN	1,188.75	UP	1171.6	1162.3	1173.7	1220.9	1205.8	1195.7	1190.8	1186.0	1175.8	1160.7
UPL	589.25	NEUTRAL	589.9	592.6	586.0	600.2	594.4	590.5	588.7	586.8	582.9	577.1
ULTRACEMCO	4,486.75	UP	4475.1	4370.1	4228.2	4586.6	4533.0	4496.8	4479.6	4462.3	4426.1	4372.5
VEDL	159.50	NEUTRAL	162.5	159.2	155.2	165.9	163.4	161.7	160.9	160.1	158.4	155.9
WIPRO	251.10	DOWN	252.5	252.9	251.3	254.5	252.6	251.4	250.8	250.2	248.9	247.1
YESBANK	39.25	DOWN	41.0	43.6	46.1	43.2	41.4	40.2	39.6	39.0	37.8	36.0
ZEEL	281.70	UP	270.0	269.0	280.8	296.3	288.5	283.2	280.7	278.2	272.9	265.1

Research Team Tel: 022 – 71148579

E-mail: research@inventuregrowth.comWebsite: [Inventuregrowth.com](http://www.inventuregrowth.com)

This Report is published by Inventure Growth & Securities Limited (hereinafter referred to as “IGSL”) for private circulation. IGSL is a registered Research Analyst under SEBI (Research Analyst) Regulations, 2014 having Registration no. INH000006129. IGSL is also a registered Stock Broker with National Stock Exchange of India Limited, BSE Limited and Metropolitan Stock Exchange of India Limited (MSE) in cash, F&O & currency derivatives segments. It is also registered as a Depository Participant with CDSL and is also registered with AMFI as a Mutual Fund Distributor

IGSL have not been debarred / suspended by SEBI for Retail & Institutional business or any other regulatory authority for accessing / dealing in securities Market other than PRO business. IGSL, its associates or analyst or his relatives may or may not hold any financial interest in the subject company. IGSL or its associates or Analyst do not have any conflict or material conflict of interest at the time of publication of the research report with the subject company. IGSL or its Affiliates may or may not have been beneficial ownership of one percent or more of the securities mentioned in this report. However, one or more of IGSL or its Affiliates may, from time to time, have a long or short position in any of the securities mentioned herein and may buy or sell those securities or options thereon, either on their own account.

IGSL or its associates / analyst has not received any compensation / managed or co-managed public offering of securities of the company covered by Analyst during the past twelve months. IGSL or its associates have not received any compensation or other benefits from the company covered by Analyst or third party in connection with the research report. Analyst has not served as an officer, director or employee of Subject Company and IGSL / analyst has not been engaged in market making activity of the subject company.

Analyst Certification: I/We, **Virat Jagad** the research analyst is the author of this report, hereby certify that the views expressed in this research report accurately reflects my/our personal views about the subject securities, issuers, products, sectors or industries. It is also certified that no part of the compensation of the analyst(s) was, is, or will be directly or indirectly related to the inclusion of specific recommendations or views in this research. The analyst(s) principally responsible for the preparation of this research report and has taken reasonable care to achieve and maintain independence and objectivity in making any recommendations.

Research Team	Profile	Email ID
Mr. Prashant Barwaliya	Head- Research	Prashant.b@inventuregrowth.com
Mr. Virat Jagad	Technical Analyst	virat.jagad@inventuregrowth.com
Ms. Jeni Rita	Fundamental Analyst	Jeni.rita@inventuregrowth.com
Ms. Darshita Shah	Fundamental Analyst	Darshita.shah@inventuregrowth.com

Created by: **IGSL - Research**
Inventure Growth & Securities Ltd, 201, Viraj Tower, Near Landmark Building,
Western Express Highway, Andheri (East), Mumbai - 400 093
Tele: 91-22-71148500 , Fax: 91-22-40751511.
E-mail: Research@inventuregrowth.com , website : <http://www.inventuregrowth.com>

DISCLAIMER

Inventure Growth and Securities Limited (hereinafter referred to as “IGSL”) is a registered Member of National Stock Exchange of India Limited, Bombay Stock Exchange Limited and Metropolitan Stock Exchange Limited. It is also registered as a Depository Participant with CDSL. It also has registration with AMFI as a Mutual Fund Distributor. Inventure Growth and Securities Limited is a registered entity with SEBI for Research Analyst in terms of SEBI (Research Analyst) Regulations, 2014 vide registration number INH000006129. IGSL has not been debarred/ suspended by SEBI or any other regulatory authority for accessing /dealing in securities Market. IGSL or its associates/ analyst has not received any compensation / managed or co-managed public offering of securities of the company covered by Analyst during the past twelve months.

This document is solely for the personal information of the recipient, and must not be singularly used as the basis of any investment decision. Nothing in this document should be construed as investment or financial advice. Each recipient of this document should make such investigations as they deem necessary to arrive at an independent evaluation of an investment in the securities of the companies referred to in this document (including the merits and risks involved), and should consult their own advisors to determine the merits and risks of such an investment. Reports based on technical and derivative analysis center on studying charts of a stock's price movement, outstanding positions and trading volume, as opposed to focusing on a company's fundamentals and, as such, may not match with a report on a company's fundamentals. Investors are advised to refer the Fundamental and Technical Research Reports available on our website to evaluate the contrary view, if any.

The information in this document has been printed on the basis of publicly available information, internal data and other reliable sources believed to be true, but we do not represent that it is accurate or complete and it should not be relied on as such, as this document is for general guidance only. Inventure Growth and Securities Limited or any of its affiliates/ group companies shall not be in any way responsible for any loss or damage that may arise to any person from any inadvertent error in the information contained in this report. Inventure Growth and Securities Limited has not independently verified all the information contained within this document. Accordingly, we cannot testify, nor make any representation or warranty, express or implied, to the accuracy, contents or data contained within this document. While Inventure Growth and Securities Limited endeavors to update on a reasonable basis the information discussed in this material, there may be regulatory, compliance, or other reasons that prevent us from doing so. This document is being supplied to you solely for your information, and its contents, information or data may not be reproduced, redistributed or passed on, directly or indirectly.

Neither Inventure Growth and Securities Limited , nor its directors, employees or affiliates shall be liable for any loss or damage that may arise from or in connection with the use of this information.