

SENSEX	NIFTY	INDIAVIX	BANKNIFTY	10YR G-SEC	USDINR
41464.61	12226.65	12.7	32069.25	6.52	71.8
-0.39%	-0.45%	10.49%	-1.15%	0.19%	-0.59%

Nifty Short Term View

Nifty Close	R1	R2	S1	S2
12226.65	12299	12367	12155	12072

Indian shares fell on Friday and the rupee was down 34 paise to the U.S. dollar in the afternoon as rising tensions in the Middle East dented investors' appetite for riskier assets. Nifty index fell 55.55 points to 12,226.65.

Nifty formed small body red candle on a daily chart. Index is stuck in a narrow range where it is moving between 12300 – 12100. Its RSI is also moving in side ways and took support near 55 level. If nifty drop below that level then we may see weakness in the market.



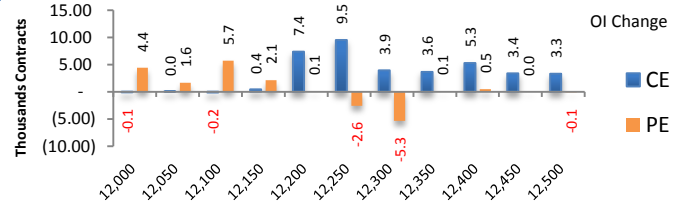
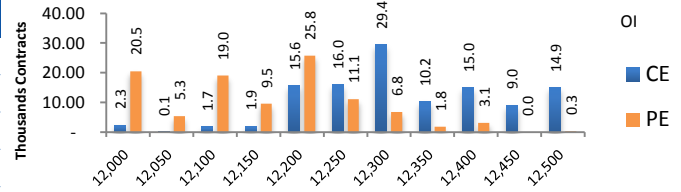
News Buzz

- Ousted Tata Sons Ltd chairman Cyrus Mistry on Sunday said he will not seek to return to the post despite his victory in an appeals court, likely ending protracted uncertainty over the conglomerate's leadership trajectory. **Positive for Tata Group Companies**
- Shareholders of Bharti Airtel have approved proposals to raise up to \$2 billion in equity and another \$1 billion in debt. **Positive for Bharti Airtel**
- Vedanta Ltd on Sunday said it proposes to raise up to Rs 2,000 crore via issuance of non-convertible debentures (NCDs). **Positive for Vedanta Ltd.**
- Kishore Biyani's Future Retail Ltd said that its board has approved a fundraising plan to raise up to \$500 million through dollar denominated bonds, the company said in a filing with stock exchanges. **Negative for Future Retail**
- Budget airline IndiGo on Friday announced that over the next two months it will start daily flights on six new routes which come under the Centre's regional connectivity scheme UDAN. **Positive for Interglobe Aviation**
- Adani Ports and Special Economic Zone Ltd (APSEZ), India's largest private sector port operator, has agreed to buy a 75% stake in Krishnapatnam Port Co. Ltd (KPCL) at an enterprise value of Rs. 13,500 crore. **Positive for Adani Ports**
- The Centre has deallocated a coal block in Odisha allotted to a wholly-owned arm of Power Finance Corporation (PFC) for a 4000 MW power project on account of delays in the development of the mine. **Negative for PFC**
- Public sector Indian Overseas Bank has received capital infusion of Rs 4,360 crore from the government of India, the bank said on Saturday. **Positive for Indian Overseas Bank**
- UCO Bank on Saturday said it has recovered Rs 800-900 crore from four large stressed accounts in the December quarter, a top official of the state-owned lender said. **Positive for UCO Bank**
- HDFC to raise up to Rs 5,000 crore Via 5-Year bonds on January 7 at 7.5 percent. **Positive for HDFC**

Derivative Activity

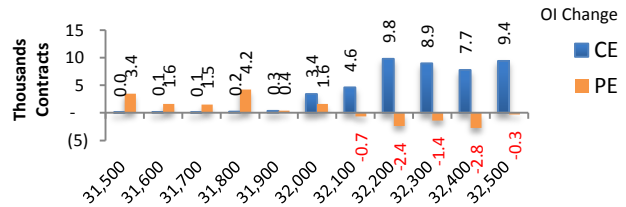
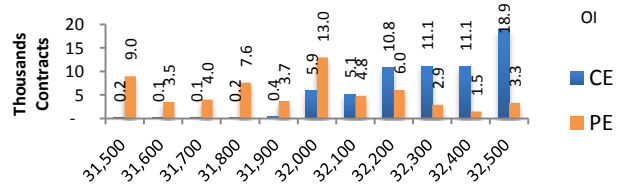
Index	NIFTY	Change
Fut Closing	12256.45	-0.7%
Prem /Disc	29.80	-27.30
OI Qty	1.3 cr.	-0.6%
Nifty PCR	1.13	
Highest OI	12500 CE	12000 PE

- Friday NIFTY future was down 0.67% with decrease in OI by 0.6%.
- Nifty Put OI addition was seen at 12100 followed by 12000 which can act as short term support.
- Nifty Call OI addition was seen at 12250 followed by 12200. which can act as short term resistance.



Index	BANKNIFTY	Change
Fut Closing	32161.2	-1.3%
Prem/Disc	91.95	-43.35
OI Qty	0.13 cr.	-3.7%
Highest OI	32500 CE	32000 PE

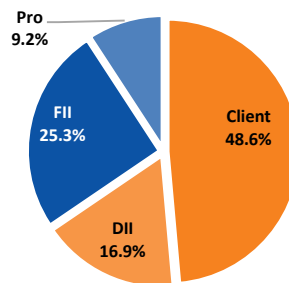
- Friday BANKNIFTY future was down 1.28% with decrease in OI by 3.7%.
- Nifty Bank Put OI addition was seen at 31800 followed by 31500 which can act as short term support.
- Nifty Bank Call OI addition was seen at 32200 followed by 32500 which can act as short term resistance.



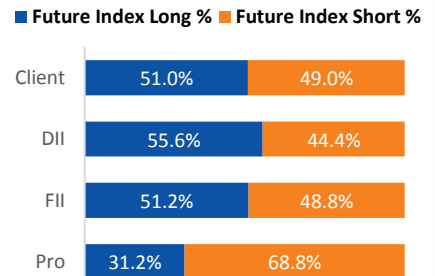
Participant wise OI Activity (Fig in '000 Contracts)

Participant Type	Index Fut Activity	Call Activity	Put Activity
Retail	9.9	39.5	-36.5
DII	-0.0	0.0	0.0
FII	-8.5	-15.2	28.0
Pro	-1.4	-24.3	8.5

Index Fut OI %



Index Future OI %



- FII added short Index future by 8.5k contracts and Client covered the short Index future by 9.9k contracts
- FII added Short calls by 15.2k contracts and added long puts by 28 k contracts
- Client added Long calls by 39.5k contracts and added short puts by 36.5 k contracts

Open Interest Gainers

Symbol	Trend	Future Price	Price Chng %	Fut OI Chng %
PVR	Bullish	1882.2	0.0%	22.4%
BEL	Bearish	101.6	-2.0%	18.5%
SUNTV	Bearish	431.8	-1.2%	17.3%
MFSL	Bullish	567.35	1.9%	13.3%
ONGC	Bearish	128.5	0.3%	12.4%

Volume Gainers

Symbol	Trend	Future Price	Price Chng %	3 Day Vol Chng %
GMRINFRA	Bullish	22.8	4.3%	138.0%
INDIGO	Bearish	1365.7	1.9%	135.4%
ONGC	Bearish	128.5	0.3%	122.9%
SUNPHARMA	Bearish	446	2.0%	107.0%
HCLTECH	Bullish	586.75	2.1%	105.0%

Stocks Near Highest Call Open Interest

Symbol	Trend	Future Price	Highest Call OI	No of Contracts
ITC	Bearish	239.15	240	1603
INFY	Bearish	746.6	750	1022
RBLBANK	Bullish	358.1	360	495

Open interest Losers

Symbol	Trend	Future Price	Price Chng %	Fut OI Chng %
ESCORTS	Bullish	621.6	0.1%	-13.4%
SAIL	Bullish	46.8	-1.4%	-11.3%
GAIL	Bearish	125.4	1.5%	-8.2%
AMBUJACEM	Bearish	204.15	-1.2%	-6.7%
BPCL	Bearish	483.4	-1.5%	-5.8%

Highest Position Carry forward %

Symbol	Trend	Future Price	Price Chng %	O I Chng / Volume
PAGEIND		23351.6	-1.2%	39.3%
BEL	Bearish	101.6	-2.0%	33.4%
PVR	Bullish	1882.2	0.0%	32.3%
GODREJCP	Bearish	690.25	0.6%	24.2%
M&MFIN	Bearish	337.05	-1.2%	23.1%

Stocks Near Highest Put Open Interest

Symbol	Trend	Future Price	Highest Put OI	No of Contracts
DISHTV	Bearish	12.75	13	31
CASTROLIND	Bearish	129.6	130	27
PAGEIND		23351.6	23500	1

Nifty 50 Daily Levels

Symbol	Cash Close	Trend	5 Day SMA	10 Day SMA	20 Day SMA	R3	R2	R1	Mid Point	S1	S2	S3
NIFTY50	12,226.65	UP	12223.1	12223.7	12131.1	12400.4	12327.3	12278.0	12254.4	12230.8	12181.5	12108.4
NIFTYBANK	32,069.25	NEUTRAL	32226.5	32254.8	31995.1	32640.9	32448.4	32318.6	32256.6	32194.5	32064.7	31872.2
NIFTYIT	15,936.60	UP	15759.2	15777.1	15548.9	16011.7	15917.2	15853.6	15823.1	15792.7	15729.0	15634.6
ADANIPO RTS	382.50	UP	375.1	371.0	371.0	391.7	387.2	384.3	382.8	381.4	378.4	374.0
ASIANPAINT	1,751.40	DOWN	1784.5	1795.5	1770.1	1806.3	1788.6	1776.7	1771.0	1765.3	1753.4	1735.8
AXISBANK	742.95	NEUTRAL	751.4	747.7	740.5	767.9	758.9	752.9	750.0	747.0	741.0	732.0
BAJAJ-AUTO	3,072.05	DOWN	3156.0	3190.2	3209.0	3149.4	3122.9	3105.1	3096.5	3088.0	3070.1	3043.6
BAJFINANCE	4,193.45	NEUTRAL	4229.8	4202.4	4123.0	4321.0	4270.3	4236.1	4219.8	4203.4	4169.2	4118.5
BAJAJFINSV	9,345.85	NEUTRAL	9412.5	9373.5	9259.3	9623.0	9524.2	9457.6	9425.7	9393.9	9327.3	9228.5
BPCL	483.50	DOWN	489.5	487.4	489.3	502.1	493.8	488.2	485.5	482.8	477.2	468.9
BHARTIARTL	455.10	NEUTRAL	456.0	454.8	447.2	469.5	462.3	457.5	455.2	452.8	448.0	440.8
INFRA TEL	248.15	DOWN	252.8	253.9	253.6	262.5	256.7	252.8	250.9	249.0	245.1	239.3
BRITANNIA	3,038.80	DOWN	3041.4	3061.7	3065.4	3118.2	3082.1	3057.7	3046.1	3034.5	3010.1	2974.0
CIPLA	469.95	NEUTRAL	475.5	474.5	466.6	480.9	476.3	473.2	471.7	470.2	467.2	462.6
COALINDIA	211.85	UP	210.4	205.0	198.9	216.9	214.2	212.3	211.5	210.6	208.8	206.1
DRREDDY	2,883.90	UP	2878.3	2882.3	2876.0	2920.1	2897.2	2881.8	2874.4	2867.0	2851.6	2828.7
EICHANMOT	21,189.25	DOWN	22033.1	22070.0	21846.3	22082.9	21738.4	21506.2	21395.1	21283.9	21051.7	20707.2
GAIL	125.65	UP	122.1	120.7	119.2	127.8	126.2	125.1	124.6	124.1	123.0	121.4
GRASIM	756.65	UP	749.2	744.9	755.3	782.1	771.8	764.8	761.5	758.2	751.2	740.9
HCLTECH	585.05	UP	573.6	569.7	561.1	588.2	583.7	580.7	579.3	577.9	574.9	570.4
HDFCBANK	1,268.40	DOWN	1277.6	1282.2	1272.3	1301.3	1289.4	1281.4	1277.6	1273.7	1265.7	1253.9
HEROMOTOCO	2,432.35	NEUTRAL	2443.3	2434.4	2383.8	2490.5	2460.7	2440.5	2430.9	2421.3	2401.1	2371.3
HINDALCO	216.45	NEUTRAL	217.0	216.2	210.7	223.3	220.8	219.1	218.3	217.5	215.8	213.3
HINDUNILVR	1,927.45	DOWN	1932.5	1939.7	1964.8	1966.4	1949.5	1938.2	1932.8	1927.3	1916.0	1899.1
HDFC	2,454.45	UP	2441.1	2430.3	2391.6	2508.4	2484.4	2468.2	2460.4	2452.7	2436.5	2412.5
ICICIBANK	538.85	NEUTRAL	539.8	541.6	538.2	553.5	546.6	542.0	539.7	537.5	532.8	525.9
ITC	238.50	NEUTRAL	238.5	238.5	239.5	243.5	241.4	239.9	239.2	238.5	237.0	234.8
IOC	126.85	UP	126.4	126.6	126.3	130.0	128.5	127.4	126.9	126.4	125.4	123.8
INDUSINDBK	1,528.85	UP	1516.7	1513.0	1489.2	1582.2	1555.5	1537.5	1528.9	1520.3	1502.3	1475.7
INFY	746.00	UP	736.3	734.8	726.8	763.0	751.7	744.0	740.4	736.7	729.0	717.7
JSWSTEEL	272.45	UP	271.6	269.1	263.0	282.6	278.5	275.8	274.5	273.1	270.4	266.3
KOTAKBANK	1,657.10	DOWN	1675.5	1686.6	1691.4	1695.9	1680.1	1669.4	1664.3	1659.2	1648.5	1632.7
LT	1,335.05	UP	1318.2	1309.4	1302.0	1369.9	1355.0	1345.0	1340.2	1335.4	1325.3	1310.4
M&M	532.75	NEUTRAL	535.5	532.0	522.9	550.1	543.2	538.5	536.3	534.1	529.4	522.5
MARUTI	7,254.25	NEUTRAL	7336.1	7321.7	7204.3	7483.9	7387.8	7323.0	7292.1	7261.1	7196.3	7100.2
NTPC	119.35	NEUTRAL	119.6	117.6	115.6	122.5	121.4	120.7	120.4	120.0	119.3	118.3
NESTLEIND	14,593.60	NEUTRAL	14747.9	14697.9	14438.5	14916.6	14788.8	14702.7	14661.5	14620.3	14534.1	14406.4
ONGC	128.45	UP	128.1	127.3	126.7	131.5	129.9	128.8	128.3	127.7	126.6	125.0
POWERGRID	193.00	UP	192.8	189.7	187.8	197.2	195.6	194.6	194.1	193.5	192.5	190.9
RELIANCE	1,537.15	NEUTRAL	1528.1	1541.5	1556.7	1566.0	1551.1	1541.0	1536.2	1531.4	1521.4	1506.4
SBIN	333.70	NEUTRAL	335.1	334.4	329.1	347.9	342.2	338.3	336.5	334.7	330.8	325.1
SUNPHARMA	444.60	UP	435.3	431.3	431.9	449.3	444.5	441.3	439.8	438.2	435.0	430.3
TCS	2,200.65	UP	2174.2	2194.1	2148.0	2219.7	2199.4	2185.7	2179.2	2172.6	2158.9	2138.6
TATAMOTORS	191.10	UP	187.6	181.6	176.0	202.1	197.3	194.0	192.4	190.9	187.6	182.7
TATASTEEL	483.70	UP	476.6	470.7	446.2	499.8	492.0	486.8	484.3	481.8	476.5	468.7
TECHM	775.10	UP	769.7	773.0	769.0	783.1	776.8	772.6	770.6	768.5	764.3	758.0
TITAN	1,139.70	DOWN	1166.4	1183.1	1177.8	1177.8	1162.7	1152.5	1147.7	1142.8	1132.6	1117.5
UPL	590.75	UP	589.7	582.3	572.9	605.5	599.3	595.1	593.1	591.1	586.9	580.7
ULTRACEMCO	4,219.20	UP	4125.4	4104.5	4087.6	4338.1	4284.9	4249.1	4232.0	4214.9	4179.1	4125.9
VEDL	157.75	UP	155.8	152.1	149.0	163.8	161.2	159.4	158.6	157.8	156.0	153.4
WIPRO	251.10	UP	248.4	249.8	246.3	253.2	251.5	250.3	249.7	249.1	247.9	246.2
YESBANK	47.10	NEUTRAL	47.1	48.4	48.6	51.5	49.4	47.9	47.2	46.5	45.1	42.9
ZEEL	273.70	DOWN	289.4	291.9	286.3	297.4	289.5	284.2	281.7	279.1	273.8	265.9

Research Team Tel: 022 – 71148579

E-mail: research@inventuregrowth.comWebsite: [Inventuregrowth.com](http://www.inventuregrowth.com)

This Report is published by Inventure Growth & Securities Limited (hereinafter referred to as “IGSL”) for private circulation. IGSL is a registered Research Analyst under SEBI (Research Analyst) Regulations, 2014 having Registration no. INH000006129. IGSL is also a registered Stock Broker with National Stock Exchange of India Limited, BSE Limited and Metropolitan Stock Exchange of India Limited (MSE) in cash, F&O & currency derivatives segments. It is also registered as a Depository Participant with CDSL and is also registered with AMFI as a Mutual Fund Distributor

IGSL have not been debarred / suspended by SEBI for Retail & Institutional business or any other regulatory authority for accessing / dealing in securities Market other than PRO business. IGSL, its associates or analyst or his relatives may or may not hold any financial interest in the subject company. IGSL or its associates or Analyst do not have any conflict or material conflict of interest at the time of publication of the research report with the subject company. IGSL or its Affiliates may or may not have been beneficial ownership of one percent or more of the securities mentioned in this report. However, one or more of IGSL or its Affiliates may, from time to time, have a long or short position in any of the securities mentioned herein and may buy or sell those securities or options thereon, either on their own account.

IGSL or its associates / analyst has not received any compensation / managed or co-managed public offering of securities of the company covered by Analyst during the past twelve months. IGSL or its associates have not received any compensation or other benefits from the company covered by Analyst or third party in connection with the research report. Analyst has not served as an officer, director or employee of Subject Company and IGSL / analyst has not been engaged in market making activity of the subject company.

Analyst Certification: I/We, **Virat Jagad** the research analyst is the author of this report, hereby certify that the views expressed in this research report accurately reflects my/our personal views about the subject securities, issuers, products, sectors or industries. It is also certified that no part of the compensation of the analyst(s) was, is, or will be directly or indirectly related to the inclusion of specific recommendations or views in this research. The analyst(s) principally responsible for the preparation of this research report and has taken reasonable care to achieve and maintain independence and objectivity in making any recommendations.

Research Team	Profile	Email ID
Mr. Prashant Barwaliya	Head- Research	Prashant.b@inventuregrowth.com
Mr. Virat Jagad	Technical Analyst	virat.jagad@inventuregrowth.com
Ms. Jeni Rita	Fundamental Analyst	Jeni.rita@inventuregrowth.com
Ms. Darshita Shah	Fundamental Analyst	Darshita.shah@inventuregrowth.com

Created by: **IGSL - Research**
Inventure Growth & Securities Ltd, 201, Viraj Tower, Near Landmark Building,
Western Express Highway, Andheri (East), Mumbai - 400 093
Tele: 91-22-71148500 , Fax: 91-22-40751511.
E-mail: Research@inventuregrowth.com , website : <http://www.inventuregrowth.com>

DISCLAIMER

Inventure Growth and Securities Limited (hereinafter referred to as “IGSL”) is a registered Member of National Stock Exchange of India Limited, Bombay Stock Exchange Limited and Metropolitan Stock Exchange Limited. It is also registered as a Depository Participant with CDSL. It also has registration with AMFI as a Mutual Fund Distributor. Inventure Growth and Securities Limited is a registered entity with SEBI for Research Analyst in terms of SEBI (Research Analyst) Regulations, 2014 vide registration number INH000006129. IGSL has not been debarred/ suspended by SEBI or any other regulatory authority for accessing /dealing in securities Market. IGSL or its associates/ analyst has not received any compensation / managed or co-managed public offering of securities of the company covered by Analyst during the past twelve months.

This document is solely for the personal information of the recipient, and must not be singularly used as the basis of any investment decision. Nothing in this document should be construed as investment or financial advice. Each recipient of this document should make such investigations as they deem necessary to arrive at an independent evaluation of an investment in the securities of the companies referred to in this document (including the merits and risks involved), and should consult their own advisors to determine the merits and risks of such an investment. Reports based on technical and derivative analysis center on studying charts of a stock's price movement, outstanding positions and trading volume, as opposed to focusing on a company's fundamentals and, as such, may not match with a report on a company's fundamentals. Investors are advised to refer the Fundamental and Technical Research Reports available on our website to evaluate the contrary view, if any.

The information in this document has been printed on the basis of publicly available information, internal data and other reliable sources believed to be true, but we do not represent that it is accurate or complete and it should not be relied on as such, as this document is for general guidance only. Inventure Growth and Securities Limited or any of its affiliates/ group companies shall not be in any way responsible for any loss or damage that may arise to any person from any inadvertent error in the information contained in this report. Inventure Growth and Securities Limited has not independently verified all the information contained within this document. Accordingly, we cannot testify, nor make any representation or warranty, express or implied, to the accuracy, contents or data contained within this document. While Inventure Growth and Securities Limited endeavors to update on a reasonable basis the information discussed in this material, there may be regulatory, compliance, or other reasons that prevent us from doing so. This document is being supplied to you solely for your information, and its contents, information or data may not be reproduced, redistributed or passed on, directly or indirectly.

Neither Inventure Growth and Securities Limited , nor its directors, employees or affiliates shall be liable for any loss or damage that may arise from or in connection with the use of this information.