

SENSEX	NIFTY	INDIAVIX	BANKNIFTY	10YR G-SEC	USDINR
41558	12255.85	11.01	32354.9	6.51	71.31
-0.04%	0.08%	4.58%	-0.18%	0.11%	0.06%

Nifty Short Term View

Nifty Close	R1	R2	S1	S2
12255.85	12295	12349	12212	12178

Indian shares finished little changed on Monday, amid lack of any major domestic or global triggers. Investors awaited auto sales data as well as reports on core sector output data, external debt and manufacturing due this week for directional cues. Nifty index ended up 14.80 points, at 12,260.60.

Nifty formed hammer pattern on a daily chart which indicates that bulls tired where faced resistance near previous high. We may see some range bound move in near future before nifty close above all time high.



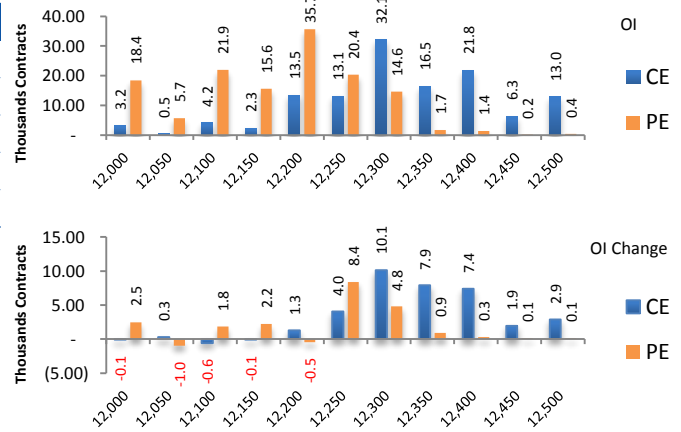
News Buzz

- In the second special open market operation (OMO), the Reserve Bank of India on Monday bought Rs. 10,000 crore of long-term government securities and sold Rs. 8,501 crore of three short-term bonds.
- Reliance Industries and UK's BP plc paid USD 36 million to get their defaulting Canadian partner Niko_Resources to exit from the eastern offshore KG-D6 block and its 10 per cent stake has been taken over by Reliance and BP. **Positive for Reliance**
- Reliance Jio added over 91 lakh new subscribers in October, taking its total subscriber base to 36.43 crore, Vodafone Idea added nearly 1.9 lakh new customers to its overall tally to around 37.27 crore. Around 81,974 subscribers were added by Bharti Airtel and its subscriber base by the end of October stood at 32.56 crore. **Positive for Reliance Jio**
- Bharat Forge increased its stake in aerospace and defense technology supplier Aeron Systems in its bid to increase its know-how in the defense technology by paying Rs 2 crore to acquire 19,500 equity shares in Aeron, bringing its total stake in the latter to 22.42%. **Positive for Bharat Forge**
- Pharmaceutical major Dr Reddy's Laboratories on Monday announced the launch of sodium nitroprusside injection, primarily used for immediate control of high blood pressure, after it received US Food and Drug Administration's approval. **Positive for Dr. Reddy's Laboratories**
- The government is facing hurdles in trimming its stakes in Power Finance Corp. Ltd (PFC) and NTPC Ltd, as the companies may breach a bond covenant that requires the companies to be majority-owned by the government. **Negative for PFC and NTPC**
- Chalet Hotels Ltd. on Monday has entered into five new agreements with global hospitality major Marriott International Inc., extending their collaboration further and are expected to extend contracts across brands such as 'W', 'Westin' and 'Marriott' in Hyderabad and Mumbai. **Positive for Chalet Hotels**
- AstraZeneca and Merck's ovarian cancer drug Lynparza has received US regulatory approval for the treatment of advanced pancreatic cancer, cementing its lead in a niche category of cancer treatments. **Positive for Astrazeneca**

Derivative Activity

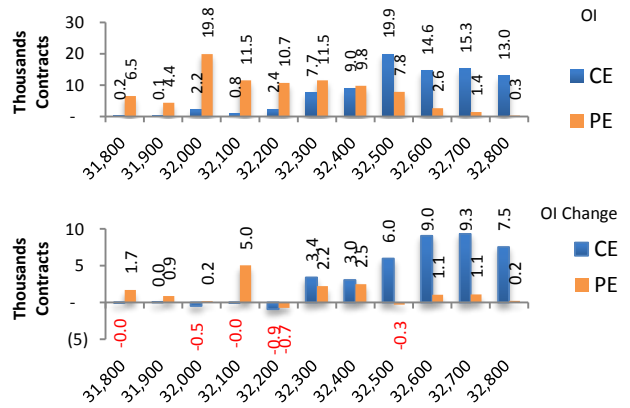
Index	NIFTY	Change
Fut Closing	12329.3	0.1%
Prem /Disc	73.45	0.00
OI Qty	1.31 cr.	7.0%
Nifty PCR	1.15	
Highest OI	12300 CE	12000 PE

- Yesterday NIFTY future was up 0.08% with increase in O I by 7.04%.
- Nifty Put O I addition was seen at 12250 followed by 12300 which can act as short term support
- Nifty Call O I addition was seen at 12300 followed by 12350. which can act as short term resistance



Index	BANKNIFTY	Change
Fut Closing	32554.05	-0.2%
Prem/Disc	199.15	6.80
OI Qty	0.14 cr.	13.2%
Highest OI	32500 CE	32000 PE

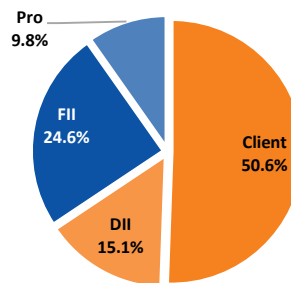
- Yesterday BANKNIFTY future was down 0.16% with increase in O I by 13.19%.
- Nifty Bank Put O I addition was seen at 32100 followed by 32400 which can act as short term support.
- Nifty Bank Call O I addition was seen at 32700 followed by 32600 which can act as short term resistance.



Participant wise OI Activity (Fig in '000 Contracts)

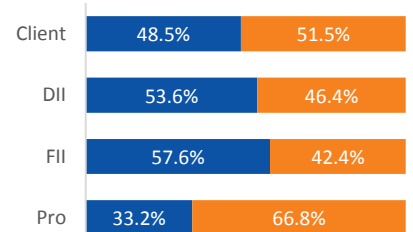
Participant Type	Index Fut Activity	Call Activity	Put Activity
Retail	-0.1	43.2	-1.5
DII	0.9	0.0	0.0
FII	-5.2	-1.3	11.6
Pro	4.4	-41.9	-10.1

Index Fut OI %



Index Future OI %

■ Future Index Long % ■ Future Index Short %



- FII unwound the long Index future by 5.2k contracts and Client unwound the long Index future by 0.1k contracts
- FII added Short calls by 1.3k contracts and added long puts by 11.6 k contracts
- Client added Long calls by 43.2k contracts and added short puts by 1.5 k contracts

Open Interest Gainers

Symbol	Trend	Future Price	Price Chng %	Fut OI Chng %
PVR	Bullish	1909.85	1.1%	23.4%
JUBLFOOD	Bullish	1640.1	0.1%	20.9%
CANBK	Bearish	223.2	-1.3%	19.9%
BATAINDIA	Bullish	1773.3	2.6%	16.9%
COLPAL	Bearish	1474	0.6%	10.9%

Volume Gainers

Symbol	Trend	Future Price	Price Chng %	3 Day Vol Chng %
BATAINDIA	Bullish	1773.3	2.6%	49.5%
PVR	Bullish	1909.85	1.1%	48.0%
TATAMOTORS	Bullish	184.8	4.1%	3.6%
JUBLFOOD	Bullish	1640.1	0.1%	0.6%
ESCORTS	Bullish	635.55	1.3%	-4.2%

Stocks Near Highest Call Open Interest

Symbol	Trend	Future Price	Highest Call OI	No of Contracts
BANKNIFTY	Bullish	32554.05	32500	39798
NIFTY	Bullish	12329.3	12300	32080
ICICIBANK	Bullish	547.85	550	1031

Open interest Losers

Symbol	Trend	Future Price	Price Chng %	Fut OI Chng %
APOLLOHOSP	Bullish	1425.8	0.2%	-8.6%
VOLTAS	Bearish	662.6	1.4%	-5.3%
TATAGLOBAL	Bullish	323.2	0.8%	-4.8%
RBLBANK	Bearish	346.4	2.8%	-3.2%
HINDPETRO	Bearish	263.7	-1.3%	-2.7%

Highest Position Carry forward %

Symbol	Trend	Future Price	Price Chng %	O I Chng / Volume
M&MFIN	Bearish	323.9	-0.8%	54.4%
ULTRACEMCO	Bearish	4081.1	-0.1%	36.6%
EXIDEIND	Bearish	186.5	0.3%	32.3%
COLPAL	Bearish	1474	0.6%	31.9%
PETRONET	Bullish	271.05	-1.0%	31.8%

Stocks Near Highest Put Open Interest

Symbol	Trend	Future Price	Highest Put OI	No of Contracts
CASTROLIND	Bearish	130.05	130	20
SIEMENS	Bullish	1522.95	1520	19

Nifty 50 Daily Levels

Symbol	Cash Close	Trend	5 Day SMA	10 Day SMA	20 Day SMA	R3	R2	R1	Mid Point	S1	S2	S3
NIFTY50	12,255.85	UP	12224.3	12190.9	12083.3	12399.4	12325.0	12274.8	12250.8	12226.8	12176.6	12102.2
NIFTYBANK	32,354.90	UP	32283.0	32203.0	31894.7	32776.5	32579.7	32447.1	32383.6	32320.2	32187.5	31990.8
NIFTYIT	15,775.00	NEUTRAL	15795.1	15668.5	15374.8	15969.3	15873.4	15808.8	15777.9	15746.9	15682.3	15586.4
ADANIPTS	365.95	DOWN	367.0	369.6	370.1	373.2	369.0	366.2	364.8	363.5	360.7	356.5
ASIANPAINT	1,802.30	NEUTRAL	1806.4	1783.4	1754.8	1842.9	1825.1	1813.0	1807.3	1801.5	1789.5	1771.7
AXISBANK	754.10	UP	744.1	745.0	737.0	775.3	766.2	760.1	757.1	754.2	748.0	738.9
BAJAJ-AUTO	3,251.95	UP	3224.4	3220.6	3224.5	3301.0	3273.9	3255.7	3247.0	3238.2	3220.0	3192.9
BAJFINANCE	4,243.30	UP	4175.0	4133.3	4064.1	4353.9	4300.8	4265.1	4248.0	4230.9	4195.1	4142.1
BAJAJFINSV	9,439.20	UP	9334.4	9316.6	9163.4	9652.8	9546.8	9475.4	9441.2	9407.0	9335.5	9229.5
BPLCL	493.05	UP	485.4	489.1	491.9	509.5	500.7	494.8	492.0	489.2	483.3	474.5
BHARTIARTL	460.50	UP	453.7	444.6	446.7	472.2	465.0	460.1	457.8	455.5	450.6	443.4
INFRADEL	255.30	UP	255.0	252.6	254.6	267.4	261.4	257.4	255.5	253.6	249.6	243.6
BRITANNIA	3,047.35	DOWN	3081.9	3079.9	3070.4	3118.9	3081.7	3056.7	3044.7	3032.7	3007.7	2970.6
CIPLA	479.95	UP	473.5	468.6	464.0	490.0	485.2	482.0	480.5	479.0	475.8	471.1
COALINDIA	205.80	UP	199.6	197.8	197.1	210.1	207.4	205.5	204.7	203.8	201.9	199.2
DRREDDY	2,888.85	UP	2886.2	2863.9	2876.1	2940.6	2916.9	2900.9	2893.2	2885.6	2869.6	2845.8
EICHERMOT	22,784.50	UP	22106.8	22008.8	21777.6	23230.4	22866.3	22620.9	22503.4	22386.0	22140.5	21776.4
GAIL	118.90	DOWN	119.3	119.2	119.7	121.9	120.3	119.2	118.7	118.2	117.2	115.6
GRASIM	736.75	DOWN	740.6	751.4	764.6	758.6	748.4	741.5	738.3	735.0	728.1	717.9
HCLTECH	569.30	UP	565.9	561.7	558.3	577.2	572.8	569.8	568.4	567.0	564.1	559.7
HDFCBANK	1,282.15	NEUTRAL	1286.7	1280.7	1267.6	1302.6	1290.5	1282.4	1278.6	1274.7	1266.6	1254.6
HEROMOTOCO	2,479.05	UP	2425.4	2375.4	2377.9	2522.5	2491.6	2470.7	2460.8	2450.8	2429.9	2399.0
HINDALCO	217.95	UP	215.5	213.6	206.3	221.6	219.1	217.5	216.7	215.9	214.3	211.8
HINDUNILVR	1,937.25	DOWN	1947.0	1955.7	1991.3	1977.5	1960.5	1949.1	1943.6	1938.1	1926.6	1909.6
HDFC	2,438.25	UP	2419.6	2411.5	2360.0	2489.6	2465.4	2449.0	2441.2	2433.4	2417.0	2392.8
ICICIBANK	543.95	UP	543.3	541.6	532.7	560.9	553.8	549.0	546.7	544.4	539.6	532.4
ITC	238.20	DOWN	238.5	240.2	241.2	242.0	239.8	238.3	237.6	236.8	235.3	233.1
IOC	126.60	DOWN	126.7	126.7	126.7	130.1	128.5	127.5	127.0	126.4	125.4	123.8
INDUSINDBK	1,531.40	UP	1509.3	1500.9	1497.2	1581.7	1554.9	1536.8	1528.2	1519.5	1501.4	1474.6
INFY	732.90	NEUTRAL	733.4	728.5	718.3	757.5	746.2	738.6	734.9	731.3	723.7	712.4
JSWSTEEL	271.10	UP	266.6	263.2	260.0	278.0	274.0	271.3	270.0	268.7	266.0	262.0
KOTAKBANK	1,690.40	NEUTRAL	1697.8	1705.3	1682.3	1720.3	1704.1	1693.2	1688.0	1682.8	1671.9	1655.7
LT	1,302.30	NEUTRAL	1300.5	1306.0	1300.7	1329.9	1315.4	1305.6	1301.0	1296.3	1286.5	1272.0
M&M	536.90	UP	528.5	523.1	520.9	547.3	540.4	535.8	533.5	531.3	526.6	519.7
MARUTI	7,416.25	UP	7307.2	7256.7	7150.9	7576.6	7478.4	7412.2	7380.6	7348.9	7282.7	7184.5
NTPC	116.55	UP	115.6	115.2	114.5	118.7	117.7	117.0	116.7	116.4	115.7	114.7
NESTLEIND	14,851.90	UP	14648.0	14431.9	14349.6	15032.7	14895.1	14802.4	14758.0	14713.7	14620.9	14483.4
ONGC	127.95	UP	126.4	126.0	126.9	131.5	129.8	128.7	128.2	127.6	126.5	124.9
POWERGRID	190.30	UP	186.6	186.7	187.0	192.7	191.2	190.2	189.7	189.2	188.2	186.7
RELIANCE	1,544.20	DOWN	1554.9	1567.3	1565.6	1573.3	1558.2	1548.1	1543.3	1538.4	1528.3	1513.3
SBIN	334.40	UP	333.8	332.1	330.0	347.4	341.6	337.7	335.8	334.0	330.1	324.3
SUNPHARMA	430.15	NEUTRAL	427.3	431.3	433.2	437.4	432.7	429.6	428.1	426.6	423.4	418.8
TCS	2,183.20	NEUTRAL	2214.1	2183.0	2120.8	2231.4	2211.1	2197.4	2190.9	2184.3	2170.6	2150.3
TATAMOTORS	183.70	UP	175.7	176.4	169.9	189.3	184.6	181.4	179.9	178.4	175.2	170.5
TATASTEEL	474.75	UP	464.7	450.4	429.9	487.5	479.8	474.6	472.1	469.6	464.4	456.7
TECHM	782.70	UP	776.4	776.4	765.5	794.0	787.7	783.5	781.5	779.4	775.2	768.9
TITAN	1,193.75	NEUTRAL	1199.8	1182.6	1177.7	1223.8	1208.2	1197.6	1192.6	1187.6	1177.0	1161.4
UPL	589.35	UP	574.9	569.6	568.1	597.3	591.0	586.8	584.8	582.8	578.6	572.3
ULTRACEMCO	4,051.95	DOWN	4083.6	4078.5	4111.6	4156.1	4104.8	4070.3	4053.8	4037.3	4002.7	3951.5
VEDL	154.50	UP	148.5	149.4	145.9	158.4	155.7	154.0	153.1	152.3	150.5	147.9
WIPRO	248.95	NEUTRAL	251.2	248.5	244.2	251.7	250.0	248.8	248.3	247.7	246.5	244.8
YESBANK	47.35	DOWN	49.8	48.7	52.7	52.2	49.9	48.4	47.7	47.0	45.4	43.2
ZEEL	302.80	UP	294.5	286.9	286.4	317.7	309.3	303.6	300.9	298.2	292.5	284.1

Research Team Tel: 022 – 71148579

E-mail: research@inventuregrowth.comWebsite: [Inventuregrowth.com](http://www.inventuregrowth.com)

This Report is published by Inventure Growth & Securities Limited (hereinafter referred to as “IGSL”) for private circulation. IGSL is a registered Research Analyst under SEBI (Research Analyst) Regulations, 2014 having Registration no. INH000006129. IGSL is also a registered Stock Broker with National Stock Exchange of India Limited, BSE Limited and Metropolitan Stock Exchange of India Limited (MSE) in cash, F&O & currency derivatives segments. It is also registered as a Depository Participant with CDSL and is also registered with AMFI as a Mutual Fund Distributor

IGSL have not been debarred / suspended by SEBI for Retail & Institutional business or any other regulatory authority for accessing / dealing in securities Market other than PRO business. IGSL, its associates or analyst or his relatives may or may not hold any financial interest in the subject company. IGSL or its associates or Analyst do not have any conflict or material conflict of interest at the time of publication of the research report with the subject company. IGSL or its Affiliates may or may not have been beneficial ownership of one percent or more of the securities mentioned in this report. However, one or more of IGSL or its Affiliates may, from time to time, have a long or short position in any of the securities mentioned herein and may buy or sell those securities or options thereon, either on their own account.

IGSL or its associates / analyst has not received any compensation / managed or co-managed public offering of securities of the company covered by Analyst during the past twelve months. IGSL or its associates have not received any compensation or other benefits from the company covered by Analyst or third party in connection with the research report. Analyst has not served as an officer, director or employee of Subject Company and IGSL / analyst has not been engaged in market making activity of the subject company.

Analyst Certification: I/We, **Virat Jagad** the research analyst is the author of this report, hereby certify that the views expressed in this research report accurately reflects my/our personal views about the subject securities, issuers, products, sectors or industries. It is also certified that no part of the compensation of the analyst(s) was, is, or will be directly or indirectly related to the inclusion of specific recommendations or views in this research. The analyst(s) principally responsible for the preparation of this research report and has taken reasonable care to achieve and maintain independence and objectivity in making any recommendations.

Research Team	Profile	Email ID
Mr. Prashant Barwaliya	Head- Research	Prashant.b@inventuregrowth.com
Mr. Virat Jagad	Technical Analyst	virat.jagad@inventuregrowth.com
Ms. Jeni Rita	Fundamental Analyst	Jeni.rita@inventuregrowth.com
Ms. Darshita Shah	Fundamental Analyst	Darshita.shah@inventuregrowth.com

Created by: **IGSL - Research**
Inventure Growth & Securities Ltd, 201, Viraj Tower, Near Landmark Building,
Western Express Highway, Andheri (East), Mumbai - 400 093
Tele: 91-22-71148500 , Fax: 91-22-40751511.
E-mail: Research@inventuregrowth.com , website : <http://www.inventuregrowth.com>

DISCLAIMER

Inventure Growth and Securities Limited (hereinafter referred to as “IGSL”) is a registered Member of National Stock Exchange of India Limited, Bombay Stock Exchange Limited and Metropolitan Stock Exchange Limited. It is also registered as a Depository Participant with CDSL. It also has registration with AMFI as a Mutual Fund Distributor. Inventure Growth and Securities Limited is a registered entity with SEBI for Research Analyst in terms of SEBI (Research Analyst) Regulations, 2014 vide registration number INH000006129. IGSL has not been debarred/ suspended by SEBI or any other regulatory authority for accessing /dealing in securities Market. IGSL or its associates/ analyst has not received any compensation / managed or co-managed public offering of securities of the company covered by Analyst during the past twelve months.

This document is solely for the personal information of the recipient, and must not be singularly used as the basis of any investment decision. Nothing in this document should be construed as investment or financial advice. Each recipient of this document should make such investigations as they deem necessary to arrive at an independent evaluation of an investment in the securities of the companies referred to in this document (including the merits and risks involved), and should consult their own advisors to determine the merits and risks of such an investment. Reports based on technical and derivative analysis center on studying charts of a stock's price movement, outstanding positions and trading volume, as opposed to focusing on a company's fundamentals and, as such, may not match with a report on a company's fundamentals. Investors are advised to refer the Fundamental and Technical Research Reports available on our website to evaluate the contrary view, if any.

The information in this document has been printed on the basis of publicly available information, internal data and other reliable sources believed to be true, but we do not represent that it is accurate or complete and it should not be relied on as such, as this document is for general guidance only. Inventure Growth and Securities Limited or any of its affiliates/ group companies shall not be in any way responsible for any loss or damage that may arise to any person from any inadvertent error in the information contained in this report. Inventure Growth and Securities Limited has not independently verified all the information contained within this document. Accordingly, we cannot testify, nor make any representation or warranty, express or implied, to the accuracy, contents or data contained within this document. While Inventure Growth and Securities Limited endeavors to update on a reasonable basis the information discussed in this material, there may be regulatory, compliance, or other reasons that prevent us from doing so. This document is being supplied to you solely for your information, and its contents, information or data may not be reproduced, redistributed or passed on, directly or indirectly.

Neither Inventure Growth and Securities Limited , nor its directors, employees or affiliates shall be liable for any loss or damage that may arise from or in connection with the use of this information.