

SENSEX	NIFTY	INDIAVIX	BANKNIFTY	10YR G-SEC	USDINR
41163.76	12126.55	11.12	31997.7	6.58	71.33
-0.72%	-0.72%	-4.32%	-0.88%	0.00%	-0.08%

Nifty Short Term View

Nifty Close	R1	R2	S1	S2
12126.55	12188	12285	12092	12037

Indian benchmark indices Sensex and the Nifty extended losses to a third straight session with stocks losing ground on Thursday as traders cut down positions as lack of cues from global markets and worries about economic slowdown weighed as well. Nifty declined 88 points to 12,126.55.

After Bearish engulfing pattern nifty formed strong bearish candle on a daily chart which indicate that bears took charge on index another round of selling can be seen if nifty breach 12037 level.



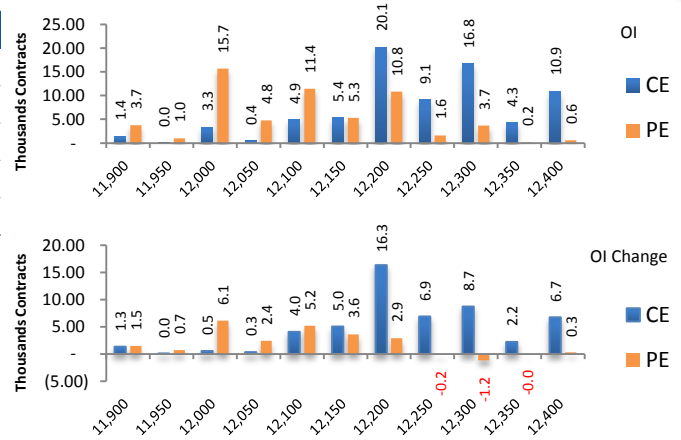
News Buzz

- The Reserve Bank of India on Thursday announced simultaneous purchase and sale of government securities through special open market operations for Rs10,000 crore each on December 30 following a review of liquidity situation.
- Amidst a slowdown in the economy, bank credit is expected to grow at 6.5-7.0% during the current fiscal ending March'20, which will be the lowest growth in 58 years, according to ratings firm ICRA. **Negative for markets**
- Nestlé is going ethnic with ready-to-eat poha and upma with packs starting at Rs. 20 which is expected to help the company compete with local home-grown consumer goods companies such as MTR Foods, iD Fresh Food and Gits. **Positive for Nestlé**
- Care Ratings has downgraded long- and short-term bank facilities of Hindustan Aeronautics Limited worth Rs. 7,300 crore to AA 'plus' with a stable outlook on account of change in operating environment involving reduced advance funding by customers and build-up of receivables position translating into increased reliance on working capital debt. **Negative for HAL**
- State-owned Punjab National Bank (PNB) on December 26 said it has raised Rs 1,500 crore by issuing Basel III compliant bonds. The bank will use the funds for business expansion. **Positive for PNB Bank**
- HG Infra Engineering has been declared L-1 bidder by the National Highways Authority of India (NHAI) for the project 'Construction of proposed Rewari Bypass (NH-11) on Hybrid Annuity Mode (HAM) amounting to Rs 522.02 crore. **Positive for HG Infra Engineering**
- Markets regulator Sebi on Thursday imposed a penalty of Rs 25 lakh each on rating agencies ICRA and CARE for failing to exercise "due diligence" while assigning credit rating to the NCDs of IL&FS. **Negative for ICRA and CARE**
- State-run ONGC has received environment clearance (EC) for carrying out onshore exploration, development and production of oil and gas in 100 locations in non-forest area of Assam, that would entail an investment of Rs 3,500 crore, according to official documents. **Positive for ONGC**
- Government released a fresh capital infusion fund of Rs 2,153 crore for the Allahabad Bank. **Positive for Allahabad Bank**

Derivative Activity

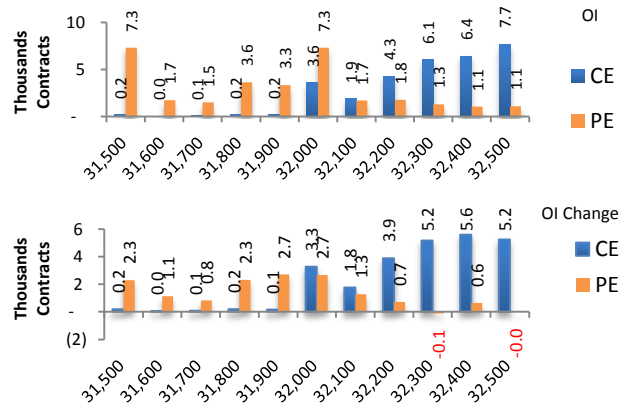
Index	NIFTY	Change
Fut Closing	12195.75	-0.4%
Prem /Disc	69.20	45.30
OI Qty	1.23 cr.	-25.9%
Nifty PCR	0.97	
Highest OI	12200 CE	12000 PE

- Yesterday NIFTY future was down 0.35% with decrease in OI by 25.87%.
- Nifty Put OI addition was seen at 12000 followed by 12100 which can act as short term support
- Nifty Call OI addition was seen at 12200 followed by 12300. which can act as short term resistance



Index	BANKNIFTY	Change
Fut Closing	32186.2	-0.4%
Prem/Disc	188.50	161.50
OI Qty	0.13 cr.	-27.0%
Highest OI	32200 CE	32000 PE

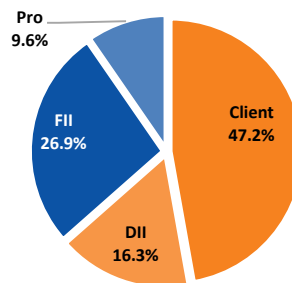
- Yesterday BANKNIFTY future was down 0.38% with decrease in OI by 26.99%.
- Nifty Bank Put OI addition was seen at 31900 followed by 32000 which can act as short term support.
- Nifty Bank Call OI addition was seen at 32400 followed by 32500 which can act as short term resistance.



Participant wise OI Activity (Fig in '000 Contracts)

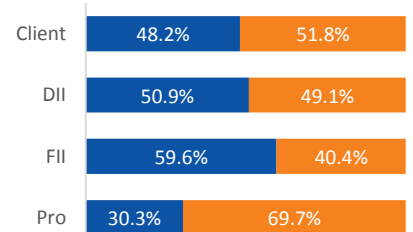
Participant Type	Index Fut Activity	Call Activity	Put Activity
Retail	-0.2	-10.5	12.3
DII	-1.4	-12.2	-21.6
FII	-0.1	-24.1	-86.1
Pro	1.7	46.8	95.4

Index Fut OI %



Index Future OI %

■ Future Index Long % ■ Future Index Short %



- FII unwound the long Index future by 0.1k contracts and Client unwound the long Index future by 0.2k contracts
- FII unwound the long calls by 24.1k contracts and unwound the long puts by 86.1 k contracts
- Client unwound the long calls by 10.5k contracts and covering the short puts by 12.3 k contracts

Open Interest Gainers

Symbol	Trend	Future Price	Price Chng %	Fut OI Chng %
CANBK	Bearish	221.8	-1.9%	10.3%
RELIANCE	Bullish	1528.65	-1.4%	6.8%
LICHSGFIN	Bearish	428.5	0.8%	2.8%
ASIANPAINT	Bullish	1819.5	0.7%	1.4%
TECHM	Bullish	775.75	0.2%	1.4%

Volume Gainers

Symbol	Trend	Future Price	Price Chng %	3 Day Vol Chng %
TATAPOWER	Bearish	55.5	-0.9%	29.3%
GMRINFRA	Bullish	21.3	-0.9%	20.5%
HCLTECH	Bullish	564	0.3%	19.9%
MARICO	Bearish	340.95	2.0%	9.9%
FEDERALBNK	Bearish	85.85	0.3%	3.4%

Stocks Near Highest Call Open Interest

Symbol	Trend	Future Price	Highest Call OI	No of Contracts
BANKNIFTY	Bullish	32186.2	32200	64259
NIFTY	Bullish	12195.75	12200	54353
TCS	Bullish	2212.8	2220	828

Open interest Losers

Symbol	Trend	Future Price	Price Chng %	Fut OI Chng %
WIPRO	Bullish	499.8	-1.9%	-71.6%
POWERGRID	Bearish	185.75	-0.7%	-54.9%
INFY	Bearish	730.55	-0.5%	-52.8%
NTPC	Bearish	115.6	0.3%	-39.2%
RECLTD	Bearish	139.05	1.3%	-31.2%

Highest Position Carry forward %

Symbol	Trend	Future Price	Price Chng %	O I Chng / Volume
RELIANCE	Bullish	1528.65	-1.4%	17.3%
CANBK	Bearish	221.8	-1.9%	12.3%
LICHSGFIN	Bearish	428.5	0.8%	5.2%
TECHM	Bullish	775.75	0.2%	3.6%
ASIANPAINT	Bullish	1819.5	0.7%	3.6%

Stocks Near Highest Put Open Interest

Symbol	Trend	Future Price	Highest Put OI	No of Contracts
CASTROLIND	Bearish	130.05	130	19
TORNTPOWER	Bullish	281.5	280	13

Nifty 50 Daily Levels

Symbol	Cash Close	Trend	5 Day SMA	10 Day SMA	20 Day SMA	R3	R2	R1	Mid Point	S1	S2	S3
NIFTY50	12,214.55	NEUTRAL	12246.1	12141.8	12077.3	12389.3	12313.8	12263.0	12238.7	12214.3	12163.5	12088.0
NIFTYBANK	32,280.75	NEUTRAL	32298.2	32054.2	31874.1	32707.8	32508.6	32374.3	32310.1	32245.9	32111.6	31912.4
NIFTYIT	15,778.20	NEUTRAL	15802.4	15530.1	15307.6	16016.6	15919.1	15853.3	15821.9	15790.4	15724.6	15627.1
ADANIAPORTS	368.60	DOWN	370.4	371.1	371.0	376.4	372.1	369.2	367.8	366.3	363.4	359.1
ASIANPAINT	1,803.45	UP	1798.4	1770.1	1745.2	1841.3	1823.4	1811.3	1805.5	1799.7	1787.6	1769.7
AXISBANK	740.65	NEUTRAL	741.6	739.2	737.3	759.7	750.8	744.8	741.9	739.0	733.0	724.1
BAJAJ-AUTO	3,226.75	UP	3216.4	3226.5	3221.3	3277.8	3250.4	3232.0	3223.1	3214.3	3195.8	3168.5
BAJFINANCE	4,139.50	UP	4129.3	4098.7	4053.1	4259.1	4204.3	4167.4	4149.8	4132.1	4095.2	4040.4
BAJAJFINSV	9,294.85	NEUTRAL	9302.5	9262.1	9147.1	9526.7	9412.9	9336.2	9299.5	9262.7	9186.0	9072.2
BPCL	477.80	DOWN	487.6	489.7	494.3	502.7	494.0	488.2	485.4	482.6	476.8	468.1
BHARTIARTL	457.15	UP	450.7	442.5	445.1	470.7	463.3	458.4	456.0	453.6	448.6	441.2
INFRADEL	255.30	UP	253.1	252.1	253.1	266.8	260.9	256.9	255.0	253.0	249.0	243.1
BRITANNIA	3,091.05	NEUTRAL	3103.4	3080.9	3074.7	3167.9	3129.6	3103.8	3091.4	3079.1	3053.2	3014.9
CIPLA	478.70	UP	469.5	464.2	463.1	482.6	477.9	474.8	473.3	471.8	468.6	464.0
COALINDIA	198.95	UP	198.3	195.4	197.4	203.3	200.7	198.9	198.1	197.3	195.5	192.9
DRREDDY	2,895.95	UP	2882.1	2866.9	2885.4	2950.1	2926.1	2909.9	2902.2	2894.4	2878.2	2854.2
EICHARMOT	21,868.65	DOWN	22085.8	21931.5	21869.9	22751.3	22386.3	22140.2	22022.4	21904.6	21658.5	21293.5
GAIL	119.75	NEUTRAL	119.0	119.2	120.4	123.4	121.8	120.7	120.2	119.7	118.6	117.0
GRASIM	738.50	DOWN	744.7	757.9	770.2	761.8	751.1	743.9	740.4	737.0	729.7	719.0
HCLTECH	560.55	NEUTRAL	567.1	556.9	558.4	574.5	570.1	567.2	565.8	564.3	561.4	557.0
HDFCBANK	1,289.15	NEUTRAL	1293.9	1277.4	1267.5	1320.4	1308.1	1299.8	1295.8	1291.8	1283.5	1271.1
HEROMOTOCO	2,432.65	UP	2384.3	2350.4	2383.3	2488.2	2457.2	2436.4	2426.4	2416.4	2395.5	2364.6
HINDALCO	216.25	UP	215.4	210.4	205.2	220.6	218.1	216.5	215.7	214.9	213.3	210.8
HINDUNILVR	1,946.40	NEUTRAL	1943.9	1968.0	2005.6	1982.6	1965.5	1953.9	1948.4	1942.9	1931.3	1914.2
HDFC	2,412.75	NEUTRAL	2419.3	2389.7	2349.4	2468.6	2443.1	2425.9	2417.7	2409.5	2392.3	2366.8
ICICIBANK	541.10	NEUTRAL	542.0	539.6	529.6	555.4	548.3	543.5	541.2	538.9	534.1	527.0
ITC	238.75	DOWN	241.7	240.4	242.2	243.4	241.1	239.6	238.8	238.1	236.5	234.2
IOC	127.40	UP	126.9	126.8	127.3	130.1	128.5	127.4	126.9	126.4	125.3	123.7
INDUSINDBK	1,521.85	UP	1499.4	1483.3	1500.0	1562.6	1535.8	1517.7	1509.1	1500.4	1482.3	1455.5
INFY	733.40	UP	732.9	724.2	714.9	757.5	746.1	738.4	734.7	731.0	723.3	711.9
JSWSTEEL	266.75	UP	264.9	260.0	258.9	273.2	269.2	266.5	265.2	263.9	261.3	257.3
KOTAKBANK	1,711.55	NEUTRAL	1712.6	1707.5	1675.0	1741.1	1724.6	1713.5	1708.2	1702.9	1691.8	1675.4
LT	1,301.00	DOWN	1311.0	1302.5	1306.0	1335.8	1320.9	1310.9	1306.1	1301.3	1291.3	1276.5
M&M	527.50	NEUTRAL	528.4	519.3	522.1	541.1	533.9	529.0	526.7	524.4	519.5	512.3
MARUTI	7,327.80	UP	7286.3	7197.5	7149.4	7546.1	7445.0	7376.9	7344.4	7311.8	7243.7	7142.6
NTPC	115.20	UP	114.5	114.6	114.4	117.1	116.0	115.2	114.9	114.6	113.8	112.7
NESTLEIND	14,586.00	UP	14490.7	14327.7	14347.5	14831.0	14694.9	14603.2	14559.3	14515.3	14423.6	14287.5
ONGC	126.00	NEUTRAL	125.3	125.8	127.4	128.6	127.0	125.9	125.3	124.8	123.7	122.1
POWERGRID	187.15	NEUTRAL	186.5	186.0	187.9	189.5	188.0	187.0	186.5	186.0	185.0	183.5
RELIANCE	1,546.45	DOWN	1580.6	1574.6	1570.3	1594.2	1576.5	1564.6	1558.9	1553.2	1541.3	1523.6
SBIN	331.45	UP	331.4	328.9	331.3	343.4	337.6	333.8	331.9	330.1	326.2	320.5
SUNPHARMA	429.80	DOWN	432.4	432.9	436.6	439.1	434.1	430.7	429.1	427.5	424.1	419.1
TCS	2,215.60	UP	2213.4	2149.3	2107.3	2265.5	2244.6	2230.4	2223.7	2216.9	2202.7	2181.8
TATAMOTORS	175.50	NEUTRAL	176.3	174.8	168.9	184.9	180.3	177.3	175.8	174.3	171.2	166.6
TATASTEEL	463.00	UP	455.5	439.1	425.7	478.1	470.3	465.1	462.6	460.1	454.8	447.1
TECHM	772.05	NEUTRAL	780.2	772.8	764.7	787.3	780.7	776.2	774.0	771.8	767.3	760.7
TITAN	1,204.10	UP	1186.7	1181.0	1175.3	1238.3	1222.4	1211.7	1206.6	1201.5	1190.8	1174.9
UPL	569.15	NEUTRAL	570.8	567.8	567.2	587.2	580.3	575.6	573.4	571.2	566.5	559.6
ULTRACEMCO	4,097.35	NEUTRAL	4080.6	4066.0	4132.1	4193.7	4141.6	4106.4	4089.6	4072.8	4037.7	3985.5
VEDL	148.05	NEUTRAL	148.4	147.4	145.5	153.0	150.5	148.7	147.9	147.1	145.3	142.8
WIPRO	252.25	UP	251.1	246.7	243.3	256.8	254.9	253.6	253.1	252.5	251.2	249.3
YESBANK	51.20	NEUTRAL	49.8	47.8	54.8	55.2	52.8	51.2	50.4	49.6	48.0	45.6
ZEEL	297.25	UP	287.1	284.1	288.1	312.6	304.3	298.7	296.0	293.3	287.7	279.4

Research Team Tel: 022 – 71148579

E-mail: research@inventuregrowth.com

Website: [Inventuregrowth.com](http://www.inventuregrowth.com)

This Report is published by Inventure Growth & Securities Limited (hereinafter referred to as “IGSL”) for private circulation. IGSL is a registered Research Analyst under SEBI (Research Analyst) Regulations, 2014 having Registration no. INH000006129. IGSL is also a registered Stock Broker with National Stock Exchange of India Limited, BSE Limited and Metropolitan Stock Exchange of India Limited (MSE) in cash, F&O & currency derivatives segments. It is also registered as a Depository Participant with CDSL and is also registered with AMFI as a Mutual Fund Distributor

IGSL have not been debarred / suspended by SEBI for Retail & Institutional business or any other regulatory authority for accessing / dealing in securities Market other than PRO business. IGSL, its associates or analyst or his relatives may or may not hold any financial interest in the subject company. IGSL or its associates or Analyst do not have any conflict or material conflict of interest at the time of publication of the research report with the subject company. IGSL or its Affiliates may or may not have been beneficial ownership of one percent or more of the securities mentioned in this report. However, one or more of IGSL or its Affiliates may, from time to time, have a long or short position in any of the securities mentioned herein and may buy or sell those securities or options thereon, either on their own account.

IGSL or its associates / analyst has not received any compensation / managed or co-managed public offering of securities of the company covered by Analyst during the past twelve months. IGSL or its associates have not received any compensation or other benefits from the company covered by Analyst or third party in connection with the research report. Analyst has not served as an officer, director or employee of Subject Company and IGSL / analyst has not been engaged in market making activity of the subject company.

Analyst Certification: I/We, **Virat Jagad** the research analyst is the author of this report, hereby certify that the views expressed in this research report accurately reflects my/our personal views about the subject securities, issuers, products, sectors or industries. It is also certified that no part of the compensation of the analyst(s) was, is, or will be directly or indirectly related to the inclusion of specific recommendations or views in this research. The analyst(s) principally responsible for the preparation of this research report and has taken reasonable care to achieve and maintain independence and objectivity in making any recommendations.

Research Team	Profile	Email ID
Mr. Prashant Barwaliya	Head- Research	Prashant.b@inventuregrowth.com
Mr. Virat Jagad	Technical Analyst	virat.jagad@inventuregrowth.com
Ms. Jeni Rita	Fundamental Analyst	Jeni.rita@inventuregrowth.com
Ms. Darshita Shah	Fundamental Analyst	Darshita.shah@inventuregrowth.com

Created by: **IGSL - Research**
Inventure Growth & Securities Ltd, 201, Viraj Tower, Near Landmark Building,
Western Express Highway, Andheri (East), Mumbai - 400 093
Tele: 91-22-71148500 , Fax: 91-22-40751511.
E-mail: Research@inventuregrowth.com , website : <http://www.inventuregrowth.com>

DISCLAIMER

Inventure Growth and Securities Limited (hereinafter referred to as “IGSL”) is a registered Member of National Stock Exchange of India Limited, Bombay Stock Exchange Limited and Metropolitan Stock Exchange Limited. It is also registered as a Depository Participant with CDSL. It also has registration with AMFI as a Mutual Fund Distributor. Inventure Growth and Securities Limited is a registered entity with SEBI for Research Analyst in terms of SEBI (Research Analyst) Regulations, 2014 vide registration number INH000006129. IGSL has not been debarred/ suspended by SEBI or any other regulatory authority for accessing /dealing in securities Market. IGSL or its associates/ analyst has not received any compensation / managed or co-managed public offering of securities of the company covered by Analyst during the past twelve months.

This document is solely for the personal information of the recipient, and must not be singularly used as the basis of any investment decision. Nothing in this document should be construed as investment or financial advice. Each recipient of this document should make such investigations as they deem necessary to arrive at an independent evaluation of an investment in the securities of the companies referred to in this document (including the merits and risks involved), and should consult their own advisors to determine the merits and risks of such an investment. Reports based on technical and derivative analysis center on studying charts of a stock's price movement, outstanding positions and trading volume, as opposed to focusing on a company's fundamentals and, as such, may not match with a report on a company's fundamentals. Investors are advised to refer the Fundamental and Technical Research Reports available on our website to evaluate the contrary view, if any.

The information in this document has been printed on the basis of publicly available information, internal data and other reliable sources believed to be true, but we do not represent that it is accurate or complete and it should not be relied on as such, as this document is for general guidance only. Inventure Growth and Securities Limited or any of its affiliates/ group companies shall not be in any way responsible for any loss or damage that may arise to any person from any inadvertent error in the information contained in this report. Inventure Growth and Securities Limited has not independently verified all the information contained within this document. Accordingly, we cannot testify, nor make any representation or warranty, express or implied, to the accuracy, contents or data contained within this document. While Inventure Growth and Securities Limited endeavors to update on a reasonable basis the information discussed in this material, there may be regulatory, compliance, or other reasons that prevent us from doing so. This document is being supplied to you solely for your information, and its contents, information or data may not be reproduced, redistributed or passed on, directly or indirectly.

Neither Inventure Growth and Securities Limited , nor its directors, employees or affiliates shall be liable for any loss or damage that may arise from or in connection with the use of this information.