

SENSEX	NIFTY	INDIAVIX	BANKNIFTY	10YR G-SEC	USDINR
41461.26	12214.55	11.63	32280.75	6.58	71.27
-0.44%	-0.39%	-2.78%	-0.18%	0.08%	-0.12%

## Nifty Short Term View

Nifty Close	R1	R2	S1	S2
12214.55	12335	12383	12141	12105

Indian shares ended lower for a second day running on Tuesday as caution prevailed ahead of the Christmas holiday and the expiration of near-month derivative contracts. Nifty index ended down 50.75 points, at 12,212.

Nifty formed Bearish engulfing pattern on a daily chart which indicate reversal can be seen in Index where it's RSI is also returned from higher level where further weakness can be seen only if nifty drop below 12139 level.

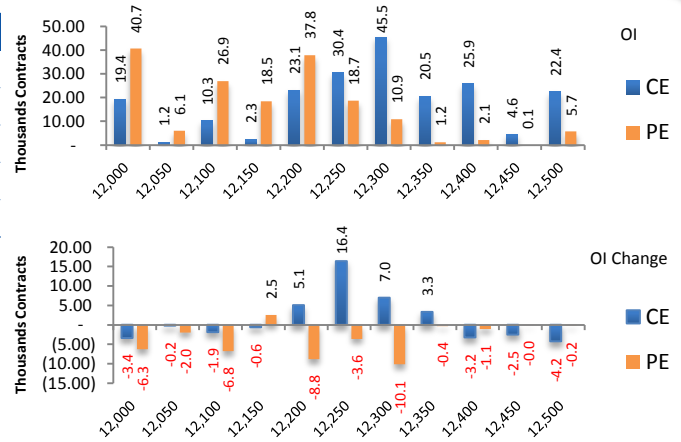


## News Buzz

- HDFC Ltd will raise up to Rs. 2,500 crore by issuing secured redeemable non-convertible debentures on a private placement basis. **Positive for HDFC Ltd.**
- Reliance Industries (RIL), India's most valuable company, has proposed a scheme that will allow shareholders of the unlisted Reliance Retail to exchange their stock for RIL shares, with the swap valuing the retail business at double that of nearest rival D'Mart.
- Indian Railways today unveiled Him Darshan Express comprising all-new Vistadome coaches from Kalka railway station to Shimla. This special train will commute between the Kalka and Shimla station for the next one year till December 24, 2020. **Positive for IRCTC**
- Bharti Infratel has not received government approvals for its merger with Indus Towers, by the December 24 deadline, and has thus yet again extended the deadline for closing the deal to February 24, 2020. **Negative for Bharti Infratel**
- Piramal Enterprises said it will raise up to Rs. 2,750 crore by issuing secured non-convertible debentures on private placement basis. **Positive for Piramal Enterprises**
- NTPC is planning to add 10GW of solar energy generation capacity by 2022, which entails an investment of around Rs 50,000 crore, to be funded mainly by green bonds, a source has said. **Positive for NTPC**
- HCL Technologies has announced an expansion in Canada with a global delivery center in Moncton, New Brunswick. **Positive for HCL Technologies**
- The Ministry of Coal allotted Rohne and Tokisud North coal mines in the Hazaribagh district of Jharkhand to NMDC and the company aims to start commercial operations at the two coal blocks allotted next 12 months. **Positive for NMDC**
- Shriram Transport Finance Company (STFC) is planning to raise up to \$500 million (Rs 3,560 crore) via an overseas bond sale in the New Year, amid signs of picking up credit demand, three people with direct knowledge of the matter said. **Positive for Shriram Transport Finance**

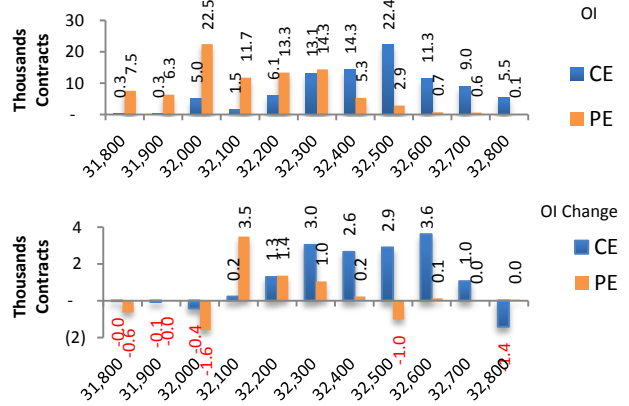
Index	NIFTY	Change
Fut Closing	12238.45	-0.3%
Prem /Disc	23.90	10.20
OI Qty	1.6 cr.	-2.1%
Nifty PCR	1.28	
Highest OI	12300 CE	11500 PE

- Tuesday NIFTY future was down 0.31% with decrease in OI by 2.06%.
- Nifty Put OI Reduction was seen at 12300 followed by 12200
- Nifty Call OI addition was seen at 12250 followed by 12300. which can act as short term resistance



Index	BANKNIFTY	Change
Fut Closing	32307.75	-0.1%
Prem/Disc	27.00	37.05
OI Qty	0.18 cr.	8.1%
Highest OI	32500 CE	32000 PE

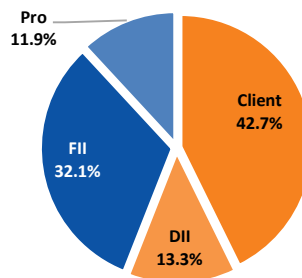
- Tuesday BANKNIFTY future was down 0.07% with increase in OI by 8.05%.
- Nifty Bank Put OI addition was seen at 32100 followed by 32200 which can act as short term support.
- Nifty Bank Call OI addition was seen at 32600 followed by 32300 which can act as short term resistance.



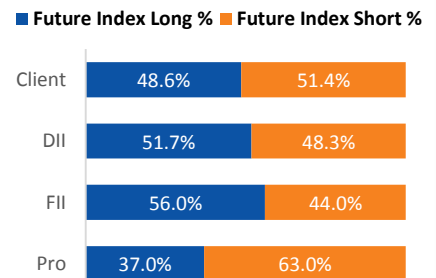
### Participant wise OI Activity (Fig in '000 Contracts)

Participant Type	Index Fut Activity	Call Activity	Put Activity
Retail	-4.2	39.6	-39.1
DII	1.5	0.0	0.0
FII	-4.7	-5.8	20.3
Pro	7.3	-33.8	18.9

### Index Fut OI %



### Index Future OI %



- FII added short Index future by 4.7k contracts and Client unwound the long Index future by 4.2k contracts
- FII unwound the long calls by 5.8k contracts and added long puts by 20.3 k contracts
- Client added Long calls by 39.6k contracts and unwound the long puts by 39.1 k contracts

## Open Interest Gainers

Symbol	Trend	Future Price	Price Chng %	Fut OI Chng %
GMRINFRA	Bullish	21.5	-0.5%	20.7%
NMDC	Bullish	124.8	0.8%	13.9%
COALINDIA	Bearish	199.1	0.6%	13.5%
WIPRO	Bullish	252.35	-0.8%	13.3%
RBLBANK	Bearish	334.3	-0.1%	12.8%

## Volume Gainers

Symbol	Trend	Future Price	Price Chng %	3 Day Vol Chng %
UBL	Bullish	1296.55	4.6%	118.7%
BOSCHLTD		15388.1	-0.4%	109.8%
WIPRO	Bullish	252.35	-0.8%	96.5%
TECHM	Bullish	774.3	-0.5%	96.0%
BPCL	Bearish	478.6	-3.2%	92.8%

## Stocks Near Highest Call Open Interest

Symbol	Trend	Future Price	Highest Call OI	No of Contracts
ZEEL	Bearish	297.35	300	1330
TCS	Bullish	2221.5	2220	1251
BHARTIARTL	Bullish	456.4	460	581

## Open interest Losers

Symbol	Trend	Future Price	Price Chng %	Fut OI Chng %
HEROMOTOCO	Bearish	2430.8	0.5%	-17.0%
BIOCON	Bullish	289.6	1.1%	-14.4%
NATIONALUM	Bearish	42.9	3.6%	-11.4%
JUSTDIAL	Bearish	586.75	-0.1%	-9.6%
KOTAKBANK	Bullish	1712.6	0.5%	-9.1%

## Highest Position Carry forward %

Symbol	Trend	Future Price	Price Chng %	O I Chng / Volume
GMRINFRA	Bullish	21.5	-0.5%	34.9%
COALINDIA	Bearish	199.1	0.6%	16.3%
NMDC	Bullish	124.8	0.8%	16.3%
TATAPOWER	Bearish	56	0.0%	13.4%
GAIL	Bearish	119.85	-0.9%	12.7%

## Stocks Near Highest Put Open Interest

Symbol	Trend	Future Price	Highest Put OI	No of Contracts
CASTROLIND	Bearish	130.4	130	70
HEXAWARE	Bearish	331.7	330	25
MARICO	Bearish	334.35	335	56

# Nifty 50 Daily Levels

Symbol	Cash Close	Trend	5 Day SMA	10 Day SMA	20 Day SMA	R3	R2	R1	Mid Point	S1	S2	S3
NIFTY50	12,214.55	NUETRAL	12246.1	12141.8	12077.3	12389.3	12313.8	12263.0	<b>12238.7</b>	12214.3	12163.5	12088.0
NIFTYBANK	32,280.75	NUETRAL	32298.2	32054.2	31874.1	32707.8	32508.6	32374.3	<b>32310.1</b>	32245.9	32111.6	31912.4
NIFTYIT	15,778.20	NUETRAL	15802.4	15530.1	15307.6	16016.6	15919.1	15853.3	<b>15821.9</b>	15790.4	15724.6	15627.1
ADANIAPORTS	368.60	DOWN	370.4	371.1	371.0	376.4	372.1	369.2	<b>367.8</b>	366.3	363.4	359.1
ASIANPAINT	1,803.45	UP	1798.4	1770.1	1745.2	1841.3	1823.4	1811.3	<b>1805.5</b>	1799.7	1787.6	1769.7
AXISBANK	740.65	NUETRAL	741.6	739.2	737.3	759.7	750.8	744.8	<b>741.9</b>	739.0	733.0	724.1
BAJAJ-AUTO	3,226.75	UP	3216.4	3226.5	3221.3	3277.8	3250.4	3232.0	<b>3223.1</b>	3214.3	3195.8	3168.5
BAJFINANCE	4,139.50	UP	4129.3	4098.7	4053.1	4259.1	4204.3	4167.4	<b>4149.8</b>	4132.1	4095.2	4040.4
BAJAJFINSV	9,294.85	NUETRAL	9302.5	9262.1	9147.1	9526.7	9412.9	9336.2	<b>9299.5</b>	9262.7	9186.0	9072.2
BPCL	477.80	DOWN	487.6	489.7	494.3	502.7	494.0	488.2	<b>485.4</b>	482.6	476.8	468.1
BHARTIARTL	457.15	UP	450.7	442.5	445.1	470.7	463.3	458.4	<b>456.0</b>	453.6	448.6	441.2
INFRADEL	255.30	UP	253.1	252.1	253.1	266.8	260.9	256.9	<b>255.0</b>	253.0	249.0	243.1
BRITANNIA	3,091.05	NUETRAL	3103.4	3080.9	3074.7	3167.9	3129.6	3103.8	<b>3091.4</b>	3079.1	3053.2	3014.9
CIPLA	478.70	UP	469.5	464.2	463.1	482.6	477.9	474.8	<b>473.3</b>	471.8	468.6	464.0
COALINDIA	198.95	UP	198.3	195.4	197.4	203.3	200.7	198.9	<b>198.1</b>	197.3	195.5	192.9
DRREDDY	2,895.95	UP	2882.1	2866.9	2885.4	2950.1	2926.1	2909.9	<b>2902.2</b>	2894.4	2878.2	2854.2
EICHARMOT	21,868.65	DOWN	22085.8	21931.5	21869.9	22751.3	22386.3	22140.2	<b>22022.4</b>	21904.6	21658.5	21293.5
GAIL	119.75	NUETRAL	119.0	119.2	120.4	123.4	121.8	120.7	<b>120.2</b>	119.7	118.6	117.0
GRASIM	738.50	DOWN	744.7	757.9	770.2	761.8	751.1	743.9	<b>740.4</b>	737.0	729.7	719.0
HCLTECH	560.55	NUETRAL	567.1	556.9	558.4	574.5	570.1	567.2	<b>565.8</b>	564.3	561.4	557.0
HDFCBANK	1,289.15	NUETRAL	1293.9	1277.4	1267.5	1320.4	1308.1	1299.8	<b>1295.8</b>	1291.8	1283.5	1271.1
HEROMOTOCO	2,432.65	UP	2384.3	2350.4	2383.3	2488.2	2457.2	2436.4	<b>2426.4</b>	2416.4	2395.5	2364.6
HINDALCO	216.25	UP	215.4	210.4	205.2	220.6	218.1	216.5	<b>215.7</b>	214.9	213.3	210.8
HINDUNILVR	1,946.40	NUETRAL	1943.9	1968.0	2005.6	1982.6	1965.5	1953.9	<b>1948.4</b>	1942.9	1931.3	1914.2
HDFC	2,412.75	NUETRAL	2419.3	2389.7	2349.4	2468.6	2443.1	2425.9	<b>2417.7</b>	2409.5	2392.3	2366.8
ICICIBANK	541.10	NUETRAL	542.0	539.6	529.6	555.4	548.3	543.5	<b>541.2</b>	538.9	534.1	527.0
ITC	238.75	DOWN	241.7	240.4	242.2	243.4	241.1	239.6	<b>238.8</b>	238.1	236.5	234.2
IOC	127.40	UP	126.9	126.8	127.3	130.1	128.5	127.4	<b>126.9</b>	126.4	125.3	123.7
INDUSINDBK	1,521.85	UP	1499.4	1483.3	1500.0	1562.6	1535.8	1517.7	<b>1509.1</b>	1500.4	1482.3	1455.5
INFY	733.40	UP	732.9	724.2	714.9	757.5	746.1	738.4	<b>734.7</b>	731.0	723.3	711.9
JSWSTEEL	266.75	UP	264.9	260.0	258.9	273.2	269.2	266.5	<b>265.2</b>	263.9	261.3	257.3
KOTAKBANK	1,711.55	NUETRAL	1712.6	1707.5	1675.0	1741.1	1724.6	1713.5	<b>1708.2</b>	1702.9	1691.8	1675.4
LT	1,301.00	DOWN	1311.0	1302.5	1306.0	1335.8	1320.9	1310.9	<b>1306.1</b>	1301.3	1291.3	1276.5
M&M	527.50	NUETRAL	528.4	519.3	522.1	541.1	533.9	529.0	<b>526.7</b>	524.4	519.5	512.3
MARUTI	7,327.80	UP	7286.3	7197.5	7149.4	7546.1	7445.0	7376.9	<b>7344.4</b>	7311.8	7243.7	7142.6
NTPC	115.20	UP	114.5	114.6	114.4	117.1	116.0	115.2	<b>114.9</b>	114.6	113.8	112.7
NESTLEIND	14,586.00	UP	14490.7	14327.7	14347.5	14831.0	14694.9	14603.2	<b>14559.3</b>	14515.3	14423.6	14287.5
ONGC	126.00	NUETRAL	125.3	125.8	127.4	128.6	127.0	125.9	<b>125.3</b>	124.8	123.7	122.1
POWERGRID	187.15	NUETRAL	186.5	186.0	187.9	189.5	188.0	187.0	<b>186.5</b>	186.0	185.0	183.5
RELIANCE	1,546.45	DOWN	1580.6	1574.6	1570.3	1594.2	1576.5	1564.6	<b>1558.9</b>	1553.2	1541.3	1523.6
SBIN	331.45	UP	331.4	328.9	331.3	343.4	337.6	333.8	<b>331.9</b>	330.1	326.2	320.5
SUNPHARMA	429.80	DOWN	432.4	432.9	436.6	439.1	434.1	430.7	<b>429.1</b>	427.5	424.1	419.1
TCS	2,215.60	UP	2213.4	2149.3	2107.3	2265.5	2244.6	2230.4	<b>2223.7</b>	2216.9	2202.7	2181.8
TATAMOTORS	175.50	NUETRAL	176.3	174.8	168.9	184.9	180.3	177.3	<b>175.8</b>	174.3	171.2	166.6
TATASTEEL	463.00	UP	455.5	439.1	425.7	478.1	470.3	465.1	<b>462.6</b>	460.1	454.8	447.1
TECHM	772.05	NUETRAL	780.2	772.8	764.7	787.3	780.7	776.2	<b>774.0</b>	771.8	767.3	760.7
TITAN	1,204.10	UP	1186.7	1181.0	1175.3	1238.3	1222.4	1211.7	<b>1206.6</b>	1201.5	1190.8	1174.9
UPL	569.15	NUETRAL	570.8	567.8	567.2	587.2	580.3	575.6	<b>573.4</b>	571.2	566.5	559.6
ULTRACEMCO	4,097.35	NUETRAL	4080.6	4066.0	4132.1	4193.7	4141.6	4106.4	<b>4089.6</b>	4072.8	4037.7	3985.5
VEDL	148.05	NUETRAL	148.4	147.4	145.5	153.0	150.5	148.7	<b>147.9</b>	147.1	145.3	142.8
WIPRO	252.25	UP	251.1	246.7	243.3	256.8	254.9	253.6	<b>253.1</b>	252.5	251.2	249.3
YESBANK	51.20	NUETRAL	49.8	47.8	54.8	55.2	52.8	51.2	<b>50.4</b>	49.6	48.0	45.6
ZEEL	297.25	UP	287.1	284.1	288.1	312.6	304.3	298.7	<b>296.0</b>	293.3	287.7	279.4

Research Team Tel: 022 – 71148579

E-mail: [research@inventuregrowth.com](mailto:research@inventuregrowth.com)Website: [Inventuregrowth.com](http://www.inventuregrowth.com)

This Report is published by Inventure Growth & Securities Limited (hereinafter referred to as “IGSL”) for private circulation. IGSL is a registered Research Analyst under SEBI (Research Analyst) Regulations, 2014 having Registration no. INH000006129. IGSL is also a registered Stock Broker with National Stock Exchange of India Limited, BSE Limited and Metropolitan Stock Exchange of India Limited (MSE) in cash, F&O & currency derivatives segments. It is also registered as a Depository Participant with CDSL and is also registered with AMFI as a Mutual Fund Distributor

IGSL have not been debarred / suspended by SEBI for Retail & Institutional business or any other regulatory authority for accessing / dealing in securities Market other than PRO business. IGSL, its associates or analyst or his relatives may or may not hold any financial interest in the subject company. IGSL or its associates or Analyst do not have any conflict or material conflict of interest at the time of publication of the research report with the subject company. IGSL or its Affiliates may or may not have been beneficial ownership of one percent or more of the securities mentioned in this report. However, one or more of IGSL or its Affiliates may, from time to time, have a long or short position in any of the securities mentioned herein and may buy or sell those securities or options thereon, either on their own account.

IGSL or its associates / analyst has not received any compensation / managed or co-managed public offering of securities of the company covered by Analyst during the past twelve months. IGSL or its associates have not received any compensation or other benefits from the company covered by Analyst or third party in connection with the research report. Analyst has not served as an officer, director or employee of Subject Company and IGSL / analyst has not been engaged in market making activity of the subject company.

**Analyst Certification:** I/We, **Virat Jagad** the research analyst is the author of this report, hereby certify that the views expressed in this research report accurately reflects my/our personal views about the subject securities, issuers, products, sectors or industries. It is also certified that no part of the compensation of the analyst(s) was, is, or will be directly or indirectly related to the inclusion of specific recommendations or views in this research. The analyst(s) principally responsible for the preparation of this research report and has taken reasonable care to achieve and maintain independence and objectivity in making any recommendations.

Research Team	Profile	Email ID
Mr. Prashant Barwaliya	Head- Research	Prashant.b@inventuregrowth.com
Mr. Virat Jagad	Technical Analyst	virat.jagad@inventuregrowth.com
Ms. Jeni Rita	Fundamental Analyst	Jeni.rita@inventuregrowth.com
Ms. Darshita Shah	Fundamental Analyst	Darshita.shah@inventuregrowth.com

**Created by:** **IGSL - Research**  
Inventure Growth & Securities Ltd, 201, Viraj Tower, Near Landmark Building,  
Western Express Highway, Andheri (East), Mumbai - 400 093  
Tele: 91-22-71148500 , Fax: 91-22-40751511.  
E-mail: [Research@inventuregrowth.com](mailto:Research@inventuregrowth.com) , website : <http://www.inventuregrowth.com>

## DISCLAIMER

Inventure Growth and Securities Limited (hereinafter referred to as “IGSL”) is a registered Member of National Stock Exchange of India Limited, Bombay Stock Exchange Limited and Metropolitan Stock Exchange Limited. It is also registered as a Depository Participant with CDSL. It also has registration with AMFI as a Mutual Fund Distributor. Inventure Growth and Securities Limited is a registered entity with SEBI for Research Analyst in terms of SEBI (Research Analyst) Regulations, 2014 vide registration number INH000006129. IGSL has not been debarred/ suspended by SEBI or any other regulatory authority for accessing /dealing in securities Market. IGSL or its associates/ analyst has not received any compensation / managed or co-managed public offering of securities of the company covered by Analyst during the past twelve months.

This document is solely for the personal information of the recipient, and must not be singularly used as the basis of any investment decision. Nothing in this document should be construed as investment or financial advice. Each recipient of this document should make such investigations as they deem necessary to arrive at an independent evaluation of an investment in the securities of the companies referred to in this document (including the merits and risks involved), and should consult their own advisors to determine the merits and risks of such an investment. Reports based on technical and derivative analysis center on studying charts of a stock's price movement, outstanding positions and trading volume, as opposed to focusing on a company's fundamentals and, as such, may not match with a report on a company's fundamentals. Investors are advised to refer the Fundamental and Technical Research Reports available on our website to evaluate the contrary view, if any.

The information in this document has been printed on the basis of publicly available information, internal data and other reliable sources believed to be true, but we do not represent that it is accurate or complete and it should not be relied on as such, as this document is for general guidance only. Inventure Growth and Securities Limited or any of its affiliates/ group companies shall not be in any way responsible for any loss or damage that may arise to any person from any inadvertent error in the information contained in this report. Inventure Growth and Securities Limited has not independently verified all the information contained within this document. Accordingly, we cannot testify, nor make any representation or warranty, express or implied, to the accuracy, contents or data contained within this document. While Inventure Growth and Securities Limited endeavors to update on a reasonable basis the information discussed in this material, there may be regulatory, compliance, or other reasons that prevent us from doing so. This document is being supplied to you solely for your information, and its contents, information or data may not be reproduced, redistributed or passed on, directly or indirectly.

Neither Inventure Growth and Securities Limited , nor its directors, employees or affiliates shall be liable for any loss or damage that may arise from or in connection with the use of this information.