

SENSEX	NIFTY	INDIAVIX	BANKNIFTY	10YR G-SEC	USDINR
40412.57	11910.15	13.38	31256.75	6.75	70.86
0.43%	0.45%	-6.39%	0.31%	0.61%	0.09%

Nifty Short Term View

Nifty Close	R1	R2	S1	S2
11910.15	11986	12080	11796	11719

Indian shares rose modestly on Wednesday as IT stocks rebounded from declines over the previous two sessions. Underlying sentiment remained cautious ahead of key global events as well as the release of macroeconomic data on the domestic front. Nifty index ended up 53.35 points, at 11,910.15.

Nifty formed bullish harami pattern on a daily chart which is reversal pattern. Moreover nifty took support near 11850 which was crucial support zone as well as on RSI it took a support near 46 level. Index can move on a positive side if it sustain above 11986 level.

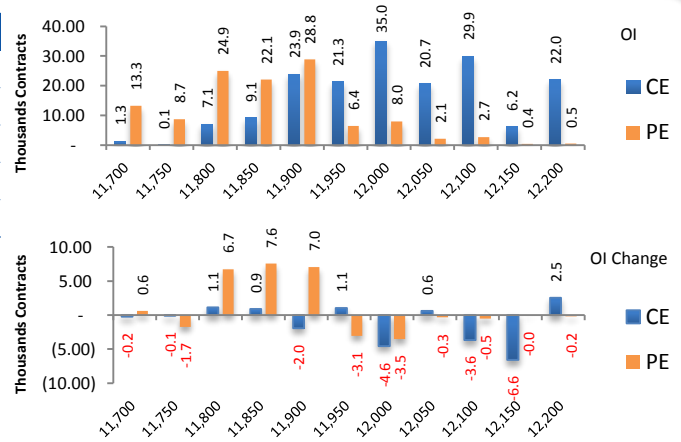


News Buzz

- The Federal Reserve announced its decision to leave interest rates unchanged after three straight rate cuts. The decision was widely anticipated, although the Fed's economic projections provided along with the announcement also showed a majority of meeting participants now expect interest rates to remain on hold throughout 2020.
- The Union Cabinet on Wednesday gave its approval to the "Partial Credit Guarantee Scheme" that allows public sector banks (PSBs) to purchase high-rated pooled assets from financially sound NBFCs and HFCs. **Positive for NBFC and HDFC.**
- The Indian pharmaceutical market (IPM) expanded 14.5 percent in November led by strong sales growth of anti-infectives and respiratory drugs. While the anti-infectives grew at 17 percent in November, respiratory segment grew at 19.7 percent. During the same period last year, anti-infectives grew 7.9 percent and respiratory 13.8 percent. The overall industry grew 8.1 in November 2018. **Positive for Pharma Companies.**
- ITC is looking to garner up to 20 per cent of the Rs 7,400-crore frozen food market in India in next three years The company, which has recently made a foray into the frozen food segment under ITC Master Chef brand targeting both retail and food services players, is also planning to expand its reach to over 30 cities in the retail segment and 100 cities in food services segment during the period. **Positive for ITC.**
- Non-banking lender L&T Finance is raising up to Rs 1,500 crore through a bond sale, the proceeds of which will be used for on-lending and refinancing of existing debt. **Positive for L&T Finance.**
- The Piramal Group said it had partnered with IIFL Wealth Management to launch a Rs 2,000-crore alternative investment fund (AIF) to provide last-mile funding to real estate developers. **Positive for Piramal Group and IIFL.**
- Drug firm Zydus Cadila on Wednesday said it has launched its affordable oral anti-diabetic Vinglyn brand tablets available in two formulations in India. **Positive for Zydus Cadila.**
- Maruti Suzuki India joined hands with Federal Bank to provide dealer finance and customised auto retail financing solutions to customers. **Positive for Fed Bank.**

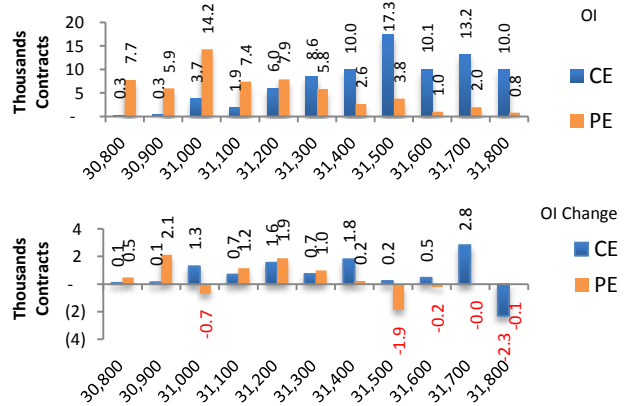
Index	NIFTY	Change
Fut Closing	11938.15	0.3%
Prem /Disc	28.00	-13.40
OI Qty	1.43 cr.	2.8%
Nifty PCR	0.96	
Highest OI	12000 CE	11500 PE

- Yesterday NIFTY future was up 0.34% with increase in O I by 2.79%.
- Put O I addition was seen at 11850 followed by 11900 which can act as short term support
- Call O I reduction was seen at 12150 followed by 12000.



Index	BANKNIFTY	Change
Fut Closing	31314.25	0.3%
Prem/Disc	57.50	-8.70
OI Qty	0.14 cr.	-1.0%
Highest OI	32000 CE	31000 PE

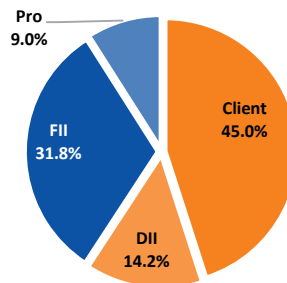
- Yesterday BANKNIFTY future was up 0.28% with decrease in O I by 1.03%.
- Put O I addition was seen at 30900 followed by 31200 which can act as short term support.
- Call O I addition was seen at 31700 followed by 31400 which can act as short term resistance.



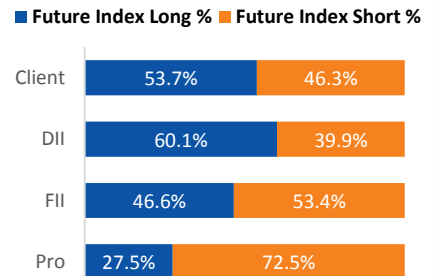
Participant wise OI Activity (Fig in '000 Contracts)

Participant Type	Index Fut Activity	Call Activity	Put Activity
Retail	2.9	-0.3	18.5
DII	1.1	0.00	-2.8
FII	-0.5	0.83	-3.3
Pro	-3.6	-0.51	-12.4

Index Fut OI %



Index Future OI %



- FII added short Index future by 0.5k contracts and Client covered the short Index future by 2.9k contracts
- FII added Long calls by 0.8k contracts and unwounded the long puts by 3.3 k contracts
- Client unwounded the long calls by 0.3k contracts and added long puts by 18.5 k contracts

Open Interest Gainers

Symbol	Trend	Future Price	Price Chng %	Fut OI Chng %
YESBANK	Bearish	39	-17.0%	22.5%
UJJIVAN	Bullish	340.8	-1.2%	22.1%
POWERGRID	Bearish	182.65	-0.5%	13.6%
NMDC	Bullish	112.2	1.5%	12.2%
L&TFH	Bullish	115.15	1.5%	10.8%

Volume Gainers

Symbol	Trend	Future Price	Price Chng %	3 Day Vol Chng %
YESBANK	Bearish	39	-17.0%	124.4%
AUROPHARMA	Bearish	450	3.9%	64.4%
POWERGRID	Bearish	182.65	-0.5%	54.6%
GODREJCP	Bearish	671.8	3.6%	54.4%
GAIL	Bearish	117.7	5.5%	51.6%

Stocks Near Highest Call Open Interest

Symbol	Trend	Future Price	Highest Call OI	No of Contracts
ASIANPAINT	Bullish	1740.4	1740	250
SIEMENS	Bearish	1491.6	1500	120
MUTHOOTFIN	Bullish	700.5	700	90

Open interest Losers

Symbol	Trend	Future Price	Price Chng %	Fut OI Chng %
PVR	Bullish	1742.9	-0.6%	-5.4%
CONCOR	Bearish	558.9	0.7%	-3.6%
EICHERMOT	Bearish	21568.1	1.3%	-3.2%
BAJFINANCE	Bullish	4041.7	1.3%	-2.9%
SRF	Bullish	3270.65	0.8%	-2.8%

Highest Position Carry forward %

Symbol	Trend	Future Price	Price Chng %	O I Chng / Volume
NMDC	Bullish	112.2	1.5%	35.8%
POWERGRID	Bearish	182.65	-0.5%	31.0%
MARICO	Bearish	334.7	-1.6%	27.7%
DABUR	Bearish	453.2	-1.2%	25.5%
NATIONALUM	Bearish	42.35	-0.8%	22.8%

Stocks Near Highest Put Open Interest

Symbol	Trend	Future Price	Highest Put OI	No of Contracts
BHARATFORG	Bearish	441.05	440	59
NIITTECH		1485.15	1480	2
TATACHEM	Bearish	652.45	650	26

Nifty 50 Daily Volatility Levels

Symbol	Futures Close	O I Activity	Trend	Highest Call OI	Highest Put OI	R3	R2	R1	Mid Point	S1	S2	S3
BANKNIFTY	31314.25	Neutral	Neutral	32000	31000	31848.0	31558.7	31363.7	31270.4	31177.1	30982.1	30692.8
NIFTY	11938.15	Neutral	Neutral	12000	11500	12059.7	11988.8	11941.0	11918.2	11895.3	11847.5	11776.7
ADANIPIRTS	370.25	Neutral	Neutral	400	370	380.8	374.9	370.9	369.0	367.1	363.1	357.2
ASIANPAINT	1740.4	Neutral	Up	1740	1700	1766.4	1747.8	1735.3	1729.3	1723.3	1710.8	1692.2
AXISBANK	719.4	Neutral	Neutral	750	720	740.6	729.8	722.5	719.1	715.6	708.3	697.5
BAJAJ-AUTO	3272.8	Neutral	Up	3300	3100	3323.5	3289.1	3265.9	3254.8	3243.6	3220.4	3186.0
BAJAJFINSV	9116.25	Long Built-up	Up	9300	9000	9265.4	9153.5	9078.1	9042.0	9005.9	8930.5	8818.6
BAJFINANCE	4041.7	Short Covering	Up	4200	3900	4120.0	4068.2	4033.3	4016.6	3999.9	3964.9	3913.1
BHARTIARTL	444.25	Neutral	Neutral	500	400	469.6	458.1	450.4	446.7	443.0	435.2	423.8
BPCL	485	Short Built-up	Neutral	500	480	506.6	496.5	489.7	486.5	483.2	476.4	466.3
BRITANNIA	3042.9	Neutral	Neutral	3200	3000	3127.0	3089.6	3064.4	3052.4	3040.3	3015.1	2977.7
CIPLA	451.65	Neutral	Neutral	500	430	465.2	459.0	454.8	452.8	450.8	446.6	440.4
COALINDIA	187.6	Neutral	Neutral	210	190	193.5	190.4	188.4	187.4	186.3	184.3	181.2
DRREDDY	2896.15	Neutral	Neutral	3000	2900	2960.5	2929.4	2908.4	2898.4	2888.3	2867.4	2836.2
EICHERMOT	21568.1	Short Covering	Up	23000	21000	22257.3	21845.2	21567.3	21434.4	21301.4	21023.5	20611.4
GAIL	117.7	Long Built-up	Up	130	115	120.1	117.3	115.5	114.7	113.8	112.0	109.2
GRASIM	770.9	Neutral	Neutral	800	760	800.6	786.1	776.4	771.7	767.0	757.2	742.7
HCLTECH	545.35	Neutral	Neutral	570	560	556.0	550.9	547.5	545.8	544.2	540.7	535.6
HDFC	2324.35	Neutral	Up	2400	2200	2369.9	2341.7	2322.7	2313.6	2304.5	2285.5	2257.3
HDFCBANK	1254.4	Neutral	Neutral	1300	1260	1274.7	1264.1	1257.0	1253.7	1250.3	1243.2	1232.6
HEROMOTOCO	2305.9	Short Built-up	Down	2500	2200	2385.8	2353.6	2331.8	2321.4	2311.0	2289.3	2257.0
HINDALCO	197.4	Neutral	Neutral	210	180	204.8	201.6	199.4	198.4	197.3	195.1	191.9
HINDUNILVR	2013.4	Neutral	Down	2100	2000	2062.5	2041.6	2027.5	2020.8	2014.0	2000.0	1979.1
ICICIBANK	535.15	Neutral	Neutral	550	500	549.1	540.9	535.4	532.8	530.2	524.7	516.6
INDUSINDBK	1428.9	Long Built-up	Neutral	1600	1400	1485.8	1454.6	1433.5	1423.5	1413.4	1392.4	1361.2
INFRADEL	251.7	Neutral	Neutral	300	240	273.0	261.3	253.5	249.7	246.0	238.1	226.4
INFY	721.9	Neutral	Neutral	800	700	744.8	731.7	722.9	718.7	714.4	705.6	692.5
IOC	124.3	Neutral	Up	130	130	126.8	124.9	123.6	123.0	122.4	121.1	119.2
ITC	238.15	Neutral	Neutral	250	230	242.7	240.0	238.2	237.3	236.4	234.6	231.8
JSWSTEEL	250.9	Neutral	Neutral	260	250	262.6	257.0	253.3	251.5	249.6	245.9	240.3
KOTAKBANK	1685.3	Long Built-up	Up	1700	1600	1710.8	1693.4	1681.6	1676.0	1670.4	1658.6	1641.2
LT	1268.8	Neutral	Down	1400	1200	1306.8	1291.4	1281.0	1276.1	1271.1	1260.7	1245.3
M&M	509	Neutral	Neutral	550	500	523.0	515.7	510.8	508.5	506.1	501.2	493.9
MARUTI	7016.25	Neutral	Neutral	7200	7000	7200.8	7102.1	7035.6	7003.8	6972.0	6905.5	6806.9
NESTLEIND	14122.75	Neutral	Neutral	15000	14000	14406.8	14269.3	14176.6	14132.2	14087.9	13995.2	13857.7
NTPC	113.25	Long Built-up	Up	120	115	114.5	113.2	112.3	111.9	111.5	110.6	109.3
ONGC	127.6	Neutral	Up	135	130	130.2	128.3	127.0	126.4	125.7	124.4	122.5
POWERGRID	182.65	Short Built-up	Neutral	190	180	187.2	185.2	183.8	183.1	182.4	181.0	179.0
RELIANCE	1566.85	Neutral	Neutral	1600	1500	1607.4	1587.7	1574.4	1568.0	1561.6	1548.3	1528.6
SBIN	313.6	Neutral	Neutral	350	300	327.6	320.8	316.2	314.1	311.9	307.3	300.5
SUNPHARMA	430.3	Neutral	Neutral	460	400	443.2	436.3	431.6	429.3	427.1	422.4	415.4
TATAMOTORS	162.2	Long Built-up	Neutral	170	150	170.9	166.0	162.7	161.1	159.5	156.2	151.3
TATASTEEL	406.4	Neutral	Neutral	450	400	422.9	413.8	407.6	404.7	401.8	395.6	386.5
TCS	2049.05	Long Built-up	Up	2100	1980	2098.0	2066.5	2045.2	2035.1	2024.9	2003.7	1972.1
TECHM	758.8	Short Covering	Up	800	720	769.2	760.9	755.3	752.7	750.0	744.4	736.1
TITAN	1183.55	Neutral	Neutral	1200	1100	1220.3	1201.9	1189.6	1183.6	1177.7	1165.3	1146.9
ULTRACEMCO	4008.25	Short Built-up	Down	4300	4800	4144.4	4088.0	4050.0	4031.8	4013.6	3975.6	3919.2
UPL	563.1	Short Covering	Neutral	600	560	578.9	570.1	564.1	561.3	558.4	552.4	543.6
VEDL	138.95	Short Built-up	Down	150	130	145.2	142.6	140.8	140.0	139.1	137.4	134.7
WIPRO	240.55	Short Covering	Up	250	240	244.2	241.9	240.2	239.5	238.7	237.1	234.7
YESBANK	39	Short Built-up	Down	100	40	49.8	46.4	44.1	43.0	41.9	39.6	36.2
ZEEL	283.6	Short Covering	Up	300	300	303.1	290.4	281.9	277.9	273.8	265.3	252.7

Research Team Tel: 022 – 71148579

E-mail: research@inventuregrowth.comWebsite: [Inventuregrowth.com](http://www.inventuregrowth.com)

This Report is published by Inventure Growth & Securities Limited (hereinafter referred to as “IGSL”) for private circulation. IGSL is a registered Research Analyst under SEBI (Research Analyst) Regulations, 2014 having Registration no. INH000006129. IGSL is also a registered Stock Broker with National Stock Exchange of India Limited, BSE Limited and Metropolitan Stock Exchange of India Limited (MSE) in cash, F&O & currency derivatives segments. It is also registered as a Depository Participant with CDSL and is also registered with AMFI as a Mutual Fund Distributor

IGSL have not been debarred / suspended by SEBI for Retail & Institutional business or any other regulatory authority for accessing / dealing in securities Market other than PRO business. IGSL, its associates or analyst or his relatives may or may not hold any financial interest in the subject company. IGSL or its associates or Analyst do not have any conflict or material conflict of interest at the time of publication of the research report with the subject company. IGSL or its Affiliates may or may not have been beneficial ownership of one percent or more of the securities mentioned in this report. However, one or more of IGSL or its Affiliates may, from time to time, have a long or short position in any of the securities mentioned herein and may buy or sell those securities or options thereon, either on their own account.

IGSL or its associates / analyst has not received any compensation / managed or co-managed public offering of securities of the company covered by Analyst during the past twelve months. IGSL or its associates have not received any compensation or other benefits from the company covered by Analyst or third party in connection with the research report. Analyst has not served as an officer, director or employee of Subject Company and IGSL / analyst has not been engaged in market making activity of the subject company.

Analyst Certification: I/We, **Virat Jagad** the research analyst is the author of this report, hereby certify that the views expressed in this research report accurately reflects my/our personal views about the subject securities, issuers, products, sectors or industries. It is also certified that no part of the compensation of the analyst(s) was, is, or will be directly or indirectly related to the inclusion of specific recommendations or views in this research. The analyst(s) principally responsible for the preparation of this research report and has taken reasonable care to achieve and maintain independence and objectivity in making any recommendations.

Research Team	Profile	Email ID
Mr. Prashant Barwaliya	Head- Research	Prashant.b@inventuregrowth.com
Mr. Virat Jagad	Technical Analyst	virat.jagad@inventuregrowth.com
Ms. Jeni Rita	Fundamental Analyst	Jeni.rita@inventuregrowth.com
Ms. Darshita Shah	Fundamental Analyst	Darshita.shah@inventuregrowth.com

Created by: **IGSL - Research**
Inventure Growth & Securities Ltd, 201, Viraj Tower, Near Landmark Building,
Western Express Highway, Andheri (East), Mumbai - 400 093
Tele: 91-22-71148500 , Fax: 91-22-40751511.
E-mail: Research@inventuregrowth.com , website : <http://www.inventuregrowth.com>

DISCLAIMER

Inventure Growth and Securities Limited (hereinafter referred to as “IGSL”) is a registered Member of National Stock Exchange of India Limited, Bombay Stock Exchange Limited and Metropolitan Stock Exchange Limited. It is also registered as a Depository Participant with CDSL. It also has registration with AMFI as a Mutual Fund Distributor. Inventure Growth and Securities Limited is a registered entity with SEBI for Research Analyst in terms of SEBI (Research Analyst) Regulations, 2014 vide registration number INH000006129. IGSL has not been debarred/ suspended by SEBI or any other regulatory authority for accessing /dealing in securities Market. IGSL or its associates/ analyst has not received any compensation / managed or co-managed public offering of securities of the company covered by Analyst during the past twelve months.

This document is solely for the personal information of the recipient, and must not be singularly used as the basis of any investment decision. Nothing in this document should be construed as investment or financial advice. Each recipient of this document should make such investigations as they deem necessary to arrive at an independent evaluation of an investment in the securities of the companies referred to in this document (including the merits and risks involved), and should consult their own advisors to determine the merits and risks of such an investment. Reports based on technical and derivative analysis center on studying charts of a stock's price movement, outstanding positions and trading volume, as opposed to focusing on a company's fundamentals and, as such, may not match with a report on a company's fundamentals. Investors are advised to refer the Fundamental and Technical Research Reports available on our website to evaluate the contrary view, if any.

The information in this document has been printed on the basis of publicly available information, internal data and other reliable sources believed to be true, but we do not represent that it is accurate or complete and it should not be relied on as such, as this document is for general guidance only. Inventure Growth and Securities Limited or any of its affiliates/ group companies shall not be in any way responsible for any loss or damage that may arise to any person from any inadvertent error in the information contained in this report. Inventure Growth and Securities Limited has not independently verified all the information contained within this document. Accordingly, we cannot testify, nor make any representation or warranty, express or implied, to the accuracy, contents or data contained within this document. While Inventure Growth and Securities Limited endeavors to update on a reasonable basis the information discussed in this material, there may be regulatory, compliance, or other reasons that prevent us from doing so. This document is being supplied to you solely for your information, and its contents, information or data may not be reproduced, redistributed or passed on, directly or indirectly.

Neither Inventure Growth and Securities Limited , nor its directors, employees or affiliates shall be liable for any loss or damage that may arise from or in connection with the use of this information.