

SENSEX	NIFTY	INDIAVIX	BANKNIFTY	10YR G-SEC	USDINR
40239.88	11856.8	14.29	31160.35	6.71	70.88
-0.61%	-0.68%	-2.11%	-0.50%	0.72%	0.24%

Nifty Short Term View

Nifty Close	R1	R2	S1	S2
11856.8	11986	12080	11796	11719

Indian shares fell notably on Tuesday as uncertainty prevailed ahead of the U.S. tariff deadline on Chinese imports. Investors also awaited the outcome of key central bank meetings this week and Thursday's general election in the U.K. for directional cues. Nifty index ended down 80.70 points, at 11,856.80.

Nifty formed Bearish belt hold pattern on a daily chart where it closed near its support line which can be consider as a strong support line if nifty closed below 11850 level.



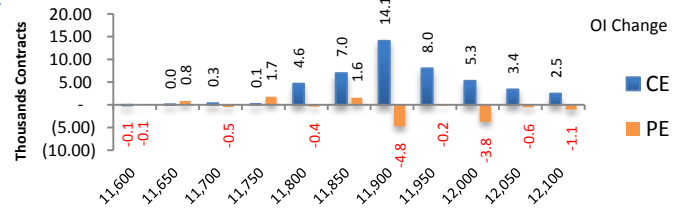
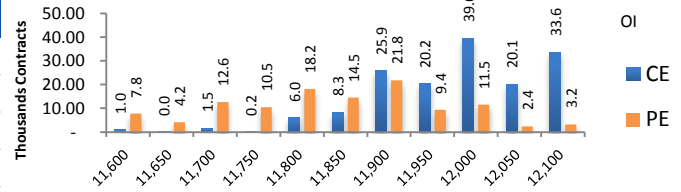
News Buzz

- Tata Motors on Tuesday reported a 15 per cent decline in group's global wholesales at 89,671 units in November. The group had sold 1,04,964 units in the same month last year. Global wholesales of all passenger vehicles in November 2019 were at 58,641 units as against 66,429 units in the same month last year, down 11.72 per cent. **Negative for Tata Motors.**
- Reliance Industries Ltd (RIL) plans to develop an Ethylene Dichloride facility in Ruwais with Abu Dhabi National Oil Co (Adnoc), the state-run oil company of the United Arab Emirates (UAE), the companies said in a joint statement. **Positive for Reliance Industries**
- India's largest lender, State Bank of India (SBI), underreported bad loans and their provisioning by Rs. 11,932 crore and Rs. 12,036 crore, respectively, in 2018-19, the Reserve Bank of India (RBI) has found, the highest such figures reported by any bank so far for the last fiscal. **Negative for SBI.**
- Fitch Ratings has revised its outlook on Cairn India Holdings Ltd (CIHL) to negative from stable saying in its assessment the consolidated credit profile of the company's owner, Vedanta is expected to weaken on lower metal prices. Vedanta owns half of its 70 per cent in the prolific Rajasthan oil block through Cairn India Holdings Ltd (CIHL). **Negative for Vedanta.**
- Competition Commission of India approved the subscription of compulsorily convertible debentures of the Piramal Enterprises by Canadian pension fund CDPQ. **Positive for PEL**
- German chemical and seed company Bayer plans to launch a drought-resistant rice variety in India before the onset of the monsoon season next year. **Positive for Bayer.**
- Led by a steep 25.5 percent fall in cut and polished diamonds exports, the overall gems & jewellery exports fell 4.74 percent to Rs 18,136.2 crore in November year-on-year due to poor consumer sentiment in the key export markets. **Negative for Rajesh Exports**

Derivative Activity

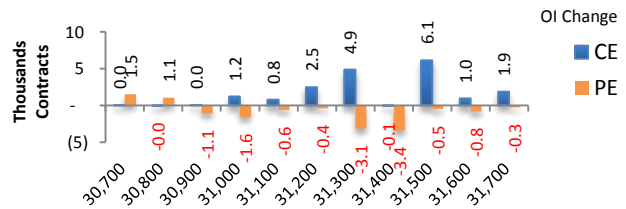
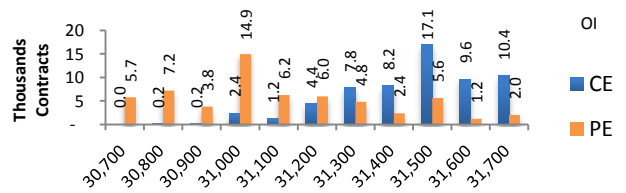
Index	NIFTY	Change
Fut Closing	11898.2	-0.6%
Prem /Disc	41.40	12.20
OI Qty	1.41 cr.	0.4%
Nifty PCR	0.92	
Highest OI	12000 CE	11500 PE

- Yesterday NIFTY future was down 0.57% with increase in OI by 0.44%.
- Put OI Reduction was seen at 12000 followed by 11900
- Call OI addition was seen at 11900 followed by 11950. which can act as short term resistance



Index	BANKNIFTY	Change
Fut Closing	31226.55	-0.5%
Prem/Disc	66.20	-14.80
OI Qty	0.15 cr.	-3.1%
Highest OI	32000 CE	31000 PE

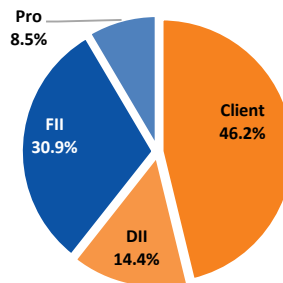
- Yesterday BANKNIFTY future was down 0.54% with decrease in OI by 3.05%.
- Put OI Reduction was seen at 31400 followed by 31300.
- Call OI addition was seen at 31500 followed by 31300 which can act as short term resistance.



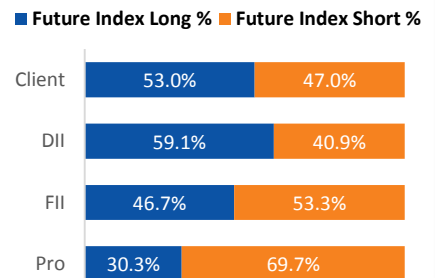
Participant wise OI Activity (Fig in '000 Contracts)

Participant Type	Index Fut Activity	Call Activity	Put Activity
Retail	-4.9	34.4	-16.5
DII	5.2	0.00	-5.9
FII	-0.2	-5.63	8.9
Pro	-0.0	-28.81	13.5

Index Fut OI %



Index Future OI %



- FII added short Index future by 0.2k contracts and Client added short Index future by 4.9k contracts
- FII added Short calls by 5.6k contracts and added long puts by 8.9 k contracts
- Client added Long calls by 34.4k contracts and unwounded the long puts by 16.5 k contracts

Open Interest Gainers

Symbol	Trend	Future Price	Price Chng %	Fut OI Chng %
UJJIVAN	Bullish	344.8	-0.7%	17.7%
APOLLOHOSP	Bearish	1379.55	-2.6%	14.6%
APOLLLOTYRE	Bearish	162.3	-4.6%	9.6%
NMDC	Bullish	110.5	0.5%	8.0%
BHEL	Bearish	44.9	-2.8%	7.2%

Volume Gainers

Symbol	Trend	Future Price	Price Chng %	3 Day Vol Chng %
BEL	Bearish	99.05	-3.6%	58.0%
BPCL	Bearish	487.9	-2.7%	42.8%
CIPLA	Bearish	454	0.9%	42.5%
AUROPHARMA	Bearish	433.15	-3.6%	42.1%
TCS	Bearish	2021.1	-2.3%	40.0%

Stocks Near Highest Call Open Interest

Symbol	Trend	Future Price	Highest Call OI	No of Contracts
PAGEIND		22014.6	22000	14

Open interest Losers

Symbol	Trend	Future Price	Price Chng %	Fut OI Chng %
IDEA	Bullish	6.6	0.8%	-10.1%
JINDALSTEL	Bearish	141.15	-1.5%	-9.5%
PVR	Bullish	1753.05	0.8%	-7.0%
DLF	Bullish	217.55	-0.1%	-6.6%
CANBK	Bearish	211.35	-0.8%	-6.0%

Highest Position Carry forward %

Symbol	Trend	Future Price	Price Chng %	O I Chng / Volume
BHEL	Bearish	44.9	-2.8%	28.0%
CIPLA	Bearish	454	0.9%	27.8%
SHREECEM		20124.8	-1.1%	25.1%
BHARATFORG	Bearish	441.2	-1.1%	25.1%
NMDC	Bullish	110.5	0.5%	21.9%

Stocks Near Highest Put Open Interest

Symbol	Trend	Future Price	Highest Put OI	No of Contracts
BHARATFORG	Bearish	441.2	440	54
GODREJCP	Bearish	648.25	650	60
MARICO	Bearish	340.3	340	70

Nifty 50 Daily Volatility Levels

Symbol	Futures Close	O I Activity	Trend	Highest Call OI	Highest Put OI	R3	R2	R1	Mid Point	S1	S2	S3
BANKNIFTY	31226.55	Neutral	Neutral	32000	31000	31906.9	31609.0	31408.2	31312.1	31216.0	31015.2	30717.3
NIFTY	11898.2	Neutral	Down	12000	11500	12076.3	12004.3	11955.7	11932.5	11909.2	11860.6	11788.6
ADANIPOINTS	367.7	Neutral	Down	400	370	383.1	377.0	372.8	370.9	368.9	364.8	358.7
ASIANPAINT	1718.15	Neutral	Neutral	1740	1700	1759.5	1741.3	1729.1	1723.2	1717.4	1705.1	1687.0
AXISBANK	718.7	Neutral	Down	750	720	748.5	737.3	729.7	726.1	722.5	714.9	703.7
BAJAJ-AUTO	3236.7	Neutral	Neutral	3300	3100	3303.3	3269.0	3245.9	3234.8	3223.7	3200.6	3166.3
BAJAJFINSV	8967.75	Neutral	Neutral	9200	9000	9178.2	9069.5	8996.2	8961.2	8926.1	8852.8	8744.2
BAJFINANCE	3991.45	Short Covering	Up	4100	3900	4073.9	4022.3	3987.6	3971.0	3954.4	3919.6	3868.1
BHARTIARTL	449.1	Neutral	Neutral	500	400	471.7	459.9	452.0	448.2	444.3	436.4	424.6
BPCL	487.9	Short Built-up	Down	500	480	515.8	505.2	498.1	494.7	491.3	484.1	473.6
BRITANNIA	3061.8	Neutral	Neutral	3200	2800	3138.1	3099.7	3073.8	3061.4	3049.0	3023.1	2984.7
CIPLA	454	Long Built-up	Neutral	500	440	464.7	458.3	454.0	452.0	450.0	445.7	439.3
COALINDIA	187.1	Neutral	Down	210	190	195.6	192.4	190.2	189.2	188.2	186.0	182.8
DRREDDY	2900.6	Long Unwinding	Neutral	3000	2900	2970.7	2938.6	2917.0	2906.6	2896.3	2874.6	2842.5
EICHERMOT	21300.6	Neutral	Neutral	23000	20000	22011.3	21596.5	21316.8	21183.0	21049.1	20769.4	20354.6
GAIL	111.6	Short Built-up	Down	130	120	118.9	116.5	114.9	114.2	113.4	111.8	109.5
GRASIM	772.45	Neutral	Neutral	810	750	800.5	785.6	775.5	770.7	765.9	755.9	740.9
HCLTECH	546.3	Neutral	Down	570	555	560.4	555.1	551.5	549.8	548.1	544.5	539.2
HDFC	2302.85	Neutral	Neutral	2400	2200	2364.9	2336.6	2317.5	2308.4	2299.2	2280.1	2251.8
HDFCBANK	1252.9	Neutral	Neutral	1300	1200	1272.3	1261.5	1254.2	1250.7	1247.2	1239.9	1229.1
HEROMOTOCO	2336.95	Short Built-up	Down	2500	2300	2426.2	2393.4	2371.2	2360.6	2350.0	2327.9	2295.0
HINDALCO	199.3	Neutral	Neutral	210	180	206.0	202.7	200.5	199.4	198.3	196.1	192.8
HINDUNILVR	2028.15	Neutral	Up	2100	2000	2063.0	2041.8	2027.5	2020.6	2013.7	1999.4	1978.2
ICICIBANK	530.5	Neutral	Neutral	550	500	545.8	537.5	531.9	529.3	526.6	521.0	512.8
INDUSINDBK	1418.05	Short Built-up	Down	1500	1400	1501.9	1469.5	1447.7	1437.2	1426.8	1404.9	1372.6
INFRADEL	247.75	Neutral	Neutral	300	240	273.4	261.4	253.3	249.4	245.6	237.5	225.4
INFY	715.45	Neutral	Neutral	800	700	743.5	730.1	721.1	716.8	712.5	703.4	690.0
IOC	121.65	Neutral	Down	130	130	126.7	124.9	123.6	123.0	122.4	121.1	119.3
ITC	236.4	Short Built-up	Down	250	230	244.7	241.9	240.0	239.1	238.2	236.3	233.5
JSWSTEEL	252	Neutral	Down	270	250	267.2	261.4	257.4	255.6	253.7	249.7	243.9
KOTAKBANK	1666.7	Neutral	Neutral	1700	1600	1699.3	1682.4	1671.0	1665.6	1660.1	1648.7	1631.8
LT	1283.35	Neutral	Neutral	1400	1300	1313.1	1297.5	1287.0	1282.0	1277.0	1266.5	1250.9
M&M	507.9	Neutral	Down	550	500	526.4	518.8	513.8	511.3	508.9	503.8	496.3
MARUTI	6991.4	Neutral	Neutral	7200	7000	7209.0	7107.4	7039.0	7006.2	6973.5	6905.0	6803.5
NESTLEIND	14141.7	Neutral	Neutral	15000	14000	14462.5	14320.2	14224.3	14178.5	14132.6	14036.7	13894.4
NTPC	110.5	Short Built-up	Down	120	115	114.1	112.9	112.2	111.8	111.4	110.7	109.5
ONGC	125.1	Neutral	Down	135	130	129.7	127.8	126.5	125.9	125.3	124.0	122.1
POWERGRID	183.55	Short Built-up	Down	190	190	190.2	188.0	186.6	185.9	185.2	183.8	181.6
RELIANCE	1569.15	Long Unwinding	Neutral	1600	1500	1613.5	1593.1	1579.4	1572.8	1566.2	1552.5	1532.1
SBIN	314.5	Short Built-up	Neutral	350	300	330.4	323.3	318.5	316.3	314.0	309.2	302.1
SUNPHARMA	428.35	Neutral	Neutral	460	400	442.8	435.7	430.9	428.6	426.2	421.4	414.3
TATAMOTORS	160	Short Built-up	Neutral	170	150	170.6	165.6	162.2	160.6	159.0	155.6	150.6
TATASTEEL	403	Neutral	Neutral	450	400	424.4	415.0	408.7	405.7	402.7	396.4	387.0
TCS	2021.1	Short Built-up	Down	2100	1980	2109.0	2077.1	2055.5	2045.2	2034.9	2013.4	1981.5
TECHM	746.55	Neutral	Down	800	720	765.8	757.9	752.5	749.9	747.4	742.0	734.0
TITAN	1183.7	Neutral	Neutral	1200	1100	1220.2	1201.2	1188.5	1182.4	1176.3	1163.5	1144.6
ULTRACEMCO	4055.3	Short Built-up	Down	4300	4800	4225.1	4166.8	4127.5	4108.7	4089.9	4050.6	3992.3
UPL	559.4	Long Unwinding	Down	600	560	580.8	571.6	565.5	562.5	559.6	553.4	544.3
VEDL	141	Short Built-up	Down	150	130	147.5	144.8	142.9	142.1	141.2	139.4	136.7
WIPRO	238.4	Long Unwinding	Down	250	240	244.4	242.0	240.3	239.6	238.8	237.1	234.7
YESBANK	47	Long Unwinding	Down	100	50	56.8	53.4	51.1	50.0	48.9	46.5	43.1
ZEEL	272.15	Short Built-up	Down	300	300	304.1	291.4	282.9	278.8	274.7	266.1	253.4

Research Team Tel: 022 – 71148579

E-mail: research@inventuregrowth.comWebsite: [Inventuregrowth.com](http://www.inventuregrowth.com)

This Report is published by Inventure Growth & Securities Limited (hereinafter referred to as “IGSL”) for private circulation. IGSL is a registered Research Analyst under SEBI (Research Analyst) Regulations, 2014 having Registration no. INH000006129. IGSL is also a registered Stock Broker with National Stock Exchange of India Limited, BSE Limited and Metropolitan Stock Exchange of India Limited (MSE) in cash, F&O & currency derivatives segments. It is also registered as a Depository Participant with CDSL and is also registered with AMFI as a Mutual Fund Distributor

IGSL have not been debarred / suspended by SEBI for Retail & Institutional business or any other regulatory authority for accessing / dealing in securities Market other than PRO business. IGSL, its associates or analyst or his relatives may or may not hold any financial interest in the subject company. IGSL or its associates or Analyst do not have any conflict or material conflict of interest at the time of publication of the research report with the subject company. IGSL or its Affiliates may or may not have been beneficial ownership of one percent or more of the securities mentioned in this report. However, one or more of IGSL or its Affiliates may, from time to time, have a long or short position in any of the securities mentioned herein and may buy or sell those securities or options thereon, either on their own account.

IGSL or its associates / analyst has not received any compensation / managed or co-managed public offering of securities of the company covered by Analyst during the past twelve months. IGSL or its associates have not received any compensation or other benefits from the company covered by Analyst or third party in connection with the research report. Analyst has not served as an officer, director or employee of Subject Company and IGSL / analyst has not been engaged in market making activity of the subject company.

Analyst Certification: I/We, **Virat Jagad** the research analyst is the author of this report, hereby certify that the views expressed in this research report accurately reflects my/our personal views about the subject securities, issuers, products, sectors or industries. It is also certified that no part of the compensation of the analyst(s) was, is, or will be directly or indirectly related to the inclusion of specific recommendations or views in this research. The analyst(s) principally responsible for the preparation of this research report and has taken reasonable care to achieve and maintain independence and objectivity in making any recommendations.

Research Team	Profile	Email ID
Mr. Prashant Barwaliya	Head- Research	Prashant.b@inventuregrowth.com
Mr. Virat Jagad	Technical Analyst	virat.jagad@inventuregrowth.com
Ms. Jeni Rita	Fundamental Analyst	Jeni.rita@inventuregrowth.com
Ms. Darshita Shah	Fundamental Analyst	Darshita.shah@inventuregrowth.com

Created by: **IGSL - Research**
Inventure Growth & Securities Ltd, 201, Viraj Tower, Near Landmark Building,
Western Express Highway, Andheri (East), Mumbai - 400 093
Tele: 91-22-71148500 , Fax: 91-22-40751511.
E-mail: Research@inventuregrowth.com , website : <http://www.inventuregrowth.com>

DISCLAIMER

Inventure Growth and Securities Limited (hereinafter referred to as “IGSL”) is a registered Member of National Stock Exchange of India Limited, Bombay Stock Exchange Limited and Metropolitan Stock Exchange Limited. It is also registered as a Depository Participant with CDSL. It also has registration with AMFI as a Mutual Fund Distributor. Inventure Growth and Securities Limited is a registered entity with SEBI for Research Analyst in terms of SEBI (Research Analyst) Regulations, 2014 vide registration number INH000006129. IGSL has not been debarred/ suspended by SEBI or any other regulatory authority for accessing /dealing in securities Market. IGSL or its associates/ analyst has not received any compensation / managed or co-managed public offering of securities of the company covered by Analyst during the past twelve months.

This document is solely for the personal information of the recipient, and must not be singularly used as the basis of any investment decision. Nothing in this document should be construed as investment or financial advice. Each recipient of this document should make such investigations as they deem necessary to arrive at an independent evaluation of an investment in the securities of the companies referred to in this document (including the merits and risks involved), and should consult their own advisors to determine the merits and risks of such an investment. Reports based on technical and derivative analysis center on studying charts of a stock's price movement, outstanding positions and trading volume, as opposed to focusing on a company's fundamentals and, as such, may not match with a report on a company's fundamentals. Investors are advised to refer the Fundamental and Technical Research Reports available on our website to evaluate the contrary view, if any.

The information in this document has been printed on the basis of publicly available information, internal data and other reliable sources believed to be true, but we do not represent that it is accurate or complete and it should not be relied on as such, as this document is for general guidance only. Inventure Growth and Securities Limited or any of its affiliates/ group companies shall not be in any way responsible for any loss or damage that may arise to any person from any inadvertent error in the information contained in this report. Inventure Growth and Securities Limited has not independently verified all the information contained within this document. Accordingly, we cannot testify, nor make any representation or warranty, express or implied, to the accuracy, contents or data contained within this document. While Inventure Growth and Securities Limited endeavors to update on a reasonable basis the information discussed in this material, there may be regulatory, compliance, or other reasons that prevent us from doing so. This document is being supplied to you solely for your information, and its contents, information or data may not be reproduced, redistributed or passed on, directly or indirectly.

Neither Inventure Growth and Securities Limited , nor its directors, employees or affiliates shall be liable for any loss or damage that may arise from or in connection with the use of this information.