

SENSEX	NIFTY	INDIAVIX	BANKNIFTY	10YR G-SEC	USDINR
39052.06	11586.35	15.88	28989.45	6.5	71.17
1.17%	1.07%	-2.95%	1.58%	0.48%	0.38%

Nifty Short Term View

Nifty Close	Trend	R1	R2	S1	S2
11586.35	Bullish	11732	11895	11465	11368

Indian shares posted strong gains on Thursday, with benchmark indexes Sensex and Nifty surging for a fifth straight session, after the U.K. and EU announced that they have agreed on a deal for Britain's exit from the EU. Nifty index rose by 122.35 points, to end the session at 11,586.35.

Nifty formed bullish belt hold pattern on a daily chart which indicates that bulls are now in charge. Nifty RSI also closed above 60 RSI level which were acting as a resistance zone. Another round of buying can be seen if nifty breach 11602 level.



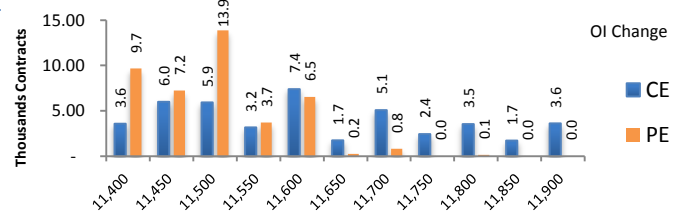
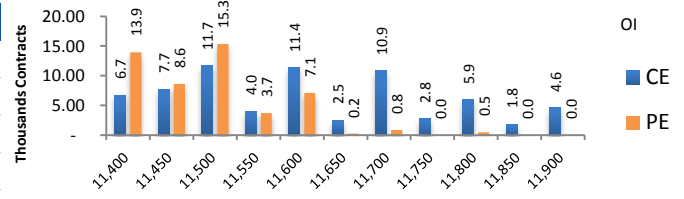
News Buzz

- State-run power producer NTPC on Thursday said it plans to raise \$100 million (around ₹711 crore) from international markets to finance its capital expenditure. The plan also includes a green shoe option of up to USD 300 million (about ₹2,135 crore), NTPC said in a statement. **Positive for NTPC.**
- Zee Entertainment (ZEEL) on Thursday posted a 6.87 per cent year-on-year rise in consolidated net profit. Consolidated revenue of the company jumped 7.40 per cent YoY. EBITDA advanced 2.50 per cent YoY. **In-line result by Zee Entertainment.**
- TVS Motor Q2 profit grows 21% YoY on exceptional gains. Total revenue for the quarter was down by 13% Ebitda margin for the quarter rose to 8.8 per cent from 8 per cent in June quarter and 8.6 per cent in the year-ago quarter. **Positive for TVS Motor.**
- PVR Q2 profit surges 35% YoY, beats analyst estimates. Consolidated revenue jumped 37.35 per cent YoY. **Positive for PVR.**
- Cyient Q2** Consolidated net profit up 8.5% at Rs 97.5 crore versus Rs 89.9 crore, revenue up 6.4% at Rs 1,158.9 crore versus Rs 1,089 crore, QoQ **Positive for Cyient.**
- L&T Infotech posts 10% fall in Q2 profit. company's revenue rose 10.3 per cent while margins contracted to 18.1 per cent from 20.5 per cent in the corresponding quarter. **In-line result by result by L&T Infotech.**
- Results on October 18:** Reliance Industries, Ambuja Cements, ICICI Lombard, L&T Finance Holdings, L&T Technology Services

Derivative Activity

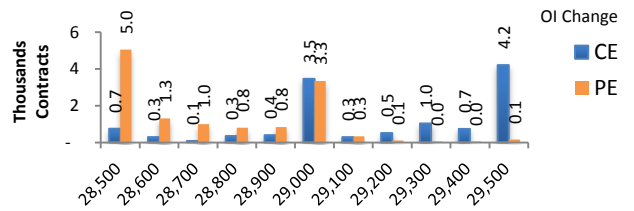
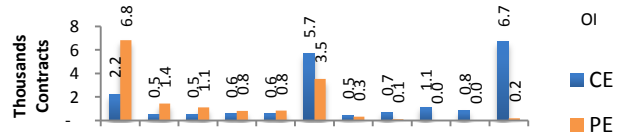
Index	NIFTY	Change
Fut Closing	11600.65	1.1%
Prem /Disc	14.30	2.75
OI Qty	1.57 cr.	-3.2%
Nifty PCR	1.11	
Highest OI	12000 CE	11000 PE

- Yesterday NIFTY future was up 1.09% with decrease in O I by 3.19%.
- Put O I addition was seen at 11500 followed by 11400 which can act as short term support
- Call O I addition was seen at 11600 followed by 11450. which can act as short term resistance



Index	BANKNIFTY	Change
Fut Closing	29079.65	1.7%
Prem/Disc	90.20	24.25
OI Qty	0.16 cr.	-1.5%
Highest OI	29000 CE	28000 PE

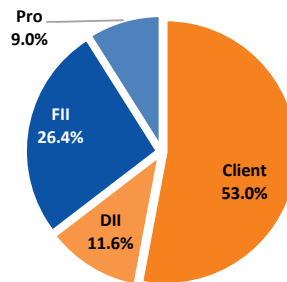
- Yesterday BANKNIFTY future was up 1.66% with decrease in O I by 1.47%.
- Put O I addition was seen at 28500 followed by 29000 which can act as short term support.
- Call O I addition was seen at 29500 followed by 29000 which can act as short term resistance.



Participant wise OI Activity (Fig in '000 Contracts)

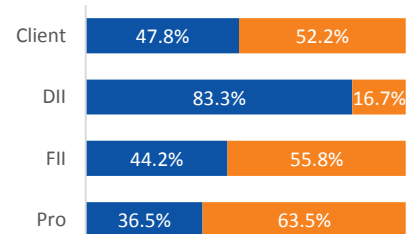
Participant Type	Index Fut Activity	Call Activity	Put Activity
Retail	-7.9	-75.5	-51.5
DII	-1.9	5.37	0.1
FII	11.2	-8.83	4.4
Pro	-1.5	78.92	47.0

Index Fut OI %



Index Future OI %

■ Future Index Long % ■ Future Index Short %



- FII covered the short Index future by 11.2k contracts and Client unwound the long Index future by 7.9k contracts
- FII unwound the long calls by 8.8k contracts and covering the short puts by 4.4 k contracts
- Client unwound the long calls by 75.5k contracts and unwound the long puts by 51.5 k contracts

Open Interest Gainers

Symbol	Trend	Future Price	Price Chng %	Fut OI Chng %
PVR	Bullish	1847.9	1.0%	19.0%
CONCOR	Bearish	602.1	-0.9%	18.5%
INDIGO	Bullish	1742.25	0.9%	16.0%
SIEMENS	Bullish	1620.95	0.7%	14.4%
TVSMOTOR	Bullish	430.6	6.6%	14.1%

Volume Gainers

Symbol	Trend	Future Price	Price Chng %	3 Day Vol Chng %
PVR	Bullish	1847.9	1.0%	140.4%
EXIDEIND	Bearish	178.15	-3.0%	112.3%
ZEEL	Bearish	263	0.9%	100.5%
TVSMOTOR	Bullish	430.6	6.6%	100.3%
EICHERMOT	Bullish	20584.7	6.8%	79.0%

Stocks Near Highest Call Open Interest

Symbol	Trend	Future Price	Highest Call OI	No of Contracts
BANKNIFTY	Consolidation	29079.7	29000	18439
RELIANCE	Bullish	1399.6	1400	3708
TATAMOTORS	Bullish	139.4	140	1670

Open interest Losers

Symbol	Trend	Future Price	Price Chng %	Fut OI Chng %
JUSTDIAL	Bearish	608.6	3.9%	-12.6%
WIPRO	Bullish	248.75	-0.3%	-9.7%
BIOCON	Bullish	258.8	-0.5%	-6.9%
ACC	Bullish	1539.15	0.9%	-6.8%
INDUSINDBK	Bearish	1340.7	5.1%	-6.7%

Highest Position Carry forward %

Symbol	Trend	Future Price	Price Chng %	O I Chng / Volume
CONCOR	Bearish	602.1	-0.9%	30.0%
SHREECEM		18282.6	-2.0%	22.0%
SUNPHARMA	Bearish	402.45	0.3%	17.8%
POWERGRID	Bullish	198.45	-0.5%	17.6%
ITC	Bearish	246.7	0.8%	16.5%

Stocks Near Highest Put Open Interest

Symbol	Trend	Future Price	Highest Put OI	No of Contracts
SHREECEM		18282.6	18250	1

Nifty 50 Daily Volatility Levels

Symbol	Futures Close	O I Activity	Trend	Highest Call OI	Highest Put OI	R3	R2	R1	Mid Point	S1	S2	S3
BANKNIFTY	29079.65	Neutral	Up	29000	28000	29973.5	29406.9	29025.0	28842.2	28659.4	28277.5	27710.9
NIFTY	11600.65	Neutral	Up	12000	11000	11804.6	11671.1	11581.1	11538.1	11495.1	11405.1	11271.6
ADANIPOINTS	410.5	Neutral	Neutral	420	400	425.4	418.0	413.1	410.7	408.3	403.3	396.0
ASIANPAINT	1808.2	Long Built-up	Up	1800	1700	1857.4	1823.3	1800.2	1789.2	1778.2	1755.2	1721.0
AXISBANK	712.3	Neutral	Up	700	640	733.0	718.6	708.9	704.2	699.6	689.8	675.4
BAJAJ-AUTO	3117	Neutral	Up	3200	2900	3177.3	3126.9	3092.9	3076.6	3060.4	3026.4	2975.9
BAJAJFINSV	8338.15	Long Built-up	Up	8500	8000	8584.0	8417.6	8305.4	8251.7	8198.0	8085.8	7919.3
BAJFINANCE	4118.7	Long Built-up	Up	4000	3800	4278.5	4177.4	4109.2	4076.6	4043.9	3975.7	3874.6
BHARTIARTL	387.1	Neutral	Neutral	400	370	405.4	396.2	390.0	387.0	384.0	377.8	368.5
BPLCL	514	Neutral	Neutral	520	400	547.0	530.3	519.0	513.6	508.2	496.9	480.2
BRITANNIA	3245.35	Neutral	Up	3300	3000	3358.5	3285.1	3235.7	3212.0	3188.4	3138.9	3065.5
CIPLA	447.45	Neutral	Neutral	440	400	464.0	455.9	450.5	447.9	445.3	439.9	431.8
COALINDIA	199.6	Short Covering	Up	200	190	205.5	201.4	198.7	197.4	196.0	193.3	189.2
DRREDDY	2728.35	Neutral	Neutral	2800	2600	2784.3	2751.5	2729.4	2718.9	2708.3	2686.2	2653.4
EICHERMOT	20584.7	Short Covering	Up	20000	19000	21193.9	20561.9	20135.8	19932.0	19728.1	19302.0	18670.0
GAIL	129.05	Neutral	Up	140	120	132.6	130.4	128.9	128.2	127.5	126.0	123.8
GRASIM	726.45	Neutral	Neutral	800	700	764.1	746.6	734.8	729.2	723.5	711.7	694.2
HCLTECH	1092.85	Short Built-up	Neutral	1100	1060	1126.0	1111.7	1102.0	1097.4	1092.8	1083.2	1068.9
HDFC	2090.25	Short Covering	Up	2200	2000	2140.1	2105.3	2081.9	2070.6	2059.4	2035.9	2001.1
HDFCBANK	1225.45	Neutral	Neutral	1300	1200	1269.5	1246.8	1231.4	1224.1	1216.8	1201.4	1178.7
HEROMOTOCO	2639.9	Neutral	Neutral	2800	2500	2751.3	2688.2	2645.6	2625.2	2604.8	2562.3	2499.1
HINDALCO	188.95	Neutral	Neutral	200	170	195.8	192.3	190.0	188.8	187.7	185.3	181.8
HINDUNILVR	2095.2	Neutral	Up	2100	2000	2147.7	2113.9	2091.2	2080.3	2069.4	2046.7	2012.9
ICICIBANK	441.8	Neutral	Neutral	460	400	459.9	449.4	442.3	439.0	435.6	428.5	418.0
INDUSINDBK	1340.7	Short Covering	Up	1400	1150	1399.6	1353.8	1322.9	1308.1	1293.4	1262.5	1216.7
INFRADEL	255.95	Neutral	Neutral	260	240	263.9	260.2	257.7	256.5	255.2	252.7	249.0
INFY	761.6	Neutral	Neutral	800	740	791.0	777.4	768.2	763.9	759.5	750.3	736.7
IOC	147.05	Neutral	Neutral	160	145	152.7	149.6	147.6	146.6	145.6	143.6	140.6
ITC	246.7	Neutral	Neutral	270	240	253.9	249.8	247.0	245.7	244.4	241.6	237.5
JSWSTEEL	223.9	Neutral	Up	240	220	232.0	227.1	223.7	222.1	220.5	217.1	212.2
KOTAKBANK	1609.6	Neutral	Neutral	1700	1600	1668.4	1638.8	1618.9	1609.4	1599.8	1579.9	1550.3
LT	1429.8	Neutral	Neutral	1500	1400	1487.7	1458.8	1439.3	1430.0	1420.6	1401.1	1372.2
M&M	593.35	Short Covering	Neutral	600	550	617.9	603.6	593.9	589.3	584.7	575.1	560.8
MARUTI	7150.65	Long Built-up	Up	7000	6000	7412.7	7240.0	7123.5	7067.8	7012.1	6895.7	6723.0
NESTLEIND	14524.15	Neutral	Up	14700	14000	14899.0	14672.7	14520.1	14447.1	14374.1	14221.5	13995.2
NTPC	119.05	Neutral	Up	120	115	121.7	120.1	119.0	118.5	118.0	117.0	115.4
ONGC	141.9	Neutral	Neutral	140	140	148.6	145.2	142.9	141.9	140.8	138.5	135.1
POWERGRID	198.45	Neutral	Neutral	200	195	204.3	201.6	199.8	198.9	198.0	196.2	193.5
RELIANCE	1399.6	Neutral	Up	1400	1200	1434.9	1411.8	1396.2	1388.8	1381.3	1365.7	1342.6
SBIN	265.55	Short Covering	Up	300	230	276.1	268.7	263.6	261.2	258.8	253.8	246.3
SUNPHARMA	402.45	Neutral	Neutral	420	400	413.7	407.8	403.8	401.9	400.0	396.1	390.2
TATAMOTORS	139.4	Short Covering	Up	140	120	143.8	138.3	134.6	132.9	131.1	127.4	121.9
TATASTEEL	357.55	Long Built-up	Up	400	300	370.9	361.7	355.5	352.5	349.5	343.3	334.1
TCS	2031.75	Short Covering	Up	2100	1900	2070.1	2044.4	2027.1	2018.9	2010.6	1993.3	1967.6
TECHM	728.45	Neutral	Neutral	740	700	747.2	738.3	732.4	729.5	726.6	720.7	711.8
TITAN	1279.65	Neutral	Neutral	1300	1200	1327.4	1302.4	1285.5	1277.5	1269.4	1252.5	1227.5
ULTRACEMCO	4272.05	Long Unwinding	Neutral	4400	4000	4483.1	4380.9	4311.9	4278.9	4245.9	4177.0	4074.7
UPL	594.1	Long Built-up	Neutral	600	580	610.7	601.6	595.4	592.5	589.5	583.4	574.2
VEDL	149	Short Built-up	Neutral	160	150	158.4	154.1	151.2	149.8	148.3	145.4	141.1
WIPRO	248.75	Long Unwinding	Neutral	260	240	255.0	252.1	250.1	249.2	248.2	246.3	243.4
YESBANK	47.55	Long Built-up	Up	50	40	52.4	48.4	45.7	44.4	43.1	40.4	36.4
ZEEL	263	Short Covering	Neutral	300	200	283.4	272.6	265.3	261.9	258.4	251.1	240.3

Research Team Tel: 022 – 71148579

E-mail: research@inventuregrowth.com

Website: [Inventuregrowth.com](http://www.inventuregrowth.com)

This Report is published by Inventure Growth & Securities Limited (hereinafter referred to as “IGSL”) for private circulation. IGSL is a registered Research Analyst under SEBI (Research Analyst) Regulations, 2014 having Registration no. INH000006129. IGSL is also a registered Stock Broker with National Stock Exchange of India Limited, BSE Limited and Metropolitan Stock Exchange of India Limited (MSE) in cash, F&O & currency derivatives segments. It is also registered as a Depository Participant with CDSL and is also registered with AMFI as a Mutual Fund Distributor

IGSL have not been debarred / suspended by SEBI for Retail & Institutional business or any other regulatory authority for accessing / dealing in securities Market other than PRO business. IGSL, its associates or analyst or his relatives may or may not hold any financial interest in the subject company. IGSL or its associates or Analyst do not have any conflict or material conflict of interest at the time of publication of the research report with the subject company. IGSL or its Affiliates may or may not have been beneficial ownership of one percent or more of the securities mentioned in this report. However, one or more of IGSL or its Affiliates may, from time to time, have a long or short position in any of the securities mentioned herein and may buy or sell those securities or options thereon, either on their own account.

IGSL or its associates / analyst has not received any compensation / managed or co-managed public offering of securities of the company covered by Analyst during the past twelve months. IGSL or its associates have not received any compensation or other benefits from the company covered by Analyst or third party in connection with the research report. Analyst has not served as an officer, director or employee of Subject Company and IGSL / analyst has not been engaged in market making activity of the subject company.

Analyst Certification: I/We, **Virat Jagad** the research analyst is the author of this report, hereby certify that the views expressed in this research report accurately reflects my/our personal views about the subject securities, issuers, products, sectors or industries. It is also certified that no part of the compensation of the analyst(s) was, is, or will be directly or indirectly related to the inclusion of specific recommendations or views in this research. The analyst(s) principally responsible for the preparation of this research report and has taken reasonable care to achieve and maintain independence and objectivity in making any recommendations.

Research Team	Profile	Email ID
Mr. Prashant Barwaliya	Head- Research	Prashant.b@inventuregrowth.com
Mr. Virat Jagad	Technical Analyst	
Ms. Jeni Rita	Fundamental Analyst	Jeni.rita@inventuregrowth.com

Created by: **IGSL - Research**
Inventure Growth & Securities Ltd, 201, Viraj Tower, Near Landmark Building,
Western Express Highway, Andheri (East), Mumbai - 400 093
Tele: 91-22-71148500 , Fax: 91-22-40751511.
E-mail: Research@inventuregrowth.com , website : <http://www.inventuregrowth.com>

DISCLAIMER

Inventure Growth and Securities Limited (hereinafter referred to as “IGSL”) is a registered Member of National Stock Exchange of India Limited, Bombay Stock Exchange Limited and Metropolitan Stock Exchange Limited. It is also registered as a Depository Participant with CDSL. It also has registration with AMFI as a Mutual Fund Distributor. Inventure Growth and Securities Limited is a registered entity with SEBI for Research Analyst in terms of SEBI (Research Analyst) Regulations, 2014 vide registration number INH000006129. IGSL has not been debarred/ suspended by SEBI or any other regulatory authority for accessing /dealing in securities Market. IGSL or its associates/ analyst has not received any compensation / managed or co-managed public offering of securities of the company covered by Analyst during the past twelve months.

This document is solely for the personal information of the recipient, and must not be singularly used as the basis of any investment decision. Nothing in this document should be construed as investment or financial advice. Each recipient of this document should make such investigations as they deem necessary to arrive at an independent evaluation of an investment in the securities of the companies referred to in this document (including the merits and risks involved), and should consult their own advisors to determine the merits and risks of such an investment. Reports based on technical and derivative analysis center on studying charts of a stock's price movement, outstanding positions and trading volume, as opposed to focusing on a company's fundamentals and, as such, may not match with a report on a company's fundamentals. Investors are advised to refer the Fundamental and Technical Research Reports available on our website to evaluate the contrary view, if any.

The information in this document has been printed on the basis of publicly available information, internal data and other reliable sources believed to be true, but we do not represent that it is accurate or complete and it should not be relied on as such, as this document is for general guidance only. Inventure Growth and Securities Limited or any of its affiliates/ group companies shall not be in any way responsible for any loss or damage that may arise to any person from any inadvertent error in the information contained in this report. Inventure Growth and Securities Limited has not independently verified all the information contained within this document. Accordingly, we cannot testify, nor make any representation or warranty, express or implied, to the accuracy, contents or data contained within this document. While Inventure Growth and Securities Limited endeavors to update on a reasonable basis the information discussed in this material, there may be regulatory, compliance, or other reasons that prevent us from doing so. This document is being supplied to you solely for your information, and its contents, information or data may not be reproduced, redistributed or passed on, directly or indirectly.

Neither Inventure Growth and Securities Limited , nor its directors, employees or affiliates shall be liable for any loss or damage that may arise from or in connection with the use of this information.