

# Market Insight

14<sup>th</sup> March, 2019

NSE Indices	Curr Close	Points Chg	Chg %
NIFTY	11341.7	40.5	0.36
NIFTY 100	11527.2	27.25	0.24
NIFTY 500	9450.25	9.4	0.1
NIFTY MIDCAP	17733.45	-98.5	-0.55
INDIA VIX	15.2775	0.18	1.19

BSE Indices	Curr Close	Points Chg	Chg %
SENSEX	37752.17	216.51	0.58
BSE 100	11553.12	33.54	0.29
BSE200	4796.56	10.38	0.22
BSE 500	14973.72	24.35	0.16
BSE MID CAP	15127.93	-64.91	-0.43
BSE SMALL CAP	14874.69	-45.81	-0.31

Sectorial Indices	Curr Close	Points Chg	Chg %
NIFTY AUTO	8767.55	-35.35	-0.4
NIFTY FIN SERVICE	12034.15	138.7	1.17
NIFTY FMCG	30451.6	-29.2	-0.1
NIFTY IT	15342.9	-41.65	-0.27
NIFTY MEDIA	2482.65	-51.8	-2.04
NIFTY METAL	2985.75	-57.3	-1.88
NIFTY PHARMA	9100.25	-174.55	-1.88
NIFTY PSU BANK	3050.6	49.35	1.64
NIFTY PVT BANK	16463.25	205.35	1.26
NIFTY REALTY	246.35	1.45	0.59
NIFTY COMMODITIES	3499.7	-33.55	-0.95
NIFTY CONSUMPTION	4905.95	-27.05	-0.55
NIFTY CPSE	2126.85	-34.95	-1.62
NIFTY ENERGY	16041.8	50.65	0.32
NIFTY INFRA	3142.65	-26.1	-0.82
NIFTY MNC	13407.35	-109.65	-0.81
NIFTY SERV SECTOR	15593	120.85	0.78
NIFTY PSE	3443.35	-33.05	-0.95
NIFTY BANK	28884.3	440.6	1.55

Nifty 50 Top 3 Gainers	Curr Close	Points Chg	Chg %
INDUSIND BANK	1636.35	67.3	4.29
YES BANK LTD	244.3	8.45	3.58
BAJAJ FINANCE LT	2828.15	75.1	2.73

Nifty 50 Top 3 Losers	Curr Close	Points Chg	Chg %
LUPIN LTD	763.3	-37.3	-4.66
BHARTI AIRTEL	337.75	-14.05	-3.99
INDIAN OIL CORP	148.75	-5.35	-3.47

Exchange	Advance	Decline	Unchg
NSE	609	1132	336
BSE	1056	1678	155

## Market Wrap

Indian shares rose for a third straight session on Wednesday, with a surging rupee on the back of strong foreign fund inflows and hopes of another RBI rate cut in April bolstering investor sentiment.

The benchmark BSE Sensex ended the session up by 216.51 points or 0.58 percent at 37,752.17 while the broader Nifty index rose 40.50 points or 0.36 percent to 11,341.70.

The Sensex and Nifty have climbed around 3 percent over the past three sessions amid expectations that Prime Minister Narendra Modi will win a second term in the upcoming national elections.

Financials led the surge, with SBI, HDFC Bank, Bajaj Finance, Yes Bank and IndusInd Bank climbing 2-4 percent.

On the flip side, Vedanta, Sun Pharma, Zee Entertainment Enterprises, IOC and Bharti Airtel dropped 2-4 percent.

## Technical View



Nifty extend gains For third day and hit fresh six-month high to end the session at 11,341.70, a gain of 40.50 points from previous close.

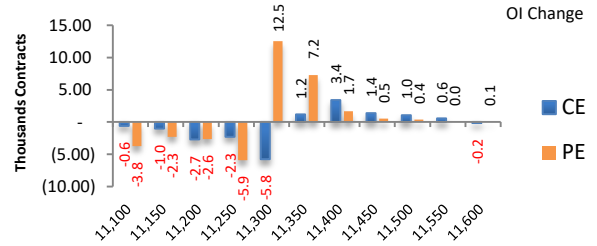
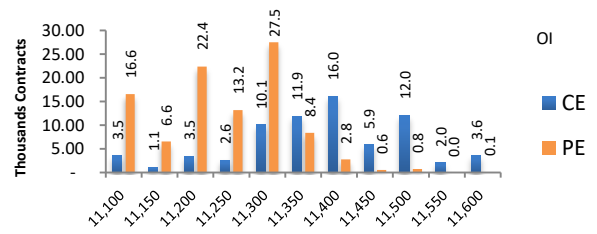
Overall yesterday's session was a consolidation day with weaker market breath on NSE. Nifty formed 'Hanging Man' kind of pattern on the daily charts. This pattern indicates caution for long positions at the highs. But, confirmation of weakness is required to call this as a reversal.

For short term support can be seen near 11180 and 11070 levels. While resistance can be seen near 11390 and 11525 levels.

## Nifty Derivative Activity

Index	NIFTY	Change
Fut Closing	11366.65	0.3%
Prem /Disc	24.95	-10.70
OI Qty	2.04 cr.	19.6%
Nifty PCR	1.58	
Highest OI	11500 CE	11000 PE

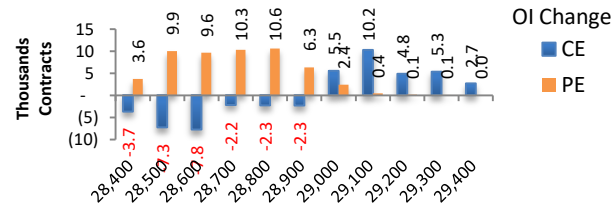
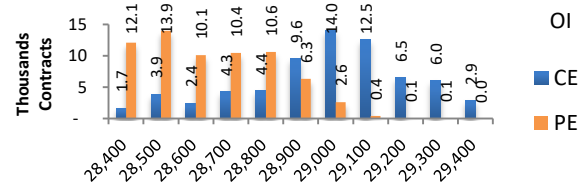
- Yesterday NIFTY future was up 0.26% with increase in O I by 19.59%.
- Put O I addition was seen at 11300 followed by 11350 which can act as short term support
- Call O I reduction was seen at 11300 followed by 11200.



## Bank Nifty Derivative Activity

Index	BANKNIFTY	Change
Fut Closing	28938.8	1.4%
Prem/Disc	54.50	-29.90
OI Qty	1.09 cr.	29.4%
Highest OI	27500 CE	27000 PE

- Yesterday BANKNIFTY future was up 1.44% with increase in O I by 29.42%.
- Put O I addition was seen at 28800 followed by 28700 which can act as short term support.
- Call O I addition was seen at 29100 followed by 29000 which can act as short term resistance.

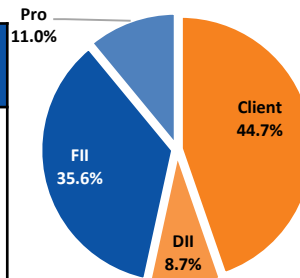


## Participants wise OI Activity

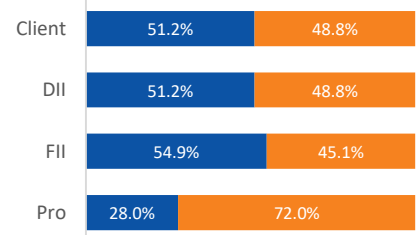
Participant wise OI Activity ( Fig in '000 Contracts)

Participant Type	Index Fut Activity	Call Activity	Put Activity
Client	-18.6	-0.4	36.7
DII	-1.8	0.0	0.0
FII	23.3	2.9	-16.8
Pro	-2.9	-2.5	-19.9

Index Future OI %



Future Index Long Future Index Short



- Yesterday, FII had added Long 23.3K Contracts in Index Futures and Clients had added Short 18.6K Contracts
- FII had added Call Long by 2.9K Contracts and added Put Short by 16.8K Contracts
- Clients had added Call Short by 0.4K Contracts and added Put Long by 36.7K Contracts

## Market Buzz

- **TCS' ignio™ Powers IT Transformation at Tata Steel Europe.** It announced that Digitate's cognitive automation solution, ignio™, has been successfully deployed by Tata Steel Europe (TSE) as its AI platform for IT operations. TSE, a leading European steel producer.
- **Zydus Cadila gets USFDA nod to market Potassium Chloride capsules.** Zydus Cadila said the newly-approved product will be manufactured at the group's formulations manufacturing facility at SEZ, Ahmedabad.
- **Lupin:** USFDA classifies the inspection at the company's Mandideep (Unit 1) facility as 'Official Action Indicated'.
- **Satin Creditcare Network:** CARE revised its rating on the company's commercial paper to A2+ from A1.
- **Bajaj Consumer Care:** Company engaged the services of Bain & Company which will help the company in formulating a front-end strategy for growth and also help in implementing it.
- **Sun Pharma:** Subsidiary increased its stake in PJSC Biosintez, Russia to 96.96 percent from 85.10 percent earlier.
- **GE T&D India:** Company received a technology-driven grid modernization project from Rajasthan Rajya Vidyut Prasaran Nigam Limited (RRVPL).
- **Wipro:** Chairman Azim Premji has earmarked another 34 percent of his equity in Wipro worth Rs 52,750 crore towards Azim Premji Foundation.
- **Unichem Labs:** USFDA approved the company's ANDA for Allopurinol tablets, USP 100 mg and 300 mg.
- **Essel Propack:** Company redeemed commercial papers amounting to Rs 50 crore and Rs 35 crore.
- **Deep Industries:** Company received 2 orders from ONGC in the rigs segment valued at around Rs 183.50 crore.
- **Sicagen India:** Company made additional investment to the extent of SGD 1 million in subsidiary Wilson Cable Private Limited, Singapore.
- **HCL Technologies:** Company to acquire Strong-Bridge Envision (SBE), a digital transformation consulting firm with offices in Seattle, Denver, Atlanta, and New York City.
- **IOC:** Company has fixed March 28 as the record date for payment of 2nd interim dividend, if declared, at the board meeting scheduled on March 19.
- **Jet Airways:** Additional five aircraft have been grounded due to non-payment of amounts outstanding to lessors under their respective lease agreements.
- **DCM Shriram:** Company commissioned its 30 MW power plant at DSCL Sugar Hariawan Unit.
- **Alembic Pharma** seeks to raise up to INR1.5B via bonds.
- **NHPC** to consider fund raising of \$100M in JPY equivalent. It is to consider fund raising in March 15 board meet.
- **Unichem Laboratories** rises 2% on USFDA approval. The company has received ANDA approval for its Allopurinol Tablets, USP 100 mg and 300 mg from the US FDA to market a generic version of ZYLOPRIM (allopurinol) tablet.
- **Bajaj Consumer** founder cuts stake to 59.91% from 66.76%.
- **Spicejet** cancels 14 flights wednesday on b737 max grounding.

## Nifty 50 Daily Volatility Levels

Symbol	Futures Close	O I Activity	Trend	Highest Call OI	Highest Put OI	R3	R2	R1	Mid Point	S1	S2	S3
BANKNIFTY	28938.8	Long Built-up	Up	27500	27000	29217.0	28974.9	28811.6	28733.5	28655.3	28492.0	28249.9
NIFTY	11366.65	Neutral	Neutral	11500	11000	11506.7	11429.1	11376.8	11351.8	11326.7	11274.4	11196.8
ADANIPTS	368.45	Long Built-up	Neutral	380	330	384.5	375.1	368.8	365.8	362.8	356.4	347.1
ASIANPAINT	1436	Neutral	Neutral	1440	1400	1465.3	1450.6	1440.6	1435.8	1431.1	1421.1	1406.3
AXISBANK	741.7	Neutral	Neutral	760	700	763.9	753.6	746.6	743.3	740.0	733.1	722.8
BAJAJ-AUTO	3006.2	Neutral	Neutral	3000	2900	3065.2	3032.4	3010.3	2999.7	2989.1	2967.0	2934.2
BAJAJFINSV	6931.4	Neutral	Neutral	6750	6250	7093.1	6998.2	6934.2	6903.6	6873.0	6809.0	6714.1
BAJFINANCE	2840.85	Long Built-up	Up	2900	2700	2888.1	2846.5	2818.5	2805.1	2791.7	2763.7	2722.2
BHARTIARTL	339.65	Long Unwinding	Down	360	320	363.5	354.6	348.6	345.8	342.9	336.9	328.0
BPCL	389.75	Neutral	Neutral	400	360	406.5	398.1	392.4	389.7	387.0	381.4	373.0
CIPLA	534.7	Short Built-up	Down	550	540	548.8	543.5	539.9	538.2	536.5	532.9	527.6
COALINDIA	230.25	Neutral	Down	250	220	240.9	236.8	234.1	232.8	231.5	228.7	224.7
DRREDDY	2662.4	Neutral	Neutral	2800	3000	2749.2	2709.9	2683.5	2670.8	2658.1	2631.7	2592.4
EICHERMOT	22746.45	Neutral	Neutral	25000	20000	23719.3	23168.8	22797.6	22620.0	22442.4	22071.3	21520.7
GAIL	352.45	Neutral	Neutral	370	320	363.6	358.7	355.5	353.9	352.4	349.1	344.3
GRASIM	825.85	Neutral	Down	840	820	857.1	843.6	834.6	830.3	825.9	816.9	803.4
HCLTECH	1029.9	Short Covering	Up	1060	1020	1048.6	1036.1	1027.7	1023.7	1019.7	1011.3	998.8
HDFC	1953.05	Neutral	Up	1950	1850	1986.3	1965.8	1952.0	1945.4	1938.7	1924.9	1904.4
HDFCBANK	2227.75	Long Built-up	Up	2240	2100	2250.0	2227.5	2212.2	2205.0	2197.7	2182.5	2159.9
HEROMOTOCO	2813.1	Neutral	Neutral	2900	2600	2917.9	2868.1	2834.5	2818.4	2802.4	2768.8	2719.0
HINDALCO	202.85	Neutral	Neutral	210	190	209.9	206.6	204.5	203.4	202.4	200.2	197.0
HINDPETRO	266.4	Neutral	Up	280	250	276.6	270.4	266.2	264.3	262.3	258.1	251.9
HINDUNILVR	1752.75	Neutral	Up	1760	1700	1777.1	1762.4	1752.4	1747.6	1742.9	1732.9	1718.1
IBULHSGFIN	705.7	Neutral	Down	750	700	759.0	736.7	721.7	714.5	707.3	692.3	670.1
ICICIBANK	391.95	Long Built-up	Up	400	350	401.7	395.8	391.8	389.9	388.0	384.0	378.0
INDUSINDBK	1633.6	Long Built-up	Up	1550	1450	1658.4	1631.9	1614.1	1605.5	1597.0	1579.1	1552.7
INFRADEL	314.7	Neutral	Neutral	320	300	329.8	322.9	318.3	316.1	313.8	309.2	302.3
INFY	712.4	Neutral	Neutral	760	700	728.2	720.0	714.4	711.8	709.1	703.6	695.3
IOC	146.8	Short Built-up	Down	160	140	156.9	153.4	151.1	150.0	148.9	146.5	143.1
ITC	296.45	Neutral	Neutral	300	260	301.9	299.1	297.2	296.4	295.5	293.6	290.8
JSWSTEEL	287.4	Long Unwinding	Down	300	280	300.6	295.3	291.8	290.1	288.3	284.8	279.5
KOTAKBANK	1266.9	Neutral	Neutral	1300	1220	1293.4	1279.7	1270.4	1266.0	1261.6	1252.4	1238.7
LT	1383.7	Neutral	Neutral	1400	1280	1423.8	1406.0	1394.0	1388.3	1382.5	1370.5	1352.7
M&M	685.95	Long Unwinding	Neutral	700	620	705.3	696.4	690.4	687.5	684.6	678.6	669.7
MARUTI	7120.15	Neutral	Down	7500	7000	7366.0	7260.9	7190.0	7156.1	7122.2	7051.4	6946.2
NTPC	147.45	Long Unwinding	Down	160	150	154.4	151.8	150.1	149.3	148.5	146.8	144.2
ONGC	148.35	Short Built-up	Down	160	150	155.4	152.6	150.7	149.9	149.0	147.1	144.3
POWERGRID	189.35	Long Unwinding	Down	200	185	195.2	192.7	191.1	190.3	189.5	187.8	185.3
RELIANCE	1350.65	Short Covering	Up	1300	1200	1380.9	1362.0	1349.3	1343.2	1337.1	1324.3	1305.4
SBIN	294	Long Built-up	Up	300	280	298.4	294.7	292.2	291.0	289.8	287.3	283.7
SUNPHARMA	457.35	Long Unwinding	Down	480	440	482.4	473.5	467.5	464.7	461.8	455.8	446.9
TATAMOTORS	182.45	Long Unwinding	Neutral	200	180	196.0	190.0	186.0	184.0	182.1	178.0	172.0
TATASTEEL	516.65	Long Unwinding	Down	530	480	540.0	530.6	524.3	521.3	518.3	512.0	502.6
TCS	2005.4	Short Built-up	Neutral	2100	1900	2066.8	2039.6	2021.3	2012.5	2003.7	1985.4	1958.2
TECHM	794.45	Short Built-up	Down	820	800	825.4	813.7	805.7	802.0	798.2	790.2	778.5
TITAN	1081.5	Long Unwinding	Neutral	1100	1000	1111.6	1098.4	1089.5	1085.3	1081.1	1072.2	1059.0
ULTRACEMCO	4045.4	Short Built-up	Down	4200	3700	4208.5	4140.9	4095.3	4073.5	4051.6	4006.0	3938.4
UPL	915.15	Long Built-up	Up	940	860	929.9	919.5	912.5	909.1	905.7	898.7	888.3
VEDL	172.55	Short Built-up	Down	180	170	184.9	179.9	176.6	175.0	173.4	170.0	165.1
WIPRO	259.15	Long Unwinding	Neutral	300	255	270.3	265.4	262.1	260.6	259.0	255.7	250.9
YESBANK	245.6	Long Built-up	Up	250	200	261.1	251.2	244.4	241.2	238.0	231.3	221.3
ZEEL	450.85	Long Unwinding	Down	500	450	493.3	475.7	463.8	458.1	452.4	440.5	422.8

## DISCLOSURES

Research Team Tel: 022 – 71148579

E-mail: [research@inventuregrowth.com](mailto:research@inventuregrowth.com)

Website: [Inventuregrowth.com](http://Inventuregrowth.com)

This Report is published by Inventure Growth & Securities Limited (hereinafter referred to as “IGSL”) for private circulation. IGSL is a registered Research Analyst under SEBI (Research Analyst) Regulations, 2014 having Registration no. INH000006129. IGSL is also a registered Stock Broker with National Stock Exchange of India Limited, BSE Limited and Metropolitan Stock Exchange of India Limited (MSE) in cash, F&O & currency derivatives segments. It is also registered as a Depository Participant with CDSL and is also registered with AMFI as a Mutual Fund Distributor

IGSL have not been debarred / suspended by SEBI for Retail & Institutional business or any other regulatory authority for accessing / dealing in securities Market other than PRO business. IGSL, its associates or analyst or his relatives may or may not hold any financial interest in the subject company. IGSL or its associates or Analyst do not have any conflict or material conflict of interest at the time of publication of the research report with the subject company. IGSL or its Affiliates may or may not have been beneficial ownership of one percent or more of the securities mentioned in this report. However, one or more of IGSL or its Affiliates may, from time to time, have a long or short position in any of the securities mentioned herein and may buy or sell those securities or options thereon, either on their own account.

IGSL or its associates / analyst has not received any compensation / managed or co-managed public offering of securities of the company covered by Analyst during the past twelve months. IGSL or its associates have not received any compensation or other benefits from the company covered by Analyst or third party in connection with the research report. Analyst has not served as an officer, director or employee of Subject Company and IGSL / analyst has not been engaged in market making activity of the subject company.

**Analyst Certification:** I/We, **Smeet Gala** the research analyst is the author of this report, hereby certify that the views expressed in this research report accurately reflects my/our personal views about the subject securities, issuers, products, sectors or industries. It is also certified that no part of the compensation of the analyst(s) was, is, or will be directly or indirectly related to the inclusion of specific recommendations or views in this research. The analyst(s) principally responsible for the preparation of this research report and has taken reasonable care to achieve and maintain independence and objectivity in making any recommendations.

Research Team	Profile	Email ID
Mr. Prashant Barwaliya	Head- Research	Prashant.b@inventuregrowth.com
Mr. Smeet Gala	Fundamental Analyst	Smeet.Gala@Inventuregrowth.com

**Created by:** **IGSL - Research**  
Inventure Growth & Securities Ltd, 201, Viraj Tower, Near Landmark Building,  
Western Express Highway, Andheri (East), Mumbai -400 093  
Tele: 91-22-71148500 , Fax: 91-22-40751511.  
E-mail: [Research@inventuregrowth.com](mailto:Research@inventuregrowth.com) , website : <http://www.inventuregrowth.com>

## DISCLAIMER

Inventure Growth and Securities Limited (hereinafter referred to as “IGSL”) is a registered Member of National Stock Exchange of India Limited, Bombay Stock Exchange Limited and Metropolitan Stock Exchange Limited. It is also registered as a Depository Participant with CDSL. It also has registration with AMFI as a Mutual Fund Distributor. Inventure Growth and Securities Limited is a registered entity with SEBI for Research Analyst in terms of SEBI (Research Analyst) Regulations, 2014 vide registration number INH000006129. IGSL has not been debarred/ suspended by SEBI or any other regulatory authority for accessing /dealing in securities Market. IGSL or its associates/ analyst has not received any compensation / managed or co-managed public offering of securities of the company covered by Analyst during the past twelve months.

This document is solely for the personal information of the recipient, and must not be singularly used as the basis of any investment decision. Nothing in this document should be construed as investment or financial advice. Each recipient of this document should make such investigations as they deem necessary to arrive at an independent evaluation of an investment in the securities of the companies referred to in this document (including the merits and risks involved), and should consult their own advisors to determine the merits and risks of such an investment. Reports based on technical and derivative analysis center on studying charts of a stock's price movement, outstanding positions and trading volume, as opposed to focusing on a company's fundamentals and, as such, may not match with a report on a company's fundamentals. Investors are advised to refer the Fundamental and Technical Research Reports available on our website to evaluate the contrary view, if any.

The information in this document has been printed on the basis of publicly available information, internal data and other reliable sources believed to be true, but we do not represent that it is accurate or complete and it should not be relied on as such, as this document is for general guidance only. Inventure Growth and Securities Limited or any of its affiliates/ group companies shall not be in any way responsible for any loss or damage that may arise to any person from any inadvertent error in the information contained in this report. Inventure Growth and Securities Limited has not independently verified all the information contained within this document. Accordingly, we cannot testify, nor make any representation or warranty, express or implied, to the accuracy, contents or data contained within this document. While Inventure Growth and Securities Limited endeavors to update on a reasonable basis the information discussed in this material, there may be regulatory, compliance, or other reasons that prevent us from doing so. This document is being supplied to you solely for your information, and its contents, information or data may not be reproduced, redistributed or passed on, directly or indirectly.

Neither Inventure Growth and Securities Limited , nor its directors, employees or affiliates shall be liable for any loss or damage that may arise from or in connection with the use of this information.