

NSE Indices	Curr Close	Points Chg	Chg %
NIFTY	10855.15	53	0.49
NIFTY 100	11078	46.7	0.42
NIFTY 500	9127.45	28.8	0.32
NIFTY MIDCAP	17621.3	-13.1	-0.07
INDIA VIX	15.27	-0.43	-2.74

BSE Indices	Curr Close	Points Chg	Chg %
SENSEX	36212.91	231.98	0.64
BSE 100	11128.57	47.21	0.43
BSE200	4633.77	16.72	0.36
BSE 500	14470.17	44.6	0.31
BSE MID CAP	15121.6	-5.62	-0.04
BSE SMALL CAP	14600.97	-24.14	-0.17

Sectorial Indices	Curr Close	Points Chg	Chg %
NIFTY AUTO	8907.1	47.45	0.54
NIFTY FIN SERVICE	11740.75	105.3	0.9
NIFTY FMCG	30577.35	305.35	1.01
NIFTY IT	14326.1	40.4	0.28
NIFTY MEDIA	2494.95	-0.95	-0.04
NIFTY METAL	2975.5	-34.8	-1.16
NIFTY PHARMA	8906.7	41.95	0.47
NIFTY PSU BANK	3187.4	-7.9	-0.25
NIFTY PVT BANK	15665.55	145.05	0.93
NIFTY REALTY	240.55	1.55	0.65
NIFTY COMMODITIES	3310.8	-35.05	-1.05
NIFTY CONSUMPTION	4923.7	26.05	0.53
NIFTY CPSE	2024.15	-14.5	-0.71
NIFTY ENERGY	14061	-45.35	-0.32
NIFTY INFRA	3145.8	0.1	0
NIFTY MNC	13622.35	15.55	0.11
NIFTY SERV SECTOR	15073.65	96.9	0.65
NIFTY PSE	3295.95	-41.65	-1.25
NIFTY BANK	27720.4	210.9	0.77

Nifty 50 Top 3 Gainers	Curr Close	Points Chg	Chg %
AXIS BANK LTD	670.1	19.2	2.95
ITC LTD	290.4	6.15	2.16
HOUSING DEV FIN	1994.95	36	1.84

Nifty 50 Top 3 Losers	Curr Close	Points Chg	Chg %
GAIL INDIA LTD	341.35	-13.25	-3.74
HINDUSTAN PETRO	239	-8.95	-3.61
BHARAT PETROL	340.05	-11.9	-3.38

Exchange	Advance	Decline	Unchg
NSE	701	1009	356
BSE	1141	1453	153

Market Wrap

Indian shares extended their winning streak for the fourth straight session on Wednesday, tracking positive global cues as talks between the United States and China extended for a third day.

Investors also cheered a World Bank report suggesting that India will retain its position as the fastest growing major economy in 2019-20.

The benchmark 30-share BSE Sensex hit as low as 35,863.29 before recovering to finish the session higher by 231.98 points or 0.64 percent at 36,212.91. The broader Nifty index rose by 53 points or 0.49 percent to 10,855.15.

HDFC, UPL, Tata Motors, ITC and Axis Bank rallied 2-3 percent in the Nifty pack, while UltraTech, Yes Bank, BPCL, GAIL and HPCL tumbled 3-4 percent.

HT Media surged 20 percent and DB Corp jumped 7.4 percent after the Ministry of Information & Broadcasting announced a hike of 25 percent over the existing rate structure for advertisements in print media. R Systems International soared 11 percent on share buyback news.

Globally, stocks rose across the board and European after U.S. President Donald Trump said in a tweet that discussions between the world's two largest economies were "going very well." Investors are optimistic that a trade deal can be struck ahead of a March 1 deadline.

Technical View



Gap up opening of 60 points was witnessed in yesterday's session as Nifty started day at 10862 levels. Earlier, sentiments was boosted by strong Asian market as investor wait for the outcome of meeting between US and China. Market after testing high of 10870 levels in early trade remain in volatile range and even slipped to low of 10749 before settling with gain of 53 points at 10855.

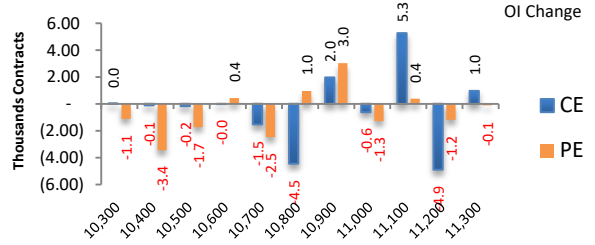
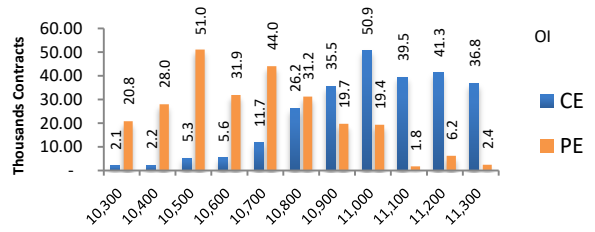
Index recovered sharply from intraday low of 10749 in last hour and close higher for second consecutive day. Yesterday's price action has formed Long Legged Doji candle which indicates value buying at lower levels. Price still failed to break higher band of triangle pattern and close near 100 DMA which is at 10867 levels.

Till price does not break this triangle pattern decisively expect market to remain volatile and choppy. Expect short covering to emerge above breakout levels which could even carry price to high of 11070 and 11140 levels. Immediate resistance is at 10880 and 10930 levels and on downside supports are at 10770 and 10720.

Nifty Derivative Activity

Index	NIFTY	Change
Fut Closing	10877.7	0.3%
Prem /Disc	22.55	-19.95
OI Qty	2.66 cr.	1.4%
Nifty PCR	1.14	
Highest OI	11000 CE	10500 PE

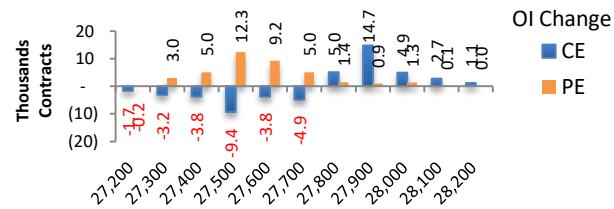
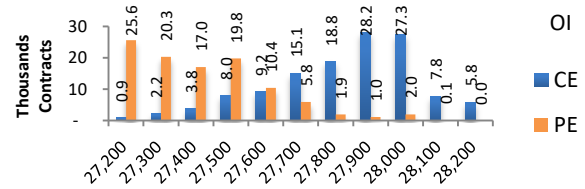
- Yesterday NIFTY future was up 0.3% with increase in OI by 1.39%.
- Put OI Reduction was seen at 10700 followed by 10400 and Call OI reduction was seen at 11200 followed by 10800.
- As per current option data Immediate Resistance & Major Resistance is around 11000.
- As per current option data Immediate Support is around 10700 & Major Support is around 10500.



Bank Nifty Derivative Activity

Index	BANKNIFTY	Change
Fut Closing	27751.55	0.5%
Prem/Disc	31.15	-61.95
OI Qty	0.81 cr.	36.0%
Highest OI	27900 CE	27200 PE

- Yesterday BANKNIFTY future was up 0.54% with increase in OI by 36.02%.
- Put OI addition was seen at 27500 followed by 27600 which can act as short term support.
- Call OI addition was seen at 27900 followed by 27800 which can act as short term resistance.

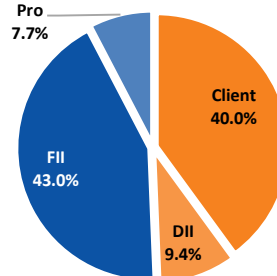


Participants wise OI Activity

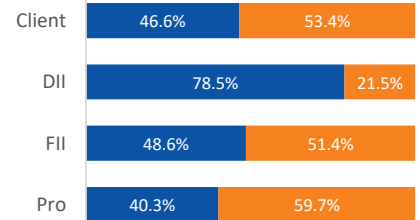
Participant wise OI Activity (Fig in '000 Contracts)

Participant Type	Index Fut Activity	Call Activity	Put Activity
Client	3.1	-3.0	21.2
DII	-3.9	0.0	0.0
FII	3.7	8.1	16.4
Pro	-3.0	-5.0	-37.6

Index Future OI %



Future Index Long Future Index Short



- Yesterday, FII had added Long 3.7K Contracts in Index Futures and Clients had done Short Covering of 3.1K Contracts
- FII had added Call Long by 8.1K Contracts and added Put Long by 16.4K Contracts
- Clients had added Call Short by 3K Contracts and added Put Long by 21.2K Contracts

Market Buzz

- **IndusInd Bank Third Quarter Net Income Beats Estimates**, IndusInd Bank reported net income for the third quarter that beat the average analyst estimate. 3Q net income 9.85 billion rupees, estimate 8.25 billion, Gross non-performing assets 1.13%, 3Q provisions 6.1 billion rupees, 3Q other income 14.7 billion rupees.
- **Sri Lanka Cenbank Says RBI Agrees \$400M Swap**, The Reserve Bank of India has agreed to provide \$400 million to the Central Bank of Sri Lanka under its Saarc swap facility to help boost reserves, Sri Lanka central bank says in a statement Sri Lanka central bank says has also requested a further bilateral swap arrangement of \$1 billion with RBI, which is under consideration. "The RBI's very rapid and timely assistance will serve to boost investor confidence by supporting Sri Lanka to maintain an adequate level of external reserves while accommodating outflows related to imports, debt servicing and, if necessary, support for the currency to avoid disorderly adjustment," Sri Lanka central bank says
- **Yes Bank Finalizes CEO Candidates, to Seek RBI Approval**, Yes Bank Ltd. will submit an application to the Reserve Bank of India Jan. 10, seeking the regulator's approval for appointment of the new CEO, the lender says in a statement, without naming the candidates.
- **Bajaj Corp Third Quarter Profit Beats Estimates**, Bajaj Corp reported net income for the third quarter that beat the average analyst estimate. 3Q net income 601 million rupees, estimate 569.0 million, 3Q revenue 2.22 billion rupees, estimate 2.24 billion To pay 14 rupees/share as interim dividend for FY19.
- **Delta Corp Limited's** consolidated revenue for the quarter came in at Rs205.81cr, up 26.9% yoy. EBITDA for Q3FY19 came in at Rs84.02cr, up 22.3% yoy. However, the EBITDA margin contracted by ~154bps yoy to 40.8% during the quarter. The adjusted net profit (attributable to the shareholders) increased by 12.9% yoy to Rs50.53cr during Q3FY19. The revenue, EBITDA and net profit are in-line with the consensus estimates.
- **Ashok Leyland** bagged orders for 2,580 buses from three state transport undertakings. The company also acquired 12.5 percent additional stake in Ashley Aviation for Rs 25.5 lakh, to increase its holding to 88.75 percent.
- **Adani Enterprises**: Government of Andhra Pradesh signed a memorandum of understanding with Adani Group to build Data Center Parks up to 5GW capacities over the next twenty years. Adani Group says that it will invest over Rs 70,000 crore over the afore mentioned time frame.
- **HUDCO** Loan Sanctions (Dec. 31) were up 2.4 times at Rs 12,116 crore versus Rs 5107 crore on a year to date basis, while loan releases up 66 percent at Rs 18,850 crore versus Rs 7,743 crore.
- Government of India is expected to cut levies on **real estate** and exempt some small businesses from paying goods and services tax on Jan. 10. Prime Minister Narendra Modi also proposed slashing rates on under-construction apartments to 5 percent from 12 percent.
- **AGC Networks'** Singapore arm completed the acquisition of the U.S. based digital solutions provider 'Black Box Corporation'. The company said the combined entity will add \$600 million to the company's revenue and strengthen its presence across 25 plus countries.
- **Tata Steel BSL** board approved issuing non-convertible redeemable preference shares up to Rs 12,000 crore and/or issue convertible preference shares up to Rs 12,000 crore to **Tata Steel**.
- **Vakrangee** said that no irregularities were made in the Preliminary Findings reported by the Ministry of Corporate Affairs. But some observations were made in such findings such as whether funds from Franchisee to be considered as Deposits or not and certain disclosure requirement with respect to financials as per Schedule III of the Companies Act, 2013. The company stated that after they give these explanations then Ministry of Corporate Affairs will release the final report.
- **Key Earnings To Watch**
 - Tata Consultancy Services
 - Bandhan Bank
 - Goa Carbon

Nifty 50 Daily Volatility Levels

Symbol	Futures Close	O I Activity	Trend	Highest Call OI	Highest Put OI	R3	R2	R1	Mid Point	S1	S2	S3
BANKNIFTY	27751.55	Long Built-up	Up	27000	27500	28128.6	27902.5	27750.0	27677.1	27604.1	27451.7	27225.6
NIFTY	10877.7	Neutral	Neutral	11000	10500	11036.7	10948.8	10889.5	10861.2	10832.8	10773.6	10685.7
ADANIPTS	379.5	Neutral	Neutral	400	360	393.5	386.9	382.5	380.4	378.2	373.8	367.2
ASIANPAINT	1409.2	Neutral	Neutral	1420	1360	1446.2	1427.2	1414.3	1408.2	1402.0	1389.2	1370.1
AXISBANK	670.8	Short Covering	Up	700	600	684.3	672.9	665.3	661.6	657.9	650.3	638.9
BAJAJ-AUTO	2702.05	Neutral	Neutral	2800	3000	2780.9	2741.9	2715.7	2703.1	2690.5	2664.2	2625.2
BAJAJFINSV	6433.95	Neutral	Neutral	6500	6000	6663.1	6558.7	6488.3	6454.7	6421.0	6350.6	6246.3
BAJFINANCE	2537.1	Short Built-up	Neutral	2700	2400	2623.1	2583.7	2557.2	2544.5	2531.7	2505.2	2465.8
BHARTIARTL	335.7	Neutral	Up	340	320	346.7	339.8	335.1	332.9	330.6	325.9	319.0
BPCL	337.85	Short Built-up	Down	360	350	357.6	350.6	345.8	343.6	341.3	336.6	329.6
CIPLA	512.95	Short Built-up	Neutral	530	500	527.2	521.0	516.9	514.9	512.9	508.7	502.5
COALINDIA	233.45	Neutral	Neutral	250	220	240.1	237.1	235.0	234.1	233.1	231.0	228.0
DRREDDY	2616.2	Short Covering	Up	2750	3000	2673.6	2637.3	2612.9	2601.2	2589.5	2565.0	2528.8
EICHERMOT	20373.6	Short Covering	Neutral	23000	20000	21252.3	20746.9	20406.2	20243.2	20080.2	19739.5	19234.2
GAIL	341.85	Short Built-up	Down	370	330	359.6	353.6	349.6	347.7	345.7	341.7	335.7
GRASIM	837.25	Neutral	Neutral	840	800	866.6	852.6	843.1	838.6	834.0	824.5	810.5
HCLTECH	941.15	Neutral	Neutral	1000	920	973.2	958.8	949.1	944.5	939.9	930.2	915.8
HDFC	1998.3	Long Built-up	Up	2000	1900	2042.4	2013.1	1993.4	1984.0	1974.5	1954.8	1925.5
HDFCBANK	2121	Long Built-up	Neutral	2200	2100	2154.9	2135.7	2122.8	2116.6	2110.4	2097.5	2078.3
HEROMOTOCO	2951.05	Neutral	Down	3200	2800	3071.8	3019.9	2984.9	2968.1	2951.4	2916.4	2864.5
HINDALCO	206.8	Neutral	Neutral	220	210	214.8	211.0	208.5	207.3	206.1	203.6	199.8
HINDPETRO	237.65	Neutral	Down	260	240	252.9	247.4	243.7	241.9	240.1	236.4	230.9
HINDUNILVR	1794.8	Long Built-up	Up	1840	1700	1826.6	1806.9	1793.6	1787.3	1780.9	1767.6	1747.9
IBULHSGFIN	818.9	Neutral	Neutral	900	800	868.2	842.4	825.0	816.7	808.3	790.9	765.1
ICICIBANK	381.95	Long Built-up	Neutral	370	350	391.6	386.4	382.9	381.2	379.5	376.0	370.8
INDUSINDBK	1608.4	Long Built-up	Up	1600	1500	1639.5	1618.1	1603.7	1596.8	1589.9	1575.4	1554.0
INFRADEL	291.5	Long Unwinding	Down	280	270	306.5	301.0	297.4	295.6	293.8	290.2	284.7
INFY	675.3	Neutral	Neutral	700	620	693.3	683.8	677.5	674.4	671.4	665.0	655.6
IOC	132.65	Neutral	Down	140	140	138.8	136.3	134.6	133.8	133.0	131.2	128.7
ITC	290.95	Long Built-up	Up	310	260	294.1	291.1	289.0	288.0	287.0	285.0	281.9
JSWSTEEL	291.75	Neutral	Neutral	300	280	305.3	299.5	295.5	293.6	291.7	287.8	281.9
KOTAKBANK	1240.4	Long Built-up	Neutral	1260	1200	1280.0	1259.2	1245.1	1238.4	1231.7	1217.6	1196.8
LT	1390.4	Neutral	Neutral	1440	1360	1421.4	1405.8	1395.2	1390.2	1385.1	1374.6	1359.0
M&M	729.95	Neutral	Neutral	800	700	755.9	742.3	733.2	728.8	724.4	715.3	701.7
MARUTI	7507.75	Neutral	Neutral	8000	7000	7714.5	7601.6	7525.5	7489.1	7452.7	7376.5	7263.7
NTPC	146.55	Neutral	Neutral	150	142.5	150.9	148.9	147.5	146.9	146.3	144.9	142.9
ONGC	146.1	Neutral	Down	150	140	151.7	149.4	147.9	147.2	146.4	144.9	142.7
POWERGRID	197.25	Short Covering	Neutral	200	195	202.1	199.6	197.9	197.2	196.4	194.7	192.2
RELIANCE	1113.95	Long Built-up	Neutral	1140	1100	1140.1	1125.9	1116.3	1111.7	1107.1	1097.6	1083.4
SBIN	305.9	Short Built-up	Neutral	310	290	315.2	310.6	307.5	306.1	304.6	301.5	296.9
SUNPHARMA	449.7	Short Covering	Neutral	500	400	469.7	459.6	452.8	449.6	446.3	439.5	429.4
TATAMOTORS	184.05	Long Built-up	Up	190	170	190.0	186.2	183.7	182.5	181.3	178.7	174.9
TATASTEEL	481.85	Short Built-up	Down	500	490	505.5	496.8	490.9	488.1	485.3	479.4	470.7
TCS	1890.25	Short Built-up	Neutral	2000	1700	1940.7	1917.5	1901.9	1894.5	1887.0	1871.4	1848.2
TECHM	697.15	Short Covering	Neutral	740	680	715.7	705.6	698.8	695.5	692.3	685.5	675.4
TITAN	958.15	Long Built-up	Neutral	1000	900	981.2	967.9	959.0	954.7	950.4	941.5	928.3
ULTRACEMCO	3837.3	Short Built-up	Down	4000	3800	3998.5	3942.6	3904.9	3886.8	3868.8	3831.1	3775.1
UPL	767.3	Long Built-up	Up	800	740	788.5	775.2	766.3	762.1	757.8	748.9	735.6
VEDL	195.85	Short Built-up	Neutral	200	180	203.9	200.1	197.6	196.4	195.2	192.6	188.8
WIPRO	327.85	Long Built-up	Up	330	310	335.0	330.7	327.8	326.5	325.1	322.2	317.9
YESBANK	187	Short Built-up	Down	200	180	202.2	196.2	192.1	190.2	188.3	184.2	178.2
ZEEL	453.85	Short Built-up	Neutral	500	430	473.4	463.7	457.2	454.1	451.0	444.5	434.8

DISCLOSURES

Research Team Tel: 022 – 71148579

E-mail: research@inventuregrowth.com

Website: Inventuregrowth.com

This Report is published by Inventure Growth & Securities Limited (hereinafter referred to as “IGSL”) for private circulation. IGSL is a registered Research Analyst under SEBI (Research Analyst) Regulations, 2014 having Registration no. INH000006129. IGSL is also a registered Stock Broker with National Stock Exchange of India Limited, BSE Limited and Metropolitan Stock Exchange of India Limited (MSE) in cash, F&O & currency derivatives segments. It is also registered as a Depository Participant with CDSL and is also registered with AMFI as a Mutual Fund Distributor

IGSL have not been debarred / suspended by SEBI for Retail & Institutional business or any other regulatory authority for accessing / dealing in securities Market other than PRO business. IGSL, its associates or analyst or his relatives may or may not hold any financial interest in the subject company. IGSL or its associates or Analyst do not have any conflict or material conflict of interest at the time of publication of the research report with the subject company. IGSL or its Affiliates may or may not have been beneficial ownership of one percent or more of the securities mentioned in this report. However, one or more of IGSL or its Affiliates may, from time to time, have a long or short position in any of the securities mentioned herein and may buy or sell those securities or options thereon, either on their own account.

IGSL or its associates / analyst has not received any compensation / managed or co-managed public offering of securities of the company covered by Analyst during the past twelve months. IGSL or its associates have not received any compensation or other benefits from the company covered by Analyst or third party in connection with the research report. Analyst has not served as an officer, director or employee of Subject Company and IGSL / analyst has not been engaged in market making activity of the subject company.

Analyst Certification: I/We, **Kunal Kame/ Yash Doshi** the research analyst Is the author of this report, hereby certify that the views expressed in this research report accurately reflects my/our personal views about the subject securities, issuers, products, sectors or industries. It is also certified that no part of the compensation of the analyst(s) was, is, or will be directly or indirectly related to the inclusion of specific recommendations or views in this research. The analyst(s) principally responsible for the preparation of this research report and has taken reasonable care to achieve and maintain independence and objectivity in making any recommendations.

Research Team	Profile	Email ID
Mr. Prashant Barwaliya	Head- Research	Prashant.b@inventuregrowth.com
Mr. Yash Doshi	Fundamental Analyst	Yash.doshi@Inventuregrowth.com
Mr. Smeet Gala	Fundamental Analyst	Smeet.Gala@Inventuregrowth.com
Mr. Kunal Kame	Technical Analyst	Kunal.kame@Inventuregrowth.com

Created by: **IGSL - Research**
Inventure Growth & Securities Ltd, 201, Viraj Tower, Near Landmark Building,
Western Express Highway, Andheri (East), Mumbai -400 093
Tele: 91-22-71148500 , Fax: 91-22-40751511.
E-mail: Research@inventuregrowth.com , website : <http://www.inventuregrowth.com>

DISCLAIMER

Inventure Growth and Securities Limited (hereinafter referred to as “IGSL”) is a registered Member of National Stock Exchange of India Limited, Bombay Stock Exchange Limited and Metropolitan Stock Exchange Limited. It is also registered as a Depository Participant with CDSL. It also has registration with AMFI as a Mutual Fund Distributor. Inventure Growth and Securities Limited is a registered entity with SEBI for Research Analyst in terms of SEBI (Research Analyst) Regulations, 2014 vide registration number INH000006129. IGSL has not been debarred/ suspended by SEBI or any other regulatory authority for accessing /dealing in securities Market. IGSL or its associates/ analyst has not received any compensation / managed or co-managed public offering of securities of the company covered by Analyst during the past twelve months.

This document is solely for the personal information of the recipient, and must not be singularly used as the basis of any investment decision. Nothing in this document should be construed as investment or financial advice. Each recipient of this document should make such investigations as they deem necessary to arrive at an independent evaluation of an investment in the securities of the companies referred to in this document (including the merits and risks involved), and should consult their own advisors to determine the merits and risks of such an investment. Reports based on technical and derivative analysis center on studying charts of a stock's price movement, outstanding positions and trading volume, as opposed to focusing on a company's fundamentals and, as such, may not match with a report on a company's fundamentals. Investors are advised to refer the Fundamental and Technical Research Reports available on our website to evaluate the contrary view, if any.

The information in this document has been printed on the basis of publicly available information, internal data and other reliable sources believed to be true, but we do not represent that it is accurate or complete and it should not be relied on as such, as this document is for general guidance only. Inventure Growth and Securities Limited or any of its affiliates/ group companies shall not be in any way responsible for any loss or damage that may arise to any person from any inadvertent error in the information contained in this report. Inventure Growth and Securities Limited has not independently verified all the information contained within this document. Accordingly, we cannot testify, nor make any representation or warranty, express or implied, to the accuracy, contents or data contained within this document. While Inventure Growth and Securities Limited endeavors to update on a reasonable basis the information discussed in this material, there may be regulatory, compliance, or other reasons that prevent us from doing so. This document is being supplied to you solely for your information, and its contents, information or data may not be reproduced, redistributed or passed on, directly or indirectly.

Neither Inventure Growth and Securities Limited , nor its directors, employees or affiliates shall be liable for any loss or damage that may arise from or in connection with the use of this information.