

### Nifty Levels

Prev. Close	16,568.85
Trend	Up
Resistance 3	16,779
Resistance 2	16,699
Resistance 1	16,650
Support 1	16,488
Support 2	16,439
Support 3	16,358

### Index Data

<b>NIFTY</b>	16,568.85 -0.28%
<b>SENSEX</b>	55,629.49 0.00%
<b>BANKNIFTY</b>	35,554.50 -0.87%
<b>INDIAVIX</b>	12.9050 -3.78%
<b>10YR G-SEC</b>	6.228 0.00%
<b>USDINR</b>	74.386 +0.14%

Indian stock exchanges remain closed today on account of Muharram. Benchmark indexes Sensex and the Nifty ended down about 0.3 percent each on Wednesday while the rupee gained 11 paise to close at 74.24 against the greenback. Asian markets fell broadly this morning while the dollar reached multi-month highs against peers. U.S. stocks fell for a second straight session overnight after minutes of the July 27-28 Fed meeting revealed an emerging consensus among policymakers to begin tapering asset purchases in coming months.

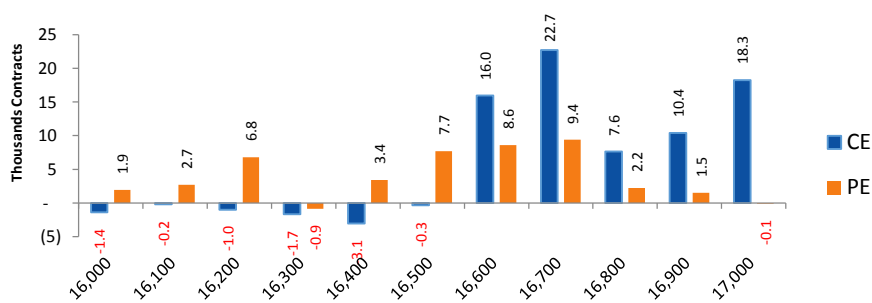
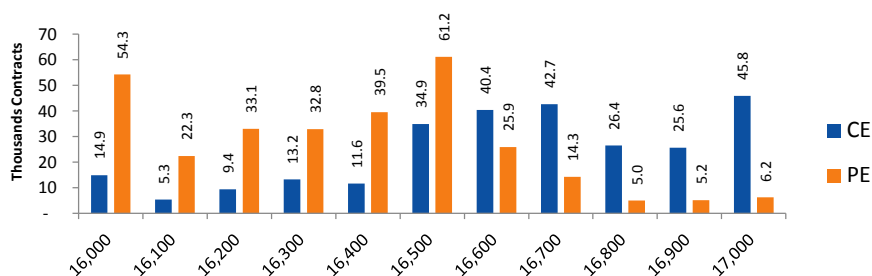
Nifty made fresh high of 16701 but was not able to hold those levels and give-up all the gain and ended in red after four days of straight gains. SGX Nifty indicating Indian market will open with gap down opening. We can consider support zone between 16350 and 16150 which was previous support zone. Moreover 20 Day EMA is also placed at 16138.



Script		News Impact	Technical Trend
<b>L&amp;T Infotech Ltd.</b>	Larsen & Toubro Infotech (LTI), the multinational tech consulting and digital solutions subsidiary of Larsen & Toubro, is planning to hire 4,500 freshers during the current financial year to stem high attrition rate. The IT major had hired 3,000 freshers last fiscal. <b>(livemint.com)</b>	Positive	Bullish
<b>Zomato Ltd.</b>	Zomato Ltd. acquired 9.16% shareholding in Grofers India for Rs 518.21 crore and 8.94% shareholding in Hands-on Trades for Rs 222.83 crore. <b>(moneycontrol.com)</b>	Positive	Consolidation
<b>Tata Elxsi Ltd.</b>	<b>Tata Elxsi</b> collaborated with DStv Media Sales, to consult and collaboratively build a vision for DStv Media Sales (DMS) that addresses current challenges while also positioning DMS for future growth. <b>(business-standard.com)</b>	Positive	Bullish

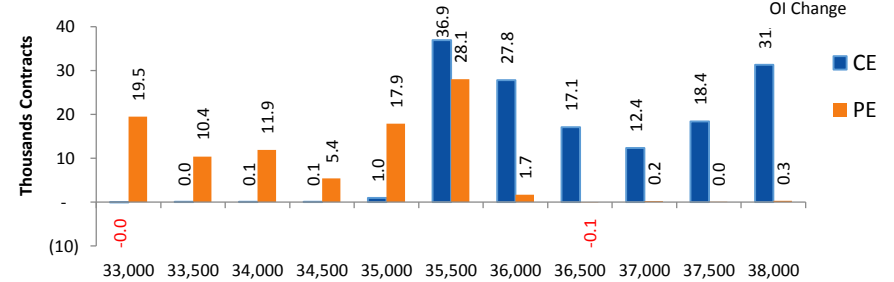
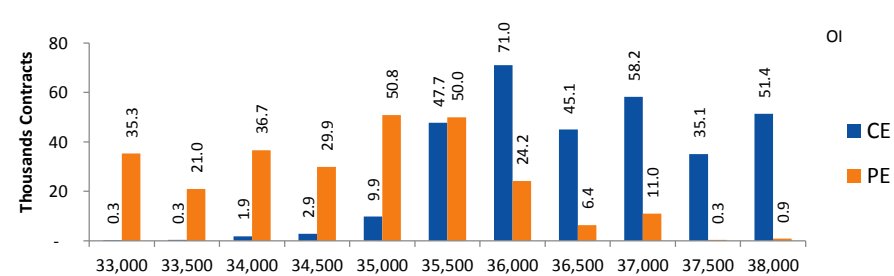
# Index Option Data

Index	NIFTY	Change
Fut Closing	16572.3	-0.1%
Prem/Disc	3.45	22.20
OI Qty	1.53 Cr.	-1.7%
Nifty PCR	1.45	
Highest OI	17000 CE	16500 PE



- NIFTY future was Down 0.14% with decrease in O I by 1.65%.
- Nifty Put O I addition was seen at 16700 followed by 16600 which can act as short term support
- Nifty Call O I addition was seen at 16700 followed by 17000. which can act as short term resistance

Index	BANKNIFTY	Change
Fut Closing	35601.3	-0.9%
Prem/Disc	46.80	-23.60
OI Qty	0.23 Cr.	6.5%
Highest OI	36000 CE	35000 PE



- Nifty Bank future was Down 0.94% with increase in O I by 6.52%.
- Nifty Bank Put O I addition was seen at 35500 followed by 33000 which can act as short term support.
- Nifty Bank Call O I addition was seen at 35500 followed by 38000 which can act as short term resistance.

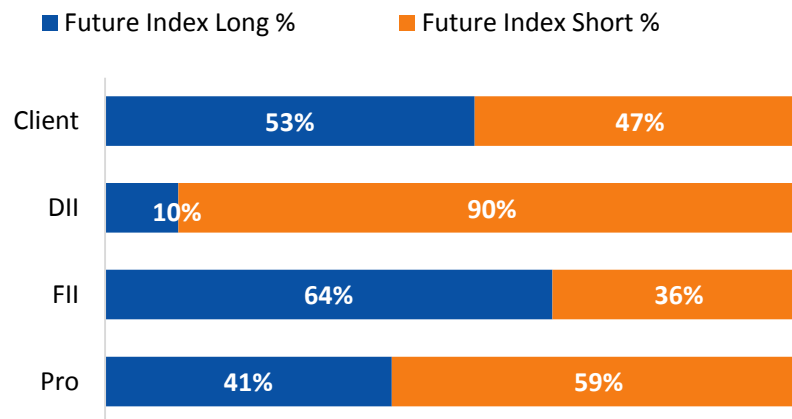
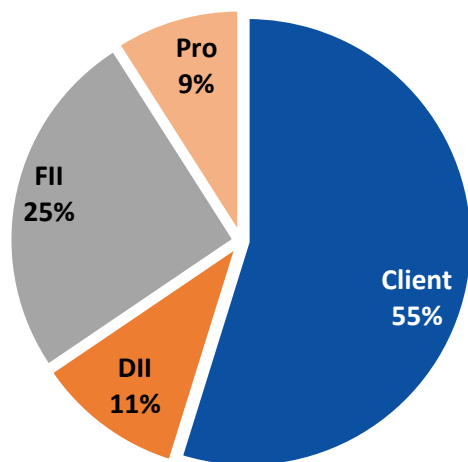
## Participant wise OI Activity

( Fig in '000 Contracts)

Participant Type	Index Fut Activity	Call Activity	Put Activity
Retail	0.5	88.8	-70.6
DII	-4.9	0.00	-8.5
FII	0.1	-70.48	-40.5
Pro	4.4	-18.30	119.6

- FII added long Index future by 0.1k contracts and Client covered the short Index future by 0.5k contracts
- FII unwound the long calls by 70.5k contracts and unwound the long puts by 40.5 k contracts
- Client Covered the short calls by 88.8k contracts and unwound the long puts by 70.6 k contracts

## Index Future OI %



## Open Interest Gainers

Symbol	Trend	Future Price	Price Chng %	Fut OI Chng %
MCDOWELL-N	Up	725.15	9.7%	18.7%
RAMCOCEM	Down	990.55	1.6%	13.5%
UBL	Down	1497.65	6.4%	8.9%

## Volume Gainers

Symbol	Trend	Future Price	Price Chng %	3 Day Vol Chng %
IBULHSGFIN	Down	242	-3.2%	192.5%
RBLBANK	Down	169.3	-0.7%	190.8%
MCDOWELL-N	Up	725.15	9.7%	157.5%

## Stocks Near Highest Call Open Interest

Symbol	Trend	Future Price	Highest Call OI	No of Contracts
AXISBANK	Up	754.8	760	4423
HDFC	Up	2714.3	2700	3888
BAJFINANCE	Up	6538.6	6600	2408

### BAN Scripts

CADILAHC: 83%, CANBK: 93%, NATIONALUM: 91%, PNB: 84%, SAIL: 86%, SUNTV: 84%, VEDL: 90%

## Open interest Losers

Symbol	Trend	Future Price	Price Chng %	Fut OI Chng %
CANBK	Up	156.75	3.3%	-10.2%
INDUSTOWER	Down	218.85	2.0%	-6.7%
HDFCBANK	Up	1512.95	-0.4%	-6.3%

## Highest Position Carry forward %

Symbol	Trend	Future Price	Price Chng %	O I Chng / Volume
IGL	Down	529.7	-1.2%	18.5%
ASIANPAINT	Down	3008.05	-0.4%	17.9%
GODREJPROP	Down	1509.75	-0.7%	15.0%

## Stocks Near Highest Put Open Interest

Symbol	Trend	Future Price	Highest Put OI	No of Contracts
NIFTY	Up	16572.3	16500	61168
ITC	Down	209.4	210	2783
INDUSINDBK	Neutral	991.95	1000	1092

# Nifty 50 Stock Levels

Symbol	Close	Trend	5 Day SMA	10 Day SMA	20 Day SMA	R3	R2	R1	S1	S2	S3
NIFTY	16568.85	Up	16520.7	16397.9	16140.7	16779.3	16698.9	16650.1	16487.6	16438.8	16358.4
BANKNIFTY	35554.5	Neutral	35991.0	36003.1	35493.0	36215.8	35963.2	35809.8	35299.2	35145.8	34893.2
ADANIAPORTS	705.4	Down	704.1	702.7	692.5	724.2	717.0	712.6	698.2	693.8	686.6
ASIANPAINT	3001.55	Down	2993.1	2990.8	3011.9	3056.5	3035.5	3022.8	2980.3	2967.6	2946.6
AXISBANK	754.4	Up	758.9	756.7	746.5	774.8	767.0	762.3	746.5	741.8	734.0
BAJAJ-AUTO	3833.05	Down	3797.1	3808.0	3820.5	3902.8	3876.2	3860.0	3806.1	3789.9	3763.3
BAJAJFINSV	15006.55	Up	14604.7	14375.2	14142.2	15398.2	15248.6	15157.7	14855.4	14764.5	14614.9
BAJFINANCE	6544.1	Up	6339.4	6280.7	6274.2	6725.4	6656.1	6614.1	6474.1	6432.1	6362.8
BHARTIARTL	622.95	Up	629.3	619.9	589.9	635.9	631.0	628.0	617.9	614.9	610.0
BPCL	463.5	Up	459.5	456.1	456.5	473.9	469.9	467.5	459.5	457.1	453.1
BRITANNIA	3720.75	Up	3660.1	3641.5	3559.0	3783.3	3759.4	3744.9	3696.6	3682.1	3658.2
CIPLA	908.85	Down	901.3	910.1	916.9	925.7	919.2	915.3	902.4	898.5	892.0
COALINDIA	138.35	Down	141.0	142.8	143.4	141.1	140.1	139.4	137.3	136.6	135.6
DIVISLAB	4910.5	Neutral	4909.6	4914.4	4903.2	4997.9	4964.5	4944.2	4876.8	4856.5	4823.1
DRREDDY	4687	Down	4688.3	4737.4	4842.1	4773.2	4740.3	4720.3	4653.7	4633.7	4600.8
EICHERMOT	2589.7	Down	2550.8	2636.4	2602.6	2645.4	2624.1	2611.2	2568.2	2555.3	2534.0
GRASIM	1501.15	Down	1495.6	1502.0	1528.6	1532.5	1520.5	1513.3	1489.0	1481.8	1469.8
HCLTECH	1134.25	Up	1123.5	1092.1	1050.8	1156.0	1147.7	1142.7	1125.8	1120.8	1112.5
HDFC	2710.75	Up	2710.2	2680.9	2584.3	2769.0	2746.8	2733.2	2688.3	2674.7	2652.5
HDFCBANK	1513	Up	1518.5	1508.9	1473.8	1540.7	1530.1	1523.7	1502.3	1495.9	1485.3
HDFCLIFE	671.05	Down	672.9	672.0	670.2	684.5	679.4	676.3	665.8	662.7	657.6
HEROMOTOCO	2763.6	Down	2772.3	2796.2	2799.0	2818.0	2797.2	2784.6	2742.6	2730.0	2709.2
HINDALCO	426.95	Up	437.5	436.2	430.6	439.2	434.5	431.7	422.2	419.4	414.7
HINDUNILVR	2486.05	Up	2438.8	2409.6	2384.6	2524.1	2509.6	2500.7	2471.4	2462.5	2448.0
ICICIBANK	688.3	Up	701.1	701.6	692.0	705.2	698.8	694.8	681.8	677.8	671.4
INDUSINDBK	989.65	Neutral	1012.8	1019.4	1006.1	1024.1	1010.9	1002.9	976.4	968.4	955.2

# Nifty 50 Stock Levels

Symbol	Close	Trend	5 Day SMA	10 Day SMA	20 Day SMA	R3	R2	R1	S1	S2	S3
INFY	1733.45	Up	1717.5	1691.2	1653.8	1764.0	1752.3	1745.2	1721.7	1714.6	1702.9
IOC	106.2	Neutral	105.7	105.1	104.8	108.2	107.4	107.0	105.4	105.0	104.2
ITC	208.95	Down	210.2	211.6	210.3	212.5	211.1	210.3	207.6	206.8	205.4
JSWSTEEL	737.5	Up	749.7	749.8	740.3	756.5	749.3	744.8	730.2	725.7	718.5
KOTAKBANK	1749.75	Up	1779.2	1782.8	1737.7	1786.5	1772.5	1763.9	1735.6	1727.0	1713.0
LT	1632.8	Up	1644.6	1624.8	1616.3	1664.0	1652.1	1644.8	1620.8	1613.5	1601.6
M&M	791.35	Up	787.6	780.6	766.9	809.2	802.4	798.2	784.5	780.3	773.5
MARUTI	6840.15	Down	6927.2	6998.2	7070.6	6976.3	6924.3	6892.7	6787.6	6756.0	6704.0
NESTLEIND	18910.95	Up	18505.1	18344.4	18173.0	19206.0	19093.3	19024.8	18797.1	18728.6	18615.9
NTPC	116.55	Down	118.1	117.1	117.6	118.7	117.9	117.4	115.7	115.2	114.4
ONGC	113.2	Down	115.2	115.7	115.7	116.0	114.9	114.3	112.1	111.5	110.4
POWERGRID	180.6	Up	182.9	178.6	190.1	184.0	182.7	181.9	179.3	178.5	177.2
RELIANCE	2172.6	Up	2153.4	2128.2	2102.5	2216.3	2199.6	2189.5	2155.7	2145.6	2128.9
SBILIFE	1114.05	Up	1134.2	1136.2	1118.9	1135.6	1127.3	1122.3	1105.8	1100.8	1092.5
SBIN	419.7	Down	425.5	430.1	432.5	429.9	426.0	423.6	415.8	413.4	409.5
SHREECEM	26326.85	Down	26405.6	27156.9	27749.8	26858.7	26655.5	26532.1	26121.6	25998.2	25795.0
SUNPHARMA	782.9	Up	779.9	783.3	756.3	798.3	792.4	788.9	776.9	773.4	767.5
TATACONSUM	841.4	Up	812.5	791.7	778.6	859.2	852.4	848.3	834.5	830.4	823.6
TATAMOTORS	293.35	Neutral	302.1	300.2	298.1	302.6	299.1	296.9	289.8	287.6	284.1
TATASTEEL	1500.45	Up	1484.3	1453.5	1411.6	1541.1	1525.6	1516.1	1484.8	1475.3	1459.8
TCS	3560.5	Up	3479.7	3401.9	3311.7	3618.5	3596.4	3582.9	3538.1	3524.6	3502.5
TECHM	1412.5	Up	1393.5	1341.4	1251.4	1441.6	1430.5	1423.7	1401.3	1394.5	1383.4
TITAN	1880.3	Up	1850.7	1825.1	1787.2	1917.9	1903.5	1894.8	1865.8	1857.1	1842.7
ULTRACEMCO	7601.3	Down	7470.8	7509.2	7573.5	7748.0	7692.0	7657.9	7544.7	7510.6	7454.6
UPL	762.2	Down	771.8	774.9	792.3	782.2	774.5	769.9	754.5	749.9	742.2
WIPRO	629.4	Neutral	620.6	611.0	602.0	642.1	637.3	634.3	624.5	621.5	616.7

## Research Disclaimer and Disclosure inter-alia as required under Securities and Exchange Board of India (Research Analysts) Regulations, 2014

Inventure Growth and Securities Limited (“IGSL”) is a registered Research Analyst Entity (hereinafter be referred as “IGSL RE”). “IGSL” is a registered stock broker or intermediary engaged in Stock Broking, Depository Participant and Mutual Fund Distributor. Registered member of National Stock Exchange of India Ltd (NSEIL), Bombay Stock Exchange Ltd (BSE), Metropolitan Stock Exchange of India Ltd (MSEI). IGSL is also a depository participant with Central Depository Services Ltd (CDSL)

This Research Report (hereinafter referred as “Report”) has been prepared by Inventure Growth & Securities Limited as a Research Entity (hereinafter referred as “IGSL RE” Limited. The Research Analysts, strategists are principally responsible for the preparation of “IGSL RE” research. The research analysts have received compensation based upon various factors, which may include quality of research, investor client feedback, stock picking, competitive factors and firm revenues etc.

Whilst IGSL has taken all reasonable steps to ensure that this information is correct, IGSL does not offer any warranty as to the accuracy or completeness of such information. Any person placing reliance on the report to undertake trading does so entirely at his or her own risk and IGSL does not accept any liability as a result. Securities and Derivatives markets may be subject to rapid and unexpected price movements and past performance is not necessarily an indication of future performance.

**General Disclaimer:** This ‘Report’ is strictly meant for use by the recipient and is not for circulation. This Report does not take into account particular investment objectives, financial situations or specific needs of individual clients nor does it constitute a personal recommendation. The recommendations, if any, made herein are expression of views and/or opinions and should not be deemed or construed to be neither advice for the purpose of purchase or sale of any security, derivatives or any other security through IGSL nor any solicitation or offering of any investment /trading opportunity on behalf of the issuer(s) of the respective security (ies) referred to herein. These information / opinions / views are not meant to serve as a professional investment guide for the readers. No action is solicited based upon the information provided herein. Recipients of this “Report” should rely on information/data arising out of their own Study/investigations. It is advised to seek independent professional advice and arrive at an informed trading/investment decision before executing any trades or making any investments. This ‘Report’ has been prepared on the basis of publicly available information, internally developed data and other sources believed by IGSL to be reliable. IGSL or its directors, employees, affiliates or representatives shall not be responsible for, or warrant for the accuracy, completeness, adequacy and reliability of such information / opinions / views. Though due care has been taken to ensure that the disclosures and opinions given are fair and reasonable, none of the directors, employees, affiliates or representatives of IGSL shall be liable for any direct, indirect, special, incidental, consequential, punitive or exemplary damages, including lost profits arising in any way whatsoever from the information / opinions / views contained in this Report.

The price and value of the investments referred to in this Report and the income from them may tend to go down as well as up, and investors may incur losses on any investments. Yester performance shall not be a guide for future performance. IGSL does not provide tax advice to its clients, and all investors are strongly advised to take advice of their tax advisers regarding taxation aspects of any potential investment. Opinions are based on the current scenario as of the date appearing on this ‘Report’ only. IGSL does not undertake to advise you as to any change of our views expressed in this “Report’ may differ on account of differences in research methodology, personal judgment and difference in time horizons for which recommendations are made. User should keep this risk in mind and not hold IGSL, its employees and associates responsible for any losses, damages of any type whatsoever.

**Disclaimers in respect of jurisdiction:** This report is not directed to, or intended for distribution to or use by, any person or entity who is a citizen or resident of or located in

any locality, state, country or other jurisdiction where such distribution, publication, availability or use would be contrary to law or regulation or which would subject “IGSL” to any registration or licensing requirement within such jurisdiction(s). No action has been or will be taken by “IGSL” in any jurisdiction (other than India), where any action for such purpose(s) is required. Accordingly, this ‘Report’ shall not be possessed, circulated and/or distributed in any such country or jurisdiction unless such action is in compliance with all applicable laws and regulations of such country or jurisdiction. “IGSL” requires such recipient to inform himself about and to observe any restrictions at his own expense, without any liability to “IGSL”. Any dispute arising out of this Report shall be subject to the exclusive jurisdiction of the Courts in Mumbai (India).

Statements on ownership and material conflicts of interest, compensation - IGSL and Associates reciprocates to the best of the knowledge and belief of IGSL/ its Associates/ research Analyst who is preparing this report.



# Disclaimer and Disclosure



## Disclosures of Interest (Additional):

- “IGSL”, its research Analyst(s), or its associates or relatives of the Research Analyst does not have any financial interest in the company(ies) covered in this report.
- “IGSL” its research Analyst, or its associates or relatives of the research analyst affiliates collectively do not hold more than 1% of the securities of the company (ies)covered in this report as of the end of the month immediately preceding the distribution of the research report.
- “IGSL”, its research analyst, his/her associate, his/her relative, do not have any other material conflict of interest at the time of publication of this research report.
- “IGSL”, its research analyst, and its associates have not received compensation for investment banking or merchant banking or brokerage services or for any other products or services from the company(ies) covered in this report, in the past twelve months.
- “IGSL”, its research analyst, or its associates have not managed or co-managed in the previous twelve months, a private or public offering of securities for the company (ies) covered in this report.
- “IGSL, or its associates have not received compensation or other benefits from the company(ies) covered in this report or from any third party, in connection with the research report.
- IGSL research analyst has not served as an Officer, Director, or employee of the company (ies) covered in the Research report.
- “IGSL”, its research analyst has not been engaged in market making activity for the company(ies) covered in the Research report.
- The details of IGSL, its research analyst and its associates pertaining to the companies covered in the Research report are given below

Sr. No.	Particulars	Yes / No
1.	Whether compensation has been received from the company(ies) covered in the Research report in the past 12 months for investment banking transaction by IGSL	No
2.	Whether Research Analyst, IGSL or its associates or relatives of the Research Analyst affiliates collectively hold more than 1% of the company(ies) covered in the Research report	No
3.	Whether compensation has been received by IGSL or its associates from the company(ies) covered in the Research report	No
4.	IGSL or its affiliates have managed or co-managed in the previous twelve months a private or public offering of securities for the company(ies) covered in the Research report	No
5.	IGSL, its research analyst, his associate, or its associates have received compensation for investment banking or merchant banking or brokerage services or for any other products or services from the company(ies) covered in the Research report, in the last twelve months	No

**Copyright:** The copyright in this research report belongs exclusively to IGSL. All rights are reserved. Any unauthorized use or disclosure is prohibited. No reprinting or reproduction, in whole or in part, is permitted without the IGSL’s prior consent, except that a recipient may reprint it for internal circulation only and only if it is reprinted in its entirety.

This “Report” is for distribution only under such circumstances as may be permitted by applicable law. This “Report” has no regard to the specific investment objectives, financial situation or particular needs of any specific recipient, even if sent only to a single recipient. This “Report” is not guaranteed to be a complete statement or summary of any securities, markets, reports or developments referred to in this research report. Neither IGSL nor any of its directors, officers, employees or agents shall have any liability, however arising, for any error, inaccuracy or incompleteness of fact or opinion in this “report” or lack of care in this report’s preparation or publication, or any losses or damages which may arise from the use of this research report.

Information barriers may be relied upon by IGSL, such as “Chinese Walls” to control the flow of information within the areas, units, divisions, groups, or affiliates of IGSL.

Investing in any non-U.S. securities or related financial instruments (including ADRs) discussed in this research report may present certain risks. The securities of non-U.S. issuers may not be registered with, or be subject to the regulations of, the U.S. Securities and Exchange Commission. Information on such non-U.S. securities or related financial instruments may be limited. Foreign companies may not be subject to audit and reporting standards and regulatory requirements comparable to those in effect within the United States. The value of any investment or income from any securities or related financial instruments discussed in this research report denominated in a currency other than U.S. dollars is subject to exchange rate fluctuations that may have a positive or adverse effect on the value of or income from such securities or related financial instruments.

Past performance is not necessarily a guide to future performance and no representation or warranty, express or implied, is made by IGSL with respect to future performance. Income from investments may fluctuate. The price or value of the investments to which this research report relates, either directly or indirectly, may fall or rise against the interest of investors. Any recommendation or opinion contained in this research report may become outdated as a consequence of changes in the environment in which the issuer of the securities under analysis operates, in addition to changes in the estimates and forecasts, assumptions and valuation methodology used herein.

No part of the content of this research report may be copied, forwarded or duplicated in any form or by any means without the prior written consent of IGSL and IGSL accepts no liability whatsoever for the actions of third parties in this respect.