

Nifty Levels

Prev. Close	14,690.7
Trend	Neutral
Resistance 3	19,011
Resistance 2	14,827
Resistance 1	14,776
Support 1	14,606
Support 2	14,555
Support 3	14,470

Index Data

NIFTY	14,690.70 -1.04%
SENSEX	49,509.15 -1.25%
BANKNIFTY	33,303.90 -1.69%
INDIAVIX	20.65 +0.78%
10YR G-SEC	6.18% 0.00
USDINR	73.15 -0.40%

Indian shares succumbed to heavy selling pressure on Wednesday as a steep rise in the dollar index and climbing U.S. bond yields revived fears over capital outflows. The dollar headed for its best month since November 16 while Treasury yields are on pace for their biggest quarterly rise in 5 years, buoyed by hopes of stronger growth and inflation. Renewed concerns over rising Covid-19 cases in the country also dented sentiment. Nifty index settled at 14,690.70, down 154.40 points, from its previous close.

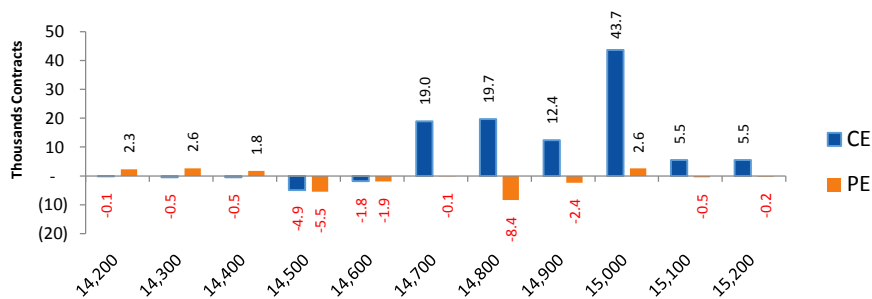
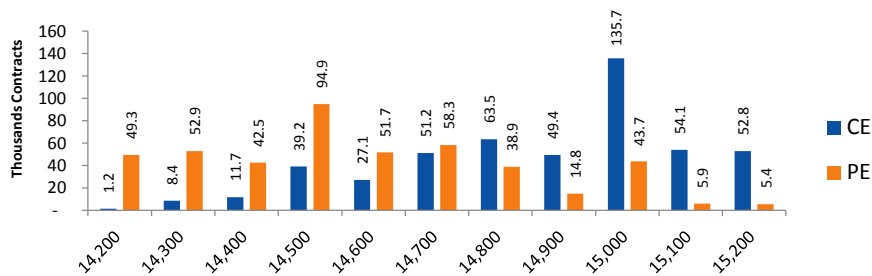
Nifty formed shaven head in previous session which indicates that bears took the charge from the beginning of trading session and pushed nifty towards 50 days EMA. On the daily chart index formed bears Harami pattern which shows that bears are not ready to loose its control over the market. In other side index's RSI face resistance of downward sloping trendline. Above all the factors indicating negative sentiments among participants. So, further bullish move index has to sustain above 14900 level.



Script	Prev. Close	News	News Impact	Technical Trend	Support	Resistance
BPCL	427.95 -0.66%	Bharat Petroleum Corporation Limited the second largest Indian Oil Marketing Company will acquire 36.6% stake from its partner OQ, the national oil company of Oman, in the Bharat Oman Refinery Ltd (BORL) for Rs.24 billion, the company. With the acquisition of OQ's entire stake in BORL, BPCL will establish control over BORL. (moneycontrol.com)	Positive	Bearish	414	448/ 468
Sunteck Realty Limited	280.40 0.59%	Sunteck Realty has secured around 7 acre land parcel at Borivali (West). The company will develop a luxury residential project and JLL India was the exclusive transaction partner for the joint venture. It is expected to generate a project topline of around Rs 1,750 crore over the next 4-5 years. (indiatimes.economictimes.com)	Positive	Bearish	270/250	295/310
NHPC Limited	24.45 -2.40%	It had completed the formalities for takeover of Rangit Stage-IV HE Project (120 MW) by remitting Rs 165 crore to Jalpower Corporation (JPCL) for distribution to the creditors. JPCL is now a wholly owned subsidiary company of NHPC. (business-standard.com)	Positive	Consolidation	23.15	26.65/ 27.65

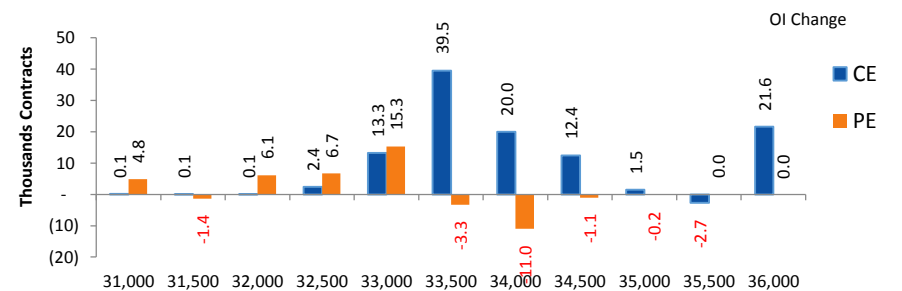
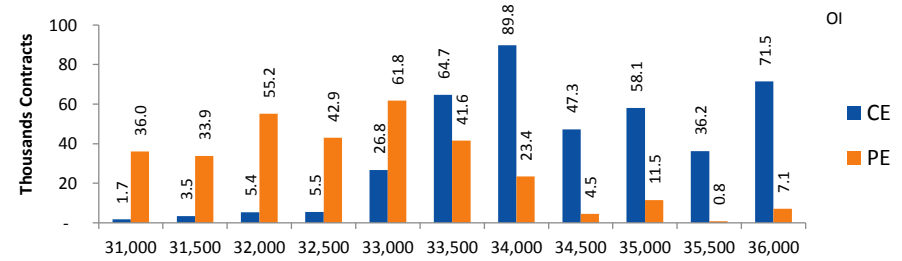
Index Option Data

Index	NIFTY	Change
Fut Closing	14752.3	-1.1%
Prem /Disc	61.60	-6.85
OI Qty	1.26 Cr.	1.6%
Nifty PCR	1.05	
Highest OI	15000 CE	14000 PE



- NIFTY future was Down 1.08% with increase in O I by 1.62%.
- Nifty Put O I Reduction was seen at 14800 followed by 14500
- Nifty Call O I addition was seen at 15000 followed by 14800. which can act as short term resistance

Index	BANKNIFTY	Change
Fut Closing	33478.45	-1.7%
Prem/Disc	174.55	2.85
OI Qty	0.33 Cr.	2.8%
Highest OI	40000 CE	30000 PE



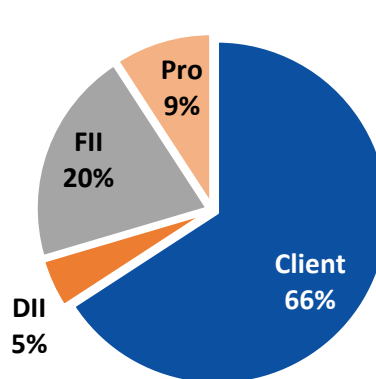
- Nifty Bank future was Down 1.67% with increase in O I by 2.83%.
- Nifty Bank Put O I addition was seen at 33000 followed by 32500 which can act as short term support.
- Nifty Bank Call O I addition was seen at 33500 followed by 36000 which can act as short term resistance.

Participant wise OI Activity

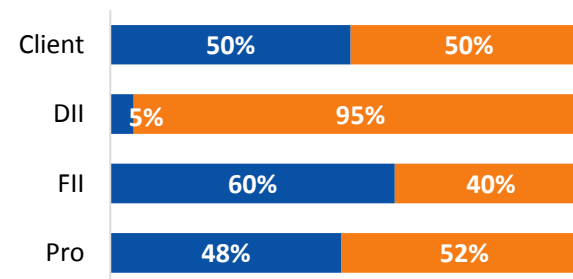
(Fig in '000 Contracts)

Participant Type	Index Fut Activity	Call Activity	Put Activity
Retail	11.8	95.6	-9.0
DII	1.9	0.0	0.2
FII	-22.4	-9.4	35.5
Pro	8.8	-86.2	-26.6

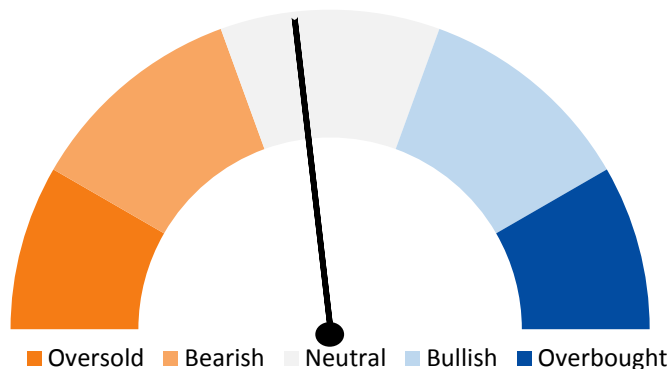
Index Future OI %



■ Future Index Long % ■ Future Index Short %

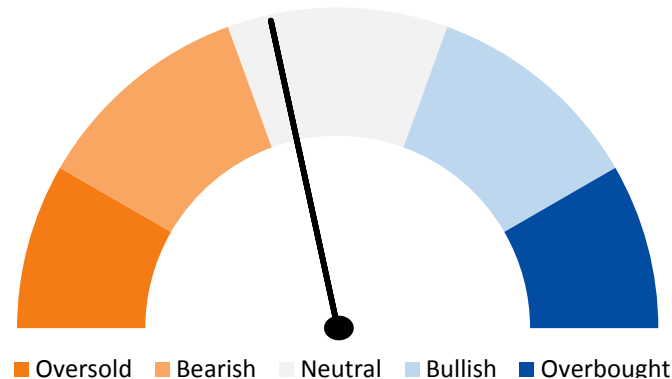


- FII added short Index future by 22.4k contracts and Client added long Index future by 11.8k contracts
- FII added Short calls by 9.4k contracts and added long puts by 35.5 k contracts
- Client added Long calls by 95.6k contracts and added short puts by 9 k contracts



Weekly Sentiment Meter

Price & OI Activity Study of All Derivative Scripts



Monthly Sentiment Meter

Price & OI Activity Study of All Derivative Scripts

Open Interest Gainers

Symbol	Trend	Future Price	Price Chng %	Fut OI Chng %
IDFCFIRSTB	Down	54.95	-6.1%	22.9%
PEL	Down	1766.4	-0.7%	19.0%
IDEA	Down	9.4	1.1%	17.3%

Volume Gainers

Symbol	Trend	Future Price	Price Chng %	3 Day Vol Chng %
PEL	Down	1766.4	-0.7%	45.6%
IDFCFIRSTB	Down	54.95	-6.1%	40.1%
MINDTREE	Up	2090.55	-1.9%	36.3%

Stocks Near Highest Call Open Interest

Symbol	Trend	Future Price	Highest Call OI	No of Contracts
ITC	Neutral	219.35	220	3555
HDFCBANK	Down	1497	1500	2700
TCS	Up	3193.35	3200	1465

BAN Scripts

SAIL: 94%

Open interest Losers

Symbol	Trend	Future Price	Price Chng %	Fut OI Chng %
MINDTREE	Up	2090.55	-1.9%	-10.2%
LTTS	Up	2670.25	0.5%	-9.3%
HINDPETRO	Down	235.25	1.5%	-6.0%

Highest Position Carry forward %

Symbol	Trend	Future Price	Price Chng %	O I Chng / Volume
IDEA	Down	9.4	1.1%	38.5%
HEROMOTOCO	Down	2932.25	-0.9%	32.2%
IDFCFIRSTB	Down	54.95	-6.1%	26.2%

Stocks Near Highest Put Open Interest

Symbol	Trend	Future Price	Highest Put OI	No of Contracts
HDFC	Up	2515.6	2500	919
GAIL	Down	136.25	135	216
MUTHOOTFIN	Down	1211.15	1200	200

Nifty 50 Stock Levels

Symbol	Close	Trend	5 Day SMA	10 Day SMA	20 Day SMA	R3	R2	R1	S1	S2	S3
NIFTY	14690.7	Neutral	14653	14694	14878	14911	14827	14776	14606	14555	14470
BANKNIFTY	33303.9	Down	33556	33816	34714	34017	33744	33579	33029	32863	32591
ADANIPTS	702.4	Down	706.3	705.6	722.6	719.8	713.2	709.1	695.7	691.6	685.0
ASIANPAINT	2537.4	Up	2504.9	2462.2	2437.8	2588.1	2568.8	2557.0	2517.8	2506.0	2486.7
AXISBANK	697.45	Down	702.9	714.2	730.0	719.8	711.3	706.1	688.8	683.6	675.1
BAJAJ-AUTO	3670.6	Down	3624.5	3639.7	3733.8	3746.6	3717.6	3699.9	3641.3	3623.6	3594.6
BAJAJFINSV	9668.6	Up	9423.7	9443.4	9710.1	9952.9	9844.3	9778.3	9558.9	9492.9	9384.3
BAJFINANCE	5149.85	Down	5216.8	5311.0	5392.4	5309.5	5248.5	5211.5	5088.2	5051.2	4990.2
BHARTIARTL	517.3	Down	521.6	525.4	529.6	529.4	524.7	522.0	512.6	509.9	505.2
BPCL	427.95	Down	427.8	429.2	444.3	439.5	435.1	432.4	423.5	420.8	416.4
BRITANNIA	3625.05	Up	3543.0	3523.5	3498.3	3696.5	3669.2	3652.6	3597.5	3580.9	3553.6
CIPLA	815.1	Up	802.4	786.0	797.4	832.0	825.5	821.6	808.6	804.7	798.2
COALINDIA	130.35	Down	131.4	134.3	141.3	133.2	132.1	131.4	129.3	128.6	127.5
DIVISLAB	3622.8	Up	3539.5	3465.1	3487.7	3697.1	3668.7	3651.5	3594.1	3576.9	3548.5
DRREDDY	4516	Down	4455.3	4390.0	4437.0	4601.4	4568.7	4548.9	4483.1	4463.3	4430.6
EICHERMOT	2603.95	Up	2624.7	2649.0	2638.2	2666.7	2642.7	2628.2	2579.7	2565.2	2541.2
GAIL	135.5	Down	132.5	134.1	139.9	138.9	137.6	136.8	134.2	133.4	132.1
GRASIM	1450.55	Up	1414.7	1408.9	1384.4	1485.7	1472.2	1464.1	1437.0	1428.9	1415.4
HCLTECH	982.65	Up	979.2	976.2	976.2	1004.2	995.9	991.0	974.3	969.4	961.1
HDFC	2498.1	Up	2526.8	2525.4	2550.1	2558.8	2535.6	2521.5	2474.7	2460.6	2437.4
HDFCBANK	1493.65	Down	1501.5	1497.4	1524.1	1524.1	1512.5	1505.4	1481.9	1474.8	1463.2
HDFCLIFE	696.2	Down	682.6	684.3	703.6	712.8	706.5	702.6	689.8	685.9	679.6
HEROMOTOCO	2913.6	Down	2967.7	3047.0	3217.5	2981.8	2955.7	2939.9	2887.3	2871.5	2845.4
HINDALCO	326.85	Neutral	324.0	328.9	335.3	337.0	333.1	330.8	322.9	320.6	316.7
HINDUNILVR	2431.5	Up	2350.9	2322.1	2265.5	2474.1	2457.8	2447.9	2415.1	2405.2	2388.9
ICICIBANK	582.1	Down	581.2	582.8	599.7	598.6	592.3	588.5	575.7	571.9	565.6

Nifty 50 Stock Levels

Symbol	Close	Trend	5 Day SMA	10 Day SMA	20 Day SMA	R3	R2	R1	S1	S2	S3
INDUSINDBK	954.45	Down	962.9	980.5	1016.9	993.9	978.8	969.7	939.2	930.1	915.0
INFY	1368.05	Up	1364.2	1365.1	1359.4	1396.5	1385.6	1379.0	1357.1	1350.5	1339.6
IOC	91.85	Down	92.4	94.2	97.7	93.8	93.0	92.6	91.1	90.7	89.9
ITC	218.5	Neutral	215.4	217.8	213.4	222.8	221.2	220.2	216.8	215.8	214.2
JSWSTEEL	468.45	Up	453.8	444.8	431.2	481.1	476.2	473.3	463.6	460.7	455.8
KOTAKBANK	1753	Down	1781.7	1810.7	1864.0	1795.8	1779.4	1769.5	1736.5	1726.6	1710.2
LT	1418.9	Down	1404.4	1412.4	1454.9	1449.4	1437.8	1430.7	1407.1	1400.0	1388.4
M&M	795.25	Down	804.0	826.0	839.5	815.3	807.6	803.0	787.5	782.9	775.2
MARUTI	6859.2	Down	6910.9	7017.6	7115.6	7017.0	6956.7	6920.1	6798.3	6761.7	6701.4
NESTLEIND	17165.2	Up	16730.9	16629.7	16726.3	17475.9	17357.2	17285.1	17045.3	16973.2	16854.5
NTPC	106.55	Down	106.1	106.9	108.8	108.7	107.9	107.4	105.7	105.2	104.4
ONGC	102.15	Down	103.8	106.6	110.5	105.1	103.9	103.3	101.0	100.4	99.2
POWERGRID	215.65	Up	219.1	221.3	221.3	220.0	218.3	217.3	214.0	213.0	211.3
RELIANCE	2003.1	Down	2025.1	2044.5	2104.6	2050.0	2032.1	2021.2	1985.0	1974.1	1956.2
SBILIFE	880.85	Down	877.9	888.7	905.0	900.3	892.9	888.4	873.3	868.8	861.4
SBIN	364.3	Down	361.8	365.9	378.2	374.3	370.5	368.2	360.4	358.1	354.3
SHREECEM	29465.4	Neutral	28547.8	27881.5	27830.0	30122.5	29871.5	29719.0	29211.8	29059.3	28808.3
SUNPHARMA	597.8	Down	591.8	588.3	602.4	610.5	605.7	602.7	592.9	589.9	585.1
TATAMOTORS	301.8	Down	296.6	301.8	315.3	312.7	308.5	306.0	297.6	295.1	290.9
TATASTEEL	811.85	Up	764.7	745.7	742.1	835.0	826.1	820.8	802.9	797.6	788.7
TCS	3177.85	Up	3136.2	3118.2	3089.8	3237.0	3214.4	3200.7	3155.0	3141.3	3118.7
TECHM	991.45	Up	997.7	1002.6	998.2	1013.7	1005.2	1000.0	982.9	977.7	969.2
TITAN	1558.05	Up	1520.1	1498.5	1489.2	1592.5	1579.3	1571.3	1544.8	1536.8	1523.6
ULTRACEMCO	6737.95	Up	6795.8	6742.4	6706.3	6884.8	6828.7	6794.6	6681.3	6647.2	6591.1
UPL	641.85	Up	616.2	618.5	618.0	661.1	653.7	649.3	634.4	630.0	622.6
WIPRO	414.15	Down	412.2	413.8	421.3	423.1	419.7	417.6	410.7	408.6	405.2

Research Disclaimer and Disclosure inter-alia as required under Securities and Exchange Board of India (Research Analysts) Regulations, 2014

Inventure Growth and Securities Limited (“IGSL”) is a registered Research Analyst Entity (hereinafter be referred as “IGSL RE”). “IGSL” is a registered stock broker or intermediary engaged in Stock Broking, Depository Participant and Mutual Fund Distributor. Registered member of National Stock Exchange of India Ltd (NSEIL), Bombay Stock Exchange Ltd (BSE), Metropolitan Stock Exchange of India Ltd (MSEI). IGSL is also a depository participant with Central Depository Services Ltd (CDSL)

This Research Report (hereinafter referred as “Report”) has been prepared by Inventure Growth & Securities Limited as a Research Entity (hereinafter referred as “IGSL RE” Limited. The Research Analysts, strategists are principally responsible for the preparation of “IGSL RE” research. The research analysts have received compensation based upon various factors, which may include quality of research, investor client feedback, stock picking, competitive factors and firm revenues etc.

Whilst IGSL has taken all reasonable steps to ensure that this information is correct, IGSL does not offer any warranty as to the accuracy or completeness of such information. Any person placing reliance on the report to undertake trading does so entirely at his or her own risk and IGSL does not accept any liability as a result. Securities and Derivatives markets may be subject to rapid and unexpected price movements and past performance is not necessarily an indication of future performance.

General Disclaimer: This ‘Report’ is strictly meant for use by the recipient and is not for circulation. This Report does not take into account particular investment objectives, financial situations or specific needs of individual clients nor does it constitute a personal recommendation. The recommendations, if any, made herein are expression of views and/or opinions and should not be deemed or construed to be neither advice for the purpose of purchase or sale of any security, derivatives or any other security through IGSL nor any solicitation or offering of any investment /trading opportunity on behalf of the issuer(s) of the respective security (ies) referred to herein. These information / opinions / views are not meant to serve as a professional investment guide for the readers. No action is solicited based upon the information provided herein. Recipients of this “Report” should rely on information/data arising out of their own Study/investigations. It is advised to seek independent professional advice and arrive at an informed trading/investment decision before executing any trades or making any investments. This ‘Report’ has been prepared on the basis of publicly available information, internally developed data and other sources believed by IGSL to be reliable. IGSL or its directors, employees, affiliates or representatives shall not be responsible for, or warrant for the accuracy, completeness, adequacy and reliability of such information / opinions / views. Though due care has been taken to ensure that the disclosures and opinions given are fair and reasonable, none of the directors, employees, affiliates or representatives of IGSL shall be liable for any direct, indirect, special, incidental, consequential, punitive or exemplary damages, including lost profits arising in any way whatsoever from the information / opinions / views contained in this Report.

The price and value of the investments referred to in this Report and the income from them may tend to go down as well as up, and investors may incur losses on any investments. Yester performance shall not be a guide for future performance. IGSL does not provide tax advice to its clients, and all investors are strongly advised to take advice of their tax advisers regarding taxation aspects of any potential investment. Opinions are based on the current scenario as of the date appearing on this ‘Report’ only. IGSL does not undertake to advise you as to any change of our views expressed in this “Report’ may differ on account of differences in research methodology, personal judgment and difference in time horizons for which recommendations are made. User should keep this risk in mind and not hold IGSL, its employees and associates responsible for any losses, damages of any type whatsoever.

Disclaimers in respect of jurisdiction: This report is not directed to, or intended for distribution to or use by, any person or entity who is a citizen or resident of or located in

any locality, state, country or other jurisdiction where such distribution, publication, availability or use would be contrary to law or regulation or which would subject “IGSL” to any registration or licensing requirement within such jurisdiction(s). No action has been or will be taken by “IGSL” in any jurisdiction (other than India), where any action for such purpose(s) is required. Accordingly, this ‘Report’ shall not be possessed, circulated and/or distributed in any such country or jurisdiction unless such action is in compliance with all applicable laws and regulations of such country or jurisdiction. “IGSL” requires such recipient to inform himself about and to observe any restrictions at his own expense, without any liability to “IGSL”. Any dispute arising out of this Report shall be subject to the exclusive jurisdiction of the Courts in Mumbai (India).

Statements on ownership and material conflicts of interest, compensation - IGSL and Associates reciprocates to the best of the knowledge and belief of IGSL/ its Associates/ research Analyst who is preparing this report.

Disclaimer and Disclosure



Disclosures of Interest (Additional):

- “IGSL”, its research Analyst(s), or its associates or relatives of the Research Analyst does not have any financial interest in the company(ies) covered in this report.
- “IGSL” its research Analyst, or its associates or relatives of the research analyst affiliates collectively do not hold more than 1% of the securities of the company (ies)covered in this report as of the end of the month immediately preceding the distribution of the research report.
- “IGSL”, its research analyst, his/her associate, his/her relative, do not have any other material conflict of interest at the time of publication of this research report.
- “IGSL”, its research analyst, and its associates have not received compensation for investment banking or merchant banking or brokerage services or for any other products or services from the company(ies) covered in this report, in the past twelve months.
- “IGSL”, its research analyst, or its associates have not managed or co-managed in the previous twelve months, a private or public offering of securities for the company (ies) covered in this report.
- “IGSL, or its associates have not received compensation or other benefits from the company(ies) covered in this report or from any third party, in connection with the research report.
- IGSL research analyst has not served as an Officer, Director, or employee of the company (ies) covered in the Research report.
- “IGSL”, its research analyst has not been engaged in market making activity for the company(ies) covered in the Research report.
- The details of IGSL, its research analyst and its associates pertaining to the companies covered in the Research report are given below

Sr. No.	Particulars	Yes / No
1.	Whether compensation has been received from the company(ies) covered in the Research report in the past 12 months for investment banking transaction by IGSL	No
2.	Whether Research Analyst, IGSL or its associates or relatives of the Research Analyst affiliates collectively hold more than 1% of the company(ies) covered in the Research report	No
3.	Whether compensation has been received by IGSL or its associates from the company(ies) covered in the Research report	No
4.	IGSL or its affiliates have managed or co-managed in the previous twelve months a private or public offering of securities for the company(ies) covered in the Research report	No
5.	IGSL, its research analyst, his associate, or its associates have received compensation for investment banking or merchant banking or brokerage services or for any other products or services from the company(ies) covered in the Research report, in the last twelve months	No

Copyright: The copyright in this research report belongs exclusively to IGSL. All rights are reserved. Any unauthorized use or disclosure is prohibited. No reprinting or reproduction, in whole or in part, is permitted without the IGSL’s prior consent, except that a recipient may reprint it for internal circulation only and only if it is reprinted in its entirety.

This “Report” is for distribution only under such circumstances as may be permitted by applicable law. This “Report” has no regard to the specific investment objectives, financial situation or particular needs of any specific recipient, even if sent only to a single recipient. This “Report” is not guaranteed to be a complete statement or summary of any securities, markets, reports or developments referred to in this research report. Neither IGSL nor any of its directors, officers, employees or agents shall have any liability, however arising, for any error, inaccuracy or incompleteness of fact or opinion in this “report” or lack of care in this report’s preparation or publication, or any losses or damages which may arise from the use of this research report.

Information barriers may be relied upon by IGSL, such as “Chinese Walls” to control the flow of information within the areas, units, divisions, groups, or affiliates of IGSL.

Investing in any non-U.S. securities or related financial instruments (including ADRs) discussed in this research report may present certain risks. The securities of non-U.S. issuers may not be registered with, or be subject to the regulations of, the U.S. Securities and Exchange Commission. Information on such non-U.S. securities or related financial instruments may be limited. Foreign companies may not be subject to audit and reporting standards and regulatory requirements comparable to those in effect within the United States. The value of any investment or income from any securities or related financial instruments discussed in this research report denominated in a currency other than U.S. dollars is subject to exchange rate fluctuations that may have a positive or adverse effect on the value of or income from such securities or related financial instruments.

Past performance is not necessarily a guide to future performance and no representation or warranty, express or implied, is made by IGSL with respect to future performance. Income from investments may fluctuate. The price or value of the investments to which this research report relates, either directly or indirectly, may fall or rise against the interest of investors. Any recommendation or opinion contained in this research report may become outdated as a consequence of changes in the environment in which the issuer of the securities under analysis operates, in addition to changes in the estimates and forecasts, assumptions and valuation methodology used herein.

No part of the content of this research report may be copied, forwarded or duplicated in any form or by any means without the prior written consent of IGSL and IGSL accepts no liability whatsoever for the actions of third parties in this respect.