

NIFTY	SENSEX	BANKNIFTY	INDIAVIX	10YR G-SEC	USDINR
11,834.60	40,182.67	23,191.35	20.38	6.02%	73.33
0.82%	0.76%	0.99%	1.60%	0.00%	0.00%

## Nifty Short Term View

Nifty Close	R1	R2	S1	S2
11834.6	11924	12089	11710	11590

Indian shares rose on Thursday to extend gains for the sixth day running, with positive global cues and better-than-expected quarterly numbers from Tata Consultancy Services offering support. Cues from other Asian markets and Europe were positive after U.S. President Donald Trump said he was open to piecemeal spending measures for airlines, small businesses and stimulus checks of \$1,200 for individuals. Nifty index rose 95.75 points, to 11,834.60.

Yesterday's price action depicts a gravestone Doji pattern on daily chart. This indicates some uncertainty and observed selling from the higher end in the weekly expiry. However, index is still in a bullish mode so one can consider 11710 as a good support level.



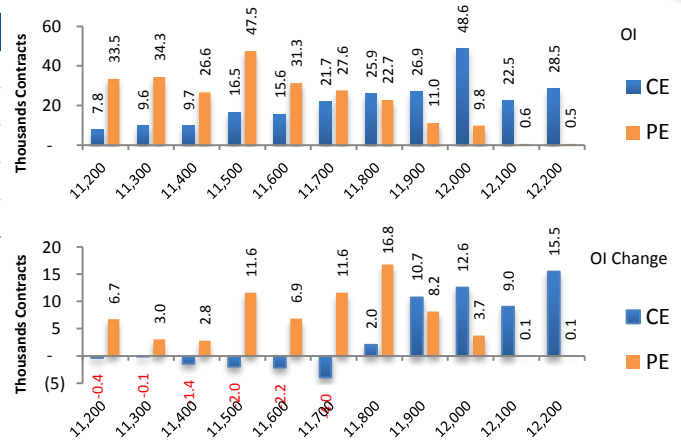
## News Buzz

- Governor Shaktikanta Das will announce the decision of the panel at 10 AM. The revamped MPC of the RBI may at last release a GDP forecast for the fiscal. Experts opined that it may not go for a reduction in the policy rate in the wake of rising Consume Price Index (CPI) based inflation, driven mainly by supply-side issues.
- Association of Mutual Funds in India (AMFI) data released for the month of September said investors withdrew a net Rs 734.40 crore from equity-oriented funds. Debt mutual fund schemes also were under redemption pressure, with a net outflow of Rs 51,962.16 crore, largely due to outflows in liquid funds.
- Moody's revises global **steel sector** outlook to stable as worldwide demand starts to recover
- **Vedanta** promoters need 60 cr shares tendered on Friday to delist the company. As on Thursday, the large chunk of shares totalling 17.07 crore were tendered at Rs 160 per share as against the floor price of Rs 87.25 apiece, showed the data from the Bombay Stock Exchange.
- IT services major **Infosys** has inked a pact to acquire Blue Acorn iCi, a digital customer experience, commerce and analytics services provider, for up to \$125 million (about Rs 915 crore).
- **Titan** will end its five year old joint venture with luxury goods maker Montblanc. The decision to exit the JV was driven by the company's consolidation strategy to focus on its primary business and proprietary brands.
- Business back to pre-Covid levels: **LIC Housing Finance**. In July, the mortgage lender had slashed home loan rates to an all-time low interest rate of 6.9 per cent for home loan borrowers.
- **Oil India Ltd**, the nation's second-biggest state-owned oil producer, on Thursday said it has started exploring for oil and gas in the Andaman sea.
- **Piramal Enterprises** prepays Rs 1,000 crore loan taken from Barclays. The loan was backed by interest income arising out of Piramal's real estate loans given to Macrotech Developers, formerly known as Lodha Developers, and PHL Fininvest.
- Fitch affirmed **Adani Green Energy** Restricted Group 2's notes at 'BBB-', and the outlook is Negative.
- Belgrave Investment Fund increased stake in the **Srikalahasthi Pipes** to 5.80 percent from 4.95 percent earlier.
- **Dixon** to open third handset assembly plant by January with Rs 75 crore investment
- **Result on 9th October 2020** :- Rashtriya Chemicals & Fertilizers (RCF)

# Derivative Activity

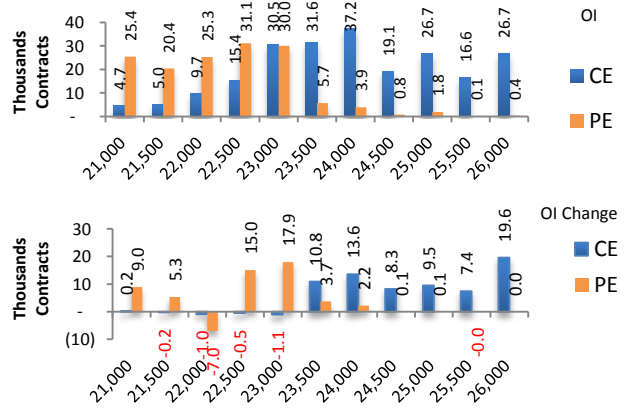
Index	NIFTY	Change
Fut Closing	11831.8	0.7%
Prem /Disc	-2.80	-14.85
OI Qty	1.26 Cr.	7.3%
Nifty PCR	1.49	
Highest OI	12500 CE	10500 PE

- NIFTY future was up 0.69% with increase in O I by 7.3%.
- Nifty Put O I addition was seen at 11800 followed by 11500 which can act as short term support
- Nifty Call O I addition was seen at 12200 followed by 12000. which can act as short term resistance



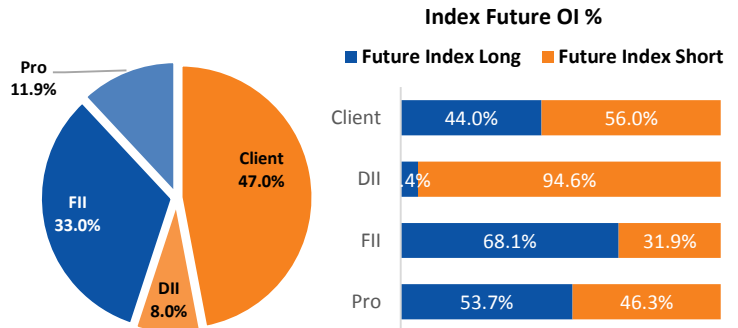
Index	BANKNIFTY	Change
Fut Closing	23184.7	0.7%
Prem/Disc	-6.65	-60.70
OI Qty	0.16 Cr.	2.5%
Highest OI	24000 CE	22500 PE

- Nifty Bank future was up 0.72% with increase in O I by 2.5%.
- Nifty Bank Put O I addition was seen at 23000 followed by 22500 which can act as short term support.
- Nifty Bank Call O I addition was seen at 26000 followed by 24000 which can act as short term resistance.



## Participant wise OI Activity ( Fig in '000 Contracts)

Participant Type	Index Fut Activity	Call Activity	Put Activity
Retail	-18.8	-42.2	-88.5
DII	-1.2	0.0	0.7
FII	16.1	-15.7	-14.2
Pro	3.9	57.9	102.0



- Yesterday, FII had added Long 16.1K Contracts in Index Futures and Clients had done Long Unwinding of 18.8K Contracts
- FII had done Call Long Unwinding by 15.7K Contracts and done Put Long Unwinding of 14.2K Contracts
- Clients had done Call Long Unwinding by 42.2K Contracts and done Put Long Unwinding of 88.5K Contracts

## Open Interest Gainers

Symbol	Trend	Future Price	Price Chng %	Fut OI Chng %
MOTHERSUMI	Up	120.8	2.7%	12.0%
BIOCON	Up	471.25	3.7%	8.5%
IBULHSGFIN	Down	149.75	-1.0%	7.9%
DRREDDY	Neutral	5219.7	1.8%	7.9%
VEDL	Up	118.15	-3.0%	5.5%

## Volume Gainers

Symbol	Trend	Future Price	Price Chng %	3 Day Vol Chng %
VEDL	Up	118.15	-3.0%	180.1%
MINDTREE	Up	1459.85	5.4%	124.6%
WIPRO	Up	360.35	7.0%	78.5%
NMDC	Down	82.95	0.7%	70.6%
SRF	Down	4277.05	2.4%	68.2%

## Stocks Near Highest Call Open Interest

Symbol	Trend	Future Price	Highest Call OI	No of Contracts
HEROMOTOCO	Up	3277.65	3300	516
BANDHANBNK	Up	319.3	320	493
CANBK	Down	89.5	90	473

BAN Scripts - > ADANIEN: 90%, BHEL: 100%, IDEA: 91%, VEDL: 98%

## Open interest Losers

Symbol	Trend	Future Price	Price Chng %	Fut OI Chng %
TCS	Up	2821.35	2.7%	-11.0%
WIPRO	Up	360.35	7.0%	-8.8%
SUNTV	Down	467.2	0.7%	-7.9%
IGL	Down	391.75	1.5%	-6.5%
TECHM	Up	862.15	1.3%	-5.8%

## Highest Position Carry forward %

Symbol	Trend	Future Price	Price Chng %	O I Chng / Volume
LT	Neutral	885.45	-0.8%	19.0%
ITC	Down	168.05	-1.4%	13.4%
BALKRISIND	Up	1449.7	-0.4%	10.7%
MOTHERSUMI	Up	120.8	2.7%	10.7%
POWERGRID	Down	159.05	-0.8%	10.3%

## Stocks Near Highest Put Open Interest

Symbol	Trend	Future Price	Highest Put OI	No of Contracts
HINDPETRO	Down	171.4	170	362
DLF	Up	160.5	160	257
SRTRANSFIN	Down	640	640	242

# Nifty 50 Daily Levels

Symbol	Close	Trend	5 Day SMA	10 Day SMA	20 Day SMA	R3	R2	R1	S1	S2	S3
NIFTY	11834.6	Up	11641.1	11381.4	11396.8	12035.8	11958.9	11882.1	11787.1	11710.3	11633.4
BANKNIFTY	23191.35	Up	22771.7	22000.3	22037.7	23734.0	23526.7	23319.4	23063.3	22856.0	22648.7
ADANI PORTS	359.75	Up	359.0	346.4	346.0	368.9	365.4	361.9	357.6	354.1	350.6
ASIANPAINT	2088.7	Up	2073.8	2014.0	2011.6	2132.1	2115.5	2099.0	2078.4	2061.9	2045.3
AXISBANK	451.9	Up	450.3	436.7	437.4	468.7	462.3	455.9	447.9	441.5	435.1
BAJAJ-AUTO	3074.6	Up	3023.0	2983.1	2983.4	3143.8	3117.4	3090.9	3058.3	3031.8	3005.4
BAJAJFINSV	5871.95	Up	5971.7	5889.9	5931.7	6066.3	5992.1	5917.8	5826.1	5751.8	5677.6
BAJFINANCE	3326.4	Up	3399.0	3310.7	3374.9	3447.8	3401.4	3355.1	3297.7	3251.4	3205.0
BHARTIARTL	424.45	Down	428.0	430.8	454.9	435.5	431.3	427.1	421.8	417.6	413.4
BPCL	340.05	Down	350.0	363.5	387.9	350.6	346.6	342.5	337.6	333.5	329.5
BRITANNIA	3794.7	Up	3808.8	3767.7	3749.3	3885.8	3851.0	3816.2	3773.2	3738.4	3703.6
CIPLA	811.45	Up	786.7	776.3	765.6	830.4	823.2	815.9	807.0	799.7	792.5
COALINDIA	113.3	Down	116.6	117.3	120.5	115.8	114.9	113.9	112.7	111.7	110.8
DRREDDY	5194.45	Neutral	5164.3	5149.0	4970.5	5300.4	5259.9	5219.5	5169.4	5129.0	5088.5
EICHERMOT	2208.8	Up	2216.9	2184.2	2161.9	2270.0	2246.6	2223.2	2194.4	2171.0	2147.6
GAIL	84.15	Down	87.0	86.7	88.4	86.3	85.5	84.7	83.6	82.8	82.0
GRASIM	770.35	Up	761.6	741.3	731.9	791.6	783.5	775.4	765.3	757.2	749.1
HCLTECH	849.55	Up	831.0	824.3	806.5	870.0	862.2	854.4	844.7	836.9	829.1
HDFC	1949.25	Up	1887.0	1788.3	1762.5	2001.3	1981.4	1961.5	1937.0	1917.1	1897.2
HDFCBANK	1191.8	Up	1142.2	1097.8	1083.3	1217.3	1207.6	1197.8	1185.8	1176.0	1166.3
HDFCLIFE	583.15	Down	581.0	578.8	585.8	599.9	593.5	587.1	579.2	572.8	566.4
HEROMOTOCO	3279.1	Up	3191.8	3135.0	3081.7	3365.0	3332.2	3299.4	3258.8	3226.0	3193.2
HINDALCO	174.25	Up	176.2	172.4	173.6	180.1	177.9	175.6	172.9	170.6	168.4
HINDUNILVR	2160.8	Up	2120.9	2091.3	2099.0	2203.4	2187.1	2170.8	2150.8	2134.5	2118.2
ICICIBANK	387.5	Up	380.4	366.8	366.2	399.6	395.0	390.4	384.6	380.0	375.4
INDUSINDBK	617.7	Up	613.4	570.0	583.4	647.8	636.3	624.8	610.6	599.1	587.6
INFRA TEL	191	Up	183.6	181.2	187.7	198.4	195.6	192.7	189.3	186.4	183.6
INFY	1093.7	Up	1047.7	1022.5	1006.7	1119.7	1109.8	1099.8	1087.6	1077.6	1067.7
IOC	75.5	Down	75.3	74.8	77.9	77.2	76.5	75.9	75.1	74.5	73.8
ITC	167.15	Down	170.2	170.6	175.4	170.7	169.4	168.0	166.3	164.9	163.6
JSWSTEEL	292.95	Up	290.6	282.4	282.8	301.9	298.5	295.1	290.8	287.4	284.0
KOTAKBANK	1320.15	Up	1321.7	1293.0	1298.7	1355.8	1342.2	1328.6	1311.7	1298.1	1284.5
LT	881.05	Neutral	896.8	894.1	897.0	901.0	893.4	885.8	876.3	868.7	861.1
M&M	634.15	Up	624.4	613.6	619.4	651.1	644.7	638.2	630.1	623.6	617.2
MARUTI	7079.95	Up	6953.2	6790.8	6871.0	7269.7	7197.2	7124.7	7035.2	6962.7	6890.2
NESTLEIND	16304.5	Up	16123.5	15917.0	15936.4	16638.7	16511.1	16383.4	16225.6	16097.9	15970.3
NTPC	82.6	Down	84.2	84.8	87.1	84.3	83.7	83.0	82.2	81.5	80.9
ONGC	68.45	Down	69.7	69.6	71.1	70.4	69.7	68.9	68.0	67.2	66.5
POWERGRID	158.3	Down	162.5	163.0	167.3	161.4	160.2	159.0	157.6	156.4	155.2
RELIANCE	2239.25	Down	2239.0	2232.0	2262.0	2297.5	2275.2	2253.0	2225.5	2203.3	2181.0
SBIN	191.5	Down	191.5	187.7	191.2	196.8	194.8	192.8	190.2	188.2	186.2
SHREECEM	20735.15	Up	20564.3	20010.8	19799.6	21212.1	21029.9	20847.7	20622.6	20440.4	20258.2
SUNPHARMA	524.1	Up	519.6	510.2	510.1	536.6	531.8	527.0	521.2	516.4	511.6
TATAMOTORS	140.95	Up	139.6	134.9	139.2	146.2	144.2	142.2	139.7	137.7	135.7
TATASTEEL	373.65	Down	375.3	367.1	380.7	384.5	380.3	376.2	371.1	367.0	362.8
TCS	2825.7	Up	2705.2	2564.5	2512.9	2886.2	2863.1	2840.0	2811.4	2788.3	2765.2
TECHM	860.3	Up	846.4	811.4	799.8	881.3	873.3	865.3	855.3	847.3	839.3
TITAN	1254.15	Up	1224.0	1184.7	1171.4	1286.1	1273.9	1261.7	1246.6	1234.4	1222.2
ULTRACEMCO	4345.95	Up	4183.6	4066.6	3997.9	4448.5	4409.3	4370.2	4321.7	4282.6	4243.4
UPL	509.4	Down	510.7	508.1	515.6	525.0	519.1	513.1	505.7	499.7	493.8
WIPRO	359.45	Up	335.7	324.0	315.8	367.9	364.7	361.5	357.4	354.2	351.0
ZEEL	205.9	Up	211.1	207.3	210.5	215.0	211.5	208.0	203.8	200.3	196.8

Research Team Tel: 022 – 71148579

E-mail: [research@inventuregrowth.com](mailto:research@inventuregrowth.com)Website: [Inventuregrowth.com](http://www.inventuregrowth.com)

This Report is published by Inventure Growth & Securities Limited (hereinafter referred to as “IGSL”) for private circulation. IGSL is a registered Research Analyst under SEBI (Research Analyst) Regulations, 2014 having Registration no. INH000006129. IGSL is also a registered Stock Broker with National Stock Exchange of India Limited, BSE Limited and Metropolitan Stock Exchange of India Limited (MSE) in cash, F&O & currency derivatives segments. It is also registered as a Depository Participant with CDSL and is also registered with AMFI as a Mutual Fund Distributor

IGSL have not been debarred / suspended by SEBI for Retail & Institutional business or any other regulatory authority for accessing / dealing in securities Market other than PRO business. IGSL, its associates or analyst or his relatives may or may not hold any financial interest in the subject company. IGSL or its associates or Analyst do not have any conflict or material conflict of interest at the time of publication of the research report with the subject company. IGSL or its Affiliates may or may not have been beneficial ownership of one percent or more of the securities mentioned in this report. However, one or more of IGSL or its Affiliates may, from time to time, have a long or short position in any of the securities mentioned herein and may buy or sell those securities or options thereon, either on their own account.

IGSL or its associates / analyst has not received any compensation / managed or co-managed public offering of securities of the company covered by Analyst during the past twelve months. IGSL or its associates have not received any compensation or other benefits from the company covered by Analyst or third party in connection with the research report. Analyst has not served as an officer, director or employee of Subject Company and IGSL / analyst has not been engaged in market making activity of the subject company.

**Analyst Certification:** I/We, **Virat Jagad** the research analyst is the author of this report, hereby certify that the views expressed in this research report accurately reflects my/our personal views about the subject securities, issuers, products, sectors or industries. It is also certified that no part of the compensation of the analyst(s) was, is, or will be directly or indirectly related to the inclusion of specific recommendations or views in this research. The analyst(s) principally responsible for the preparation of this research report and has taken reasonable care to achieve and maintain independence and objectivity in making any recommendations.

Research Team	Profile	Email ID
Mr. Prashant Barwaliya	Head- Research	Prashant.b@inventuregrowth.com
Mr. Virat Jagad	Technical Analyst	virat.jagad@inventuregrowth.com
Ms. Jeni Rita	Fundamental Analyst	Jeni.rita@inventuregrowth.com

**Created by:****IGSL - Research**

Inventure Growth &amp; Securities Ltd, 201, Viraj Tower, Near Landmark Building,

Western Express Highway, Andheri (East), Mumbai -400 093

Tele: 91-22-71148500 , Fax: 91-22-40751511.

E-mail: [Research@inventuregrowth.com](mailto:Research@inventuregrowth.com) , website : <http://www.inventuregrowth.com>**DISCLAIMER**

Inventure Growth and Securities Limited (hereinafter referred to as “IGSL”) is a registered Member of National Stock Exchange of India Limited, Bombay Stock Exchange Limited and Metropolitan Stock Exchange Limited. It is also registered as a Depository Participant with CDSL. It also has registration with AMFI as a Mutual Fund Distributor. Inventure Growth and Securities Limited is a registered entity with SEBI for Research Analyst in terms of SEBI (Research Analyst) Regulations, 2014 vide registration number INH000006129. IGSL has not been debarred/ suspended by SEBI or any other regulatory authority for accessing /dealing in securities Market. IGSL or its associates/ analyst has not received any compensation / managed or co-managed public offering of securities of the company covered by Analyst during the past twelve months.

This document is solely for the personal information of the recipient, and must not be singularly used as the basis of any investment decision. Nothing in this document should be construed as investment or financial advice. Each recipient of this document should make such investigations as they deem necessary to arrive at an independent evaluation of an investment in the securities of the companies referred to in this document (including the merits and risks involved), and should consult their own advisors to determine the merits and risks of such an investment. Reports based on technical and derivative analysis center on studying charts of a stock's price movement, outstanding positions and trading volume, as opposed to focusing on a company's fundamentals and, as such, may not match with a report on a company's fundamentals. Investors are advised to refer the Fundamental and Technical Research Reports available on our website to evaluate the contrary view, if any.

The information in this document has been printed on the basis of publicly available information, internal data and other reliable sources believed to be true, but we do not represent that it is accurate or complete and it should not be relied on as such, as this document is for general guidance only. Inventure Growth and Securities Limited or any of its affiliates/ group companies shall not be in any way responsible for any loss or damage that may arise to any person from any inadvertent error in the information contained in this report. Inventure Growth and Securities Limited has not independently verified all the information contained within this document. Accordingly, we cannot testify, nor make any representation or warranty, express or implied, to the accuracy, contents or data contained within this document. While Inventure Growth and Securities Limited endeavors to update on a reasonable basis the information discussed in this material, there may be regulatory, compliance, or other reasons that prevent us from doing so. This document is being supplied to you solely for your information, and its contents, information or data may not be reproduced, redistributed or passed on, directly or indirectly.

Neither Inventure Growth and Securities Limited , nor its directors, employees or affiliates shall be liable for any loss or damage that may arise from or in connection with the use of this information.